

DIPARTIMENTO DI SCIENZE BIOLOGICHE, GEOLOGICHE  
E AMBIENTALI

Corso di Laurea Magistrale in Geologia e Territorio

Tesi di Laurea Magistrale

Correlazioni tra assetto geologico-strutturale del  
distretto cinabrifero del M.te Amiata e sue risorse  
geotermiche-epitermali

ALLEGATO 2

Candidato:  
Lara Capitanio

Relatore:  
Prof. Paolo S. Garofalo

Correlatori:  
Ing. Fabio Remondino  
Dott.ssa Elisa Mariarosaria Farella

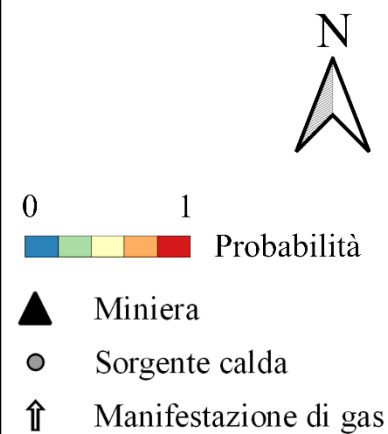
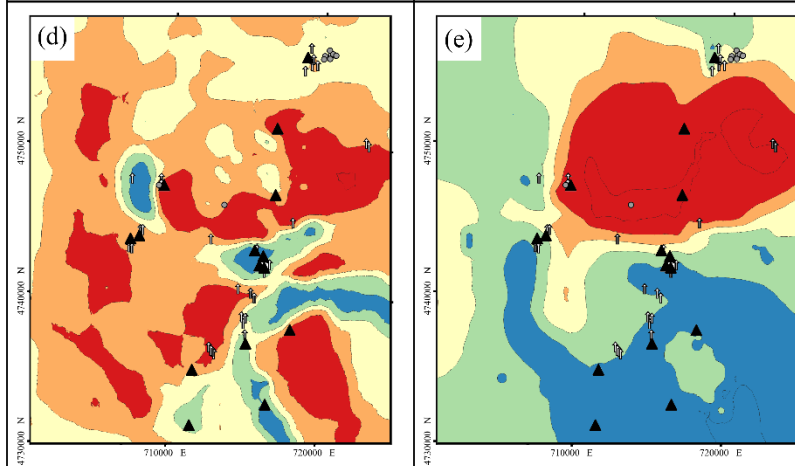
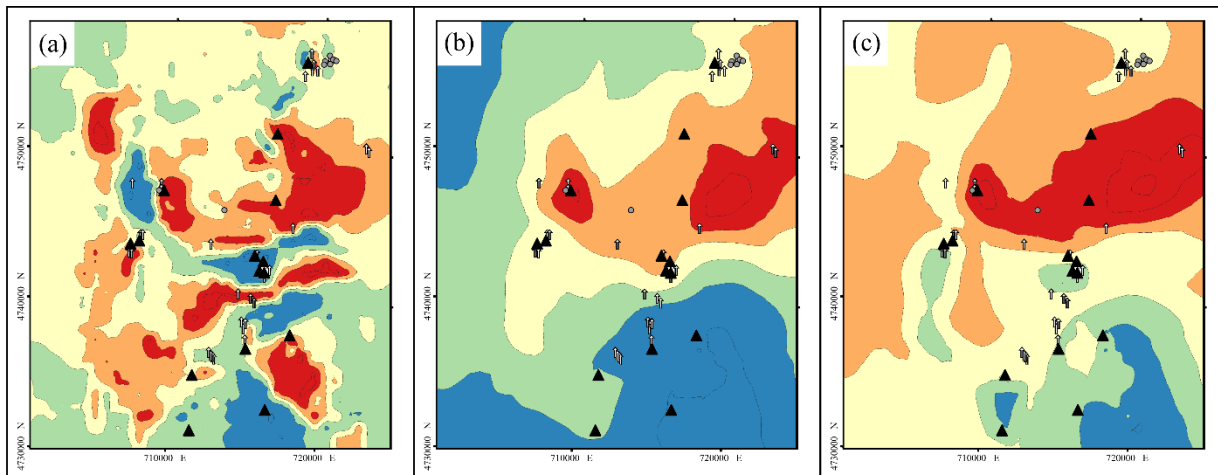
# Sommario

---

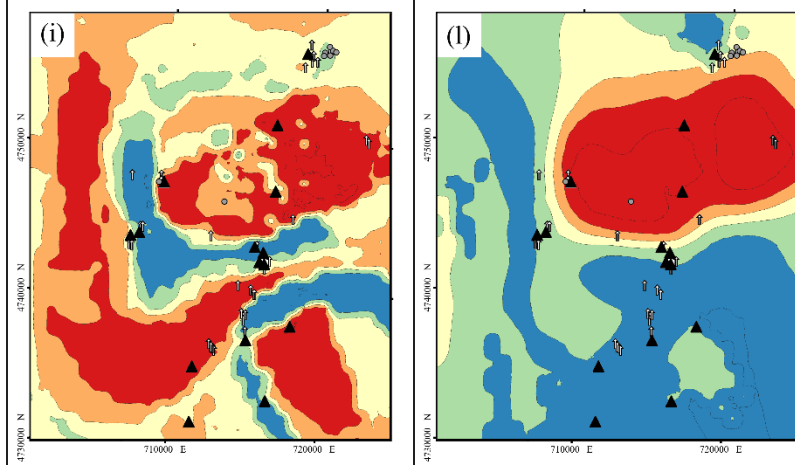
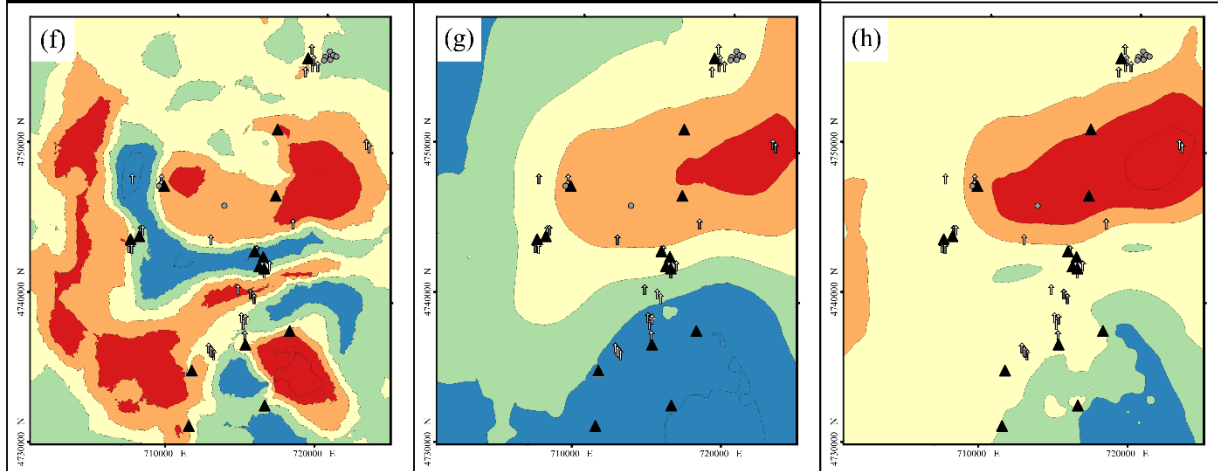
T01 .....	2
T02 .....	3
T03 .....	4
T04 .....	5
T05 .....	6
T06 .....	7
T07 .....	8
T08 .....	9
TA1 .....	10
TA3 .....	11
TA6 .....	12
TA7 .....	13
TA8 .....	14
TB5 .....	15
TB6 .....	16
TB7 .....	17
TB8 .....	18

T01

0m  
b.g.l.

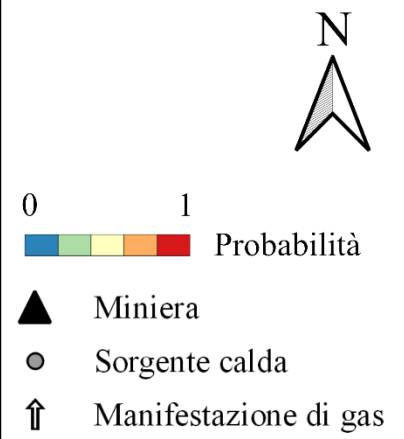
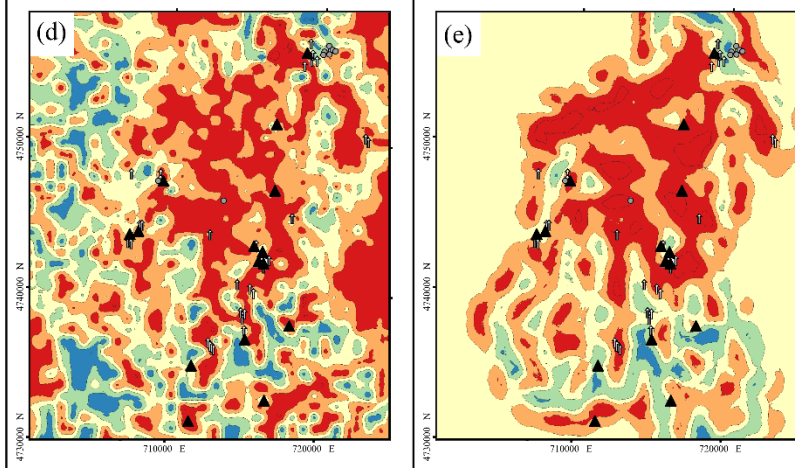
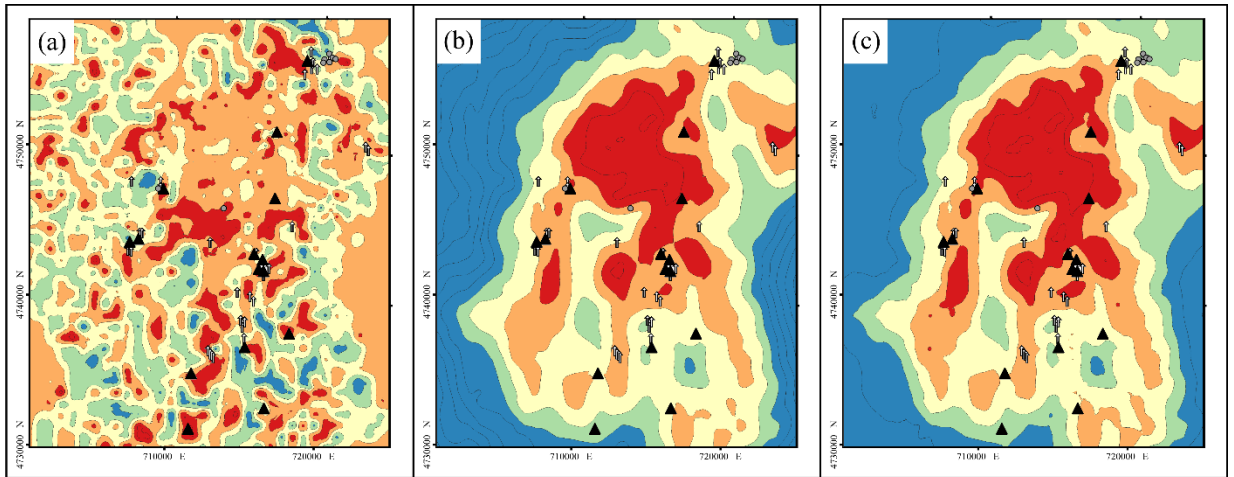


-100m  
b.g.l.

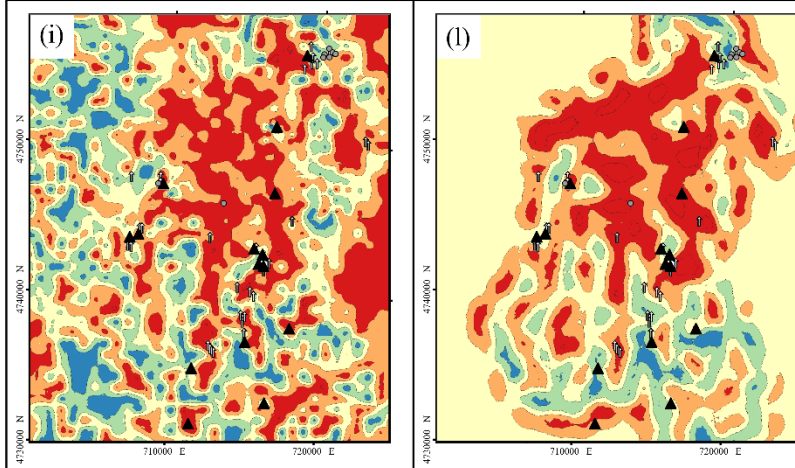
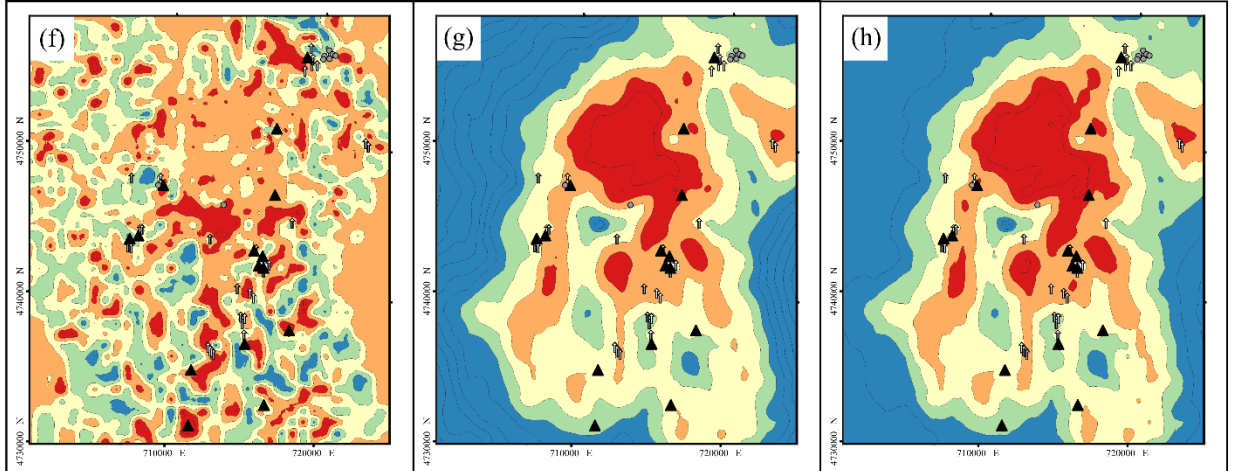


T02

0m  
b.g.l.

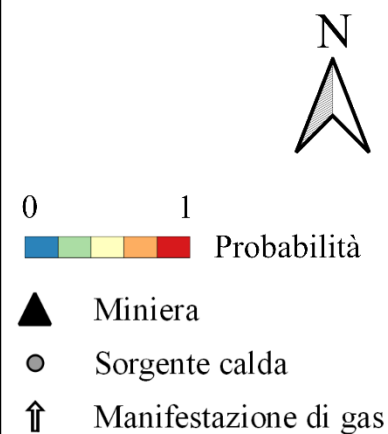
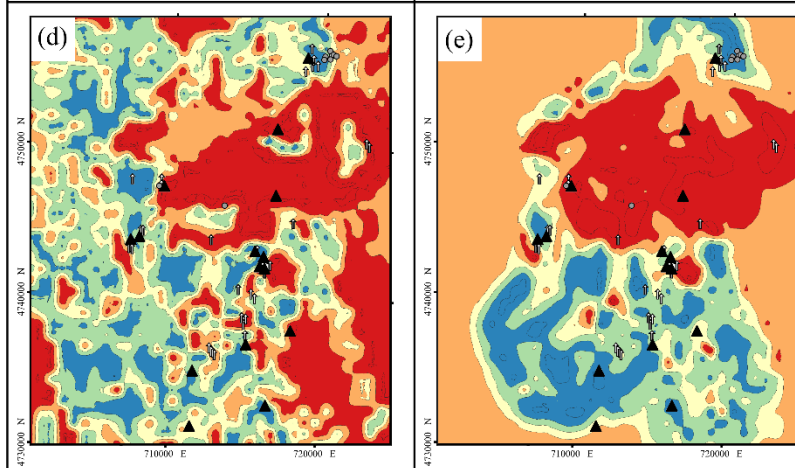
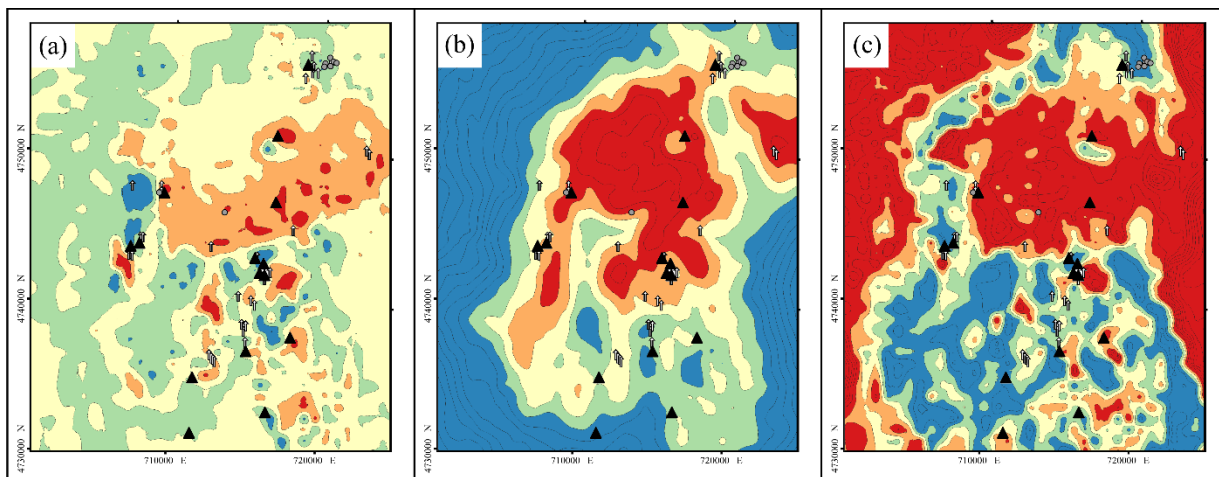


-100m  
b.g.l.

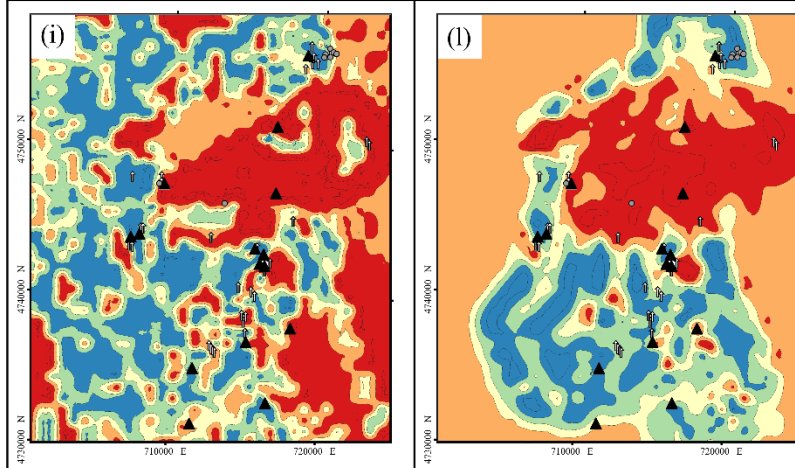
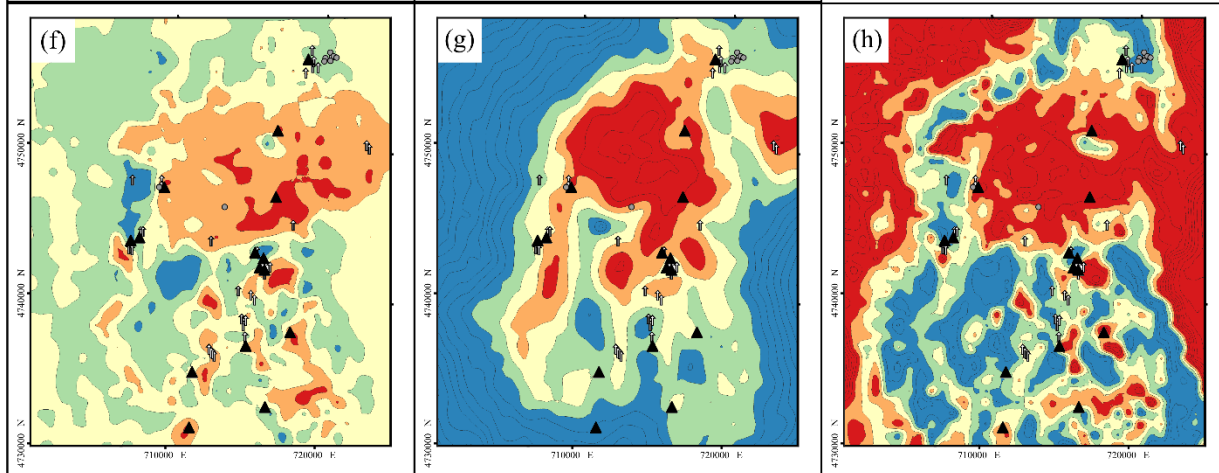


T03

0m  
b.g.l.

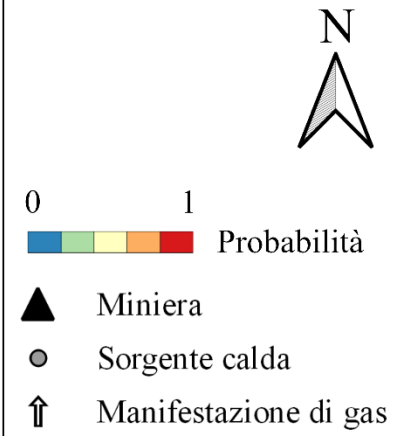
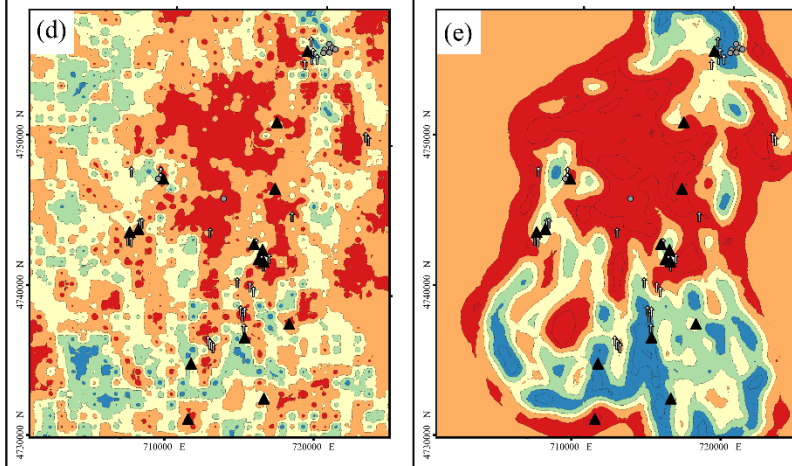
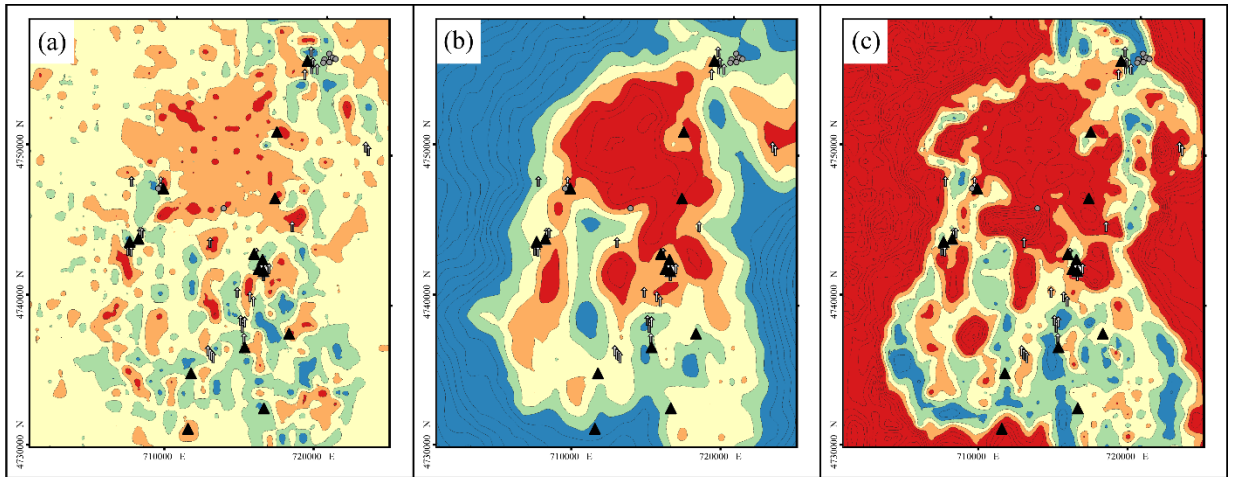


-100m  
b.g.l.

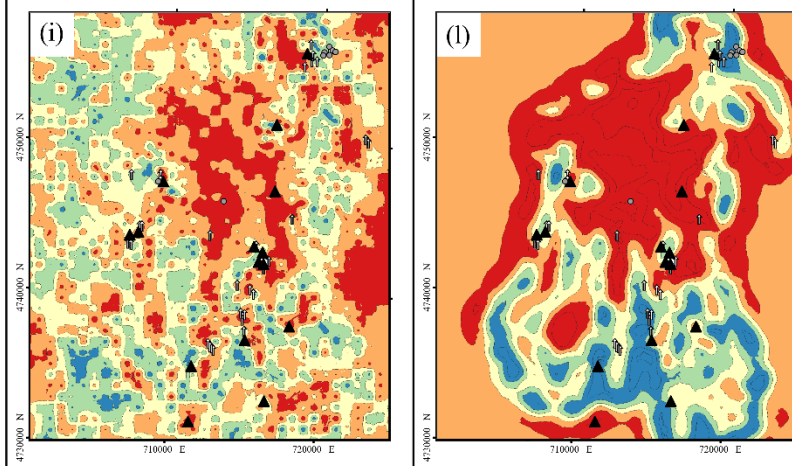
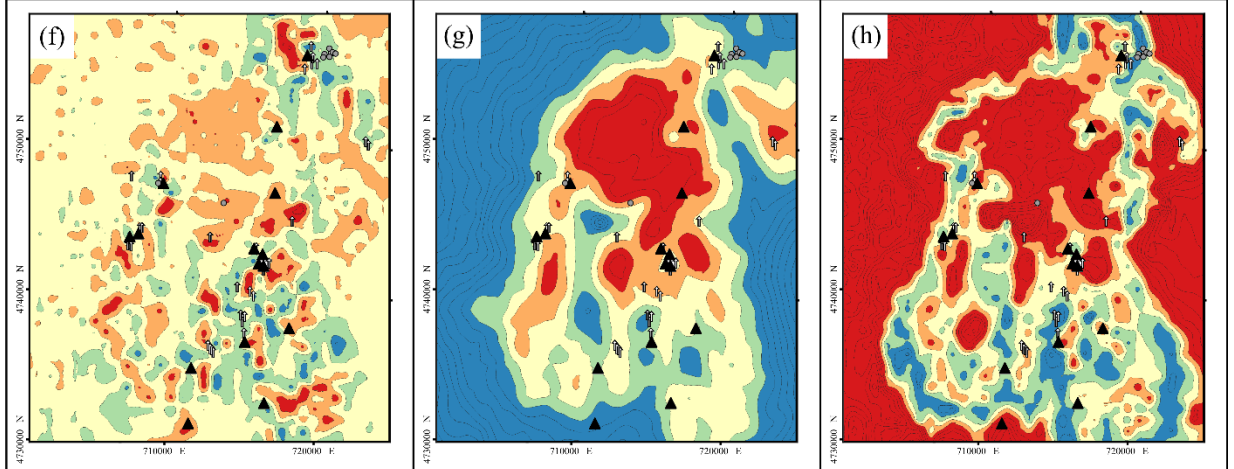


T04

0m  
b.g.l.

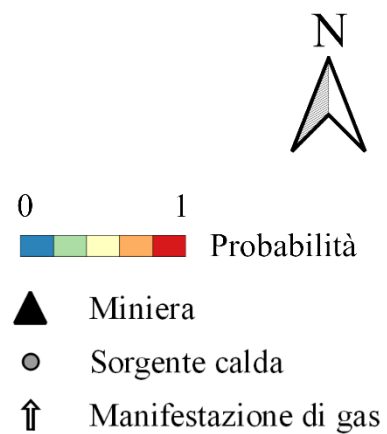
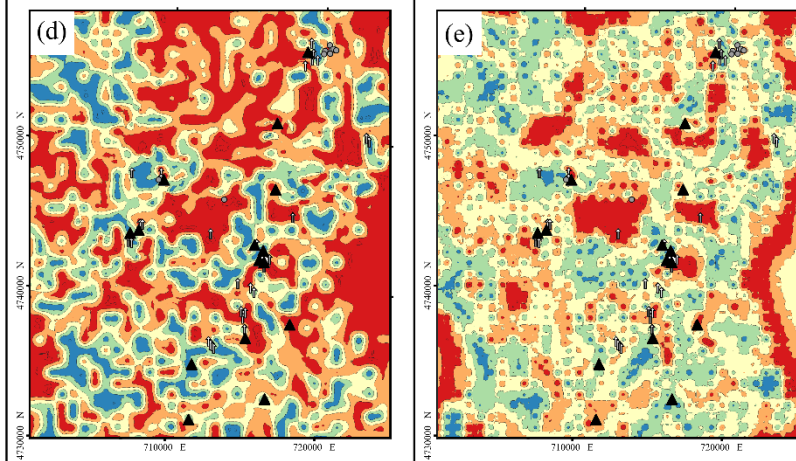
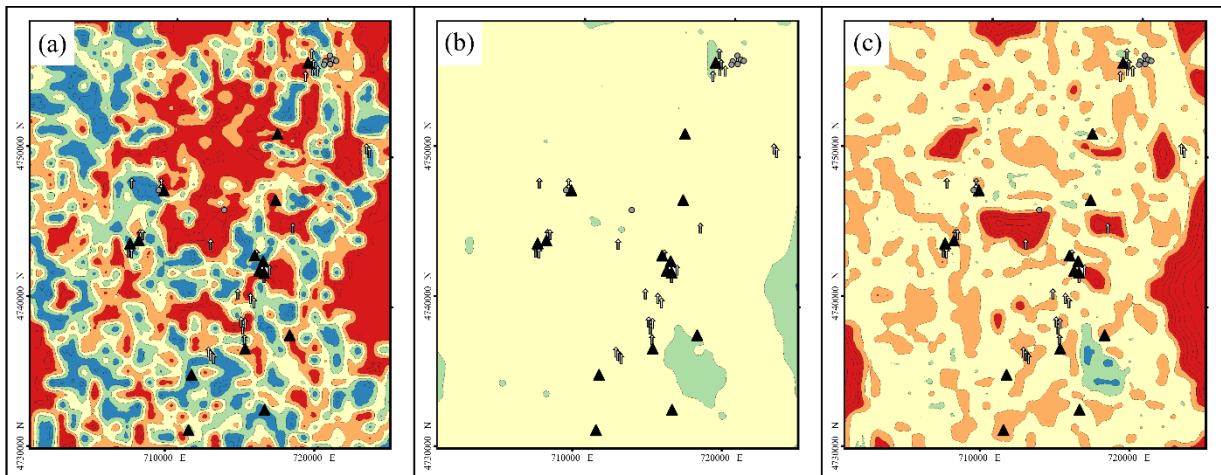


-100m  
b.g.l.

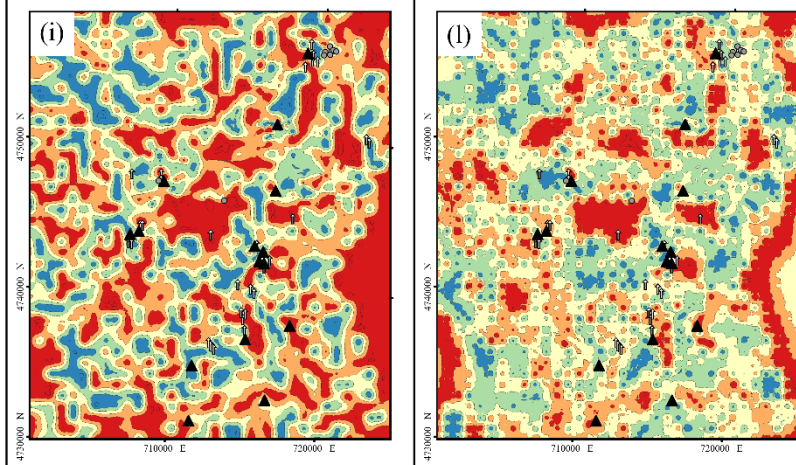
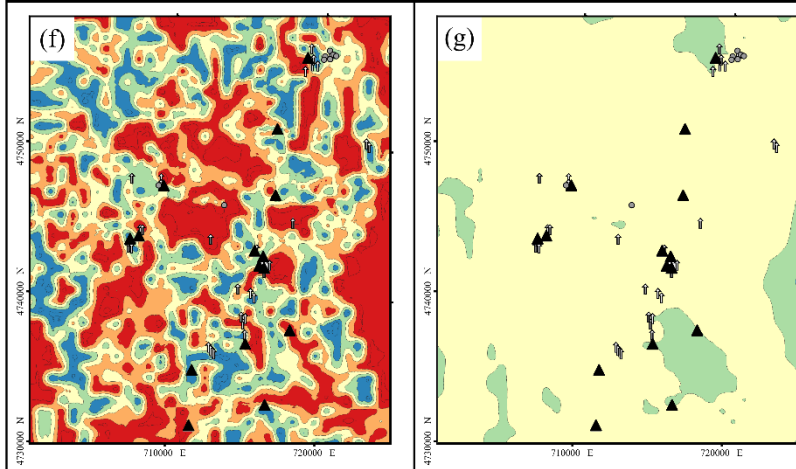


T05

0m  
b.g.l.

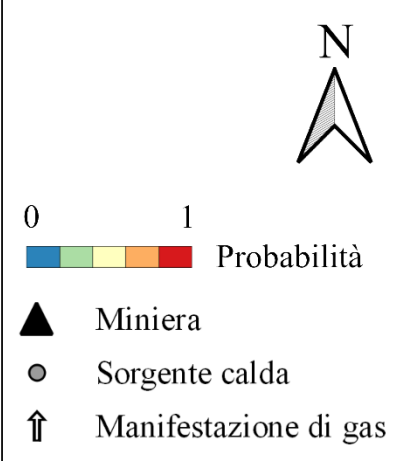
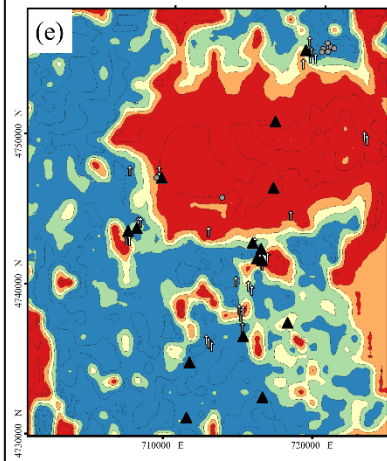
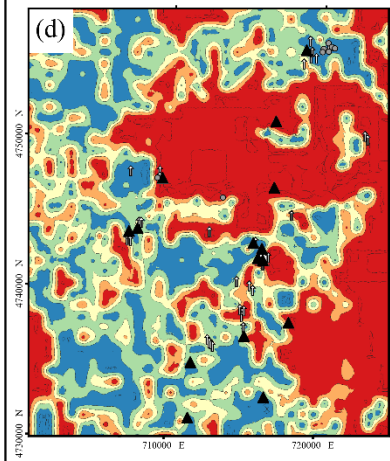
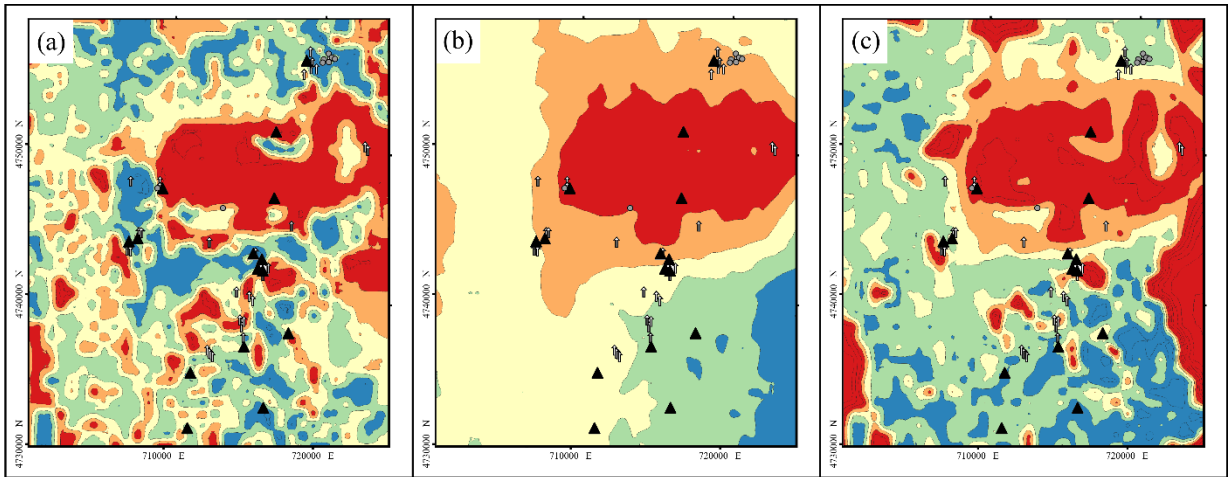


-100m  
b.g.l.

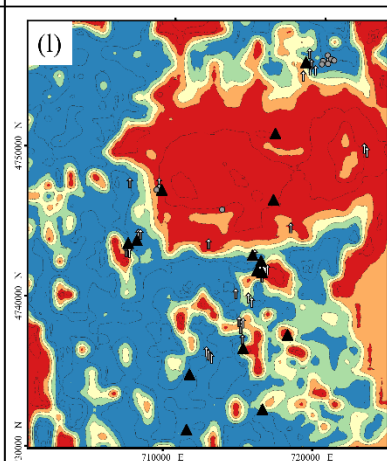
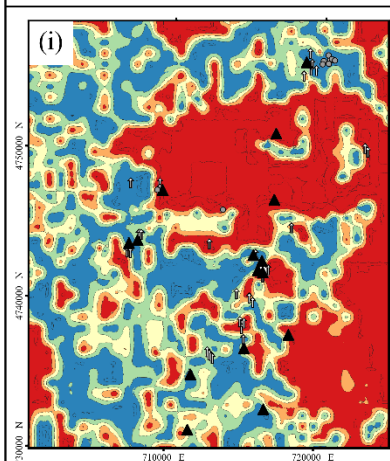
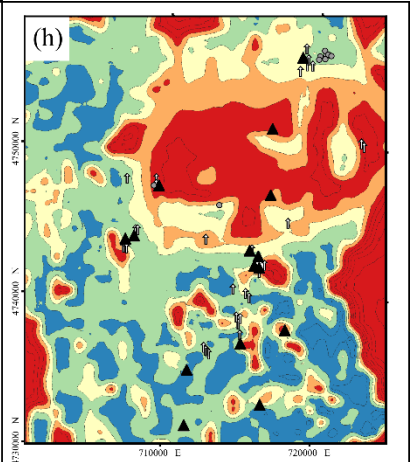
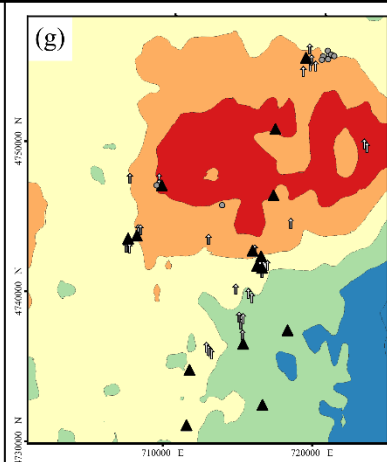
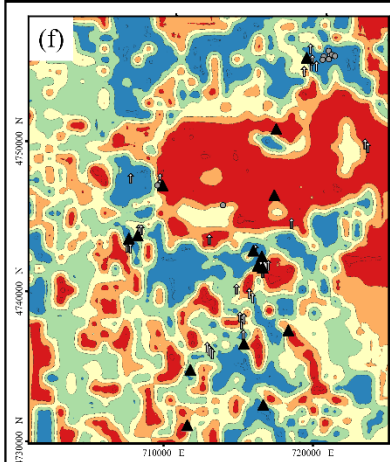


T06

0m  
b.g.l.



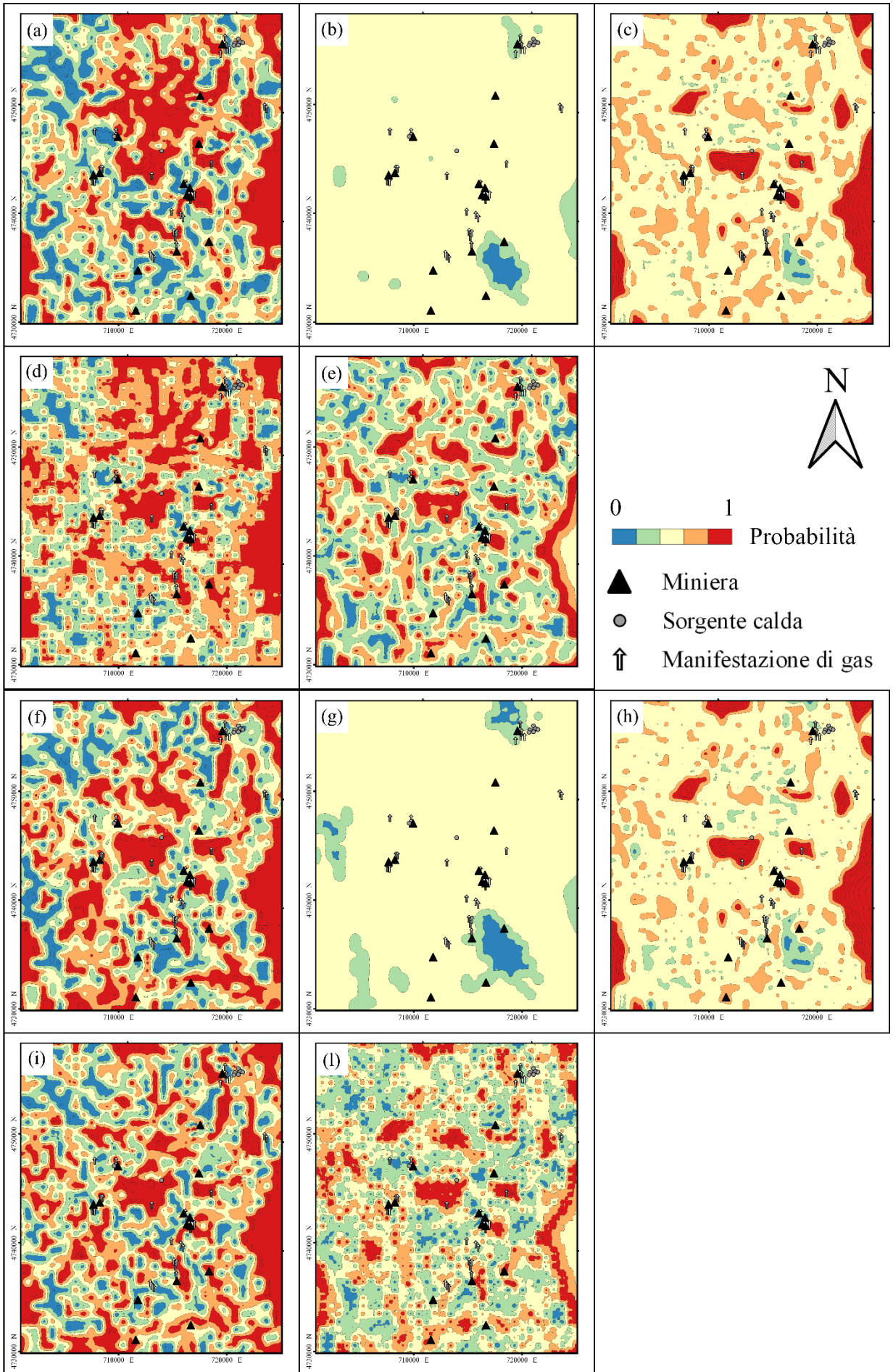
-100m  
b.g.l.





T07

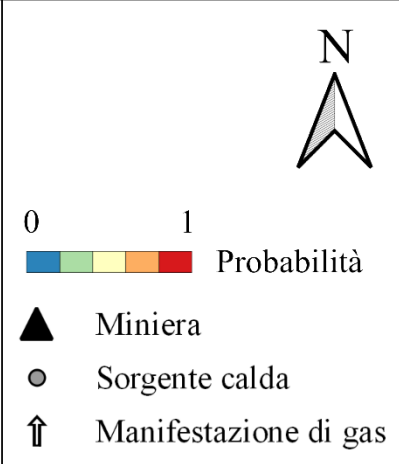
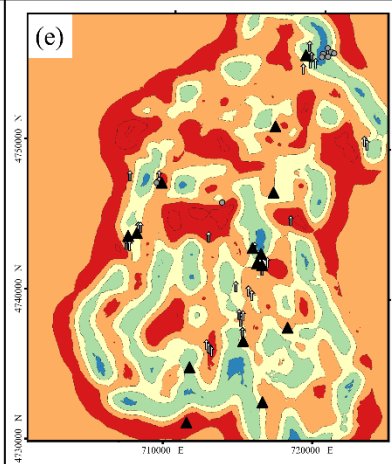
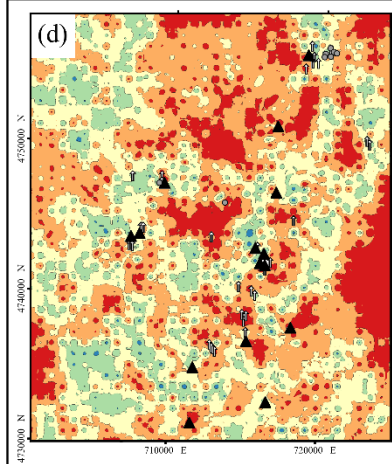
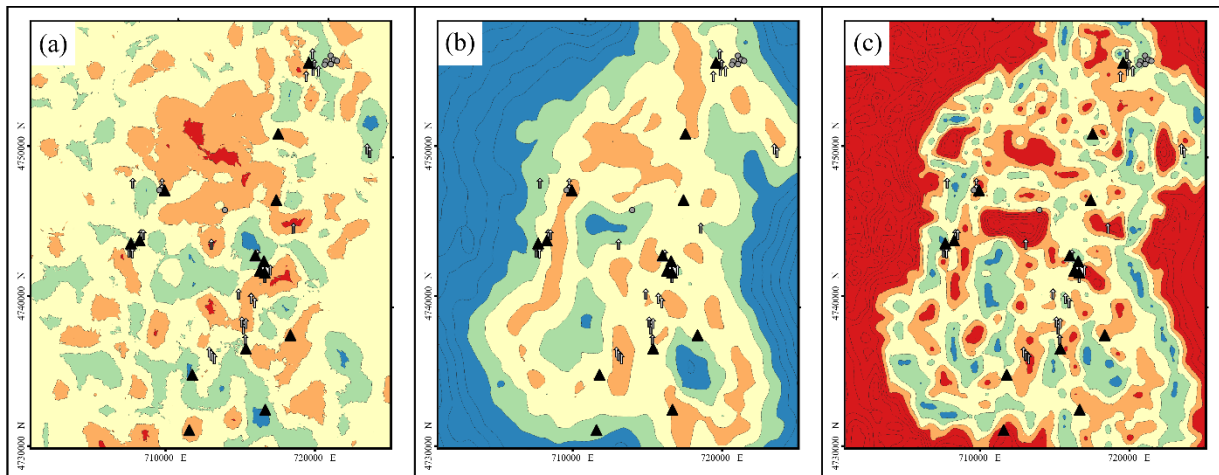
0m  
b.g.l.



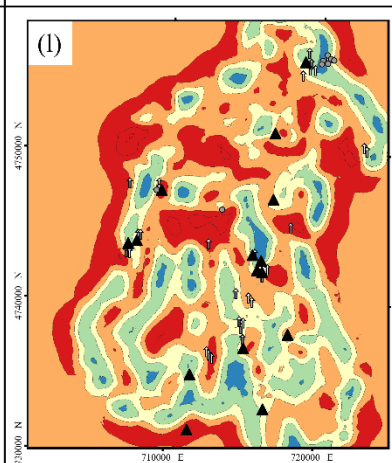
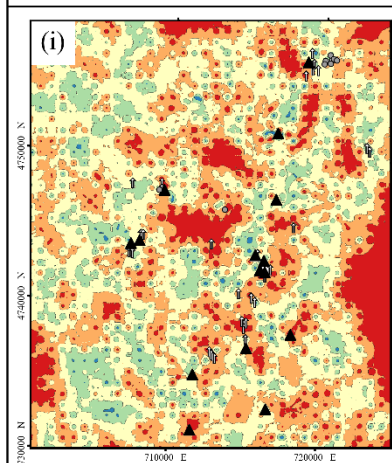
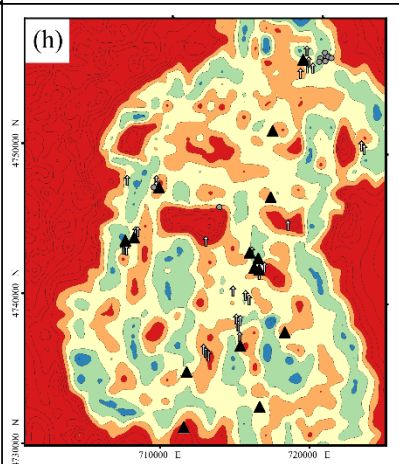
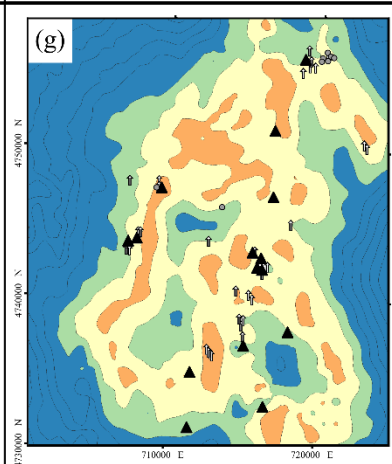
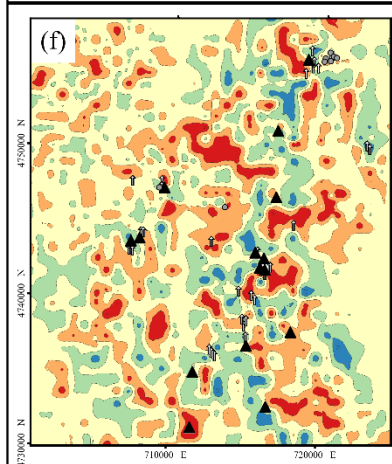
-100m  
b.g.l.

T08

0m  
b.g.l.

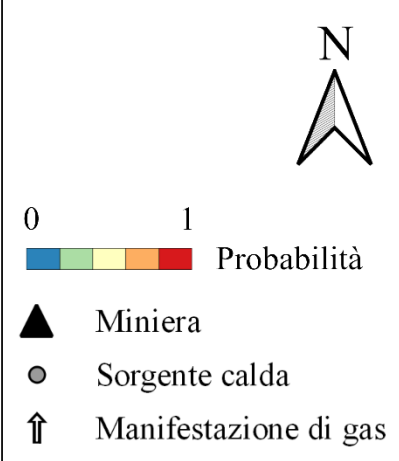
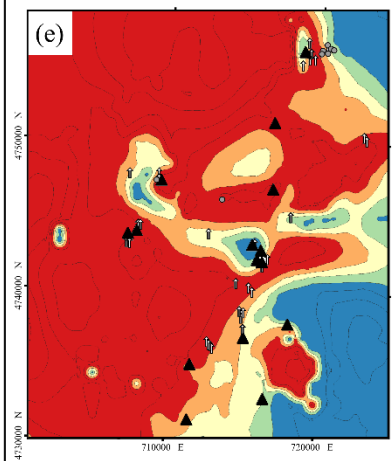
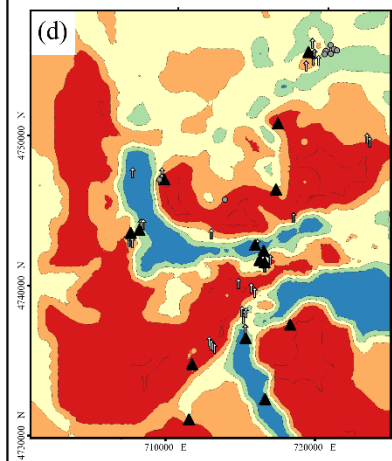
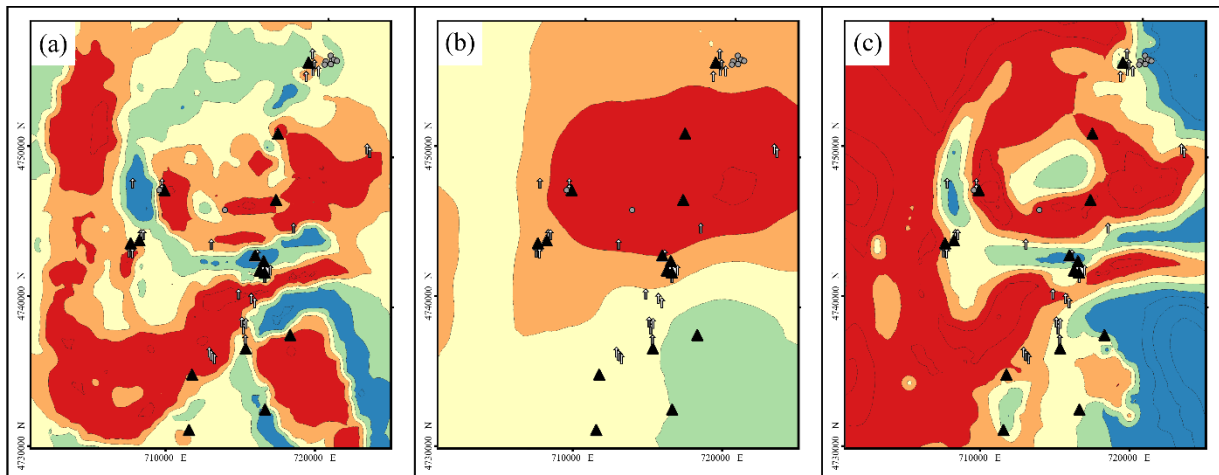


-100m  
b.g.l.






TA1

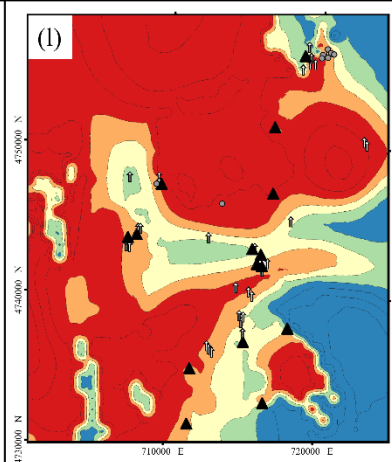
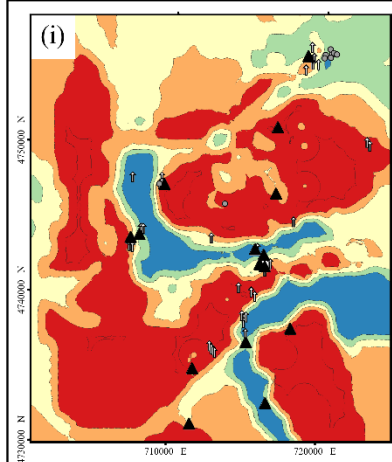
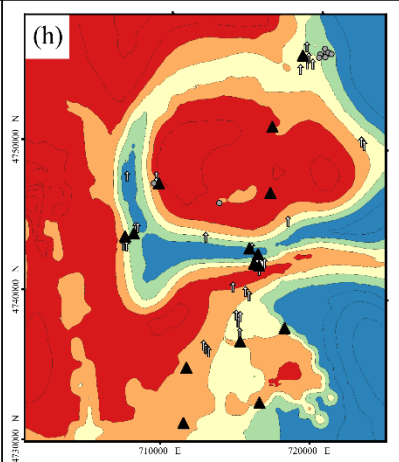
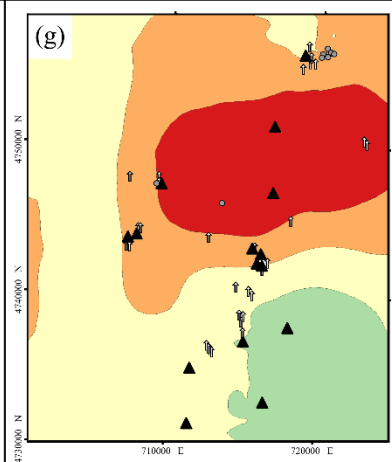
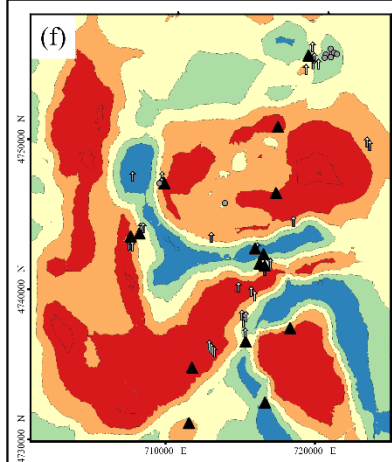
0m  
b.g.l.



0 1 Probabilità

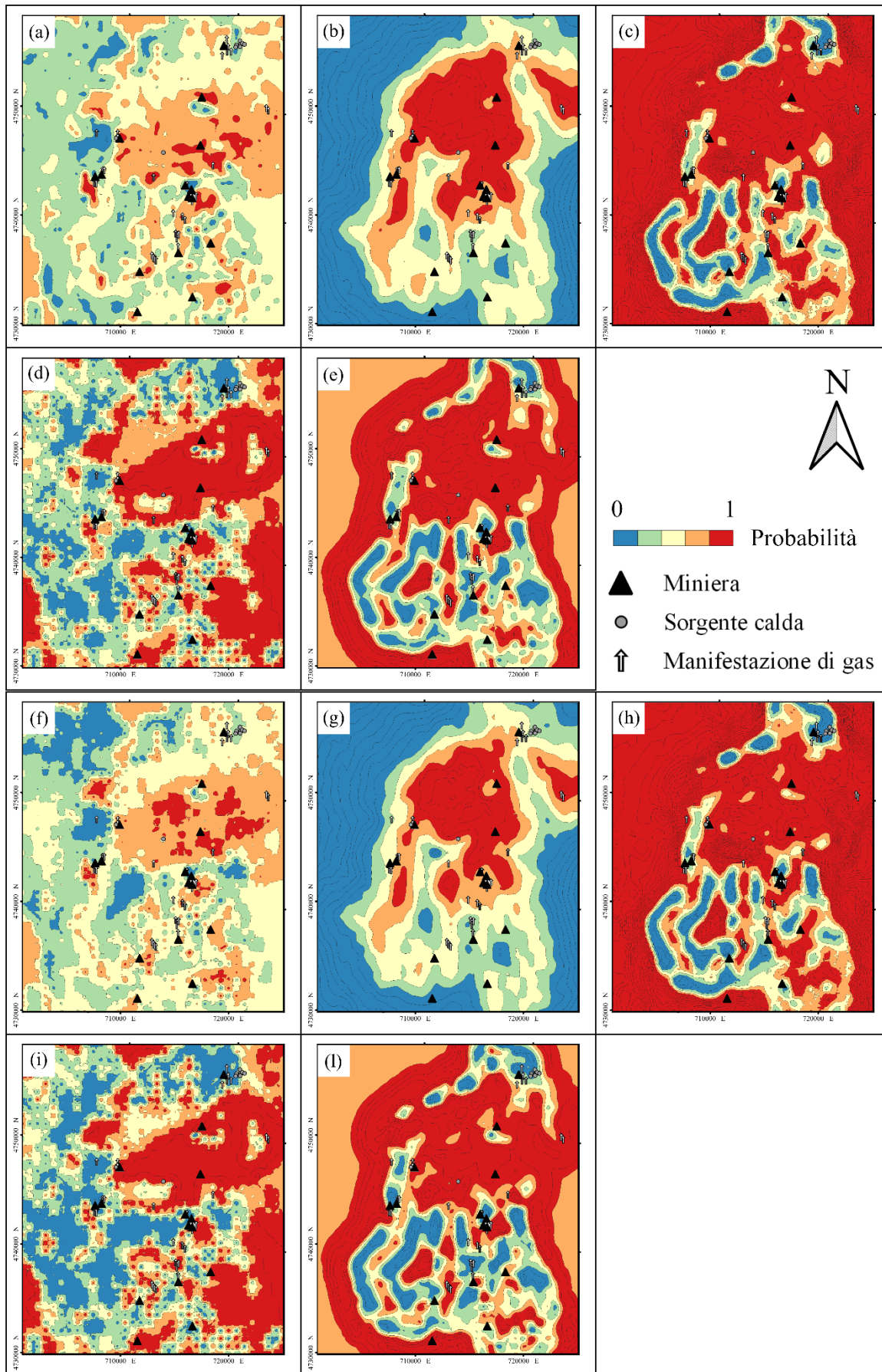
-  Miniera
-  Sorgente calda
-  Manifestazione di gas

-100m  
b.g.l.



TA3

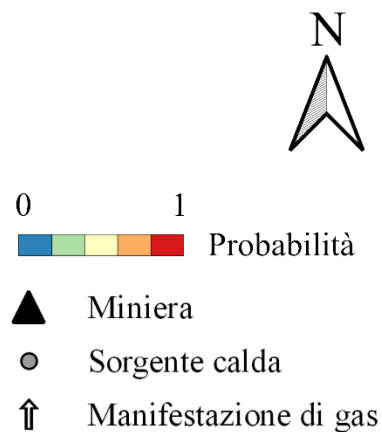
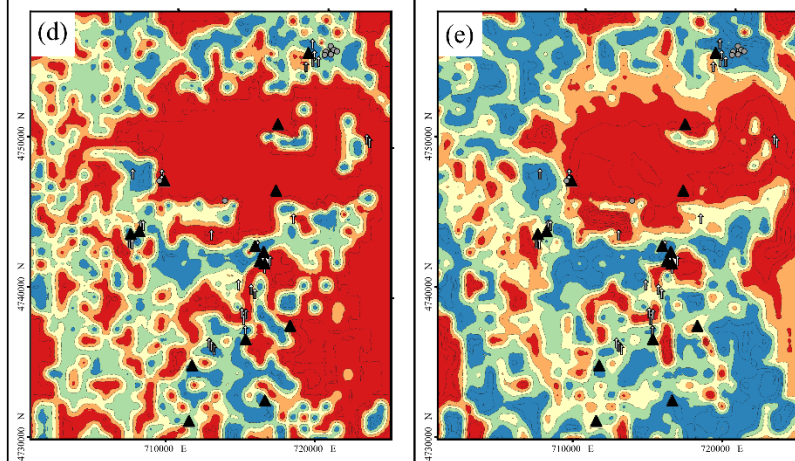
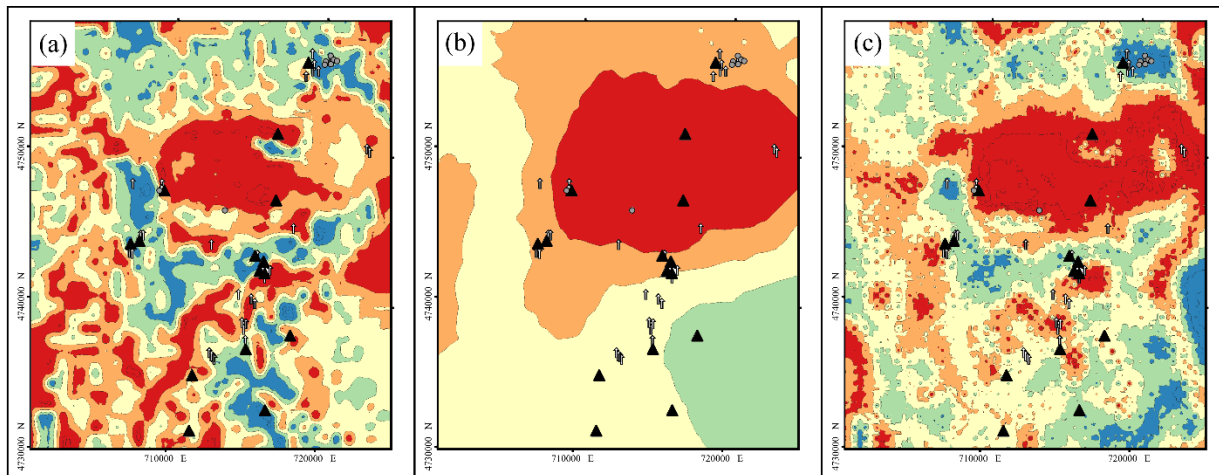
0m  
b.g.l.



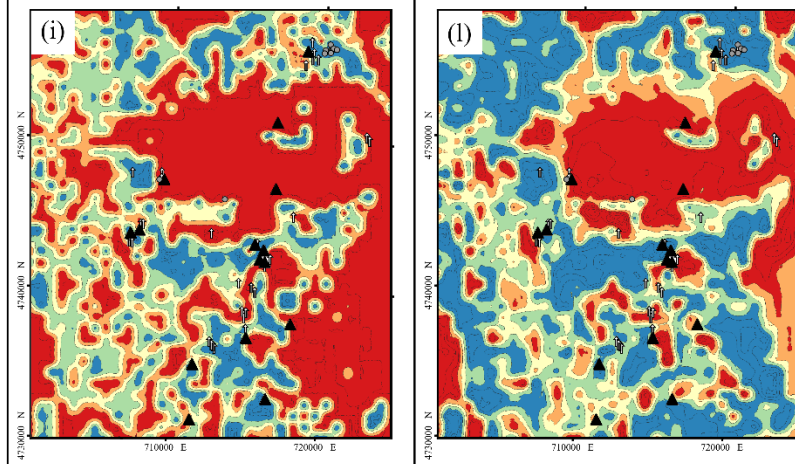
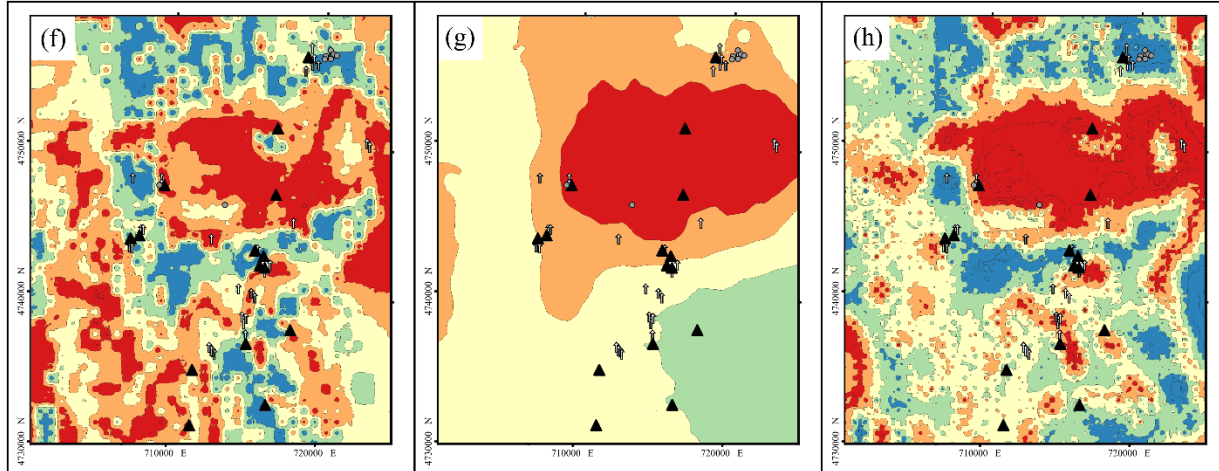
-100m  
b.g.l.

TA6

0m  
b.g.l.

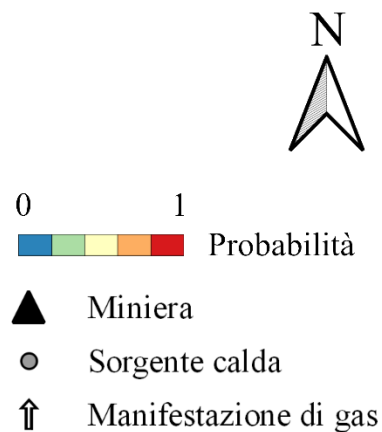
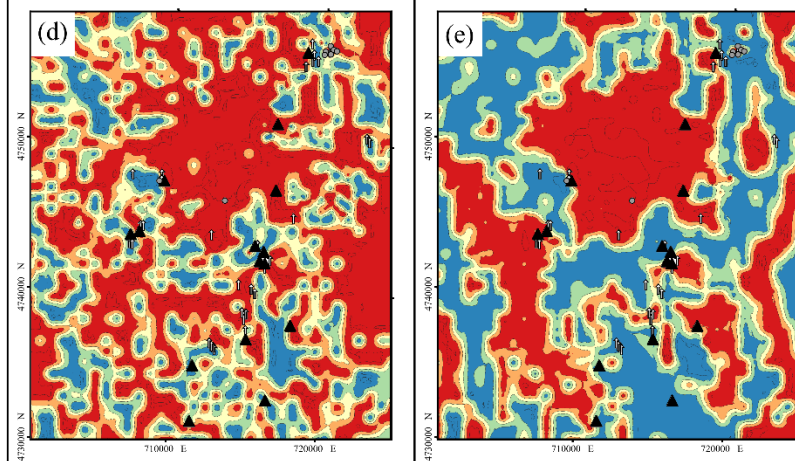
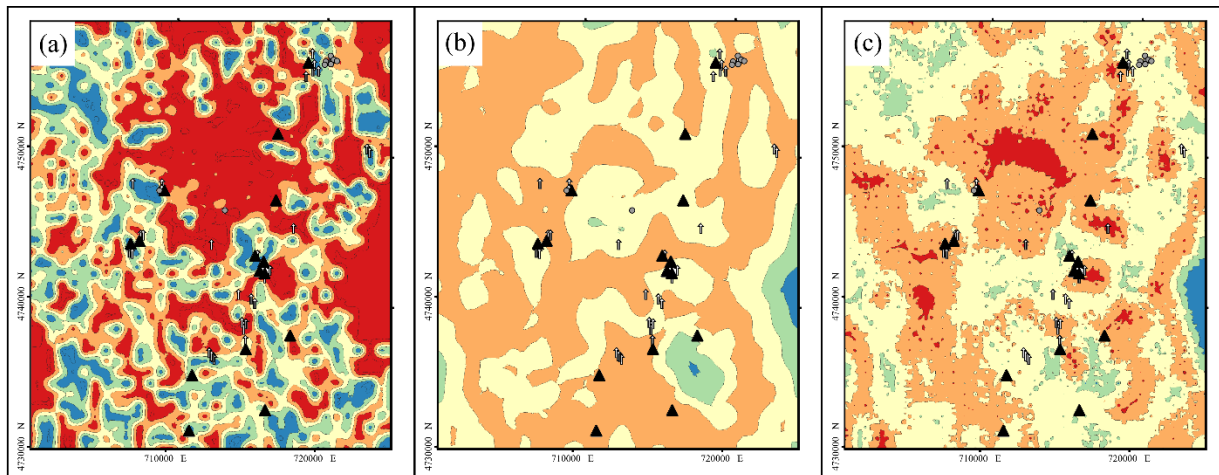


-100m  
b.g.l.

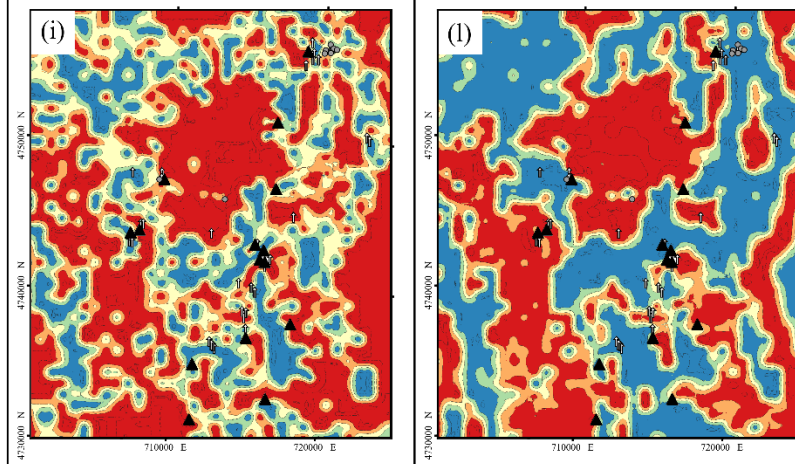
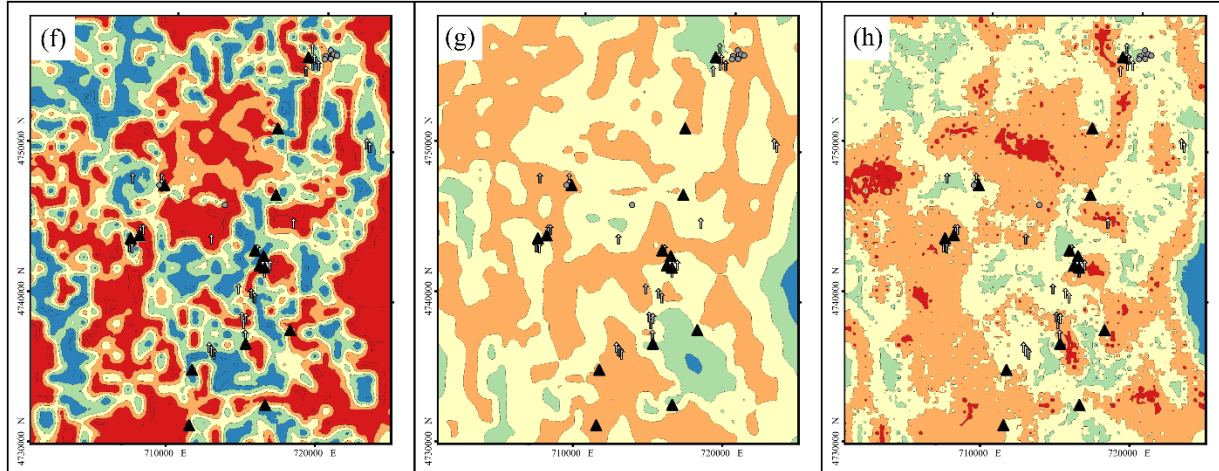


TA7

0m  
b.g.l.

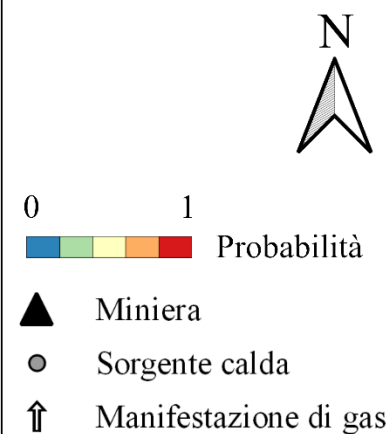
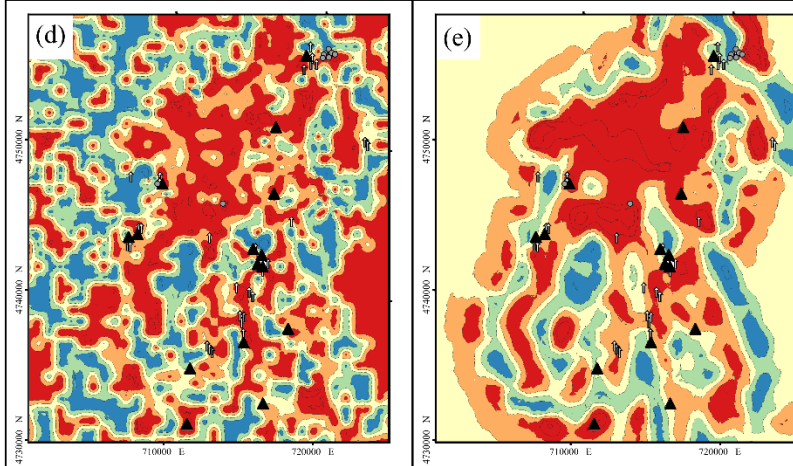
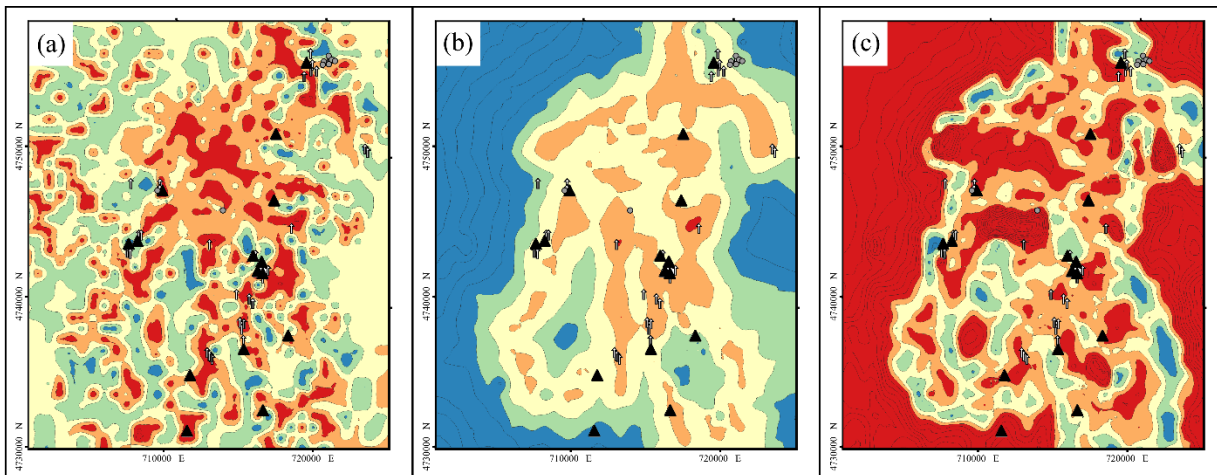


-100m  
b.g.l.

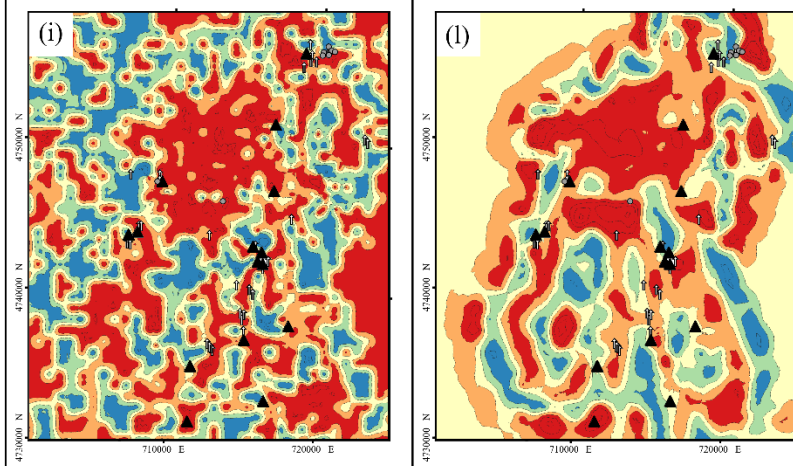
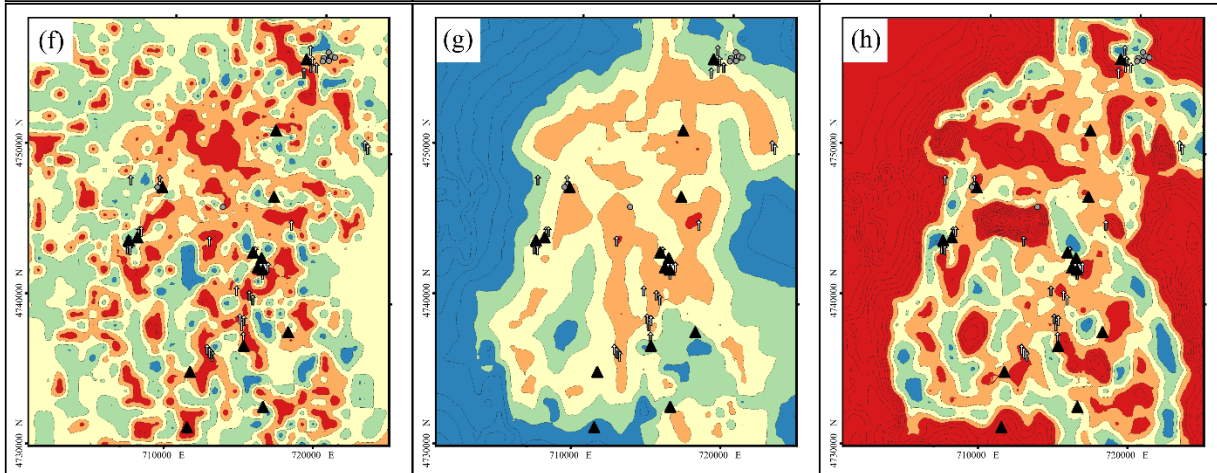


TA8

0m  
b.g.l.

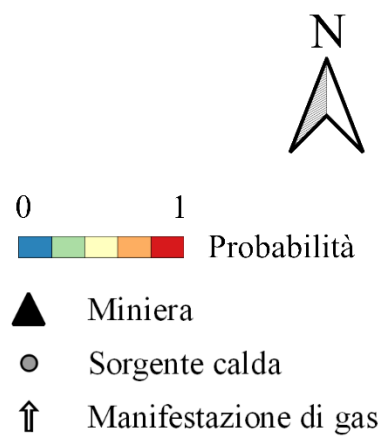
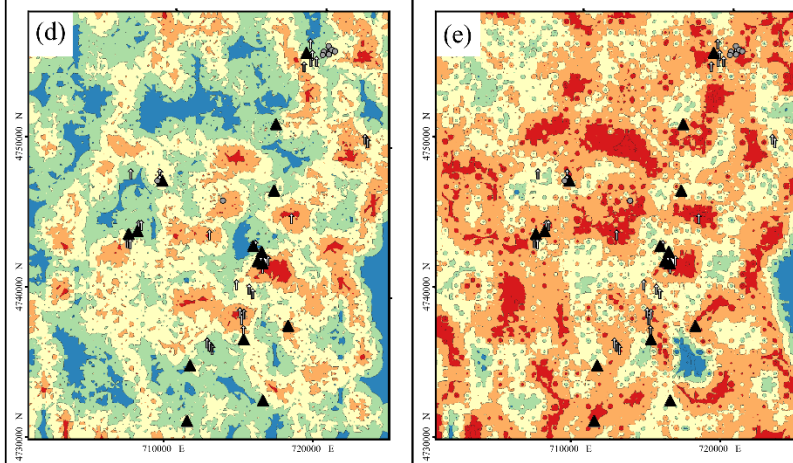
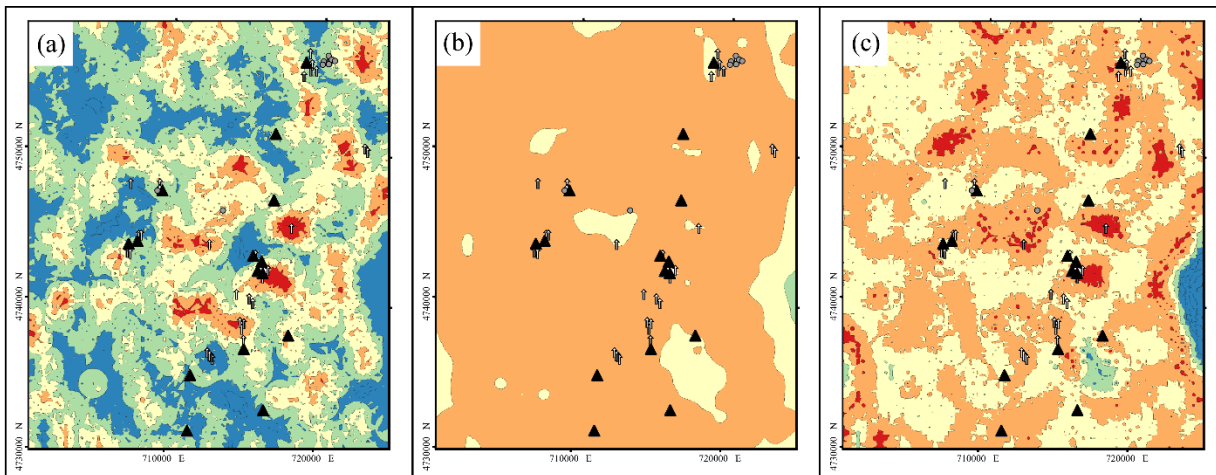


-100m  
b.g.l.

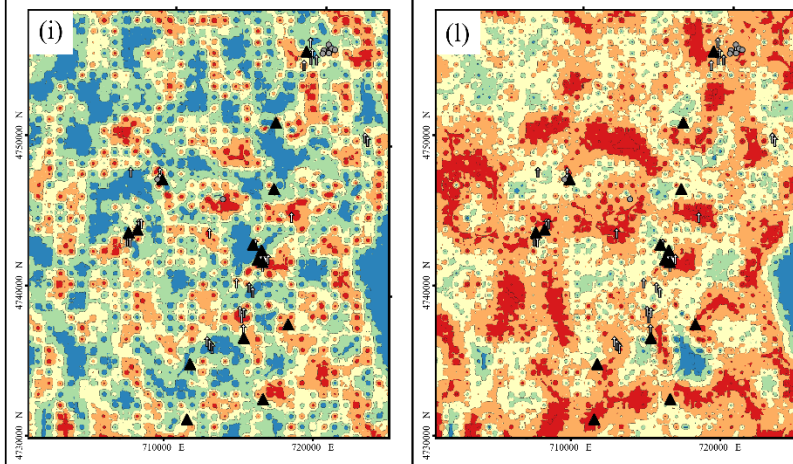
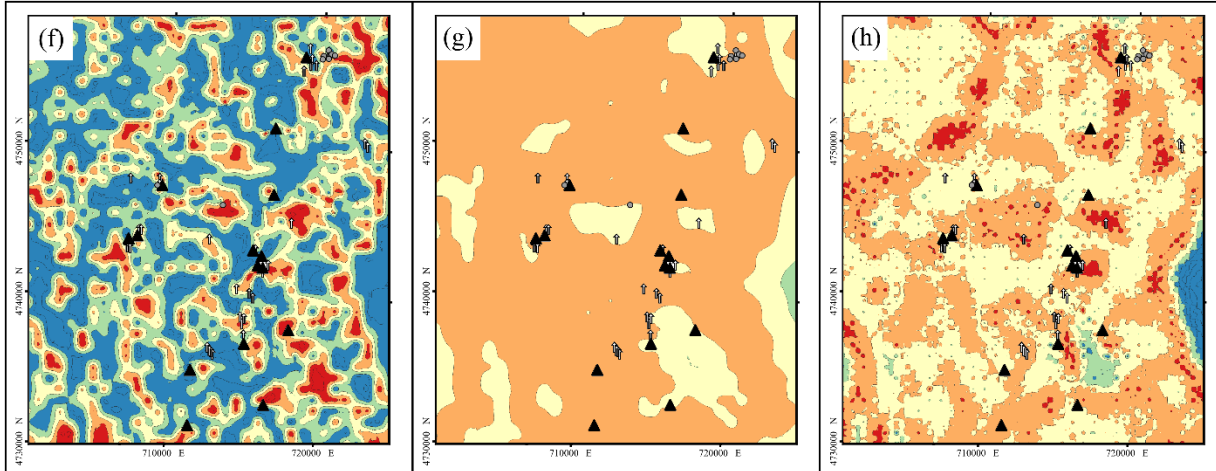


TB5

0m  
b.g.l.



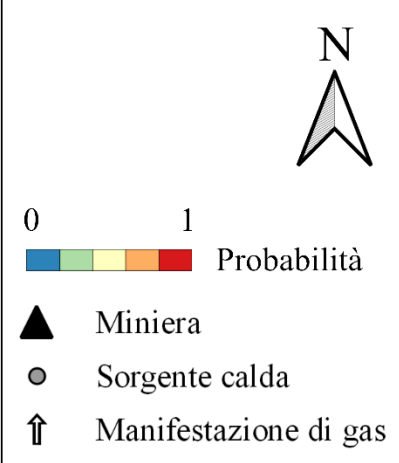
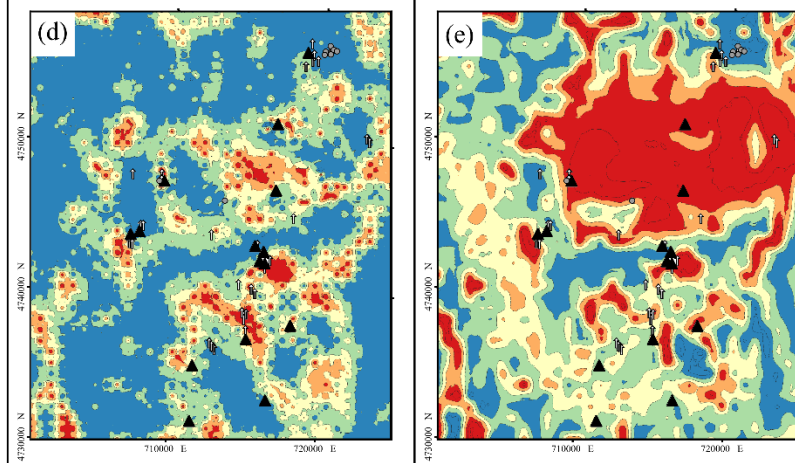
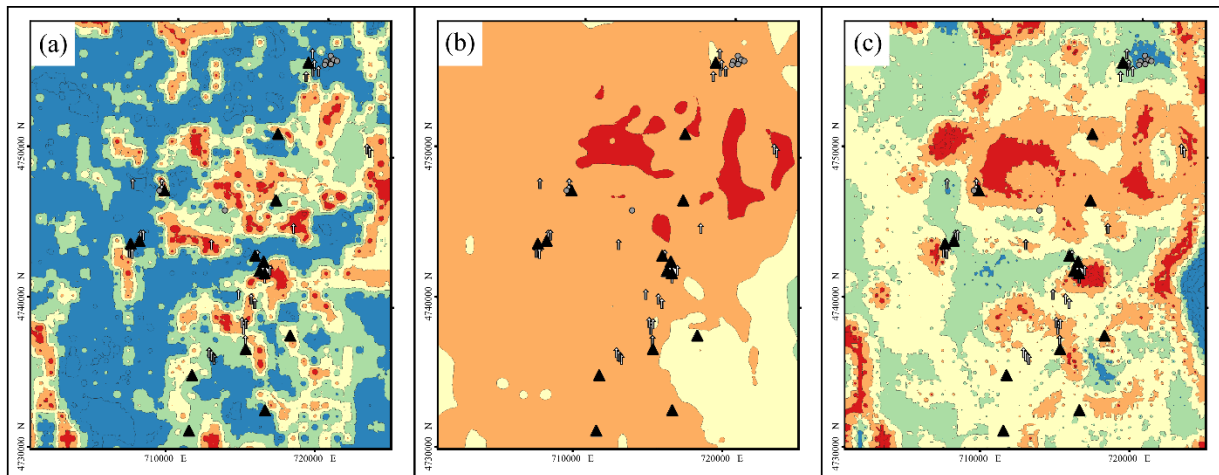
-100m  
b.g.l.



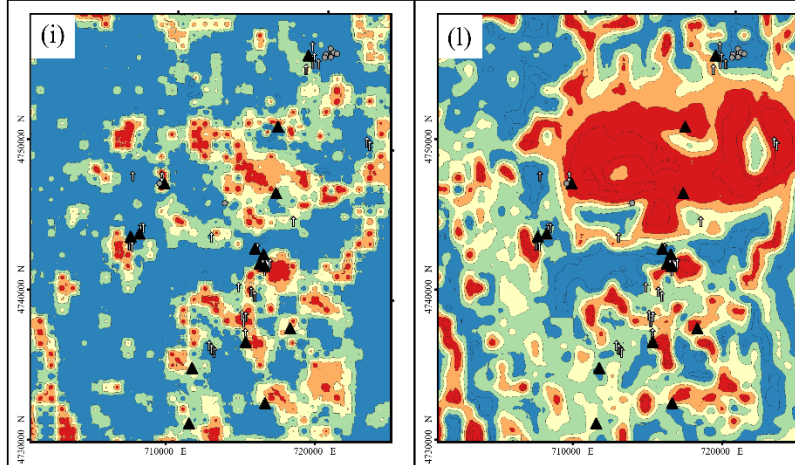
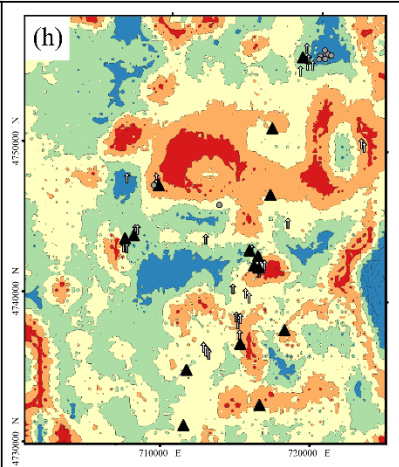
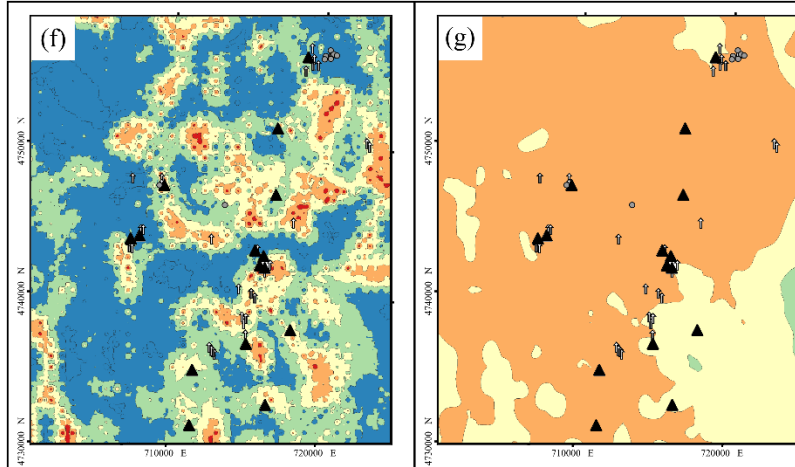


TB6

0m  
b.g.l.

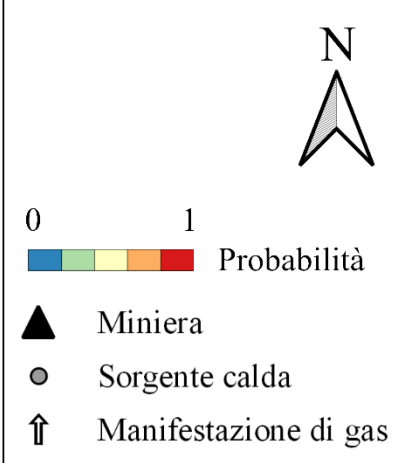
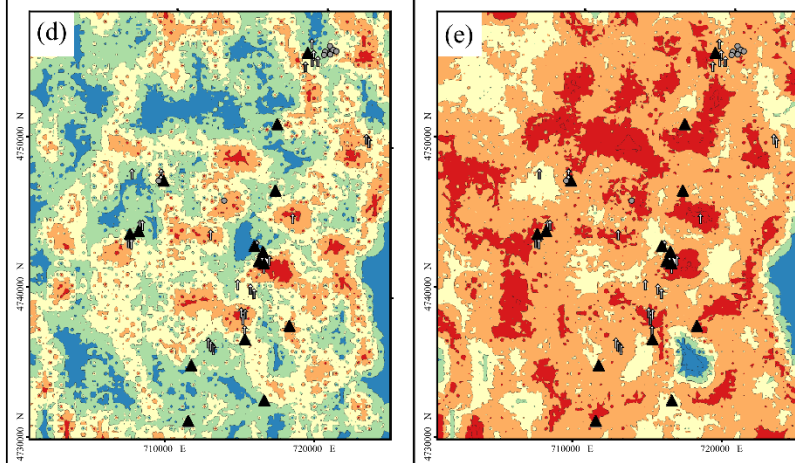
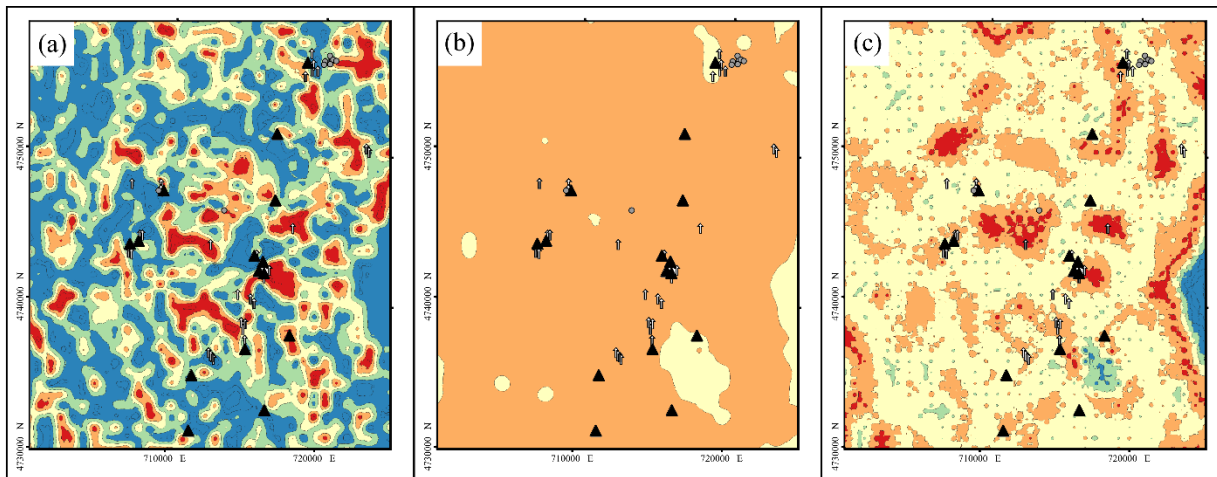


-100m  
b.g.l.

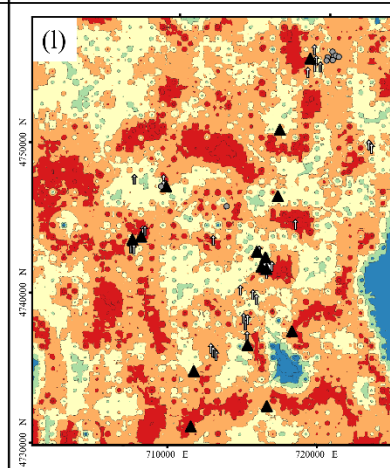
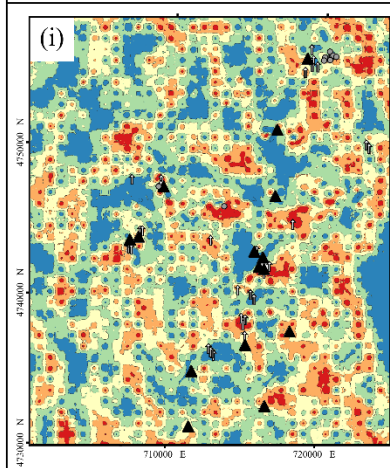
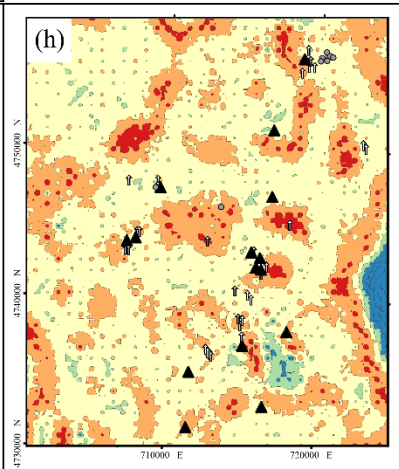
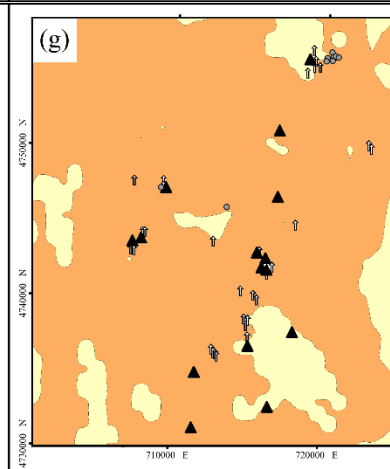
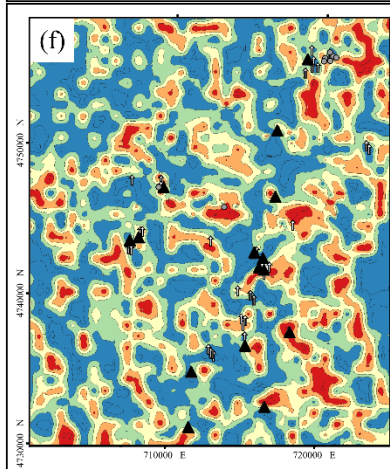


TB7

0m  
b.g.l.

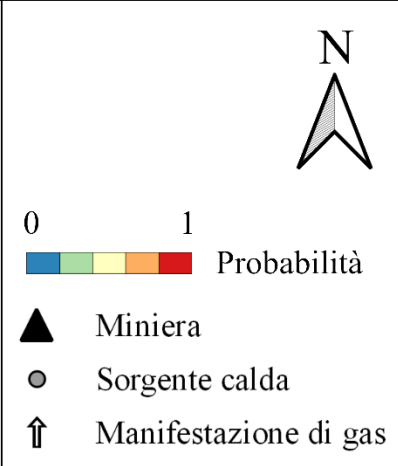
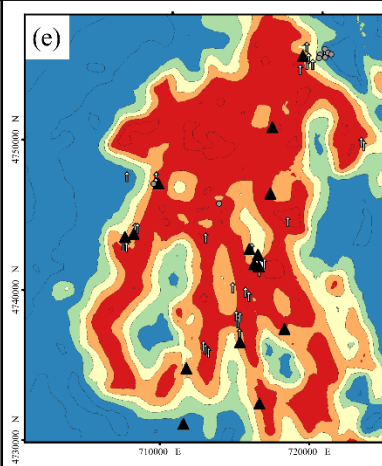
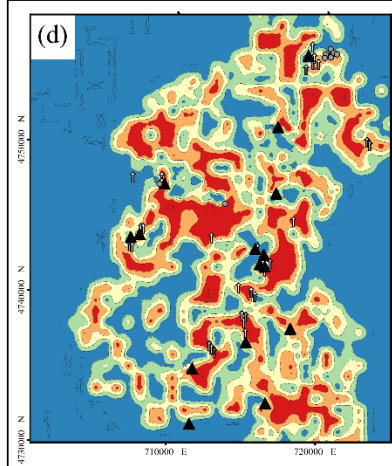
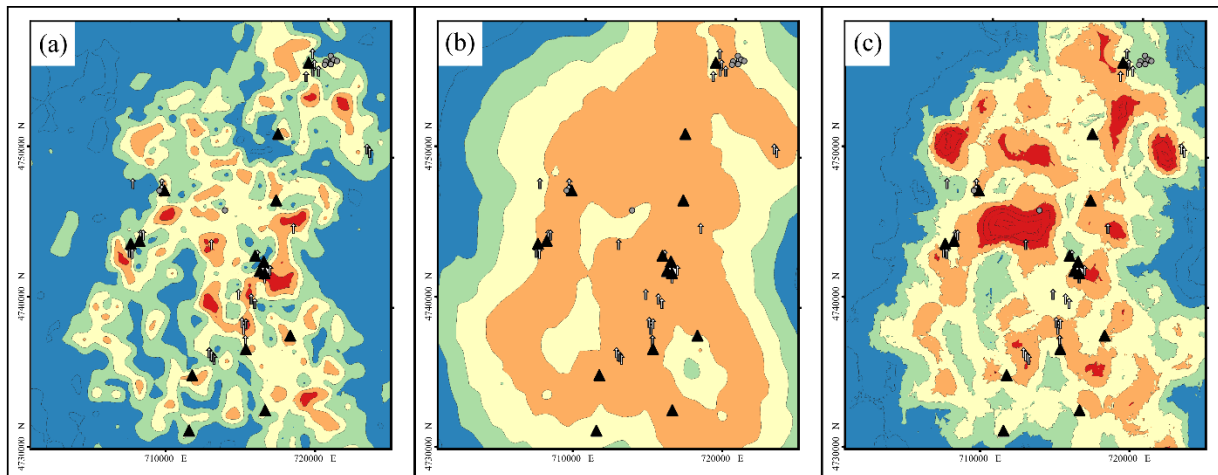


-100m  
b.g.l.



TB8

0m  
b.g.l.



0 1  
Probabilità

- ▲ Miniera
- Sorgente calda
- ↑ Manifestazione di gas

-100m  
b.g.l.

