

ALMA MATER STUDIORUM – UNIVERSITÀ DI BOLOGNA

SCUOLA DI INGEGNERIA E ARCHITETTURA

DICAM – Dipartimento di Ingegneria Civile, Ambientale e dei Materiali

Corso di Laurea Magistrale in Ingegneria Civile

TESI DI LAUREA MAGISTRALE

**PROVE SU TAVOLA VIBRANTE DI UN SILO METALLICO A
FONDO PIANO: ANALISI DELLA RISPOSTA SISMICA
MEDIANTE MISURAZIONI OTTICHE**

APPENDICE A – Parte 7

CANDIDATO

Caterina Neri

RELATORE

Chiar.mo Prof. Ing. Stefano Silvestri

Anno Accademico 2018-2019

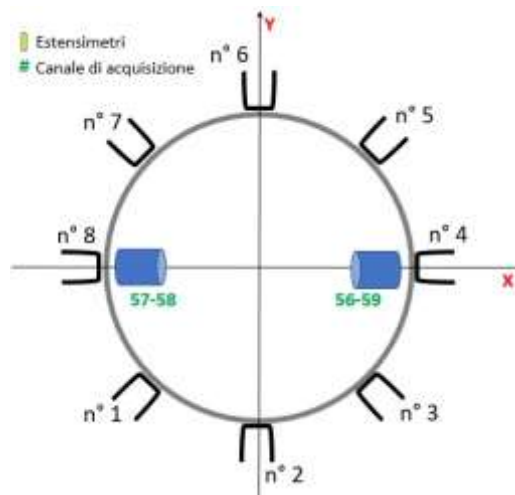
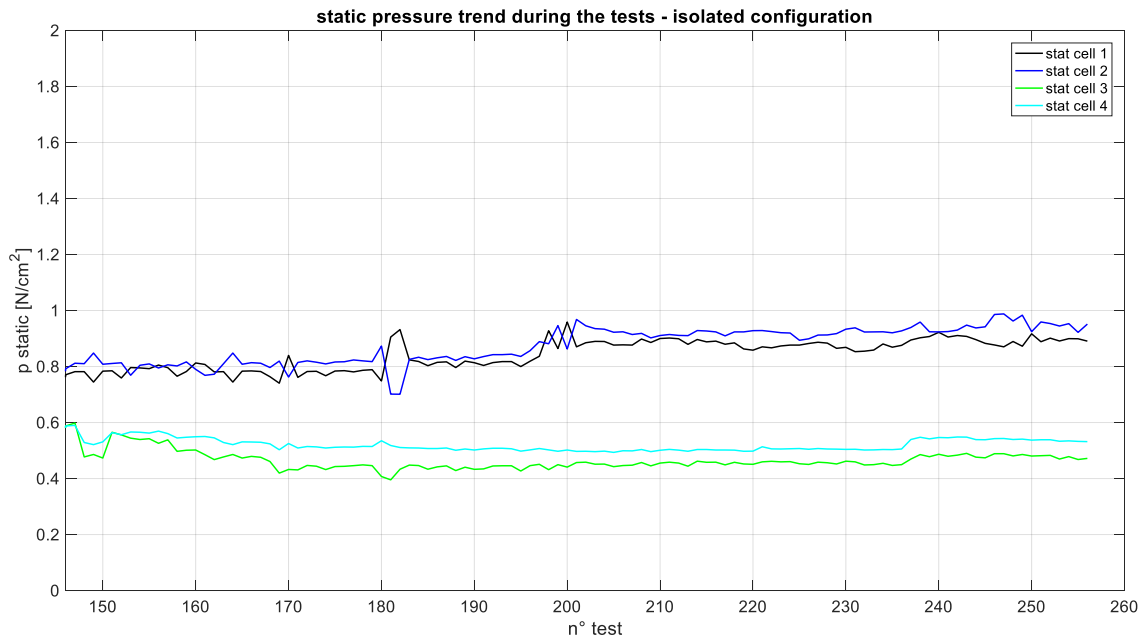
Sessione I

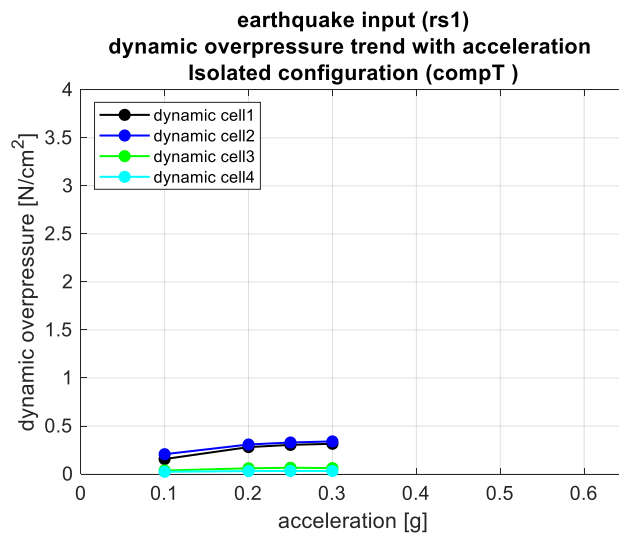
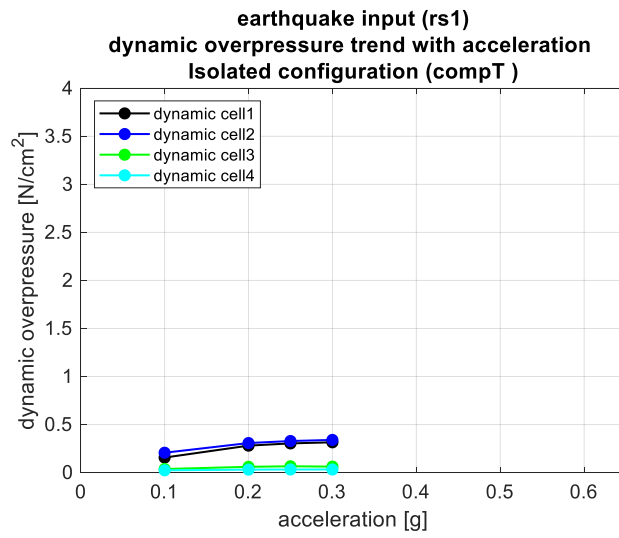
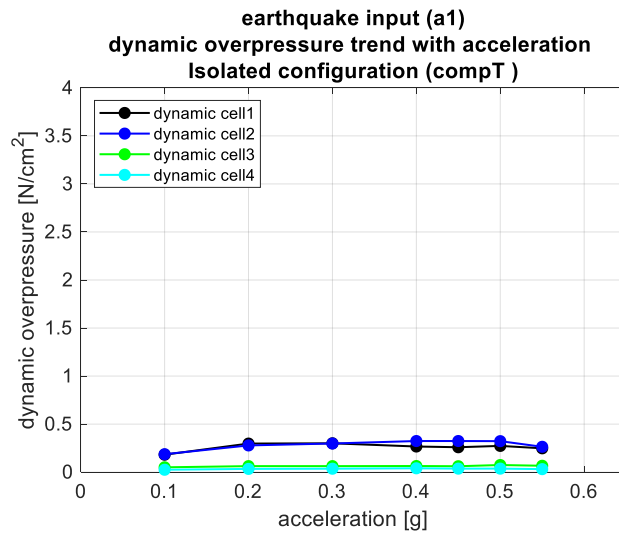
INDICE APPENDICE A

A. 4 Fase di riempimento	1
A. 4.2 Celle di pressione	1
A. 4.3 Estensimetri.....	2
A. 5 Prove in configurazione a base fissa	6
A. 5.1 Celle di pressione	6
A. 5.2 Accelerometri.....	12
A. 5.3 Amplificazioni dinamiche.....	28
A. 5.4 Estensimetri.....	30
A. 5.5.1 Sforzi nei montanti – Parte 1	94
A. 5.5.2 Sforzi nei montanti – Parte 2	174
A. 5.6.1 Markers – Parte 1	290
A. 5.6.2 Markers – Parte 2	335
A. 6 Prove in configurazione a base isolata	370
A. 6.1 Celle di pressione	370
A. 6.2 Accelerometri.....	372
A. 6.3 Amplificazioni dinamiche.....	382
A. 6.4 Estensimetri.....	383
A. 6.5.1 Sforzi nei montanti – Parte 1	423
A. 6.5.2 Sforzi nei montanti – Parte 2	483
A. 6.6.1 Markers – Parte 1	547
A. 6.6.2 Markers – Parte 2	577

A. 6 Prove in configurazione a base isolata

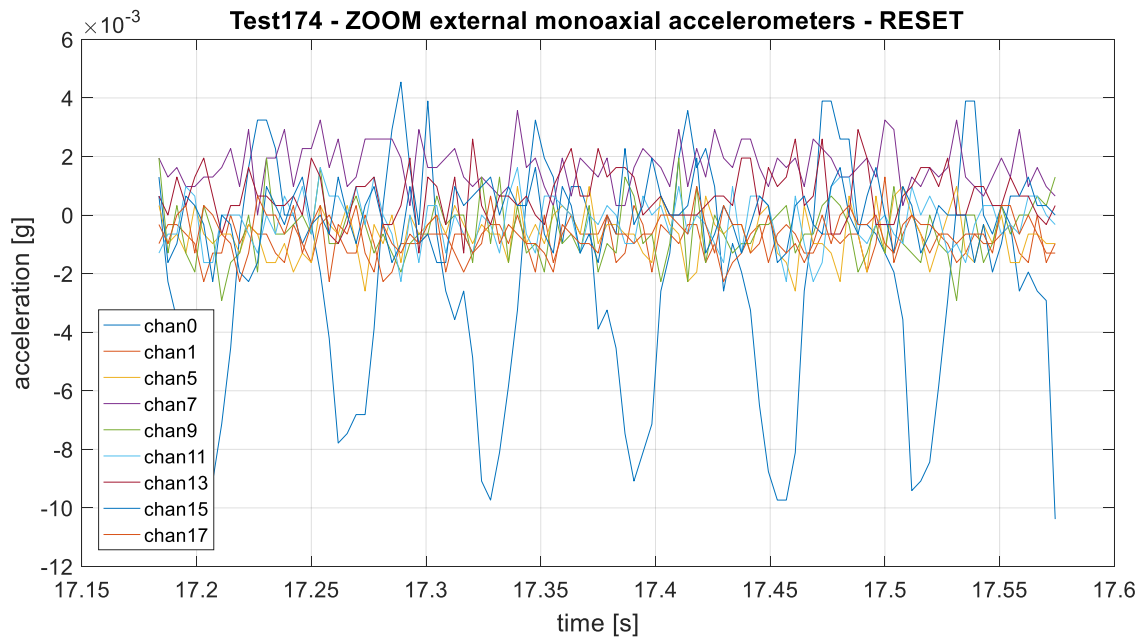
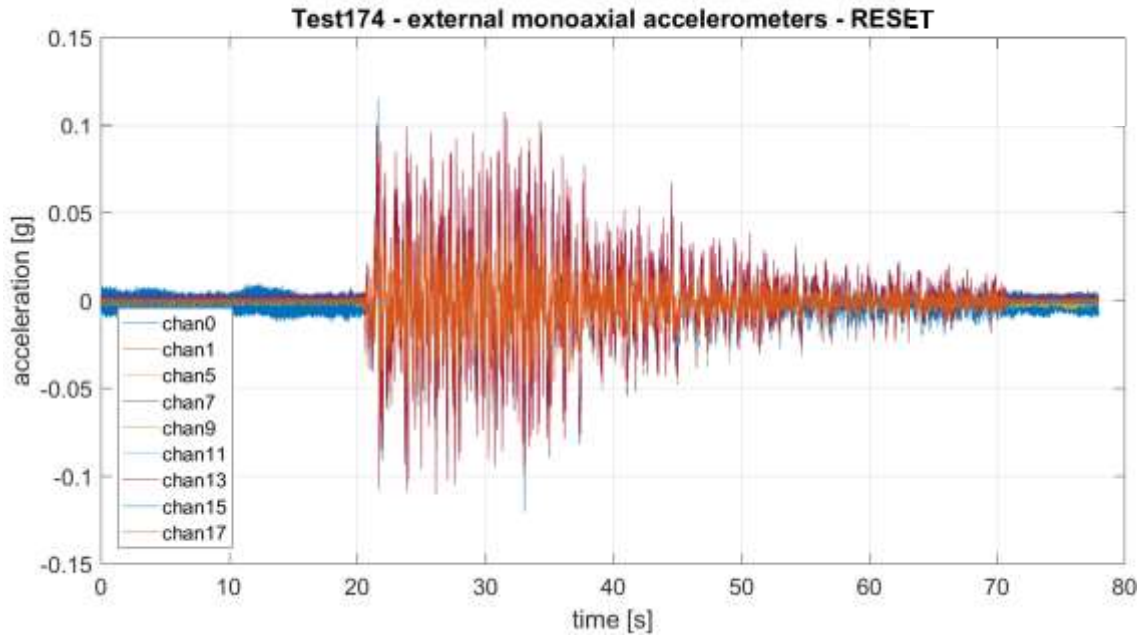
A. 6.1 Celle di pressione



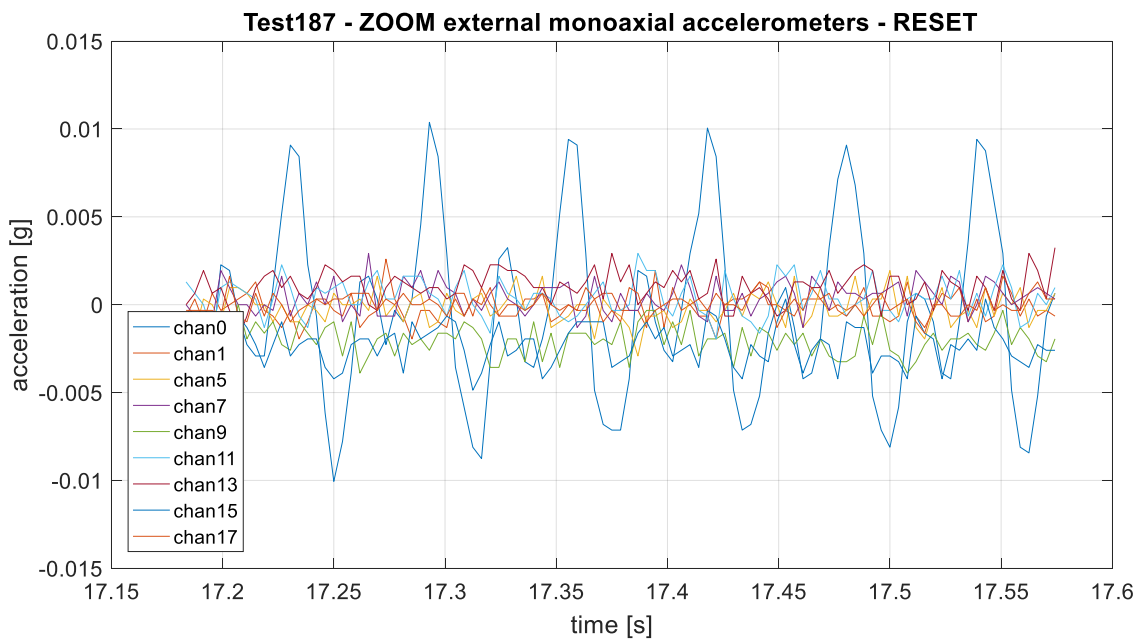
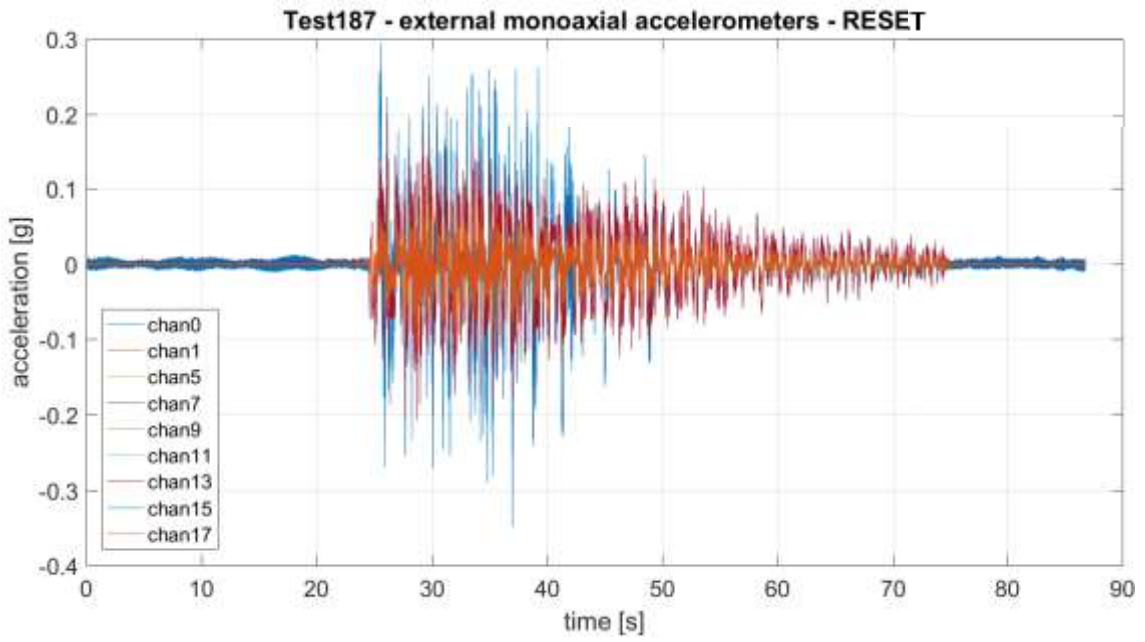


A. 6.2 Accelerometri

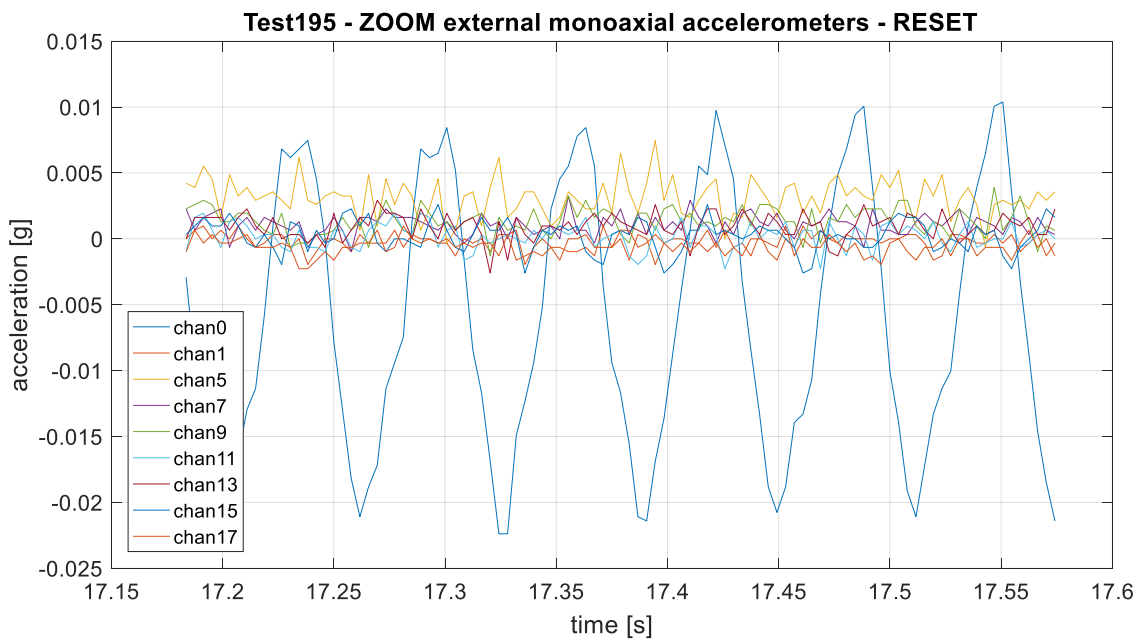
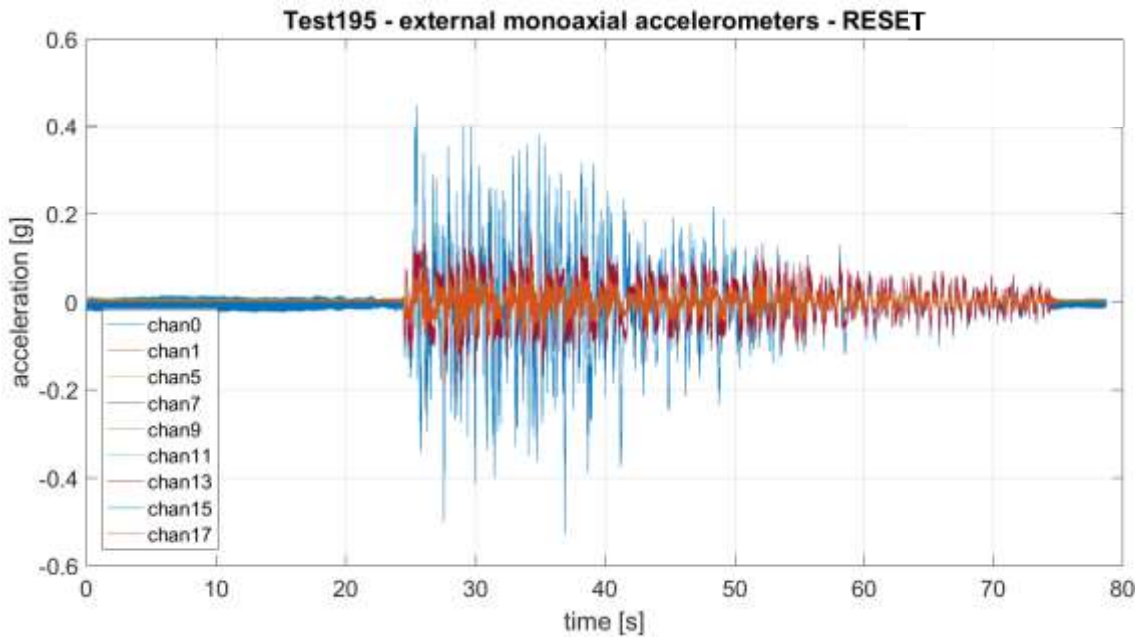
Earthquake input A1 0.1 g: Test 174



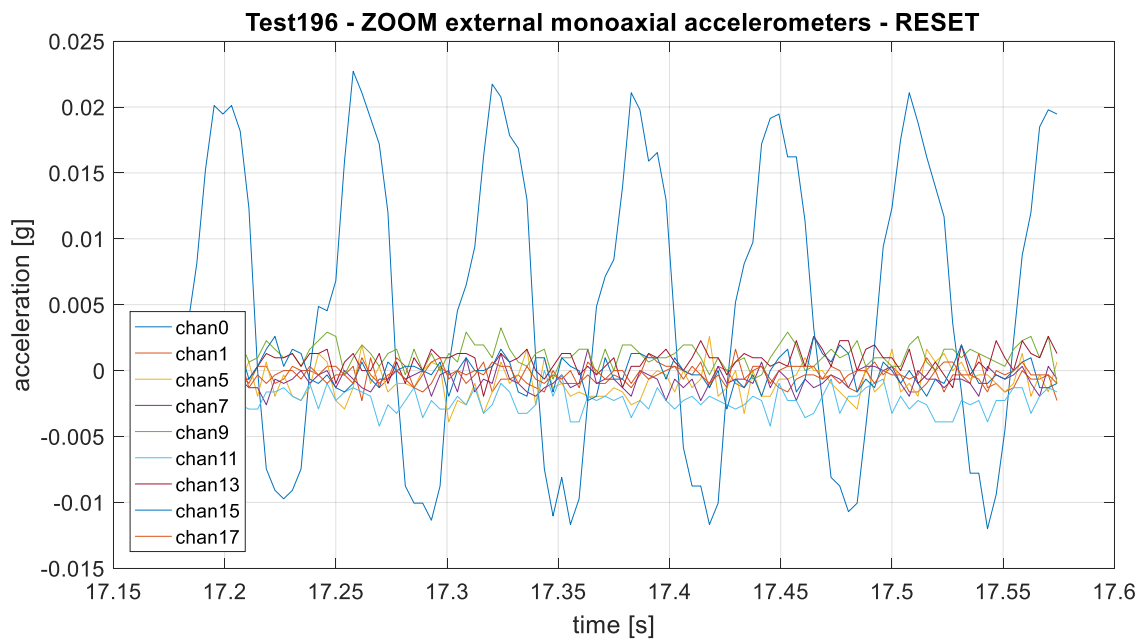
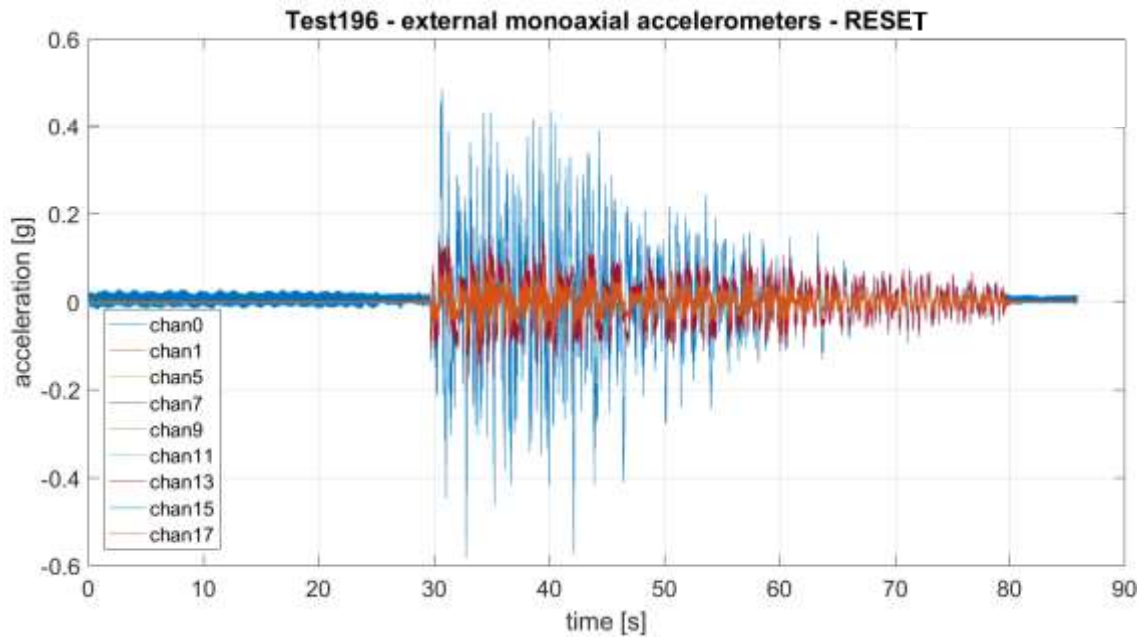
Earthquake input A1 0.3 g: Test 187



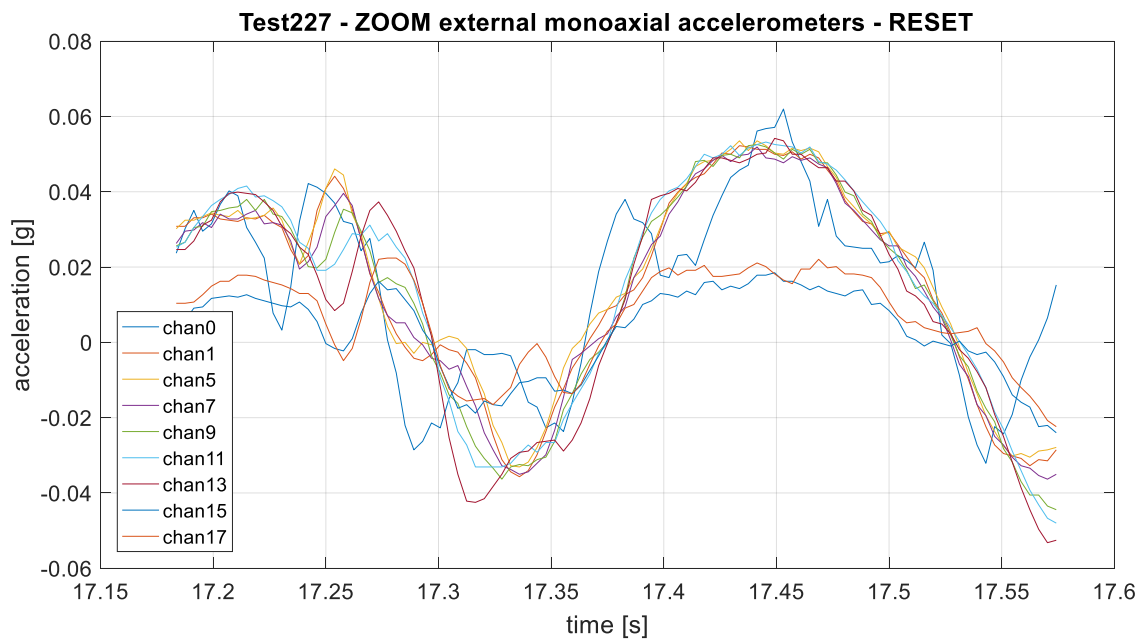
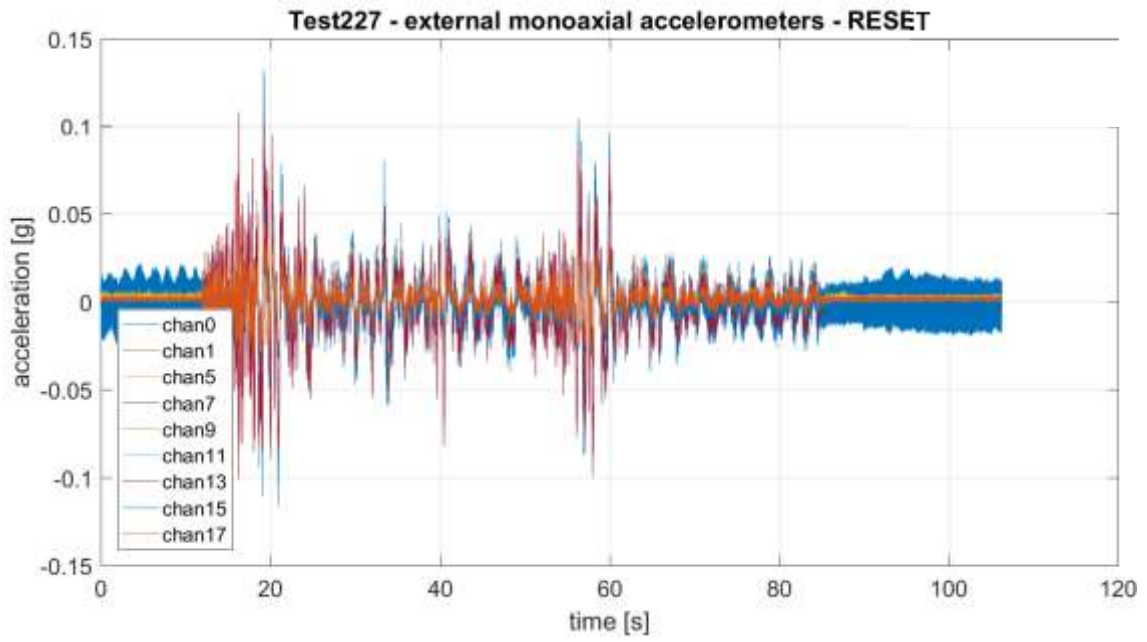
Earthquake input A1 0.5 g: Test 195



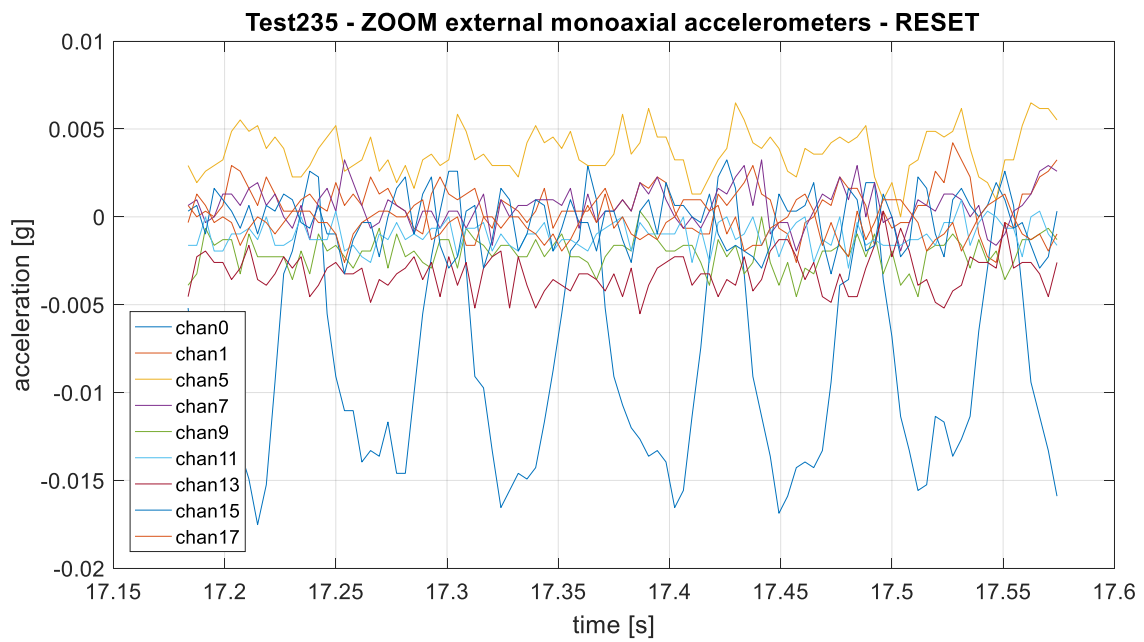
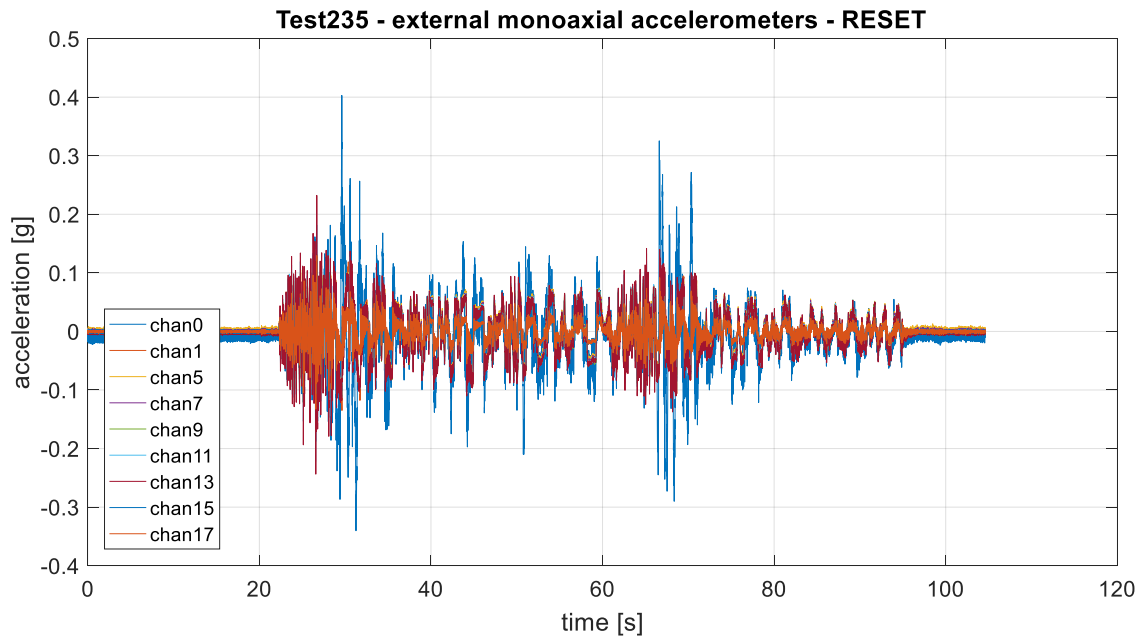
Earthquake input A1 0.55 g: Test 196



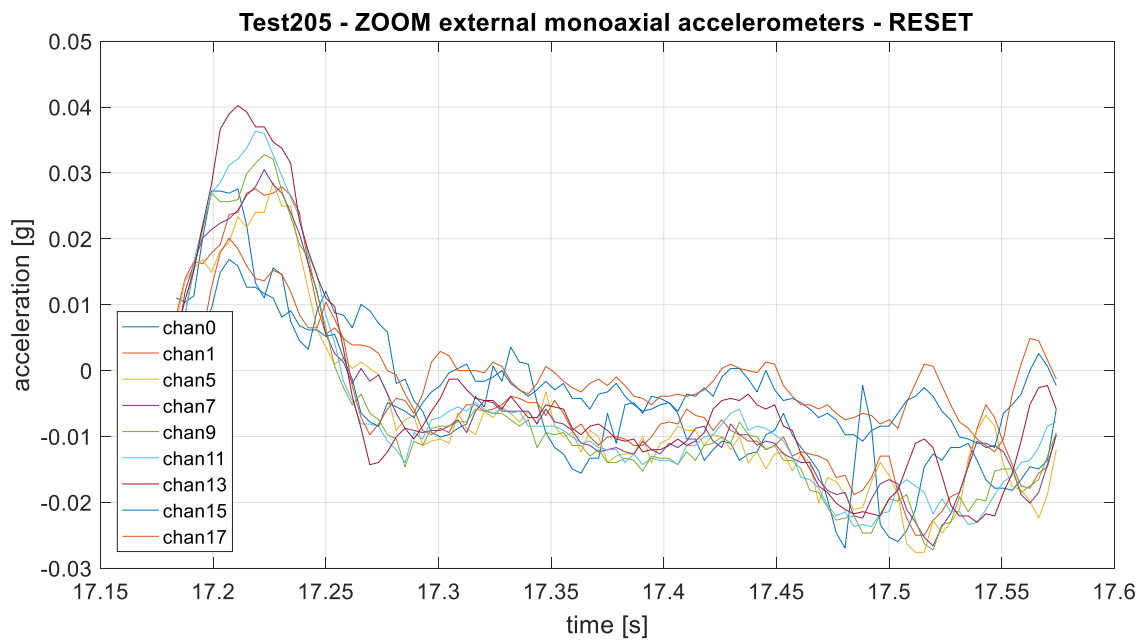
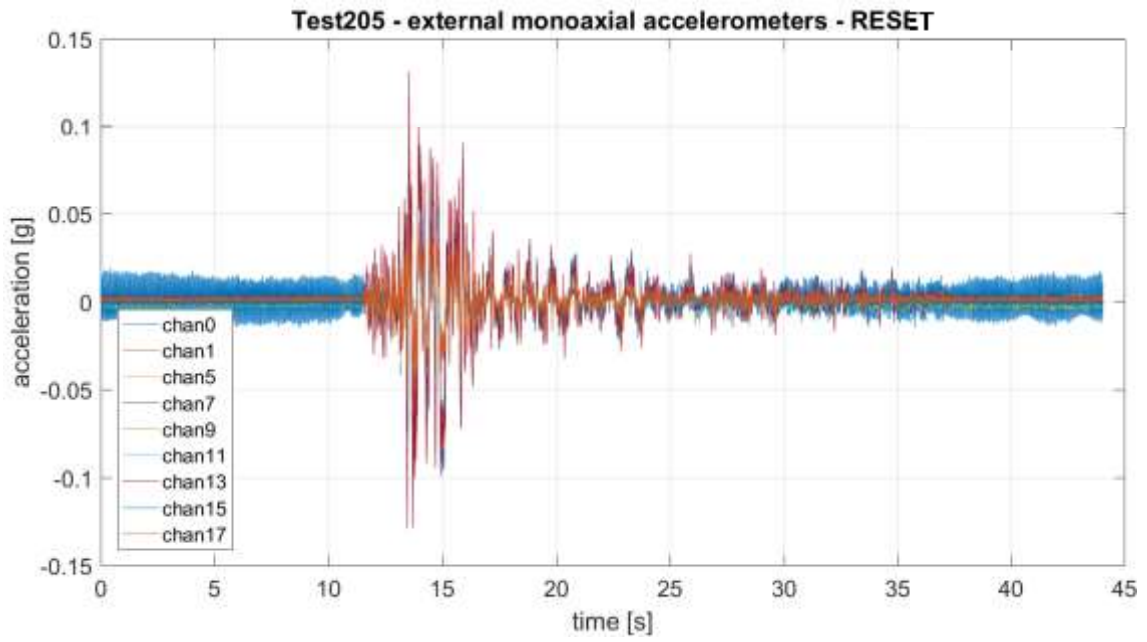
Earthquake input RS1 0.1 g: Test 227



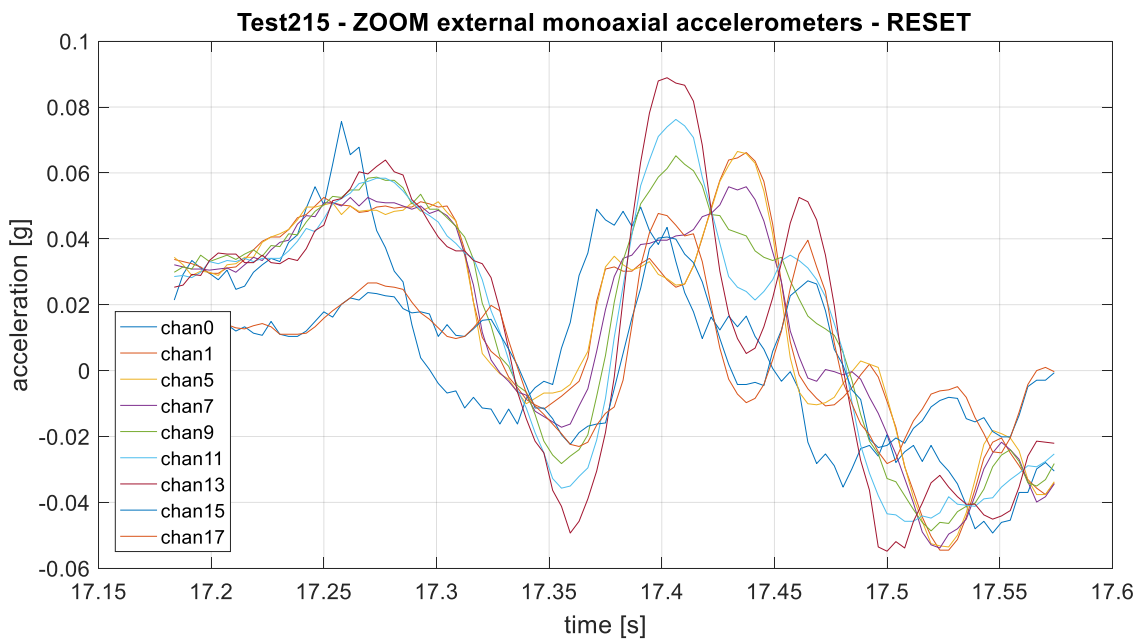
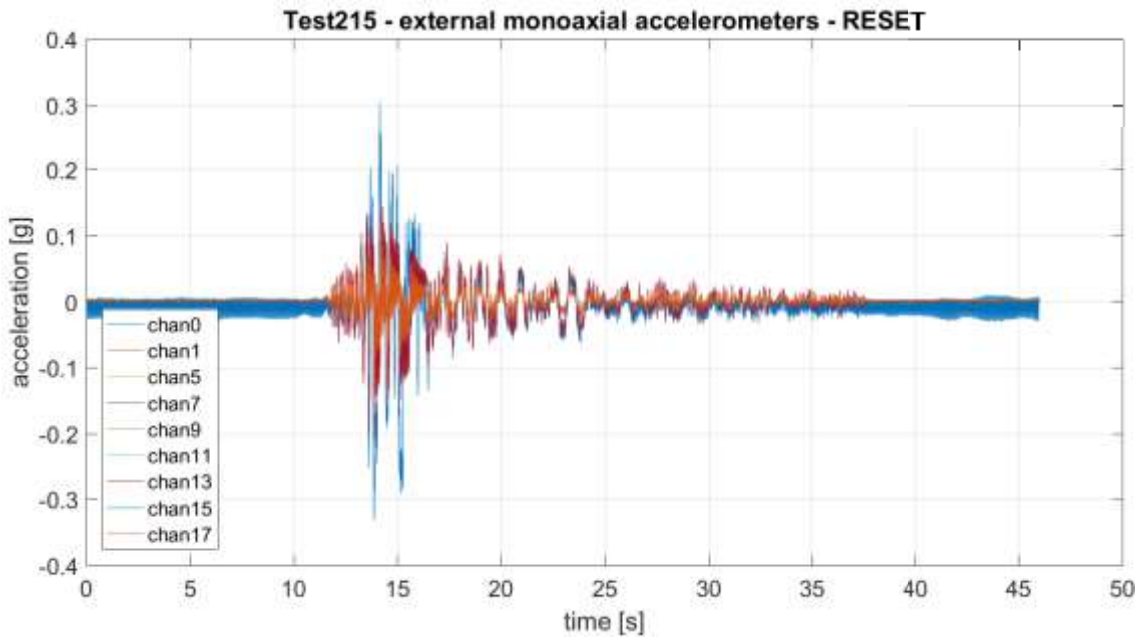
Earthquake input RS1 0.3 g: Test 235



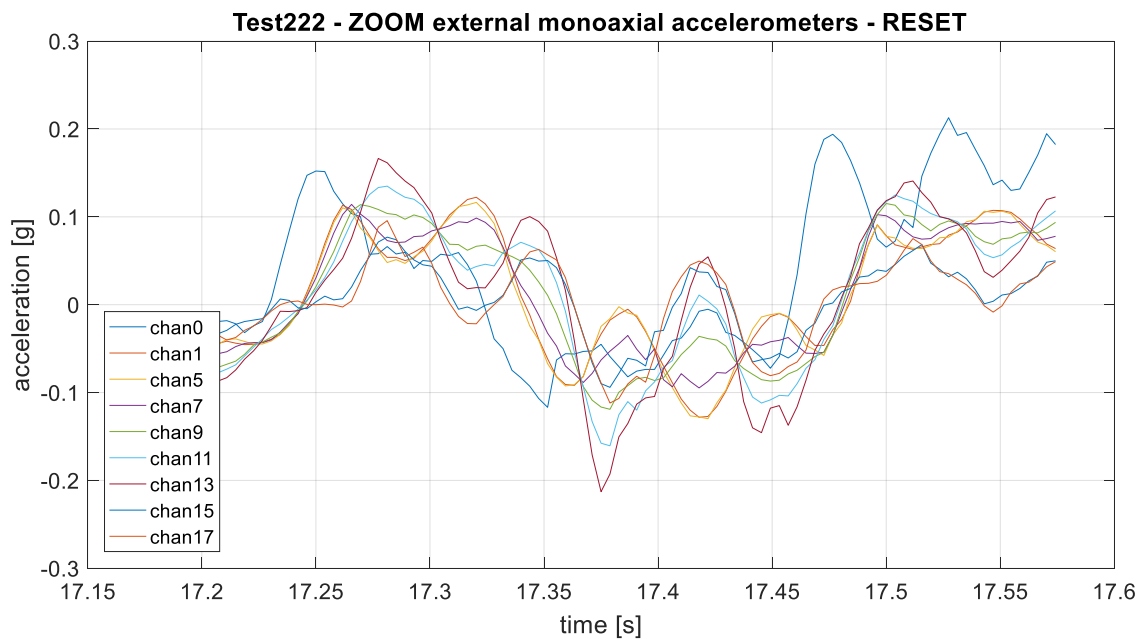
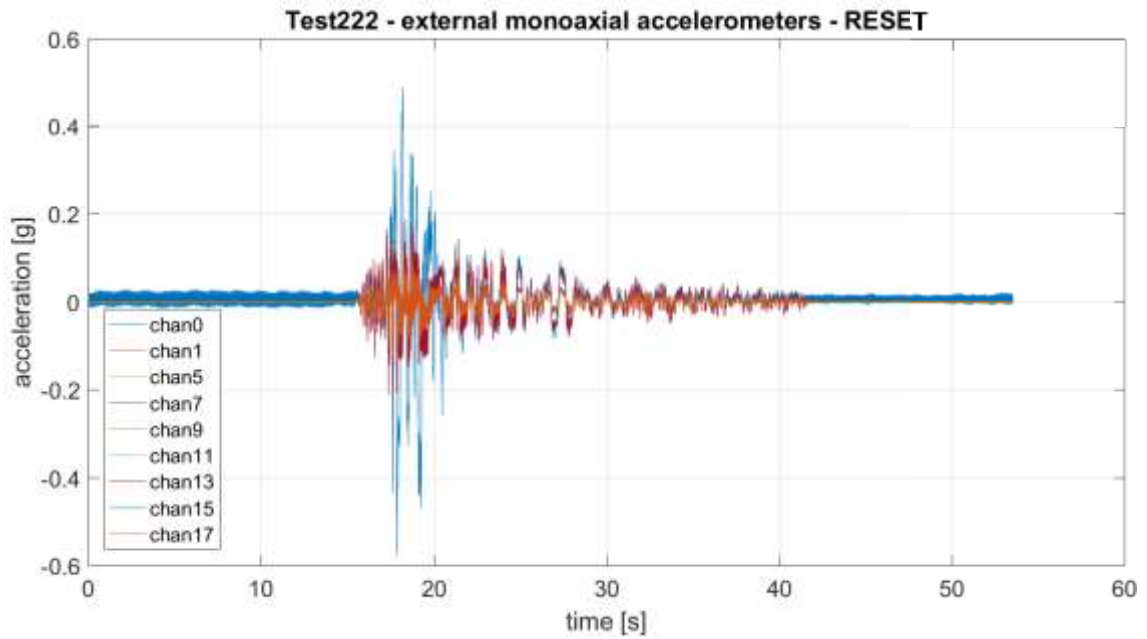
Earthquake input RS3 0.1 g: Test 205



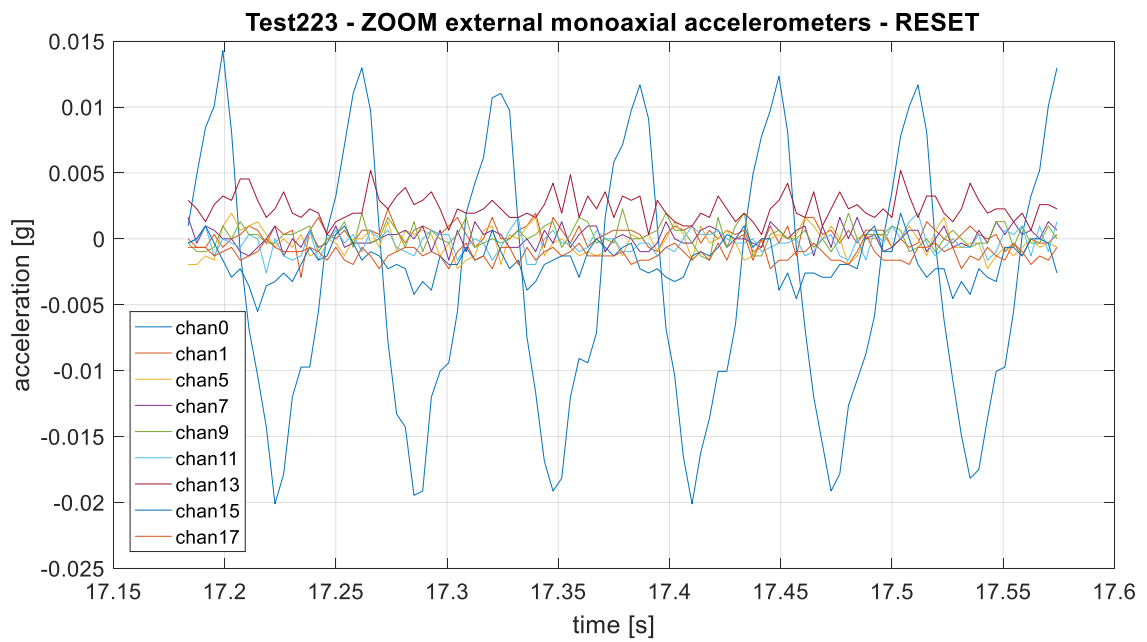
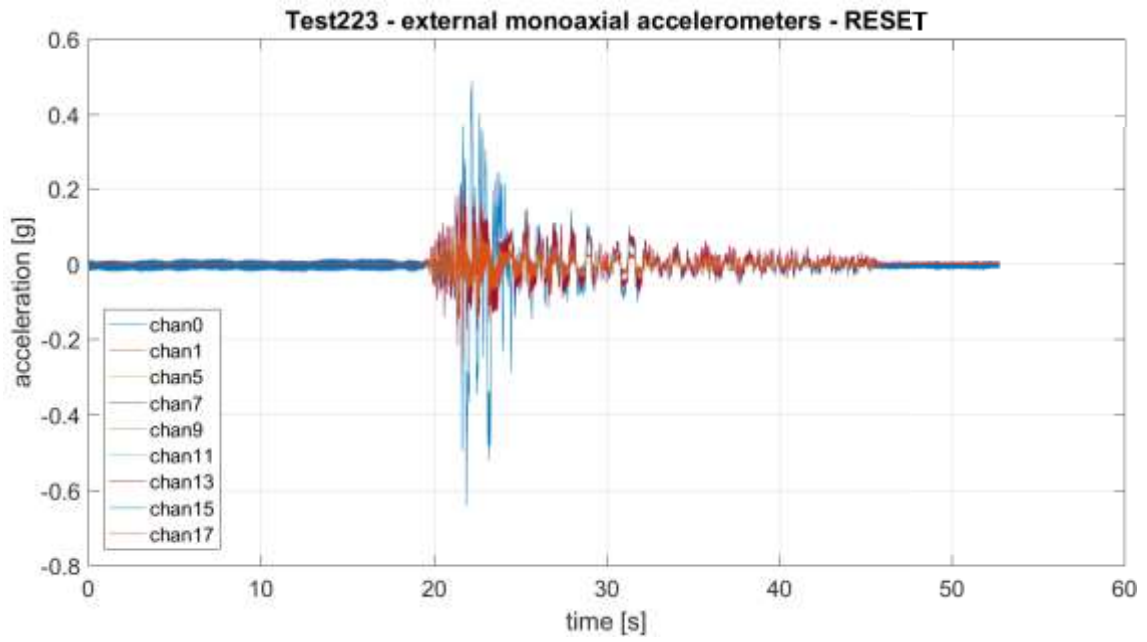
Earthquake input RS3 0.3 g: Test 215



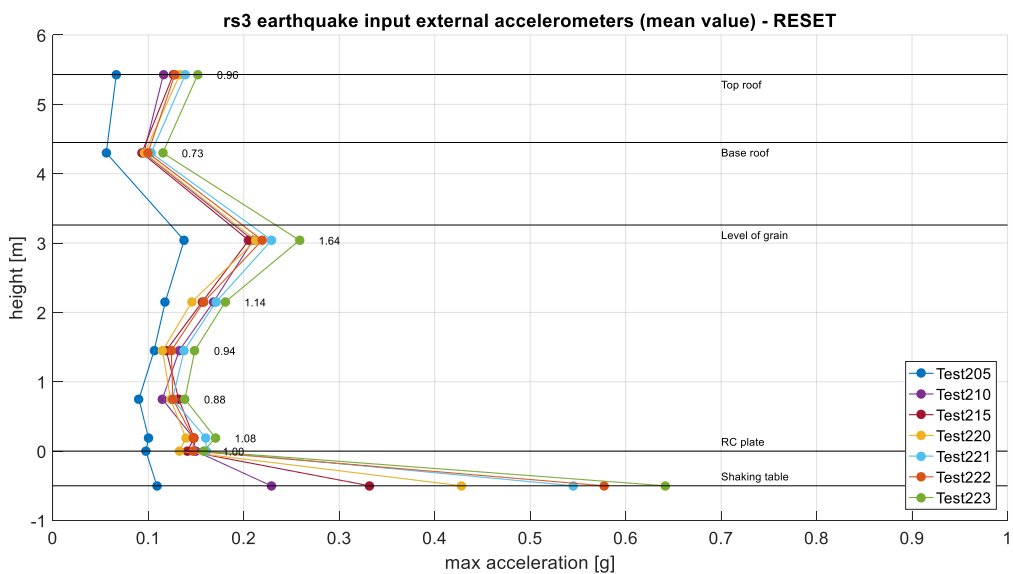
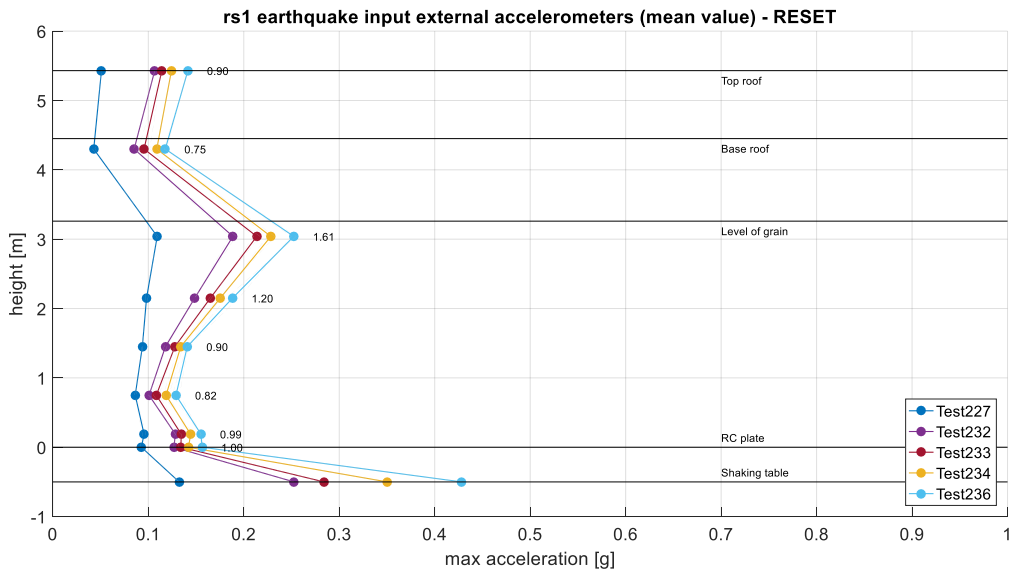
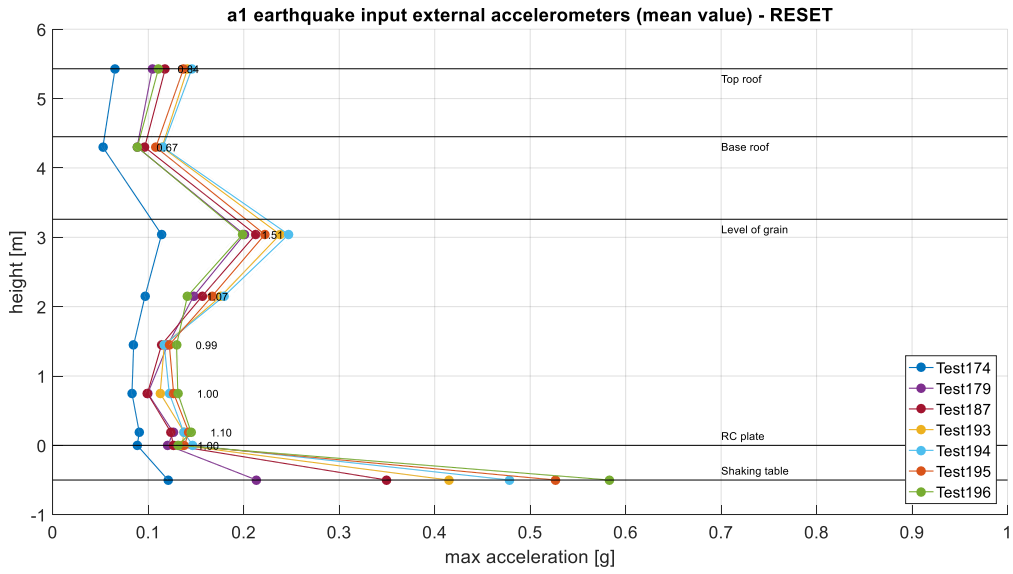
Earthquake input RS3 0.5 g: Test 222



Earthquake input RS3 0.55 g: Test 223



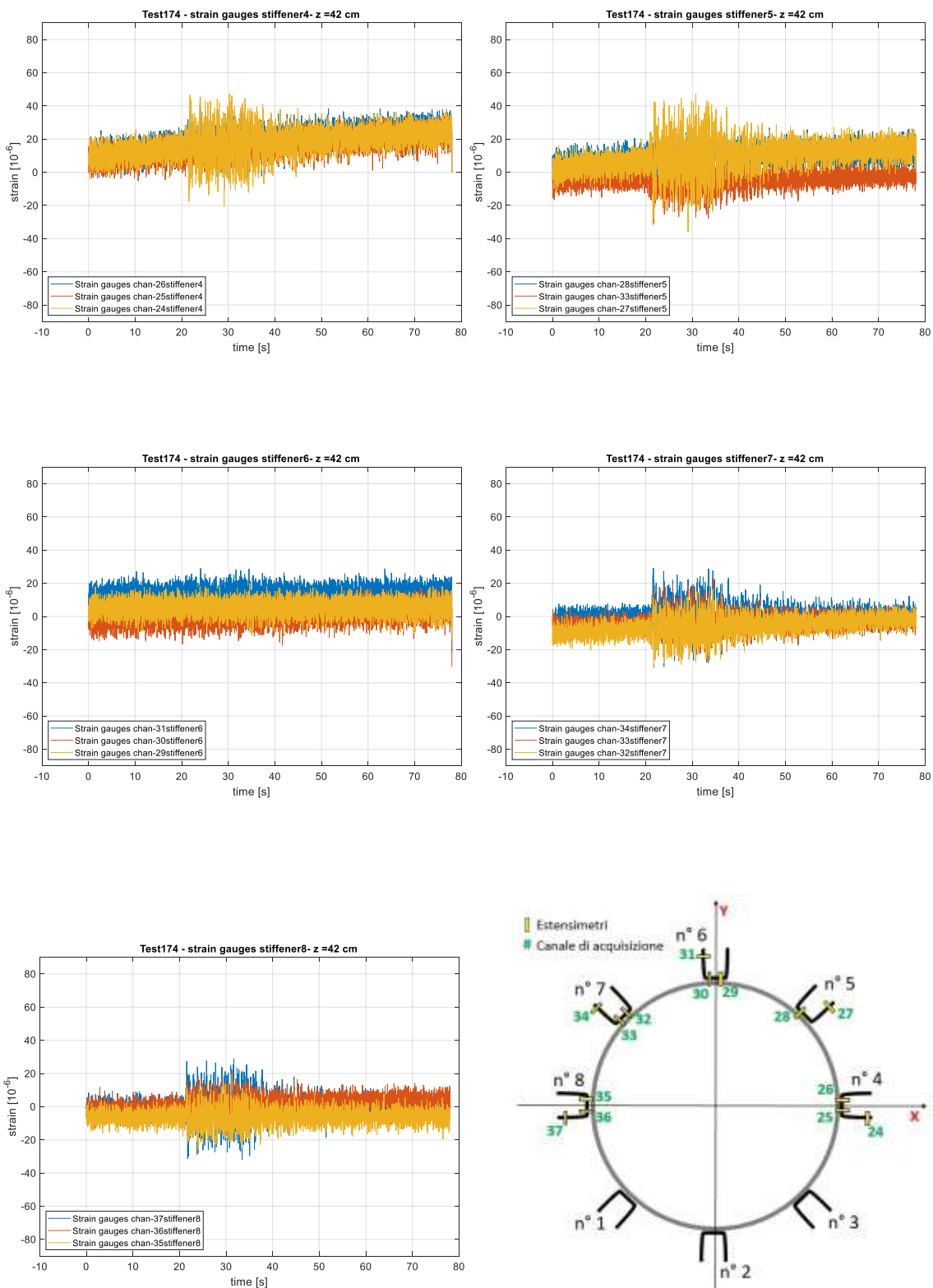
A. 6.3 Amplificazioni dinamiche



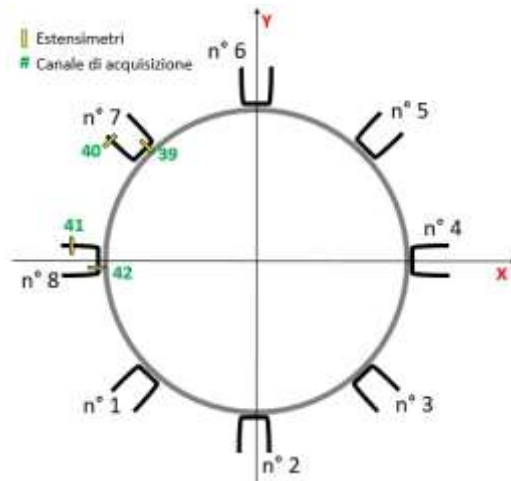
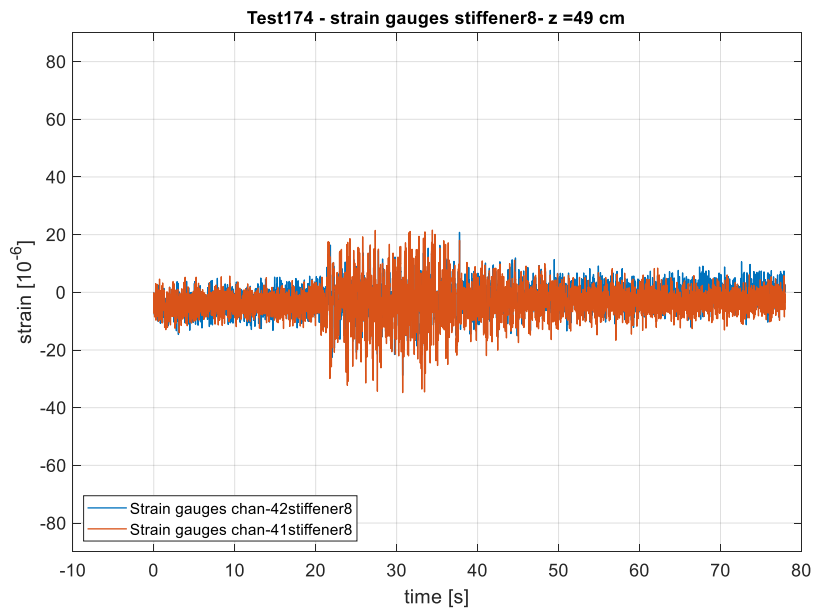
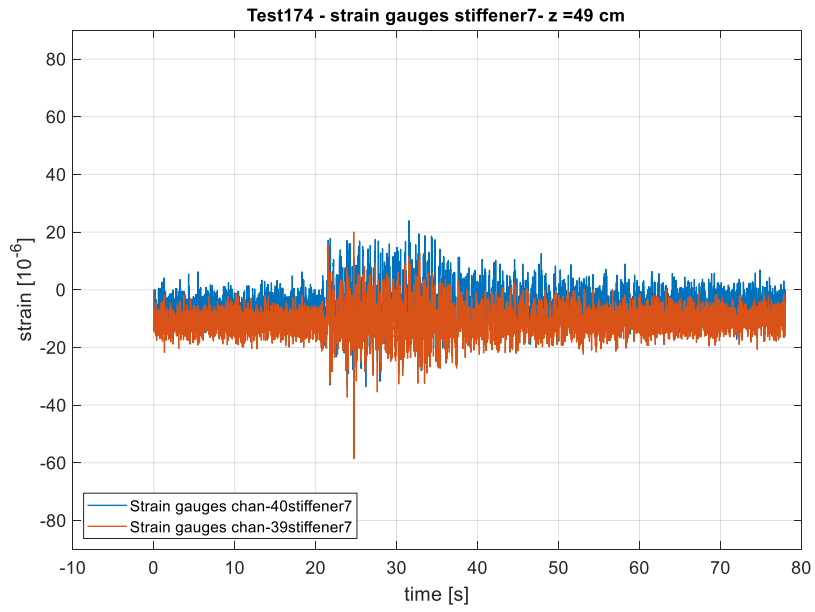
A. 6.4 Estensimetri

Earthquake input A1 0.1 g: Test 174

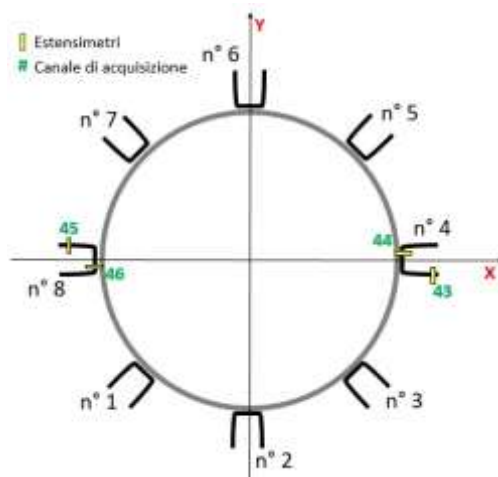
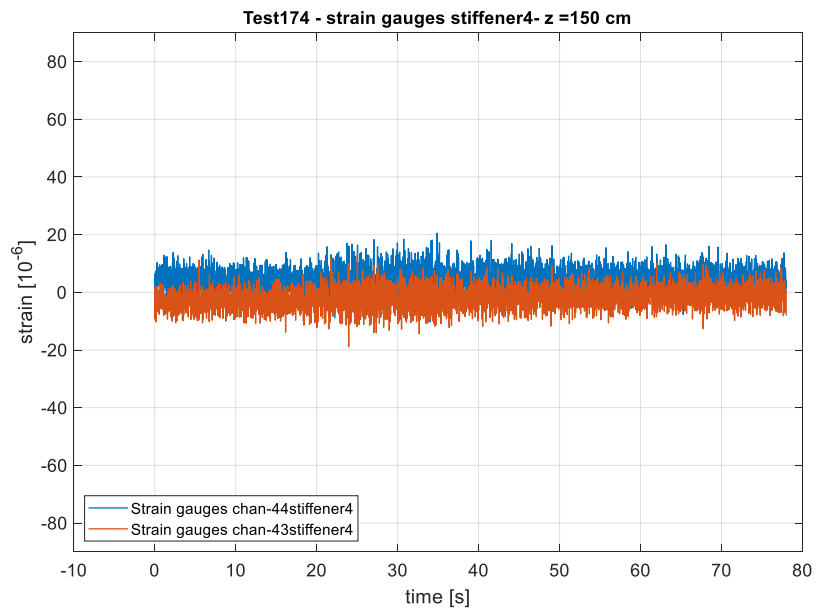
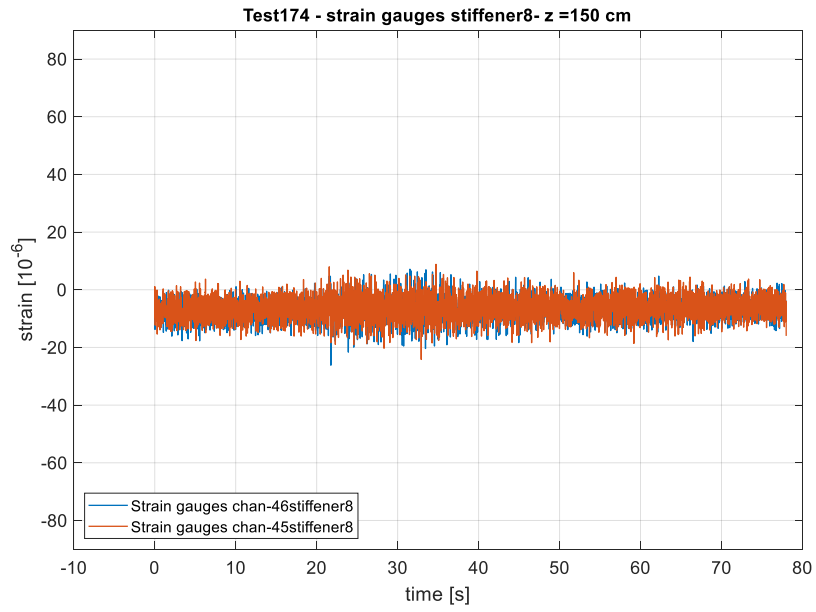
Quota Z = 42 cm



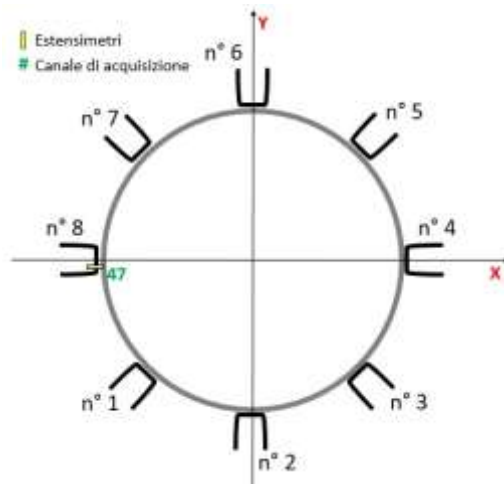
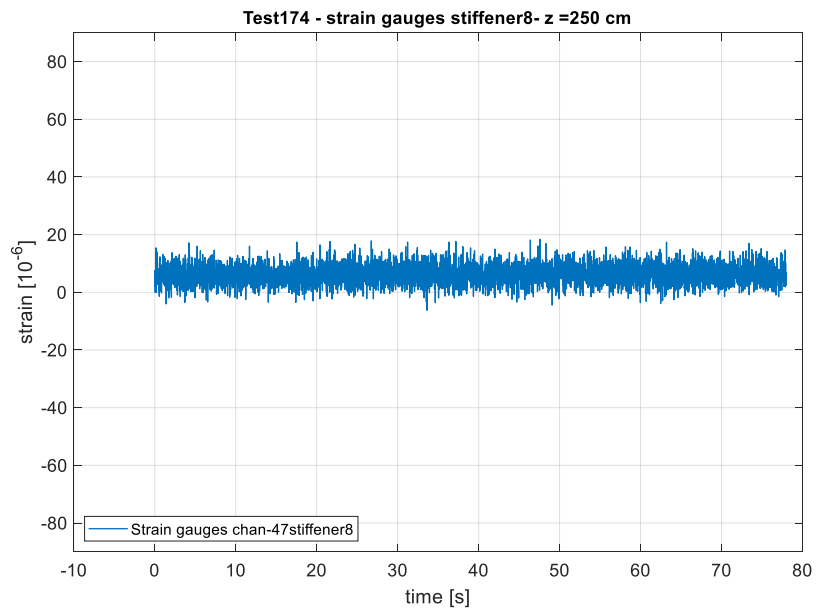
Quota Z = 49 cm



Quota Z = 150 cm

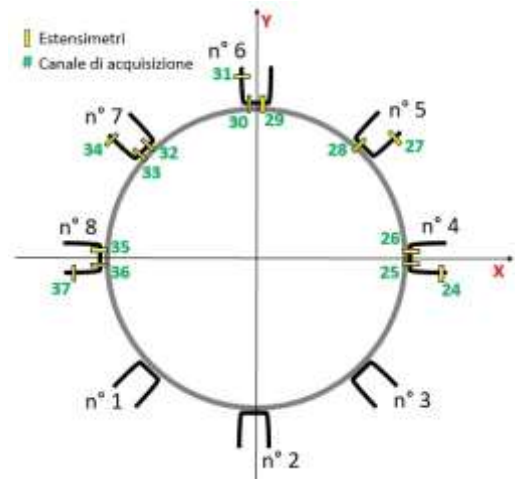
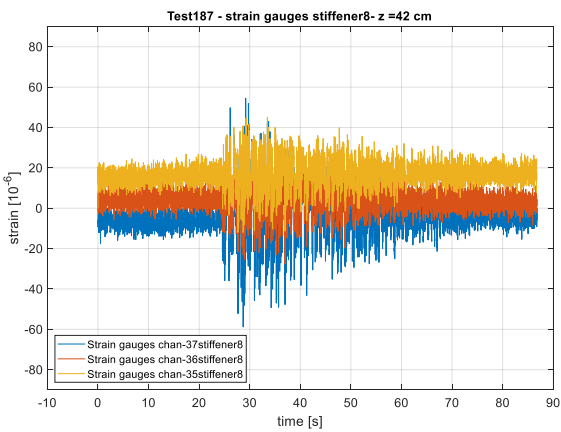
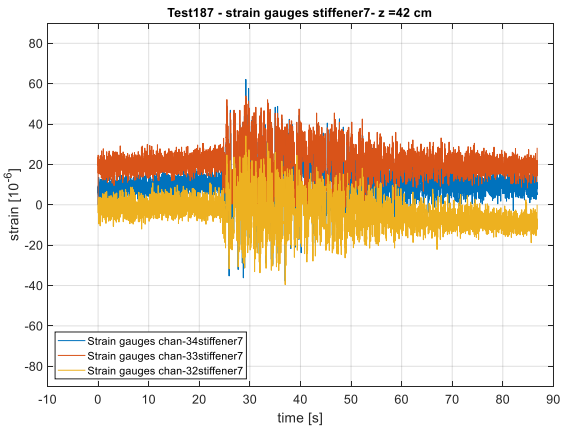
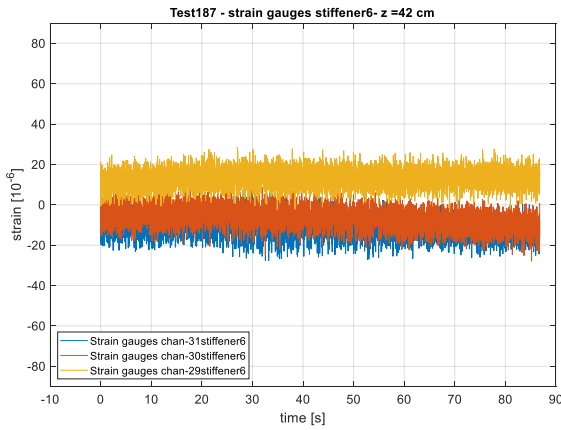
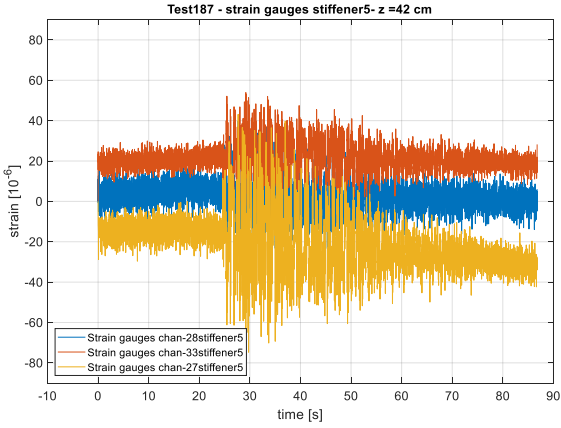
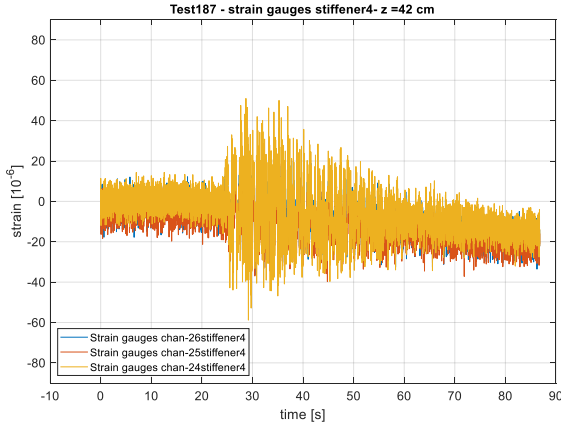


Quota Z = 250 cm

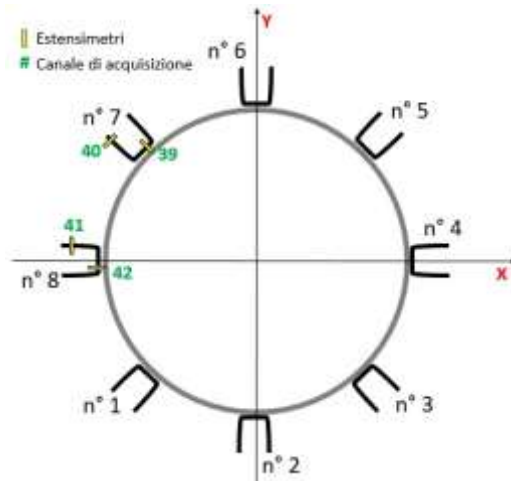
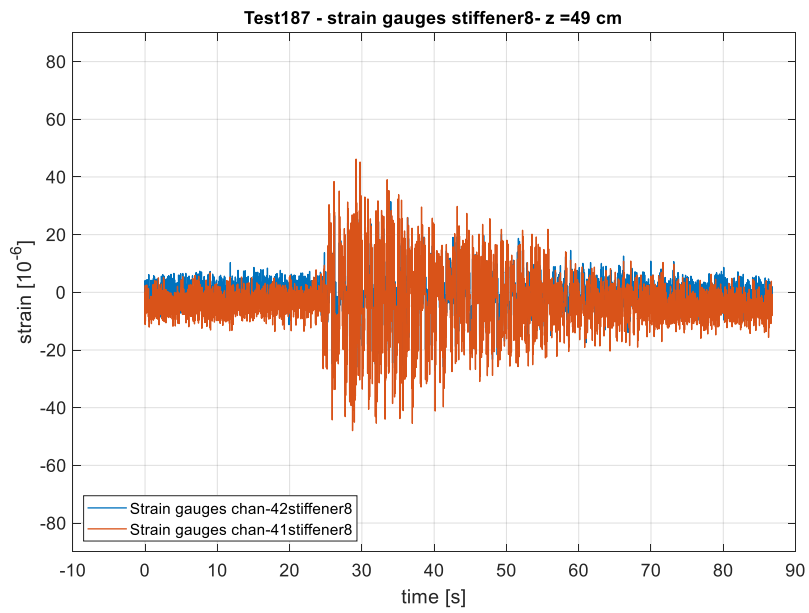
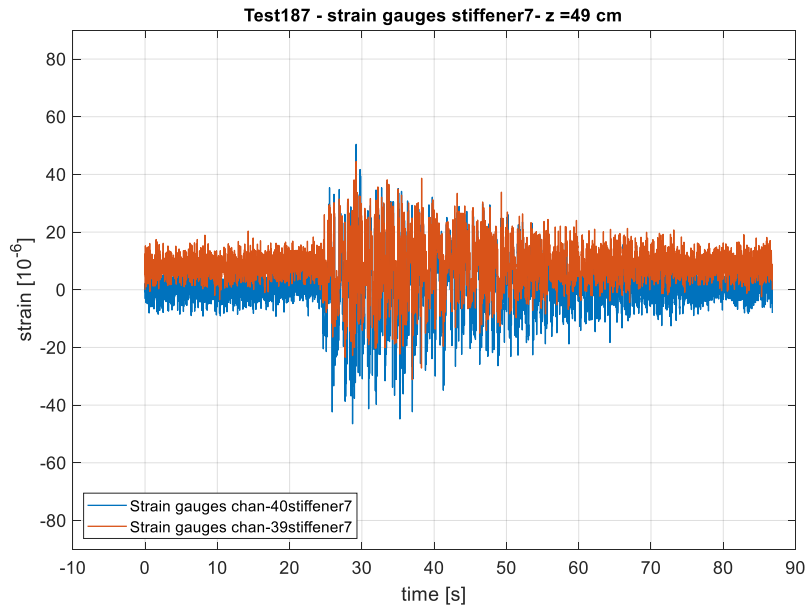


Earthquake input A1 0.3 g: Test 187

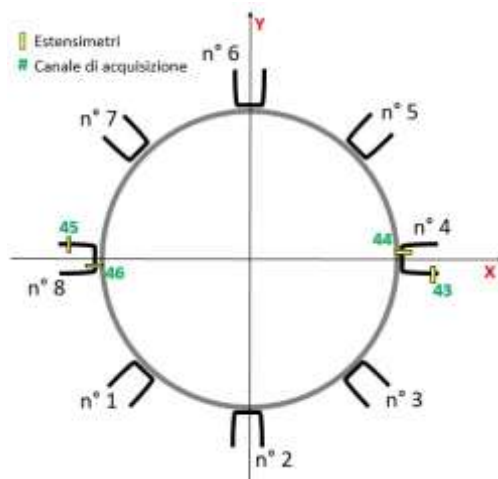
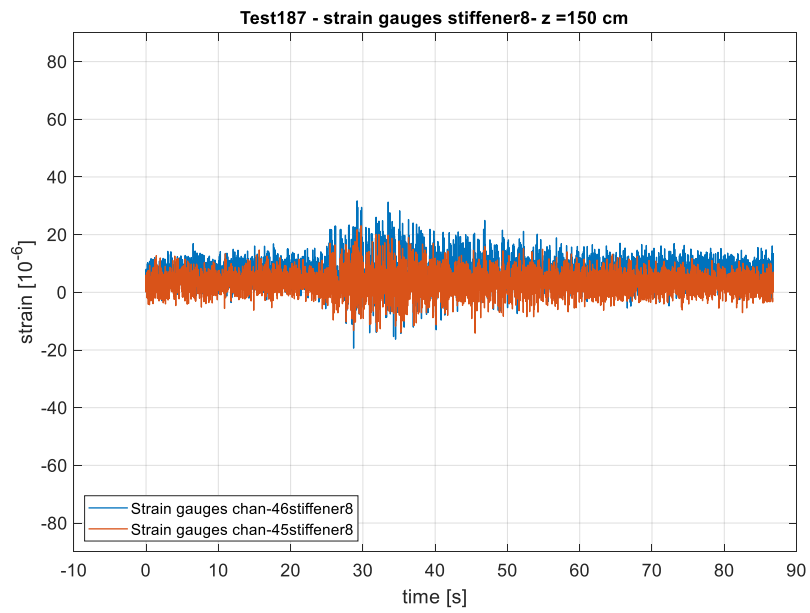
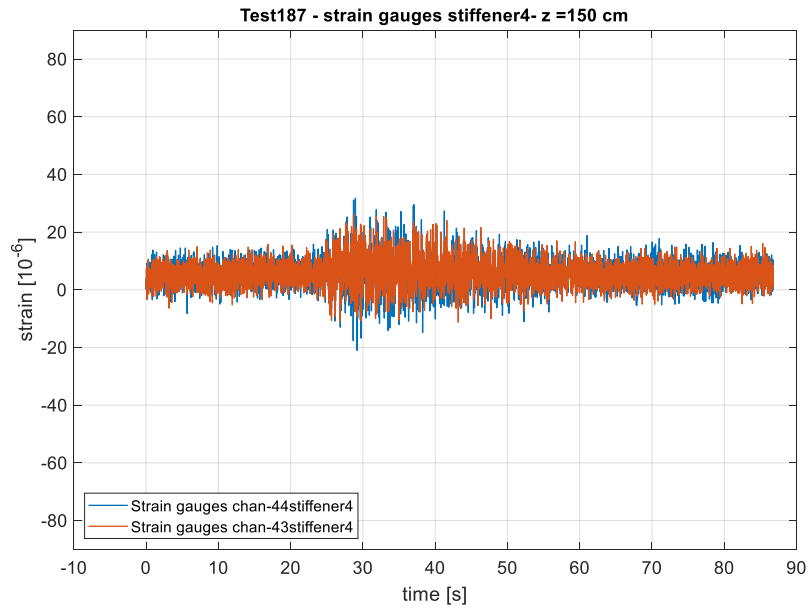
Quota Z = 42 cm



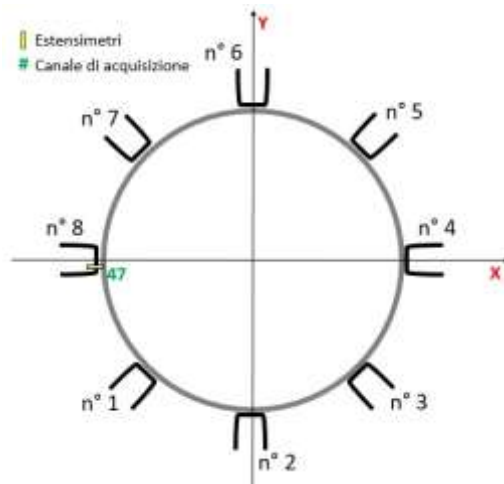
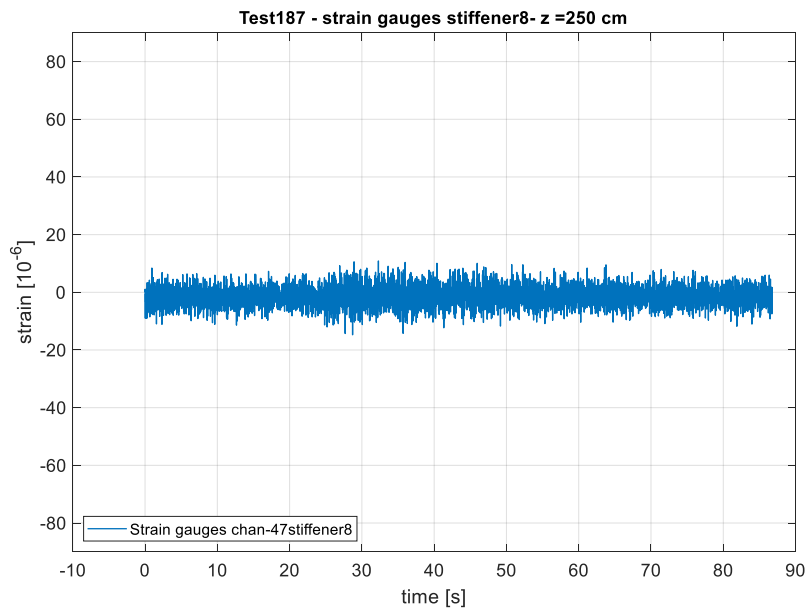
Quota Z = 49 cm



Quota Z = 150 cm

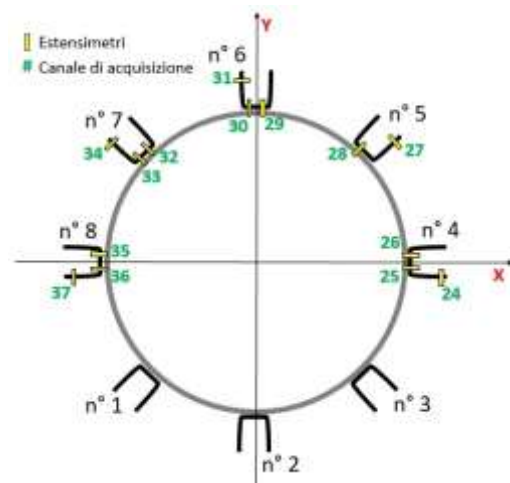
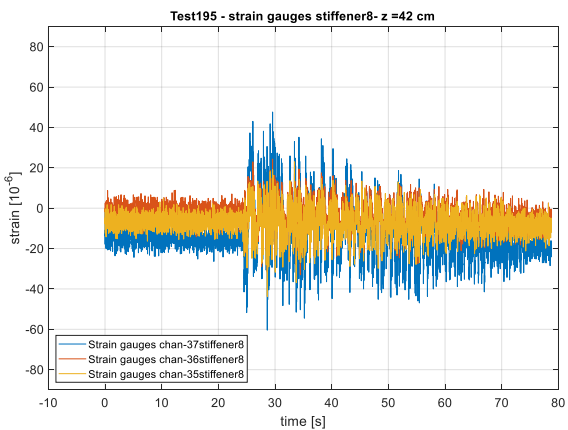
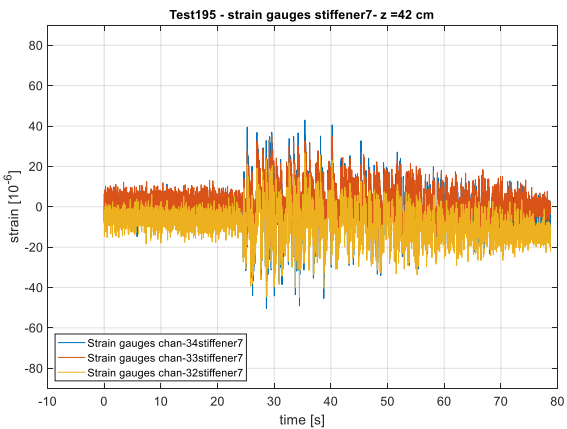
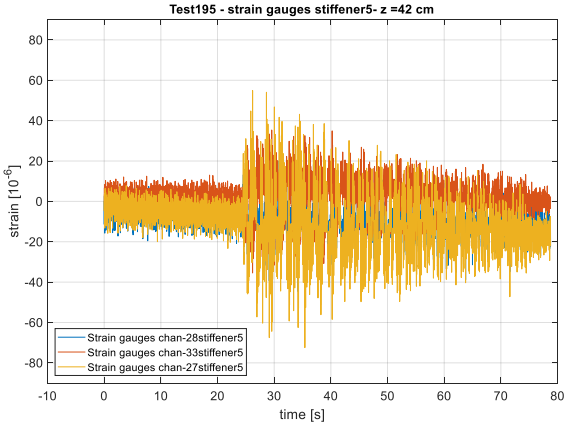
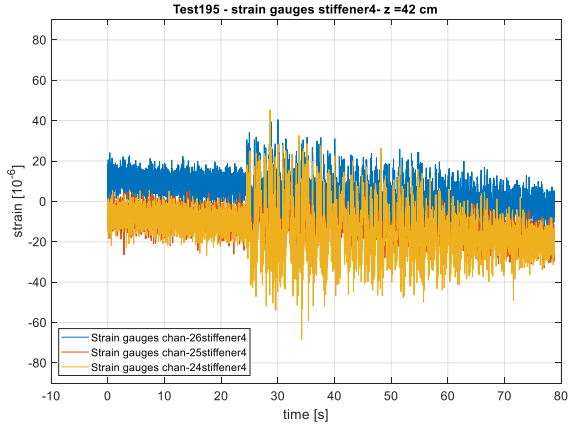


Quota Z = 250 cm

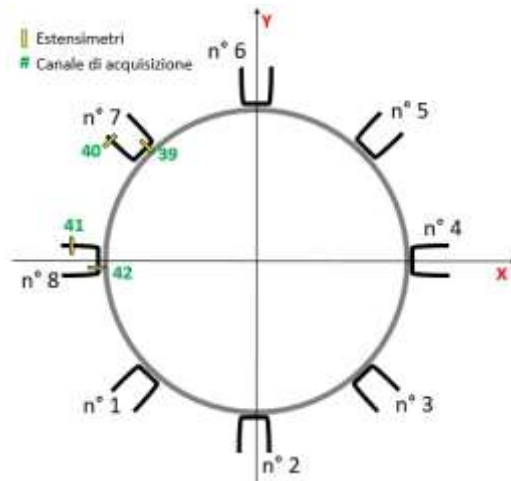
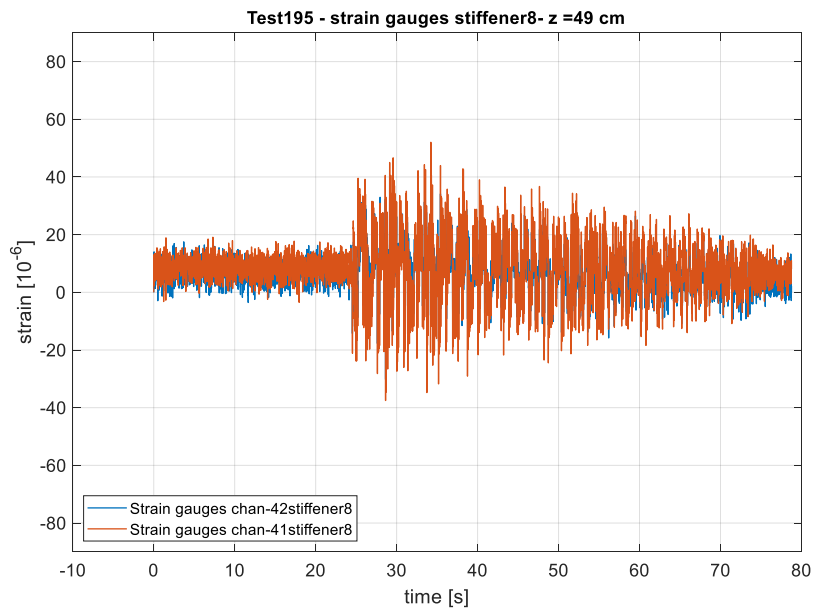
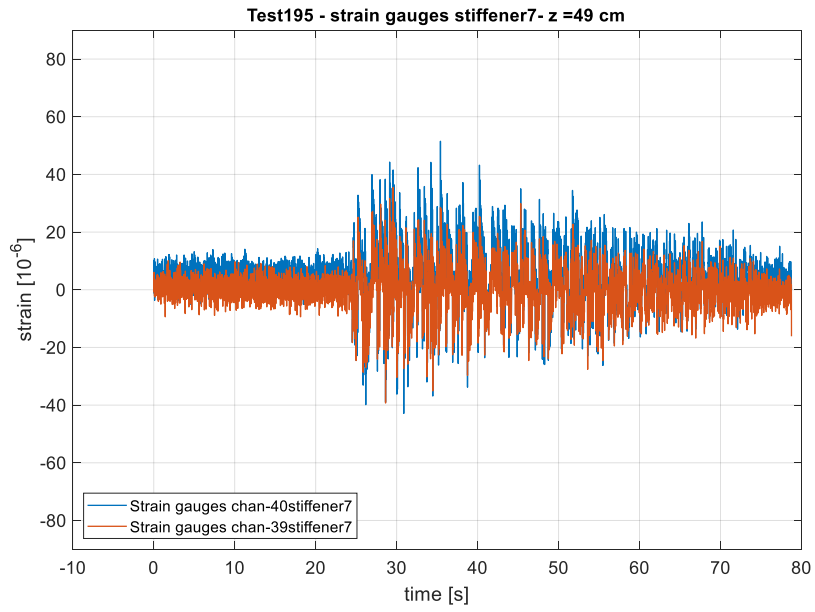


Earthquake input A1 0.5 g: Test 195

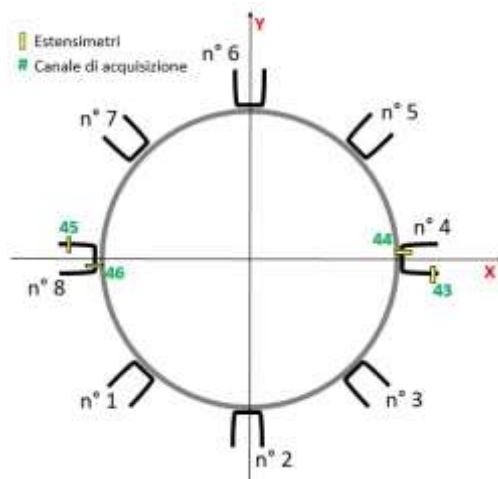
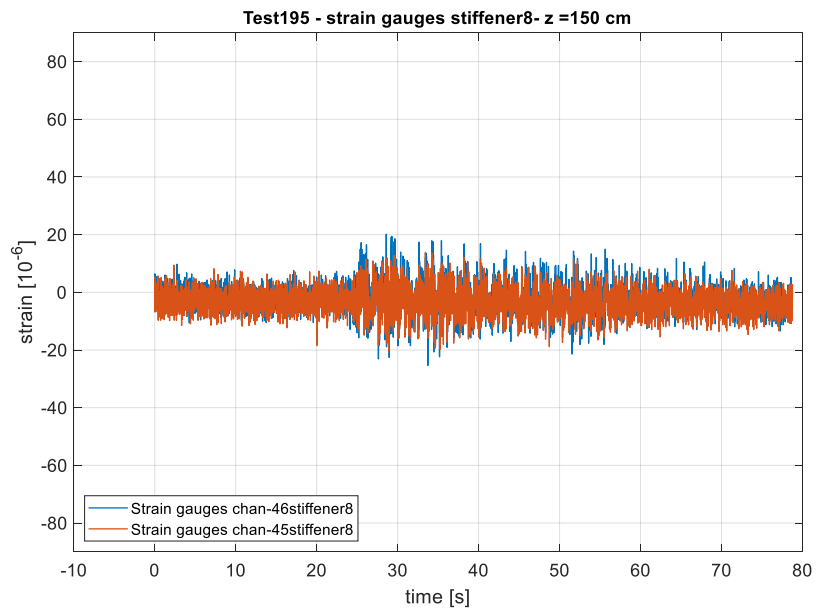
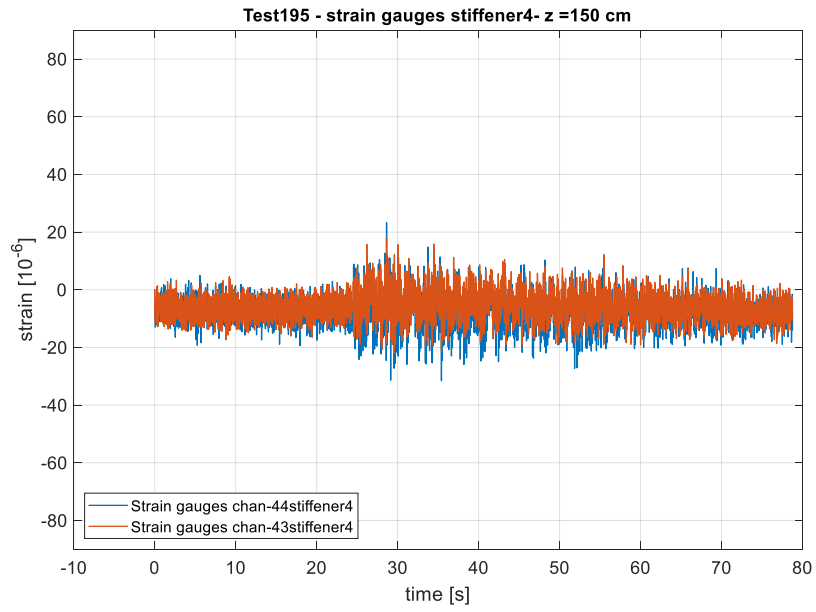
Quota Z = 42 cm



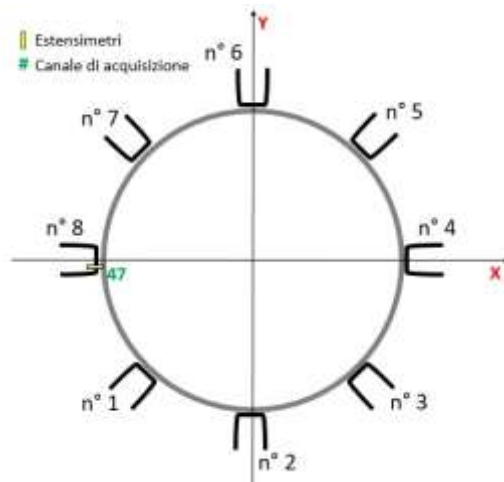
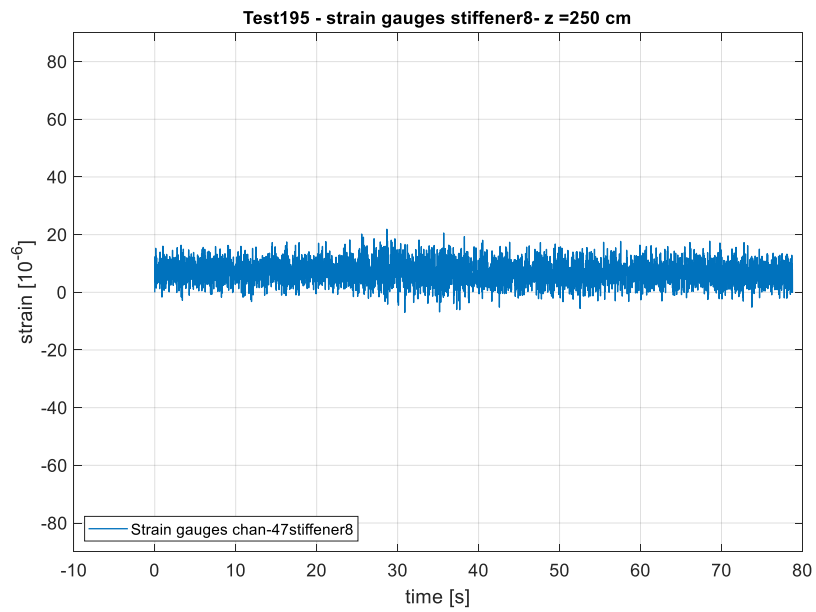
Quota Z = 49 cm



Quota Z = 150 cm

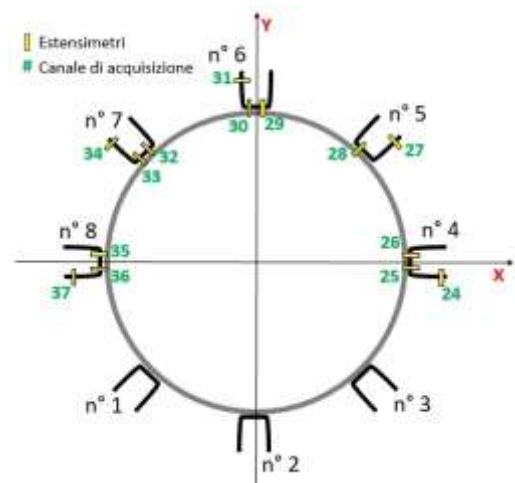
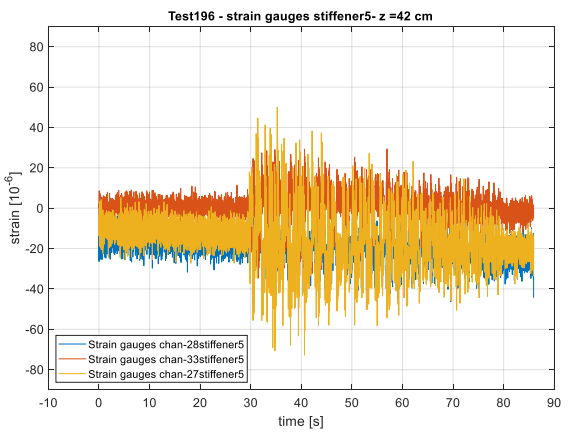
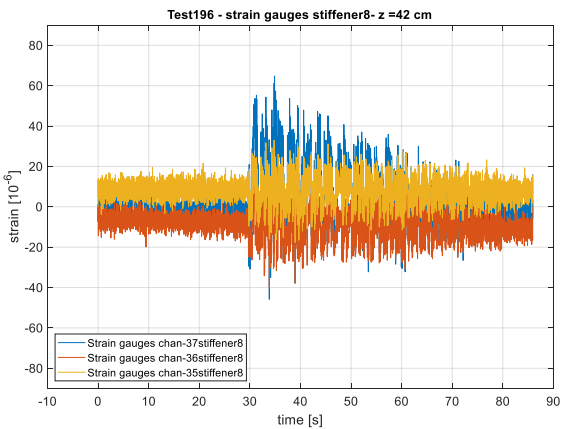
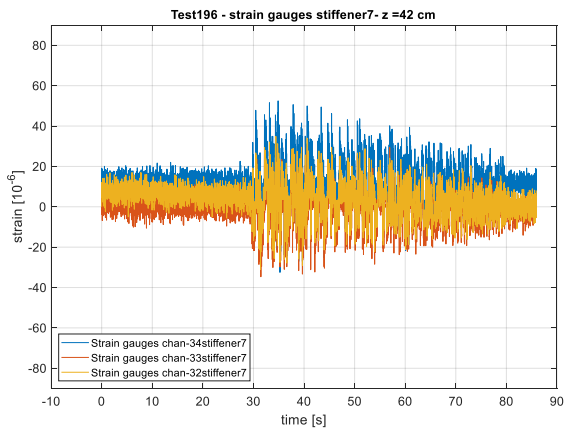
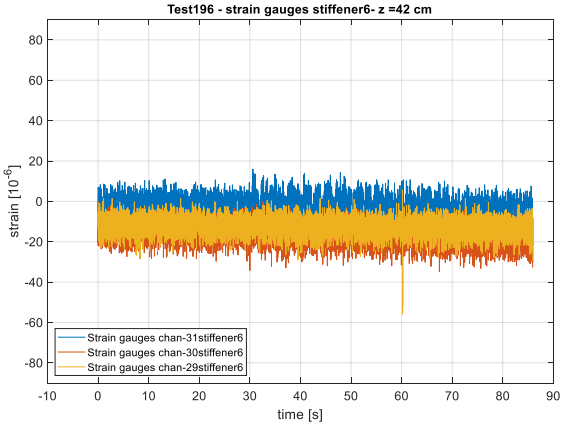
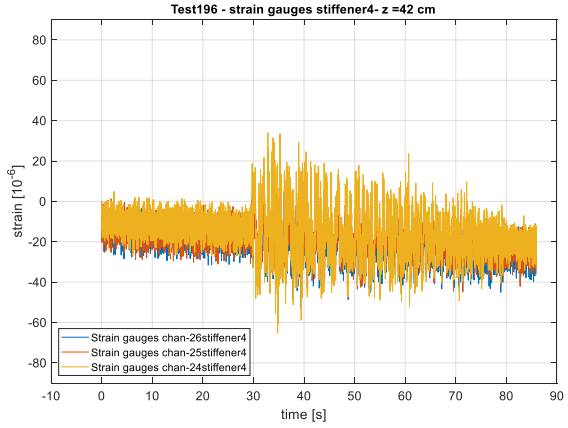


Quota Z = 250 cm

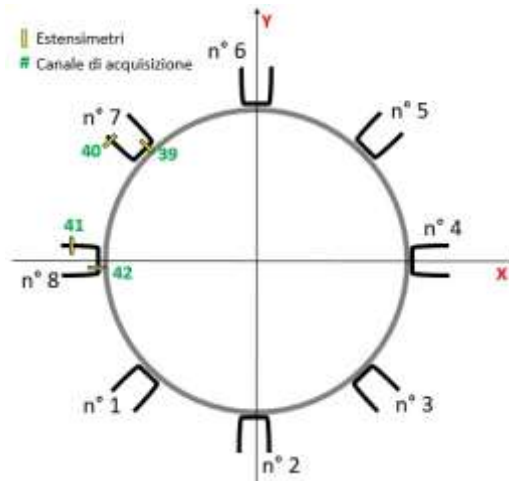
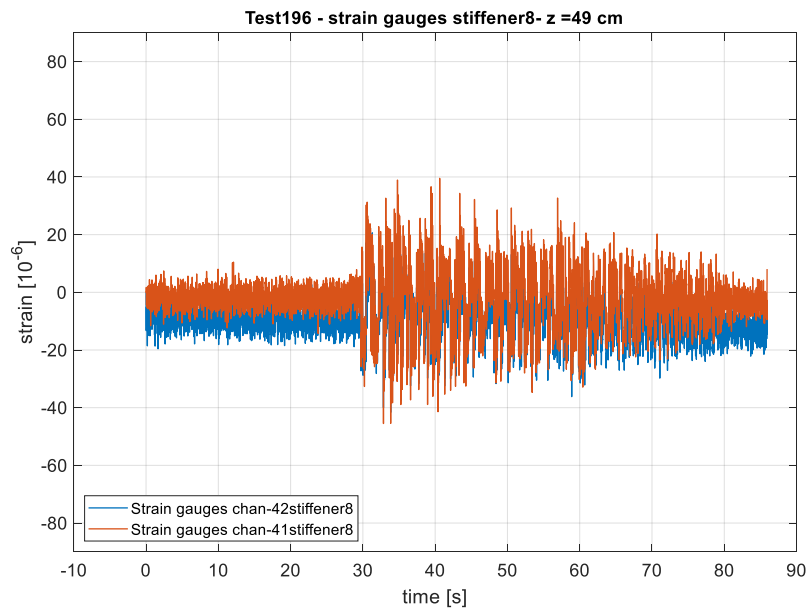
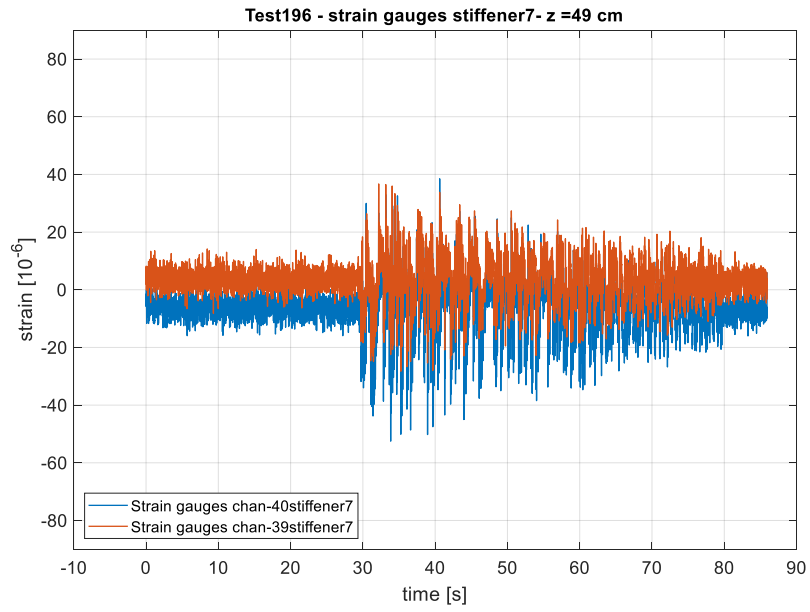


Earthquake input A1 0.55 g: Test 196

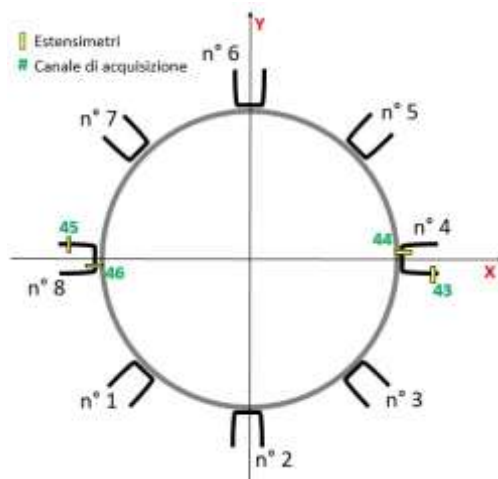
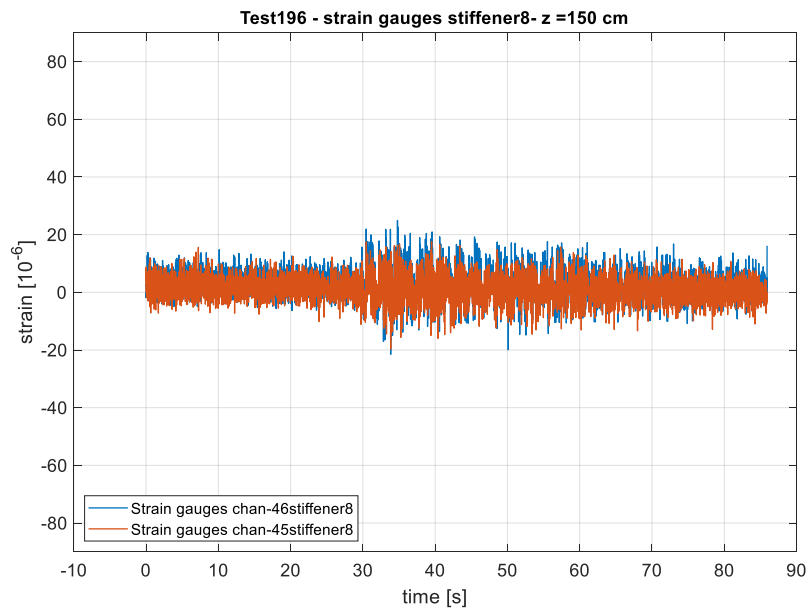
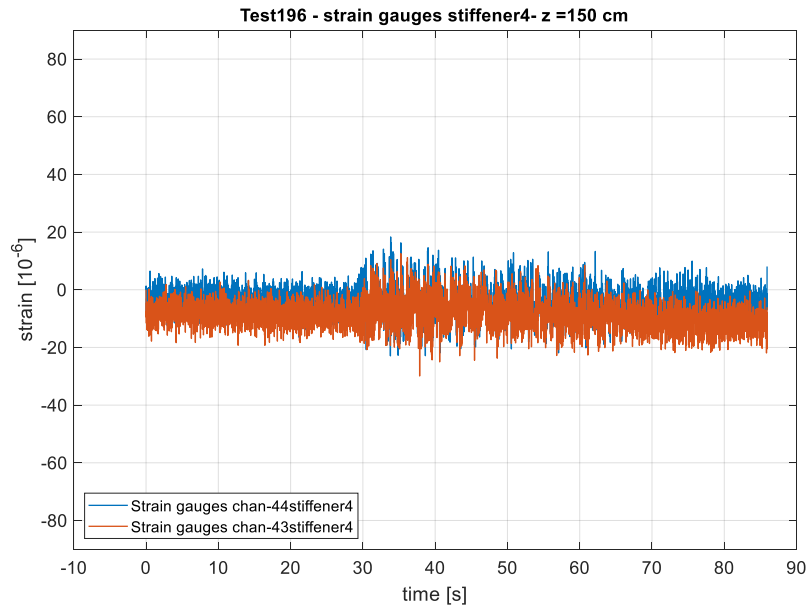
Quota Z = 42 cm



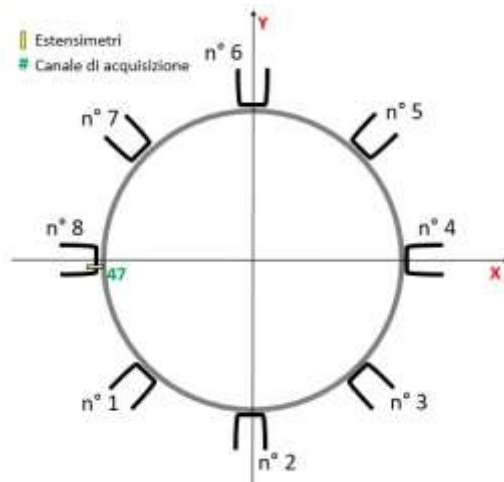
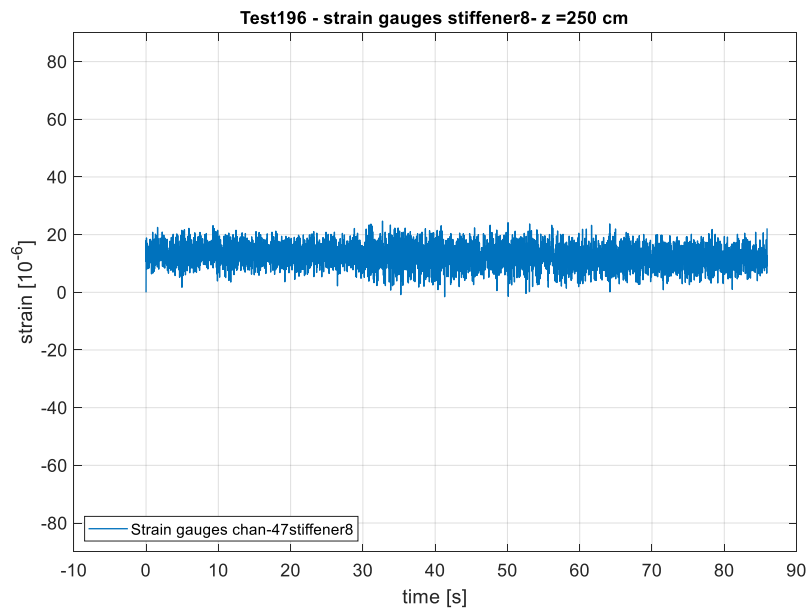
Quota Z = 49 cm



Quota Z = 150 cm

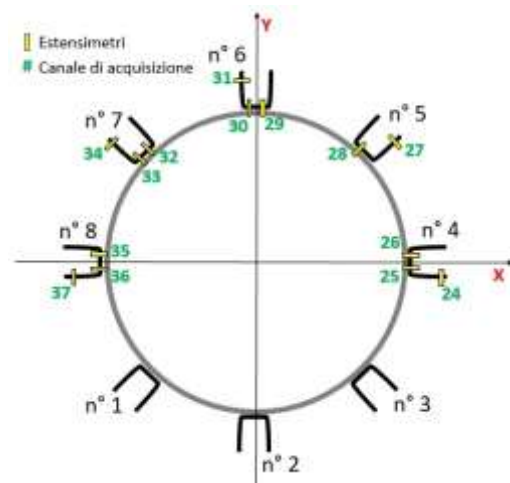
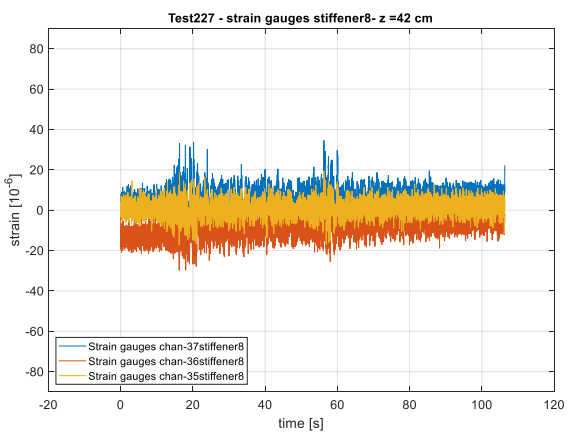
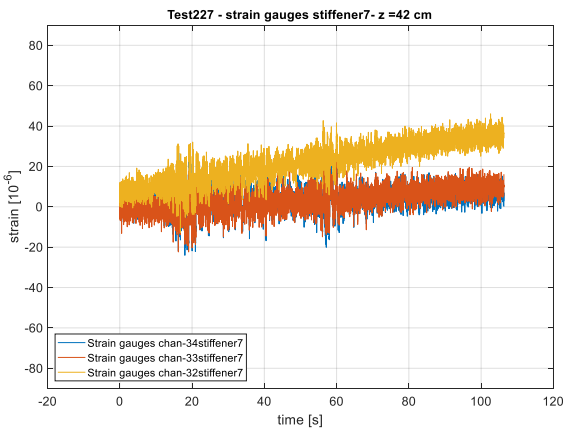
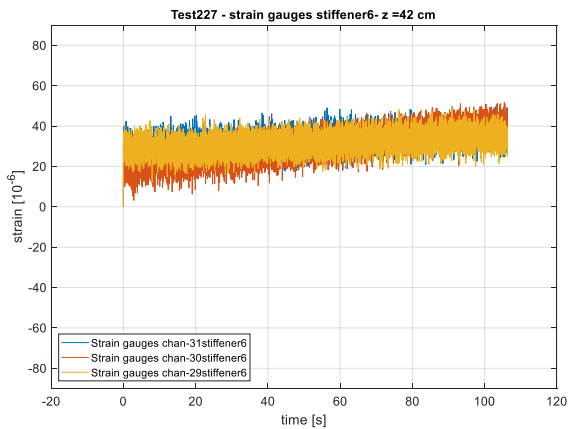
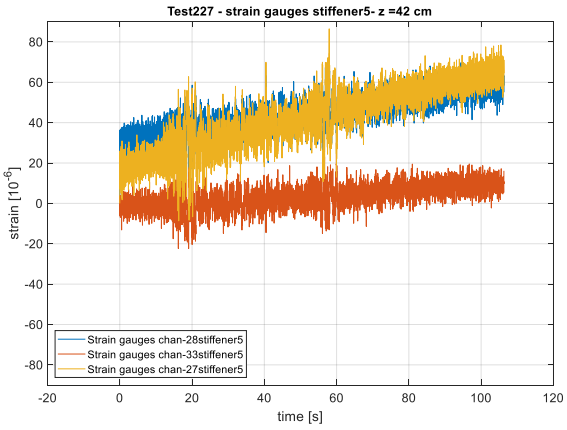
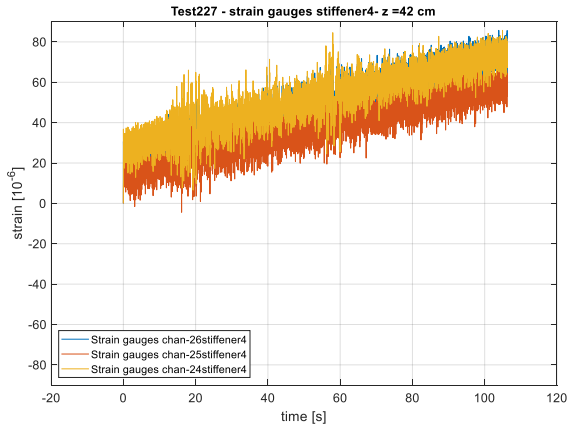


Quota Z = 250 cm

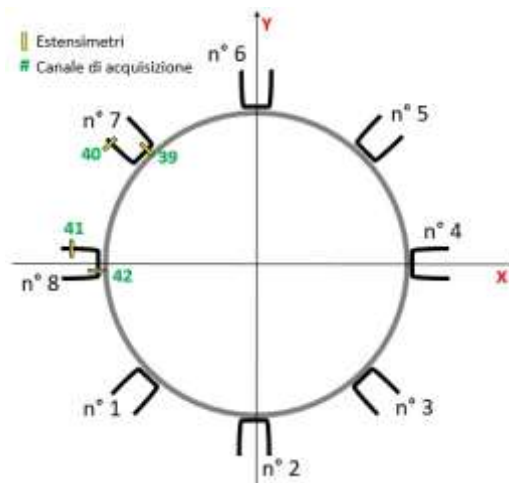
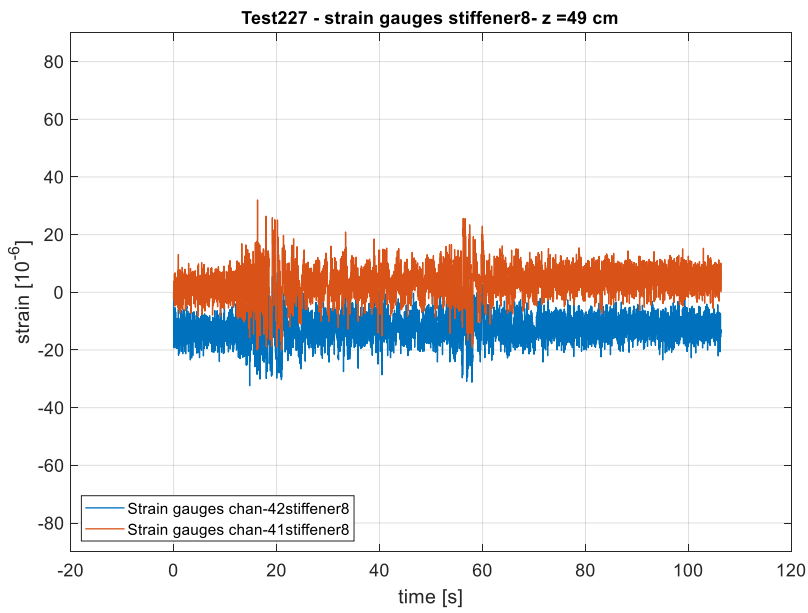
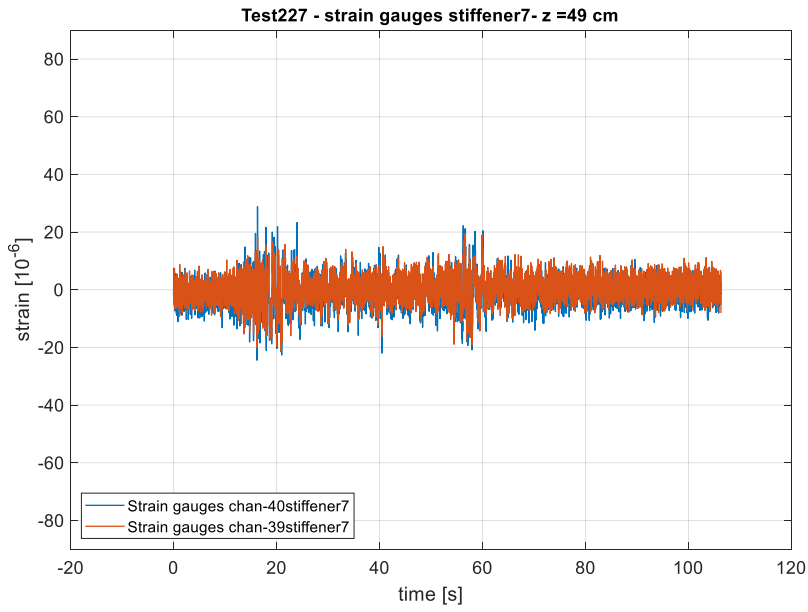


Earthquake input RS1 0.1 g: Test 227

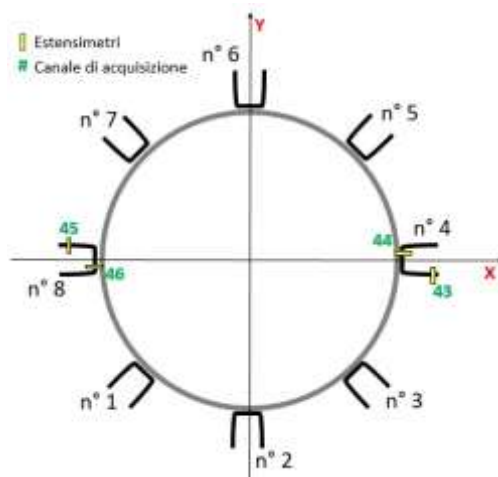
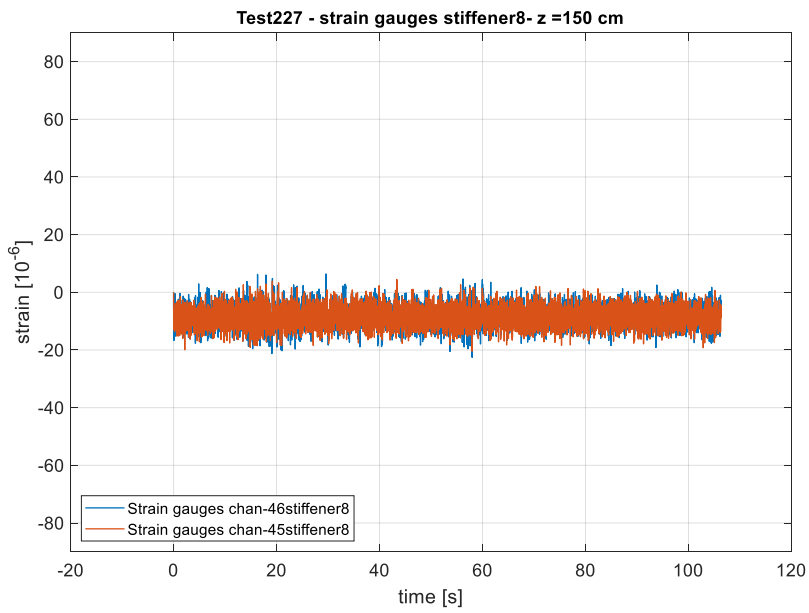
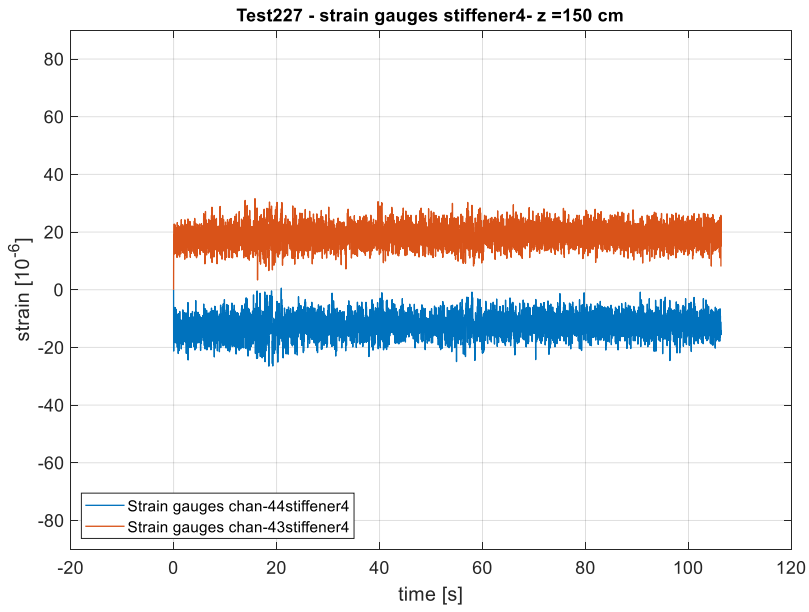
Quota Z = 42 cm



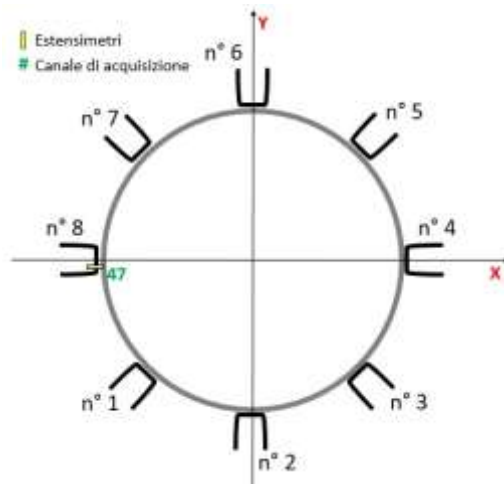
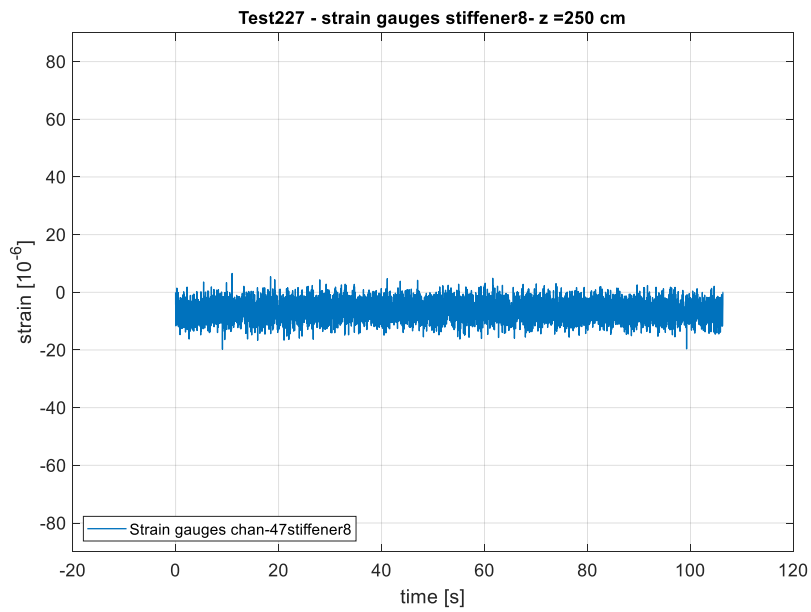
Quota Z = 49 cm



Quota Z = 150 cm

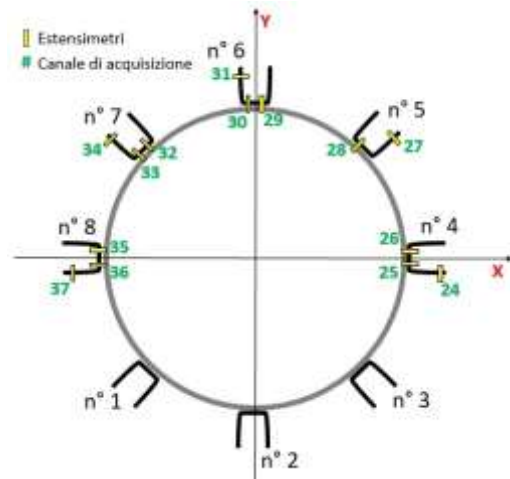
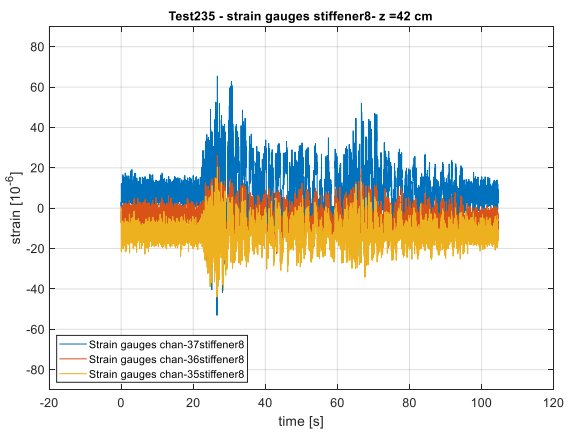
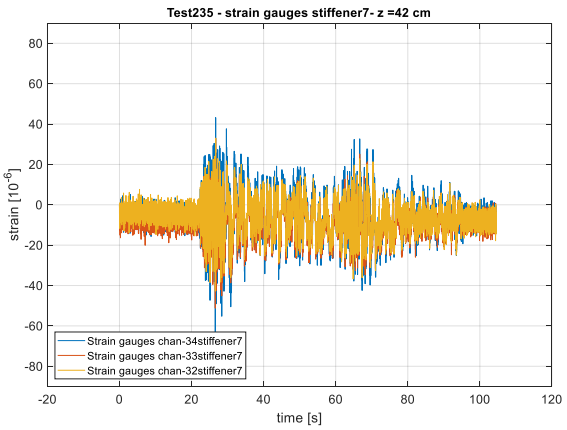
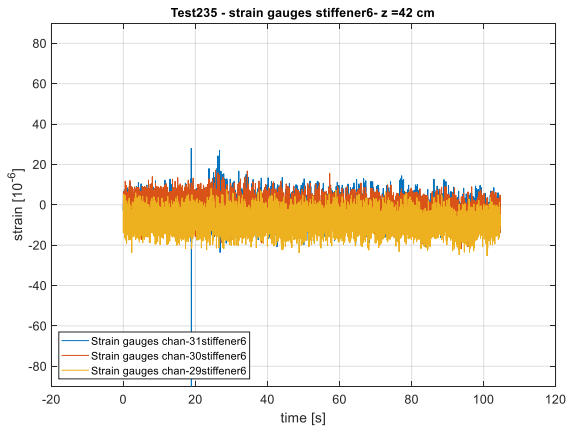
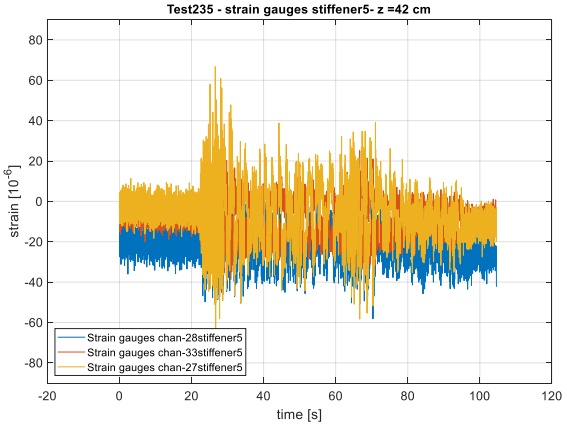
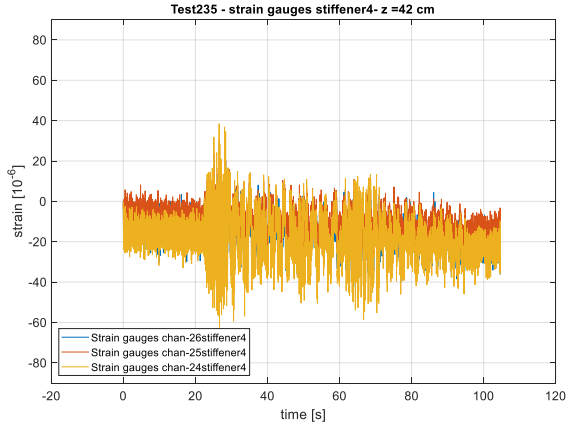


Quota Z = 250 cm

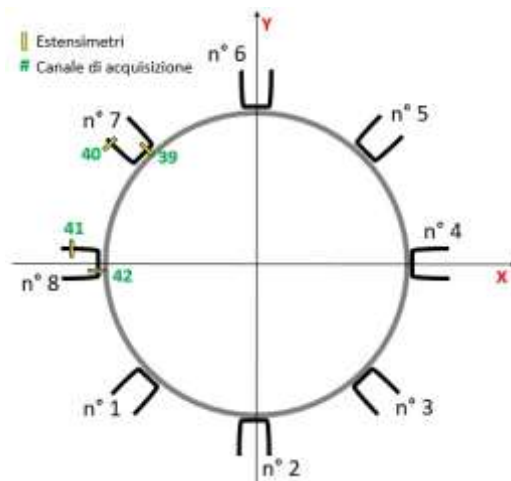
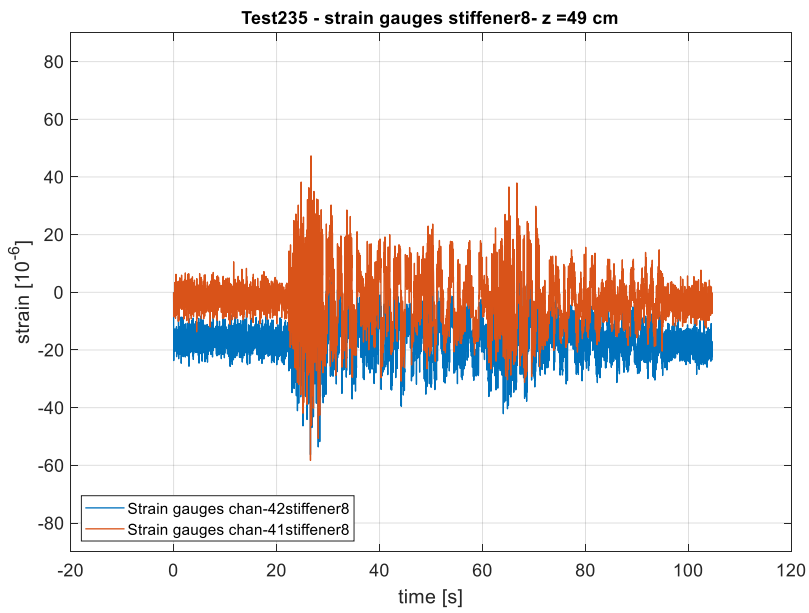
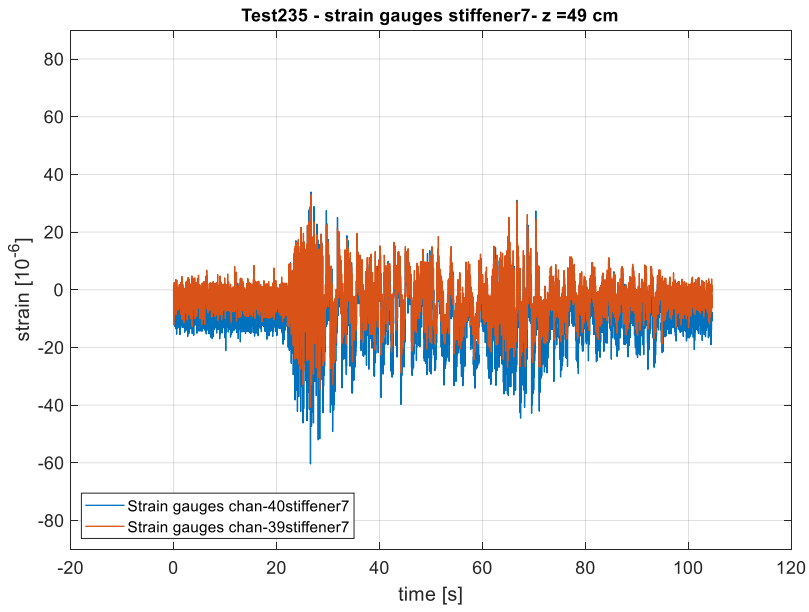


Earthquake input RS1 0.3 g: Test 235

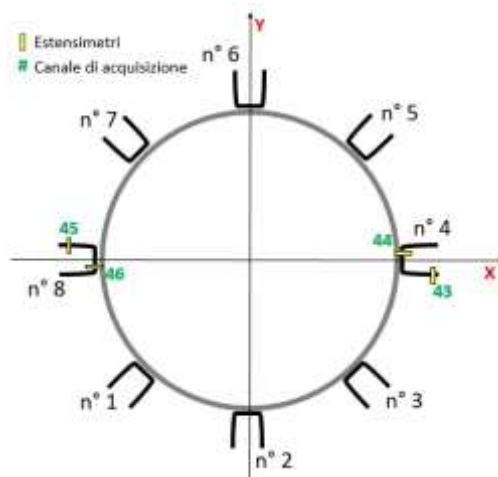
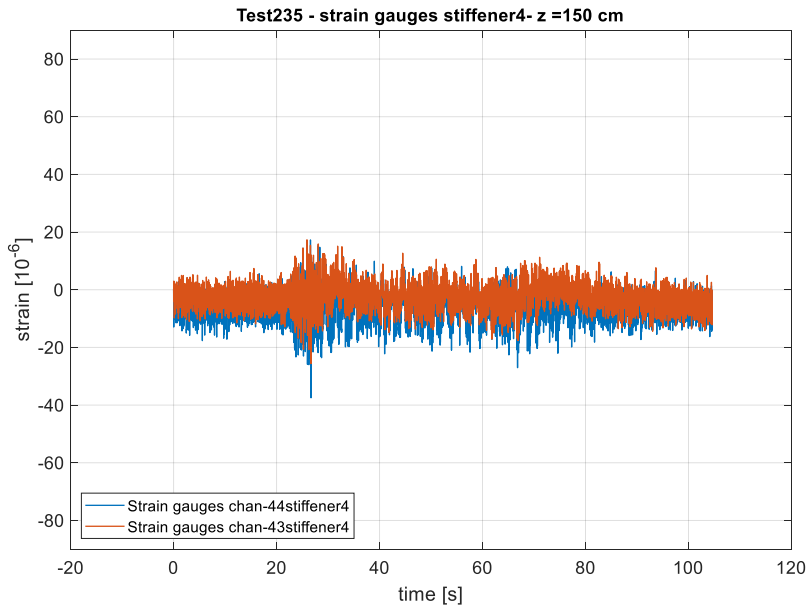
Quota Z = 42 cm



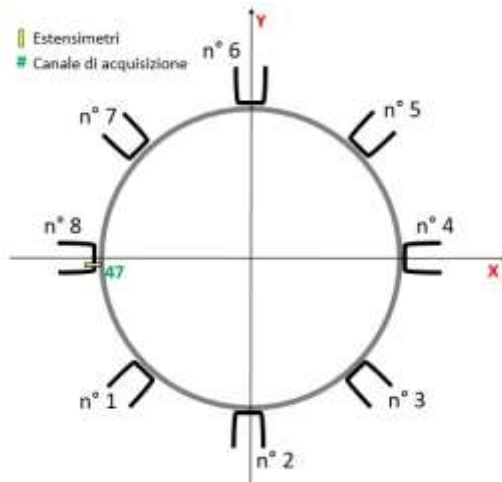
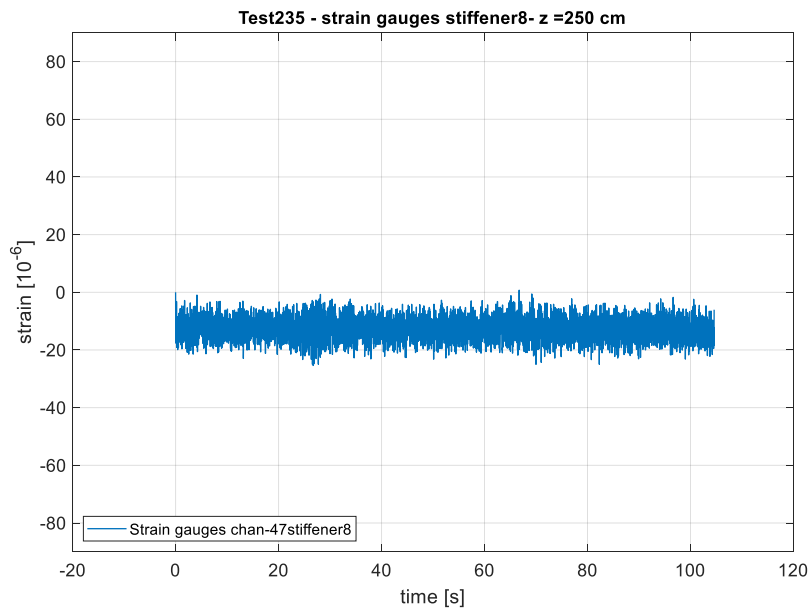
Quota Z = 49 cm



Quota Z = 150 cm

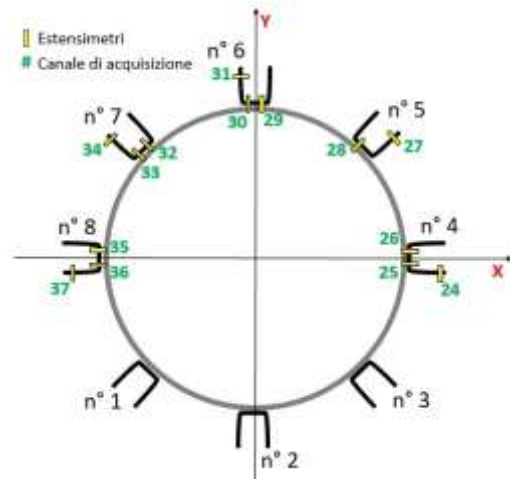
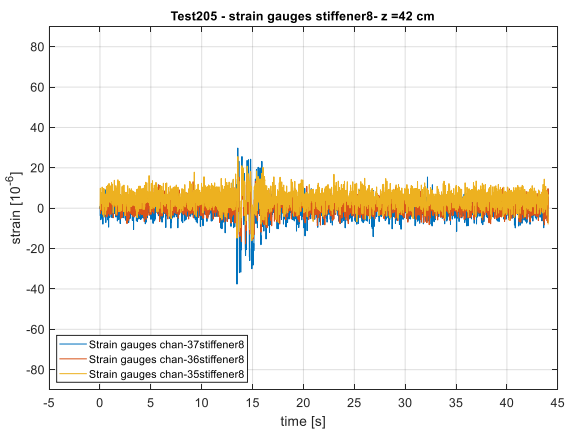
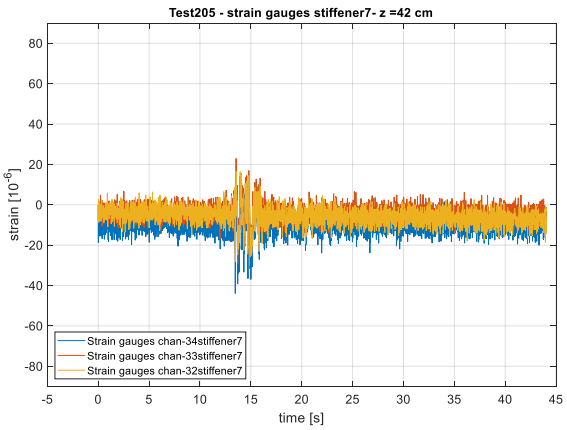
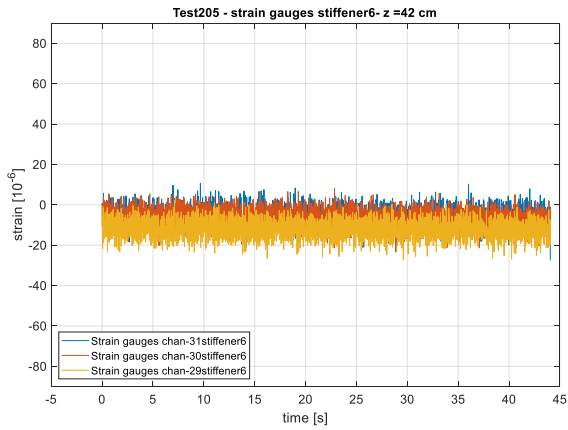
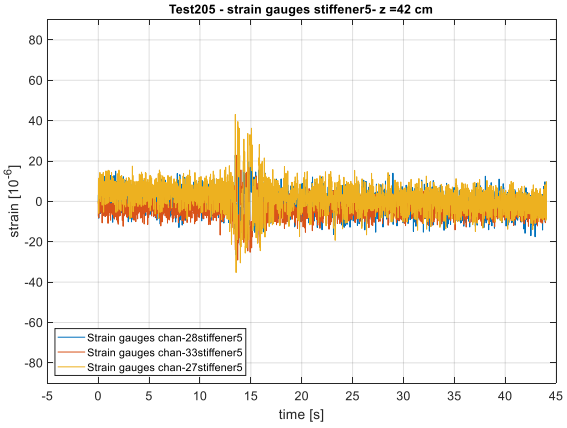
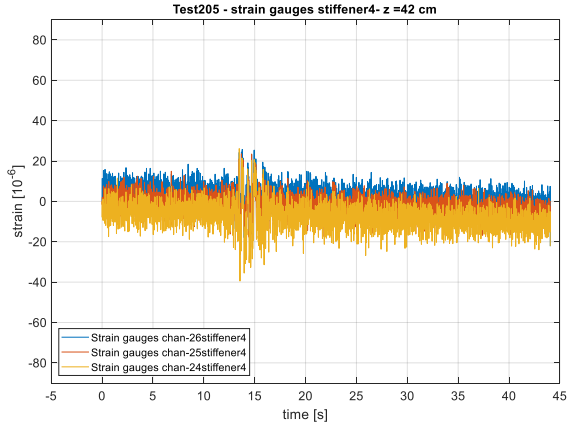


Quota Z = 250 cm

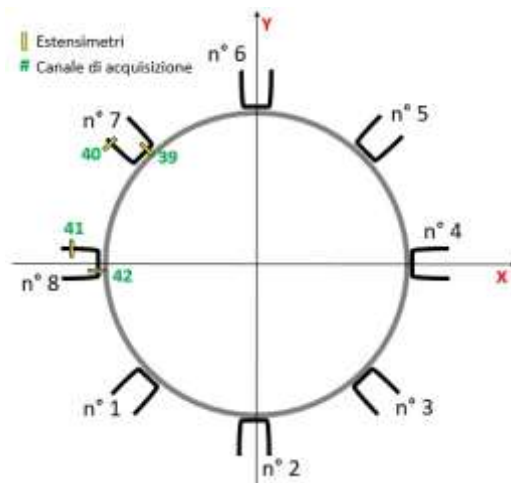
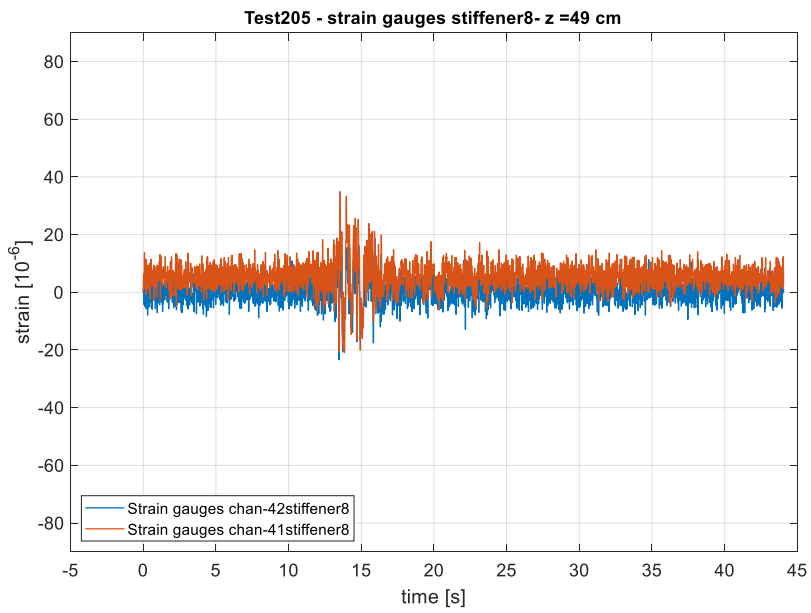
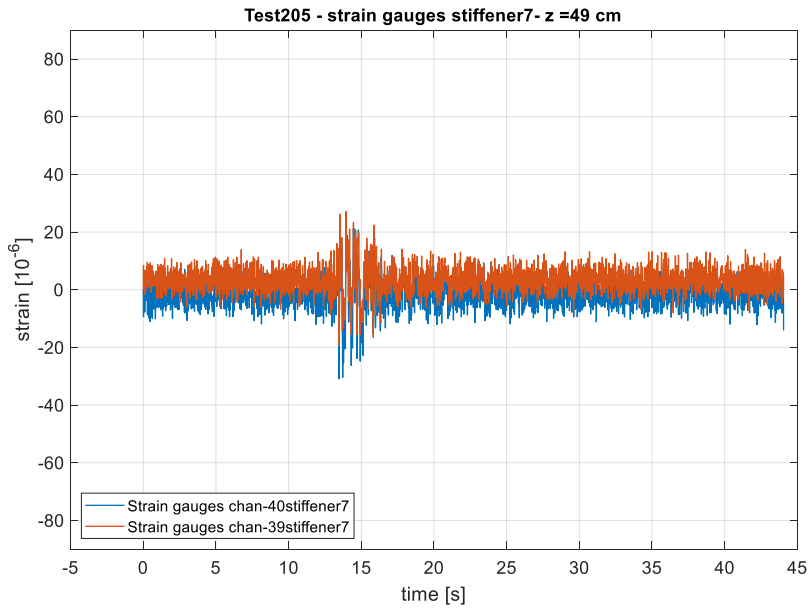


Earthquake input RS3 0.1 g: Test 205

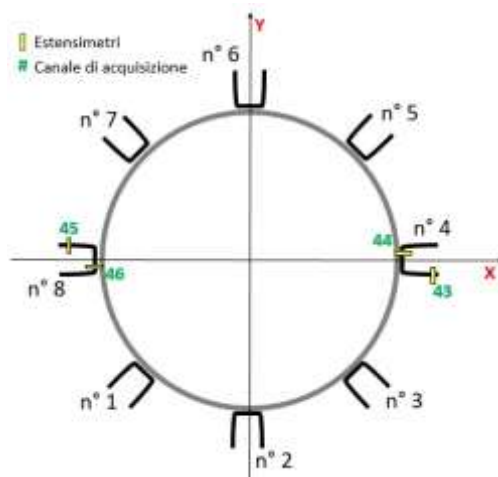
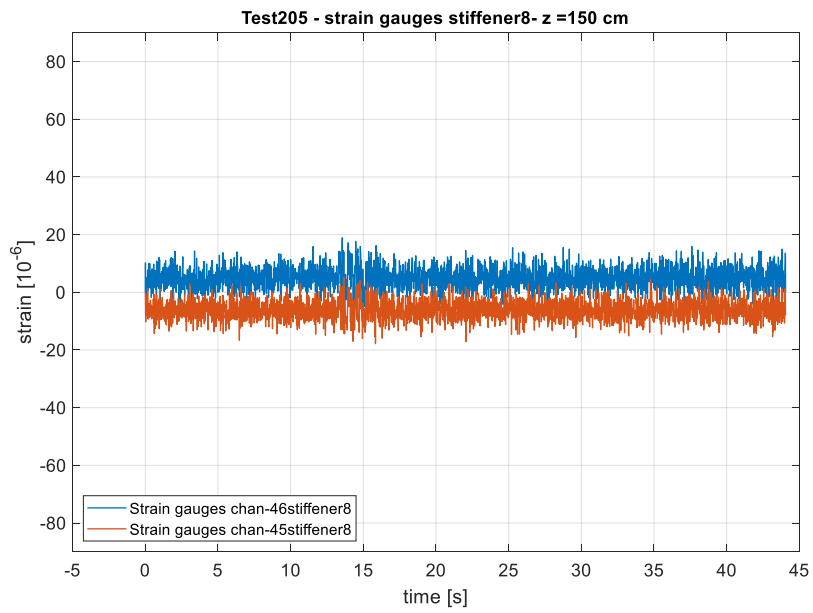
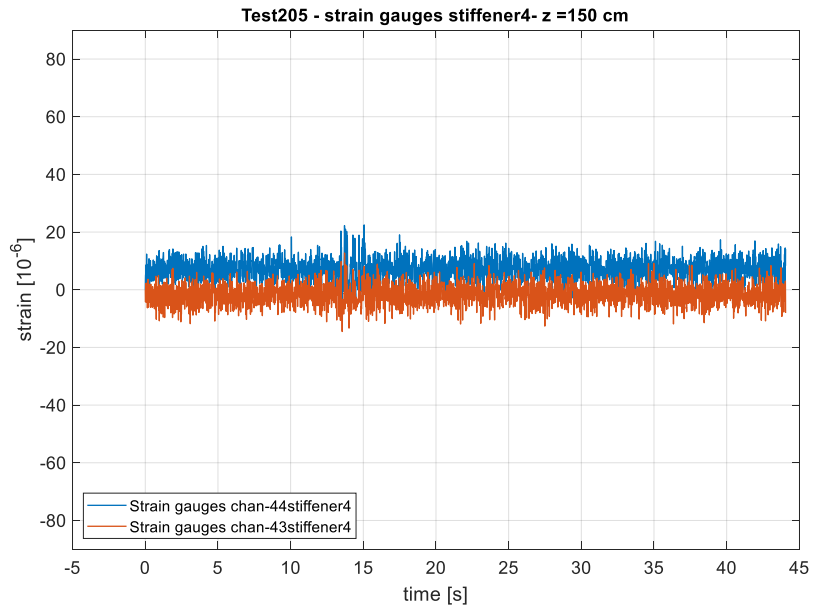
Quota Z = 42 cm



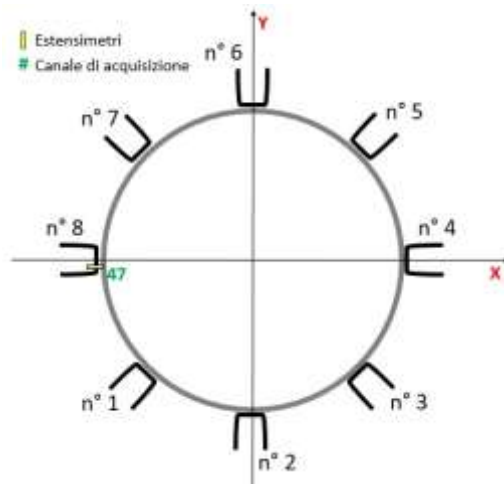
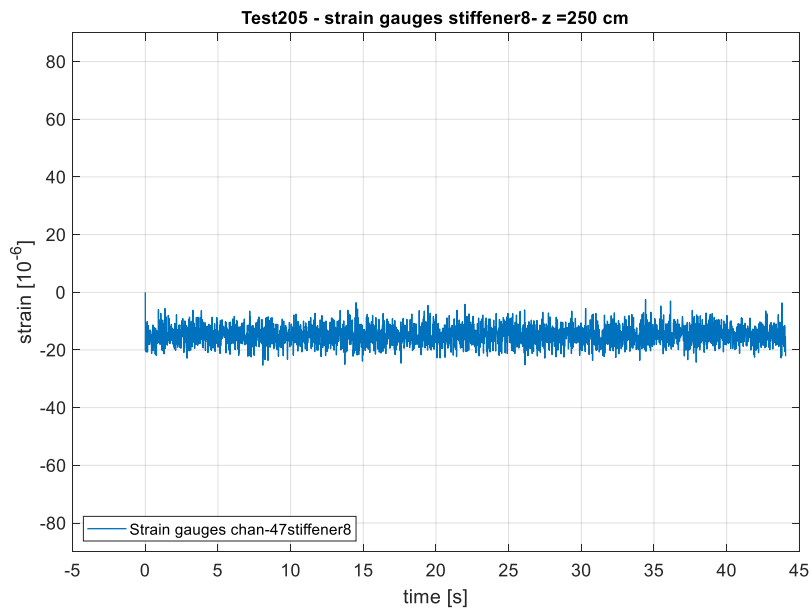
Quota Z = 49 cm



Quota Z = 150 cm

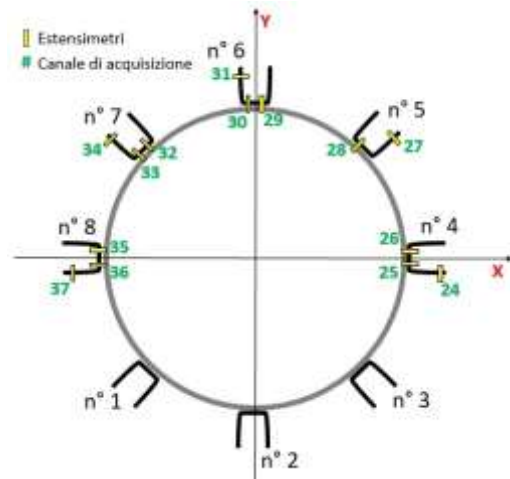
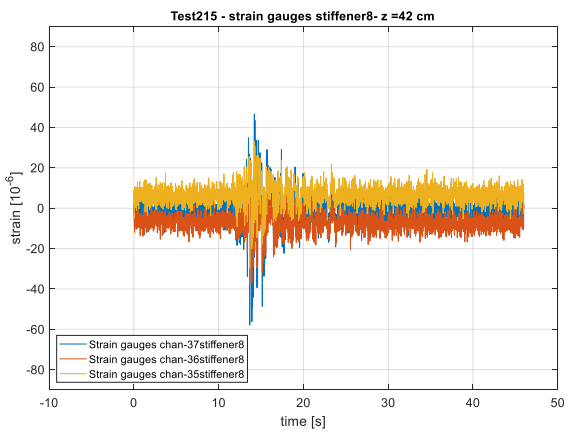
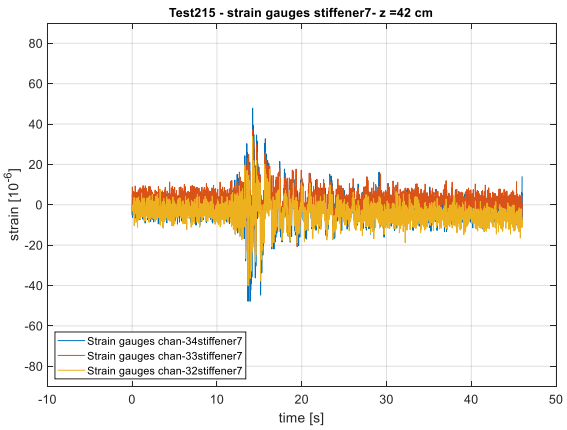
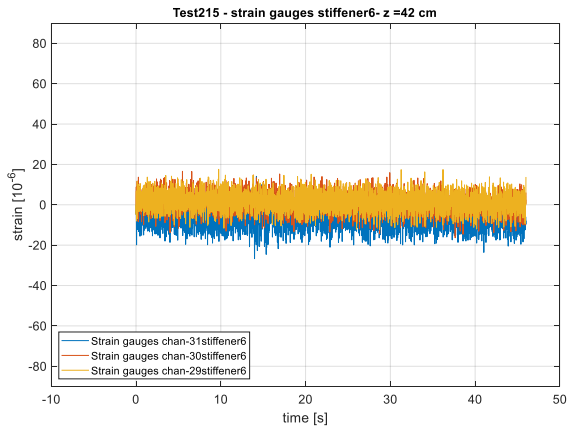
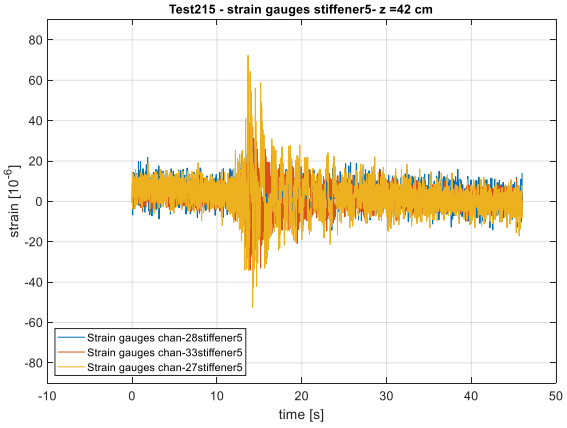
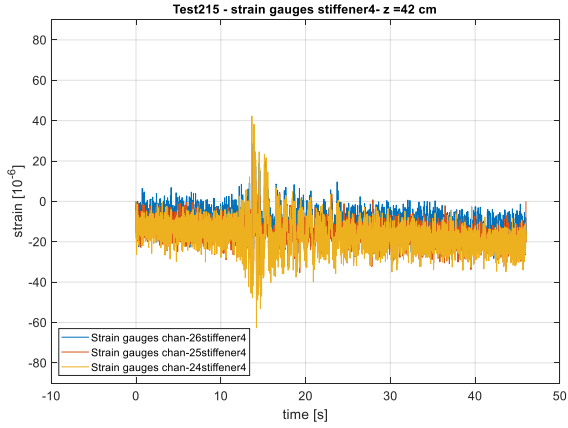


Quota Z = 250 cm

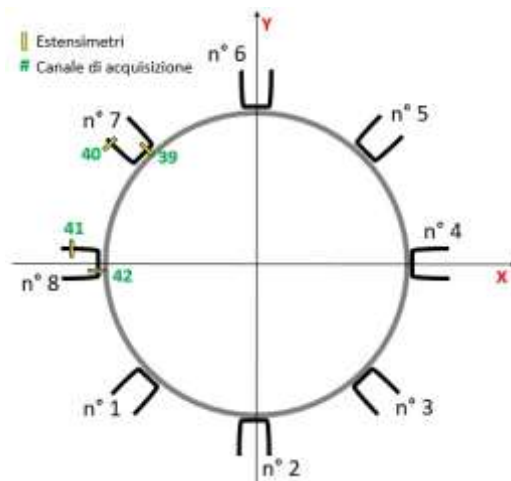
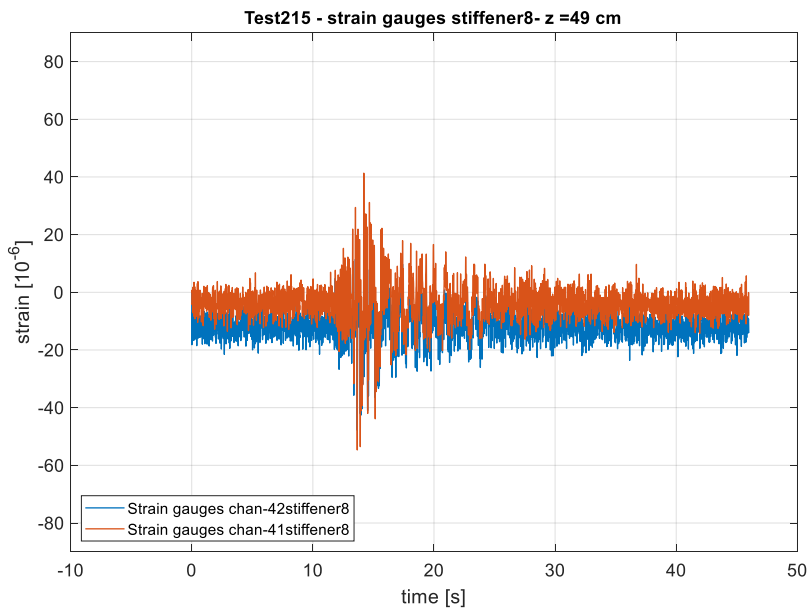
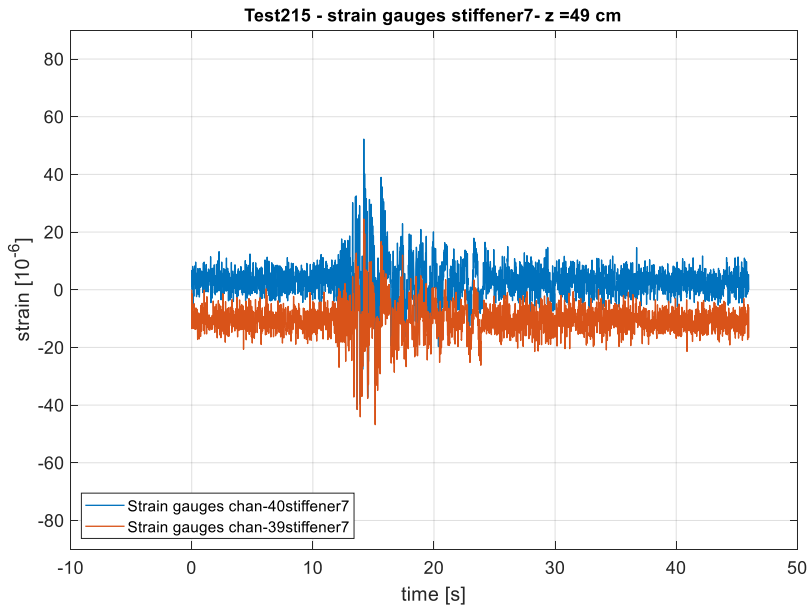


Earthquake input RS3 0.3 g: Test 215

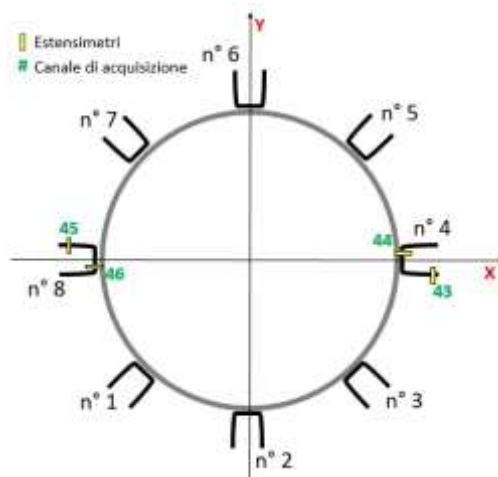
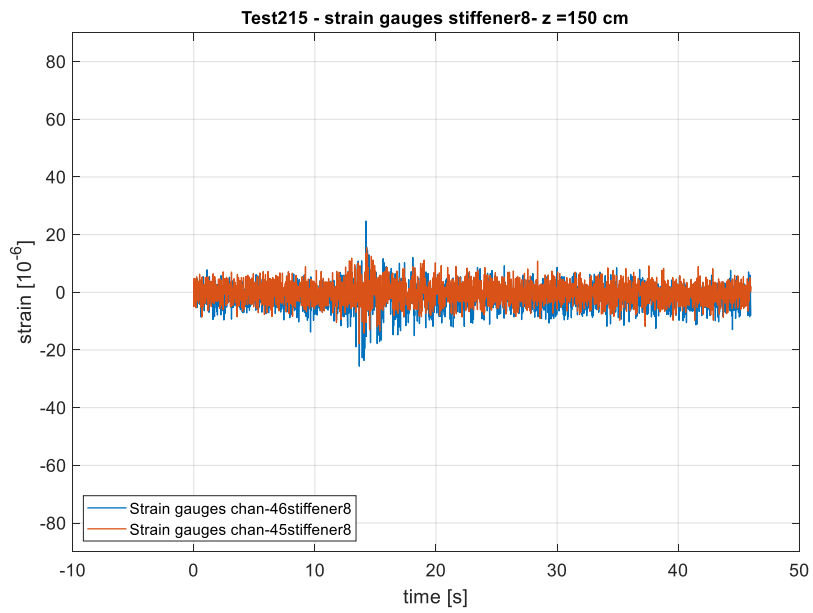
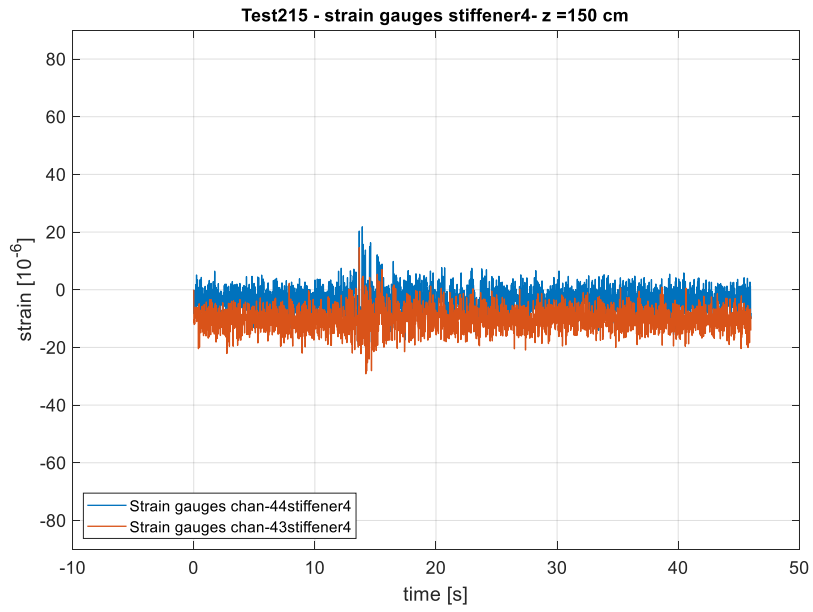
Quota Z = 42 cm



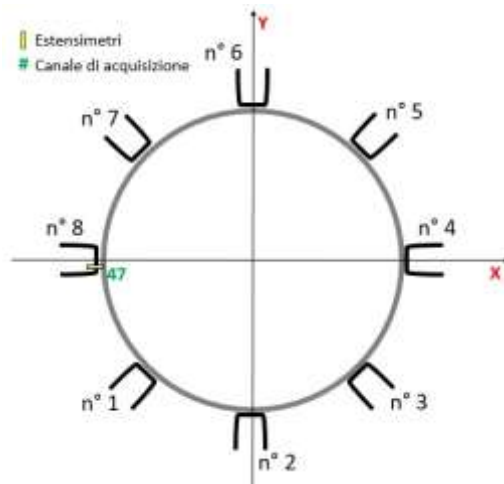
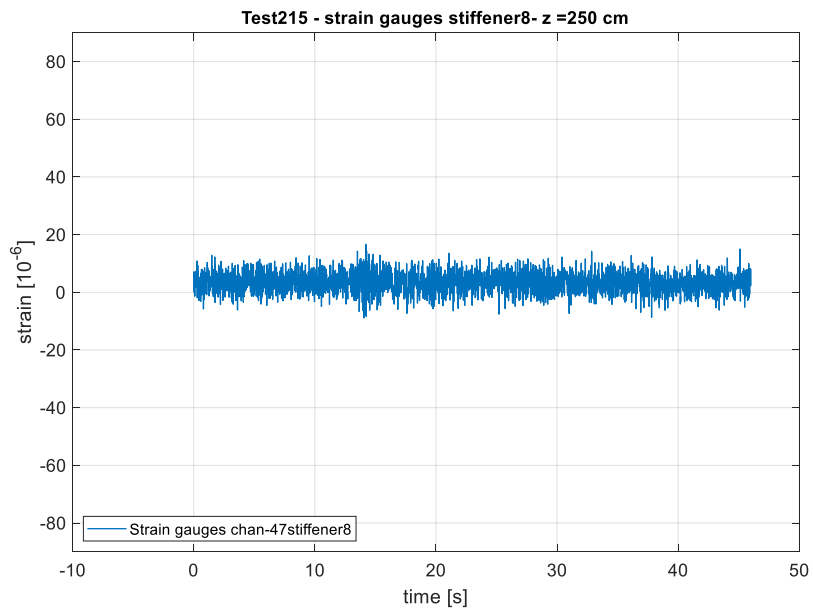
Quota Z = 49 cm



Quota Z = 150 cm

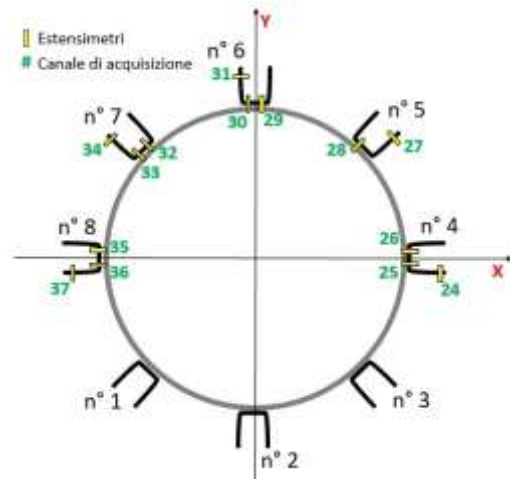
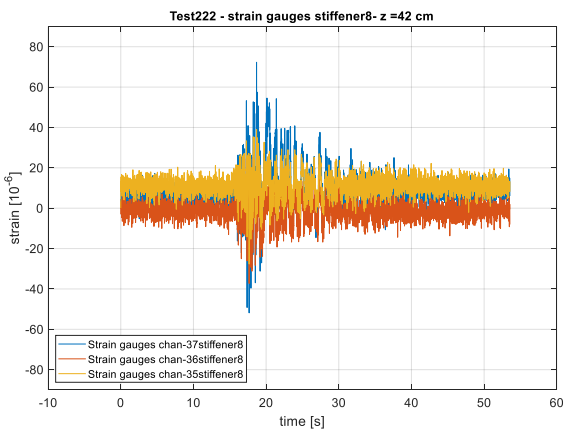
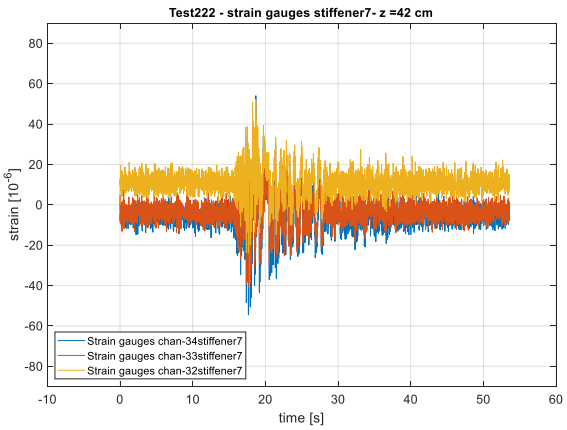
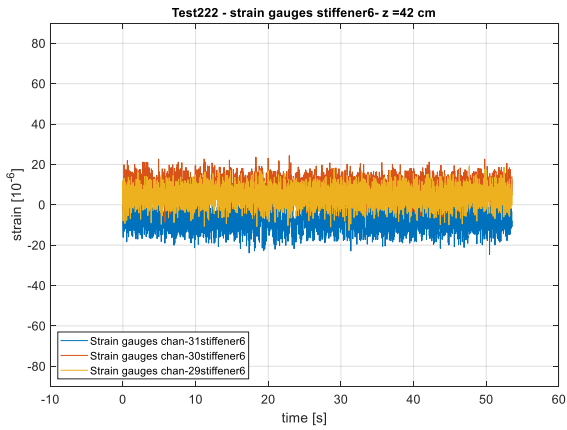
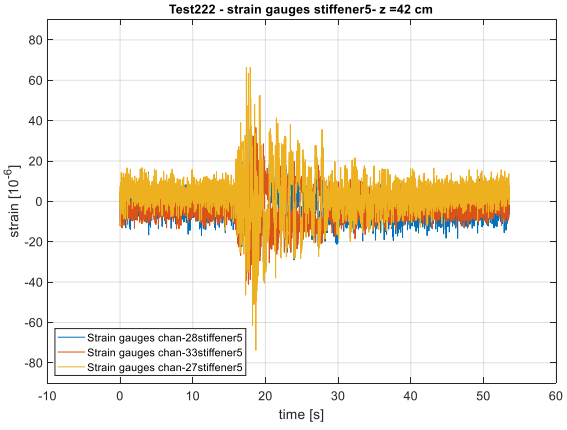
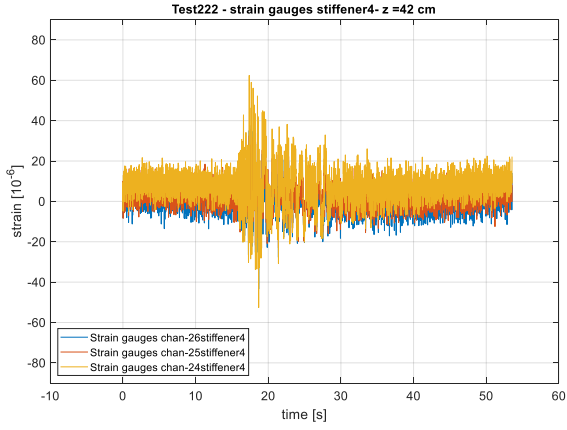


Quota Z = 250 cm

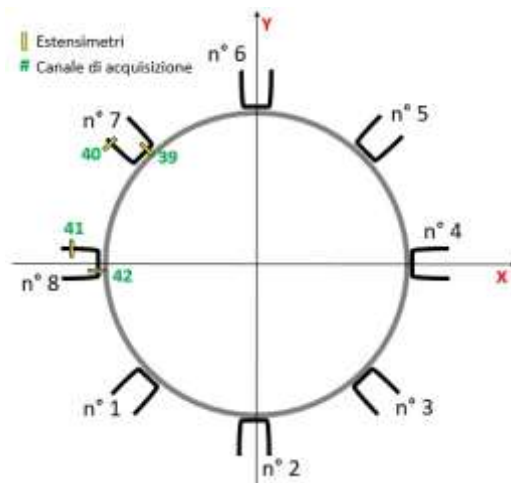
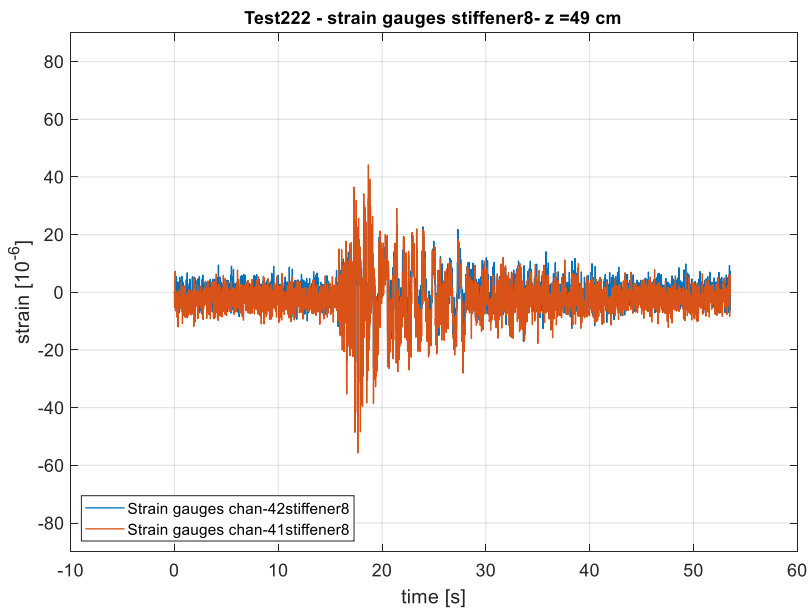
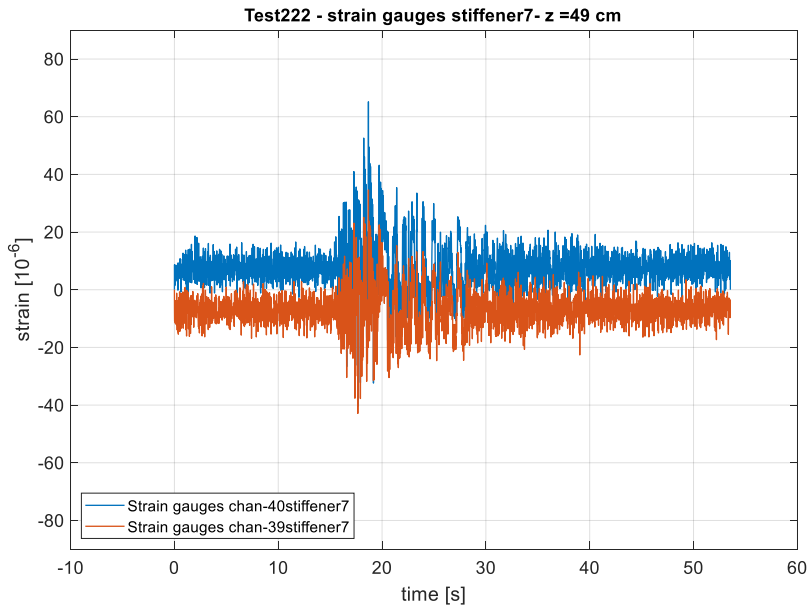


Earthquake input RS3 0.5 g: Test 222

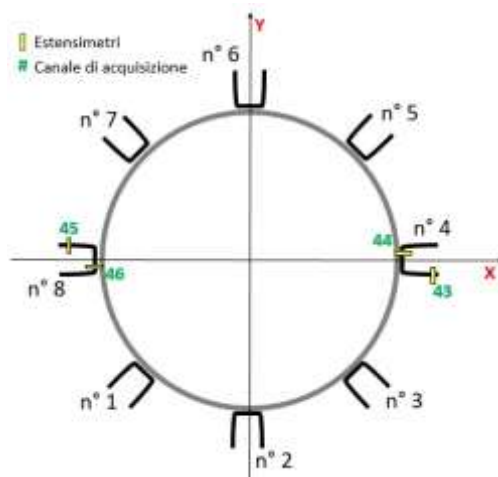
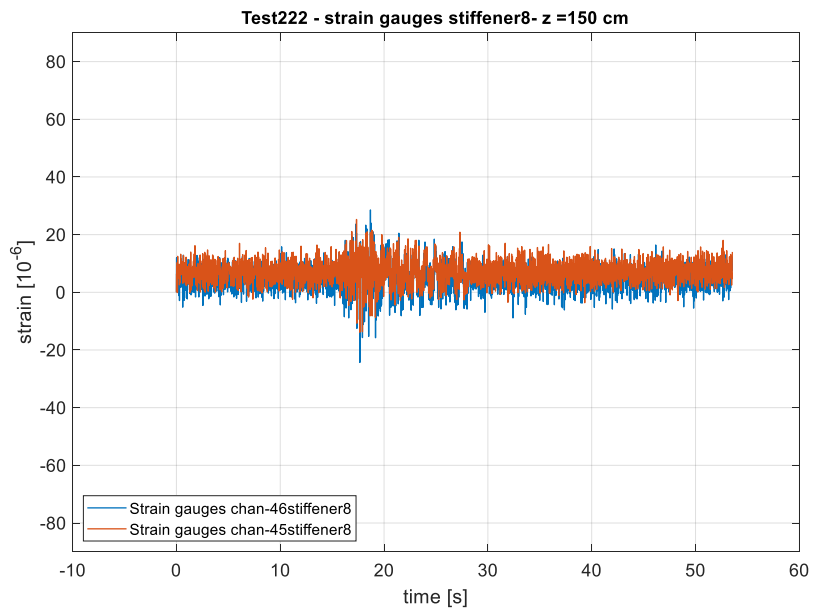
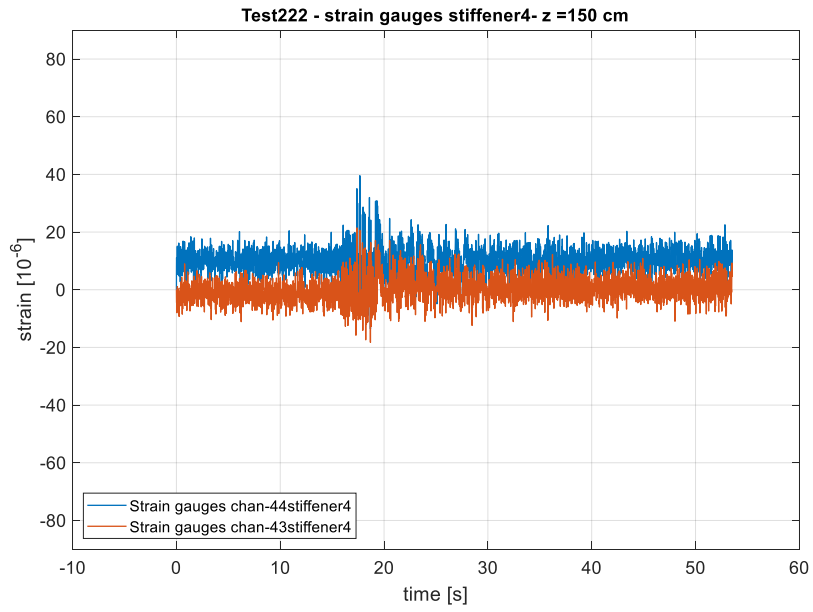
Quota Z = 42 cm



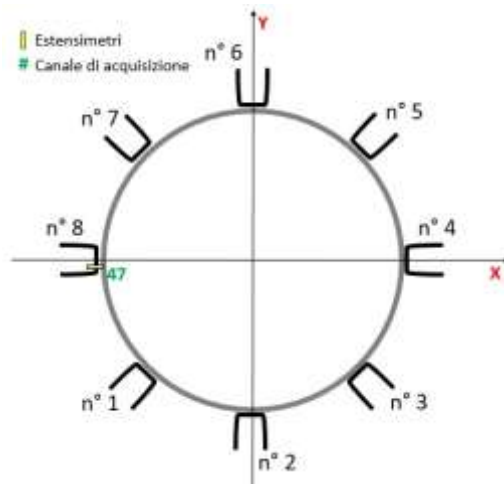
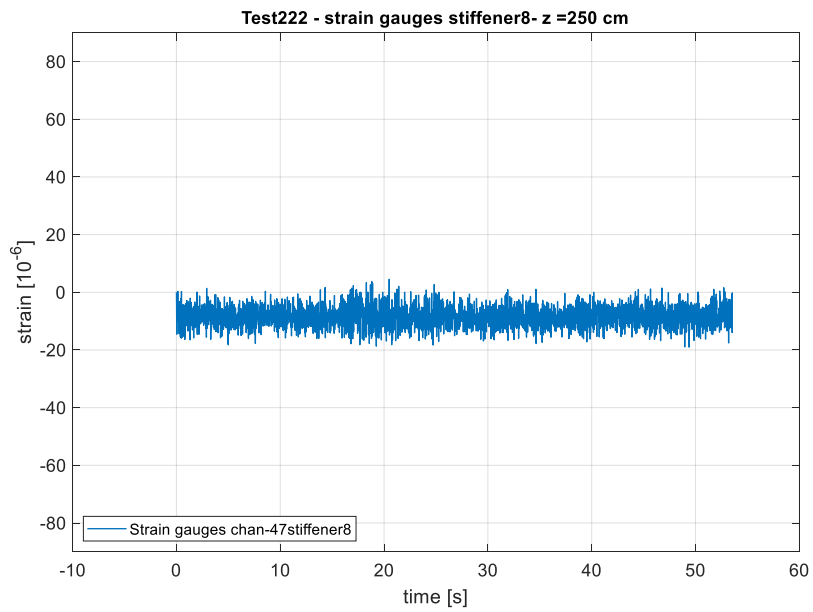
Quota Z = 49 cm



Quota Z = 150 cm

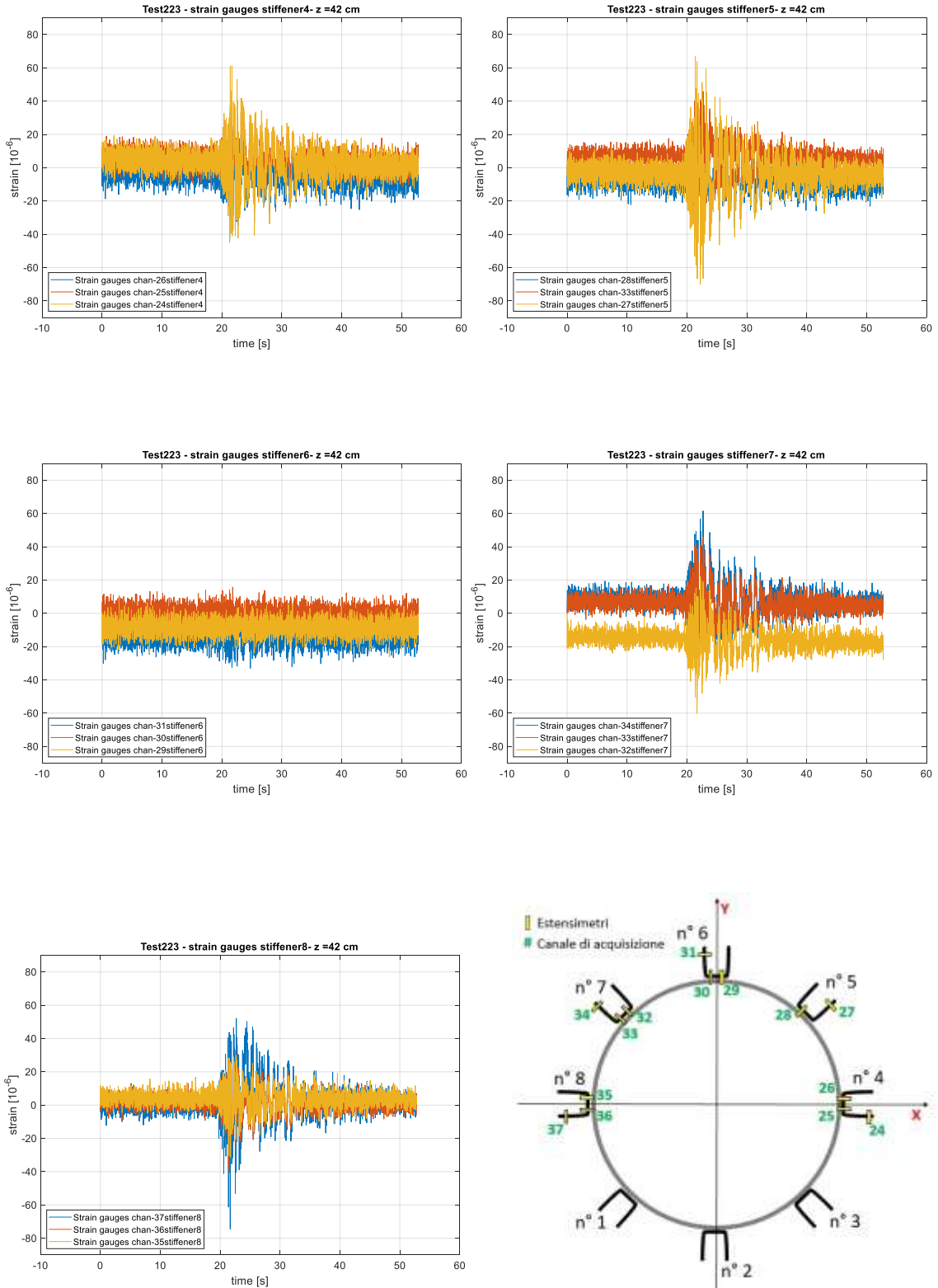


Quota Z = 250 cm

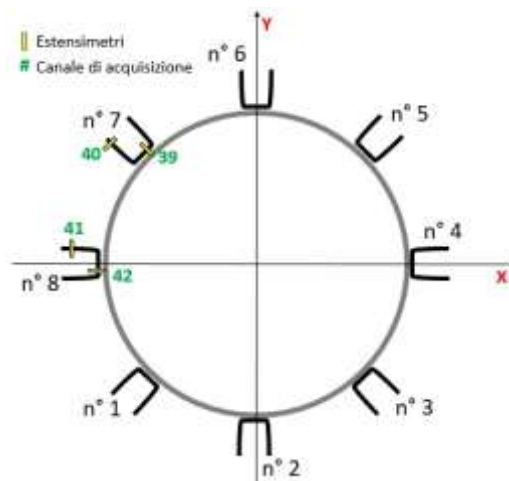
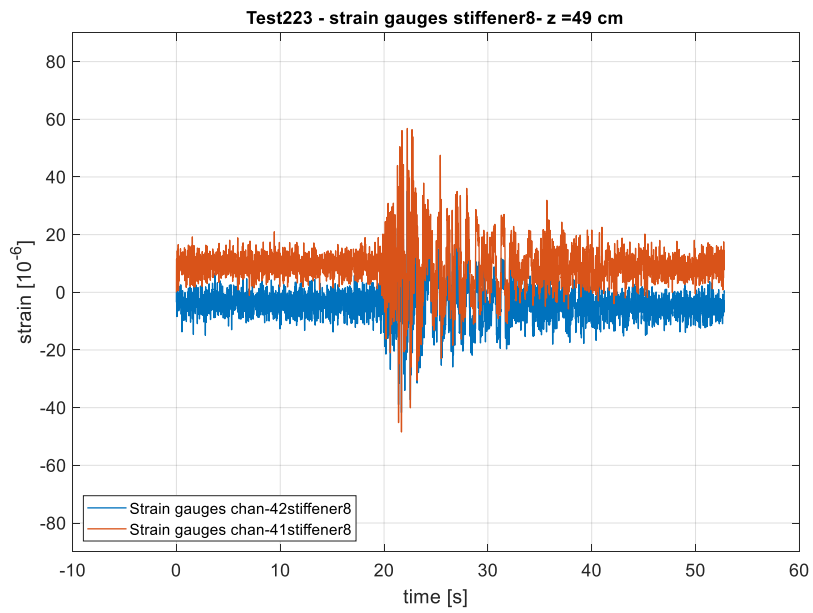
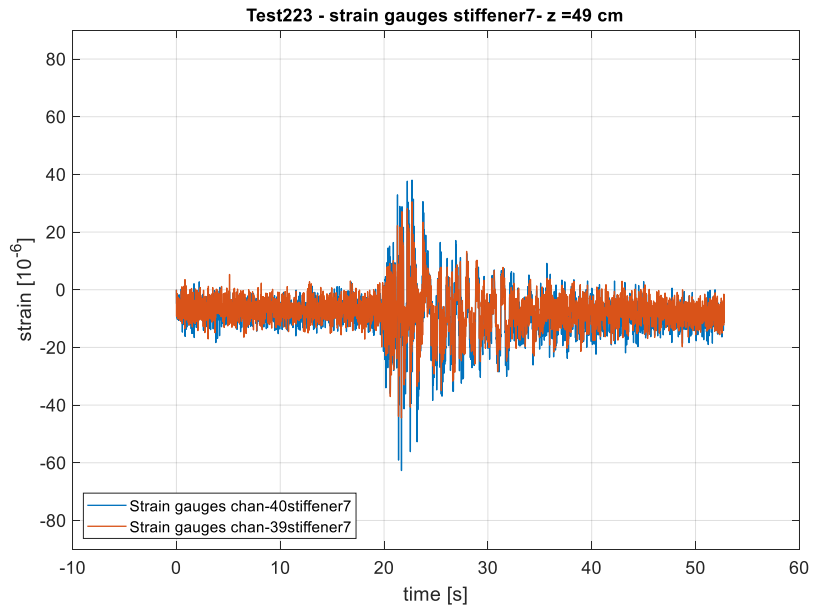


Earthquake input RS3 0.55 g: Test 223

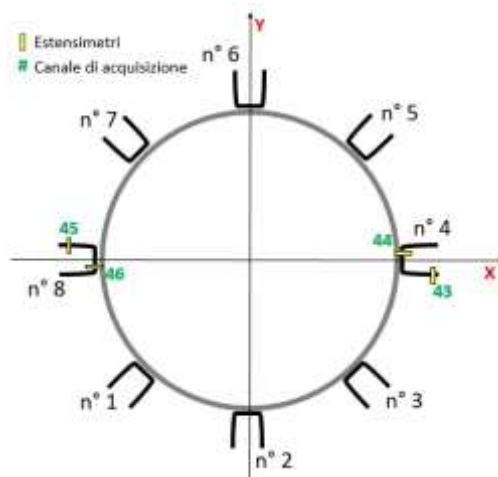
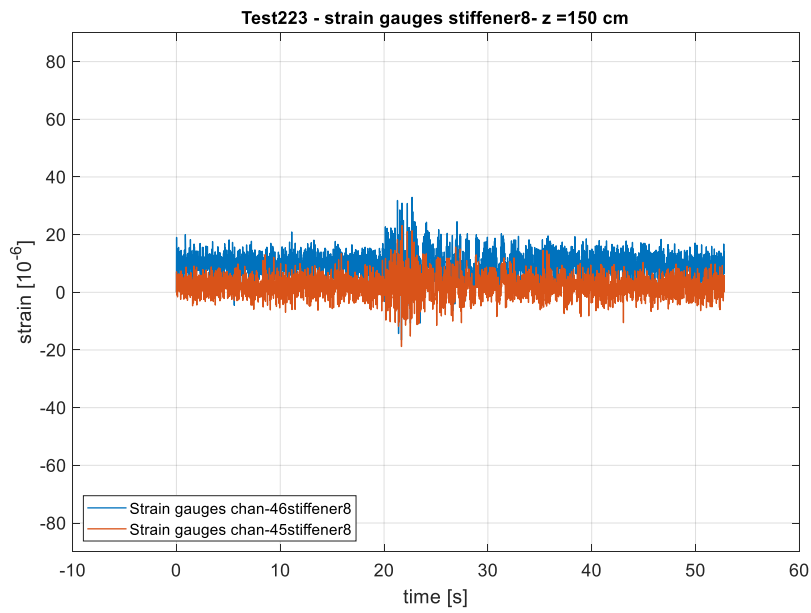
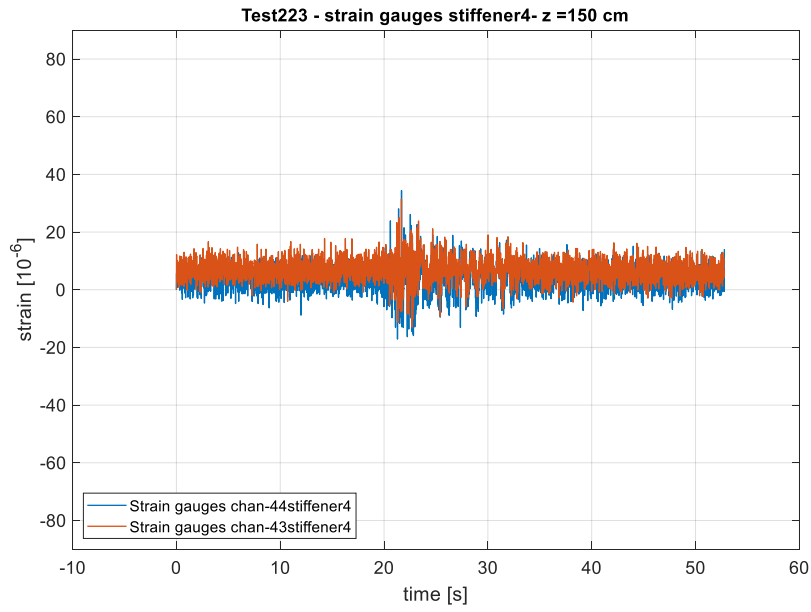
Quota Z = 42 cm



Quota Z = 49 cm



Quota Z = 150 cm



Quota Z = 250 cm

