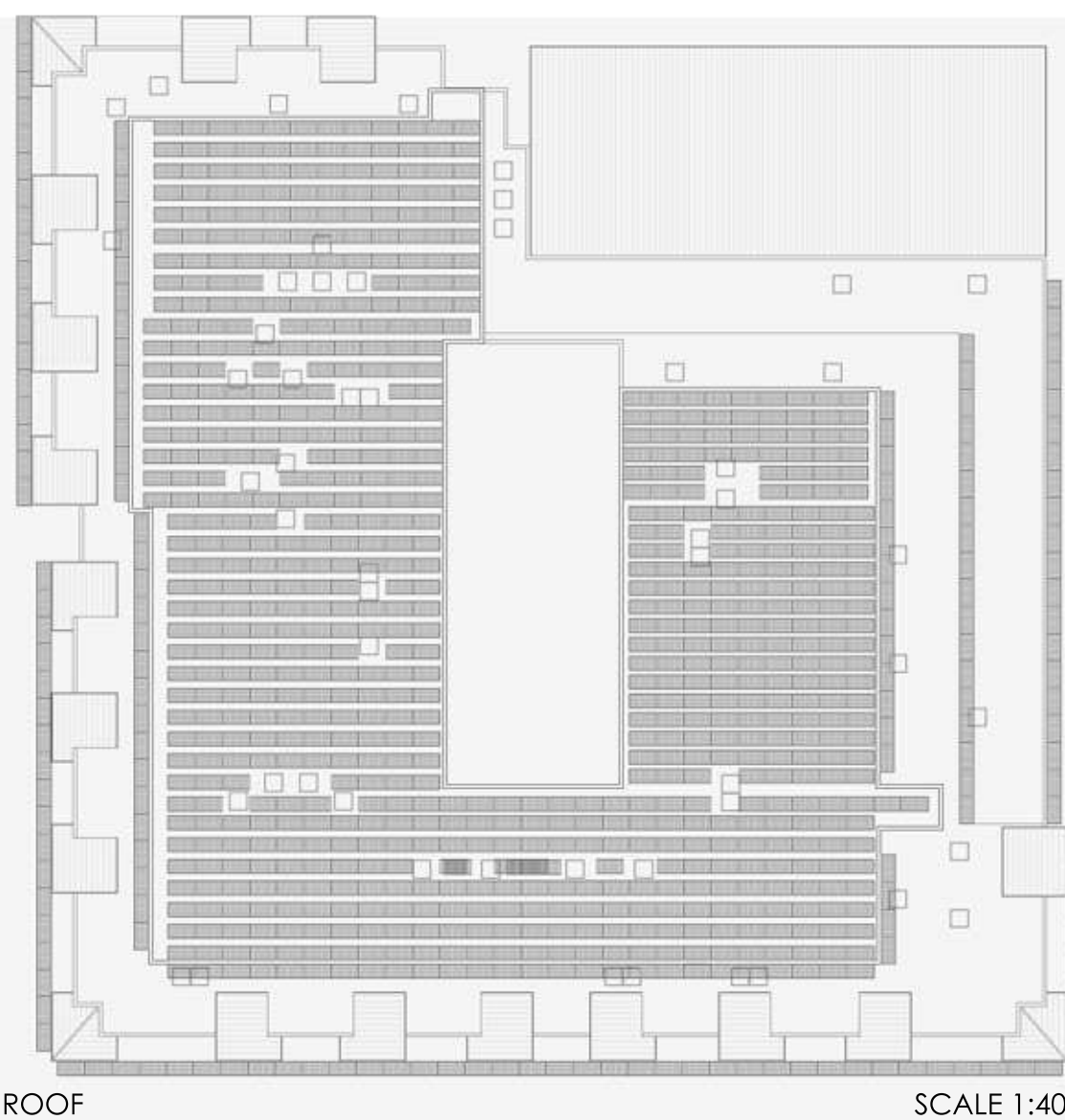




SOUTH FRONT INSTALLED PHOTOVOLTAIC PANELS DATA:
 MODULE TYPE: Standard
 ARRAY TYPE: Fixed, open rack
 NUMBER OF PANELS: 213
 SYSTEM SIZE: 35.5 kW
 SYSTEM LOSSES: 14%
 TILT: 33°
 AZIMUT: 180°
 DC TO AC SIZE RATIO: 1.25
 INVERTER EFFICIENCY: 96%

PRODUCTIVITY:
41 677 kWh/year



FLAT ROOF INSTALLED PHOTOVOLTAIC PANELS DATA:
 MODULE TYPE: Standard
 ARRAY TYPE: Roof mounting
 NUMBER OF PANELS: 761
 SYSTEM SIZE: 228.3 kW
 SYSTEM LOSSES: 14%
 TILT: 33°
 AZIMUT: 180°

DC TO AC SIZE RATIO: 1.25
 INVERTER EFFICIENCY: 96%

PRODUCTIVITY: 262 077 kWh/year



WEST FRONT INSTALLED PHOTOVOLTAIC PANELS DATA:
 MODULE TYPE: Standard
 ARRAY TYPE: Fixed, open rack
 NUMBER OF PANELS: 185
 SYSTEM SIZE: 55.5 kW
 SYSTEM LOSSES: 14%
 TILT: 20°
 AZIMUT: 270°
 DC TO AC SIZE RATIO: 1.25
 INVERTER EFFICIENCY: 96%

PRODUCTIVITY:
54 428 kWh/year



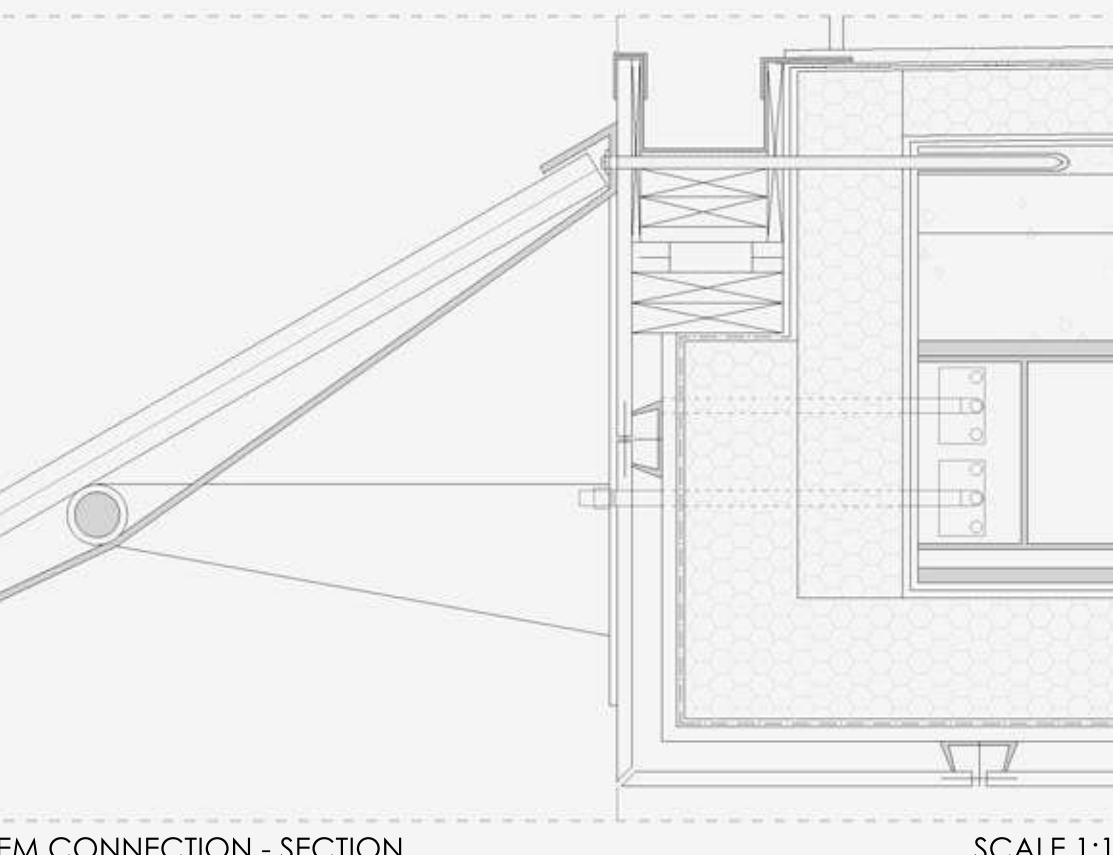
PHOTOVOLTAIC TO FACADE SYSTEM CONNECTION - SECTION

SCALE 1:10



EAST FRONT INSTALLED PHOTOVOLTAIC PANELS DATA:
 MODULE TYPE: Standard
 ARRAY TYPE: Fixed, open rack
 NUMBER OF PANELS: 128
 SYSTEM SIZE: 38.4 kW
 SYSTEM LOSSES: 14%
 TILT: 20°
 AZIMUT: 90°
 DC TO AC SIZE RATIO: 1.25
 INVERTER EFFICIENCY: 96%

PRODUCTIVITY:
34 805 kWh/year



OVERALL SYSTEM PRODUCTIVITY: 392 987 kWh/year

