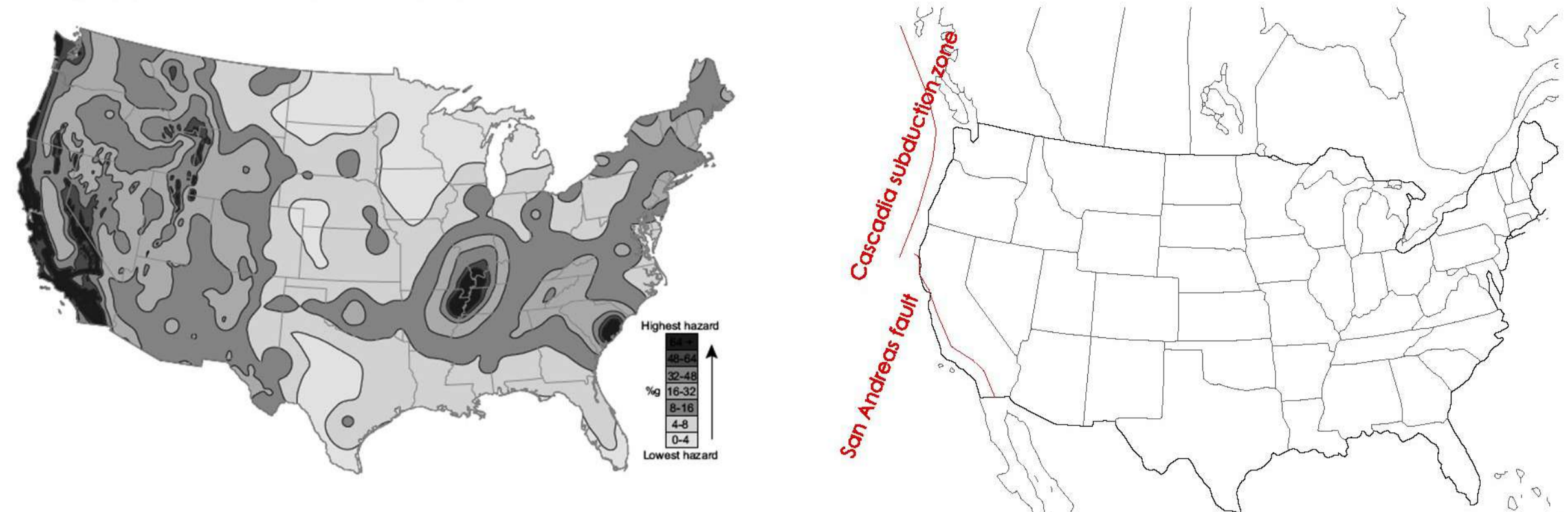
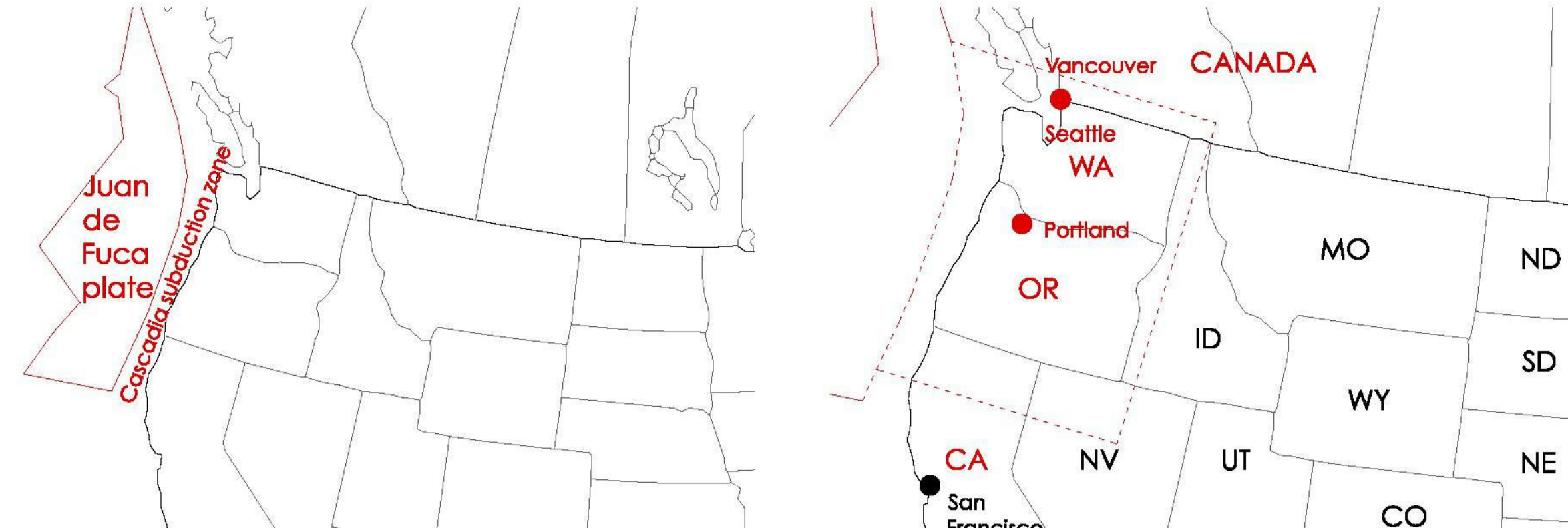


THE CASCADIA THREAT: WHAT IS IT?



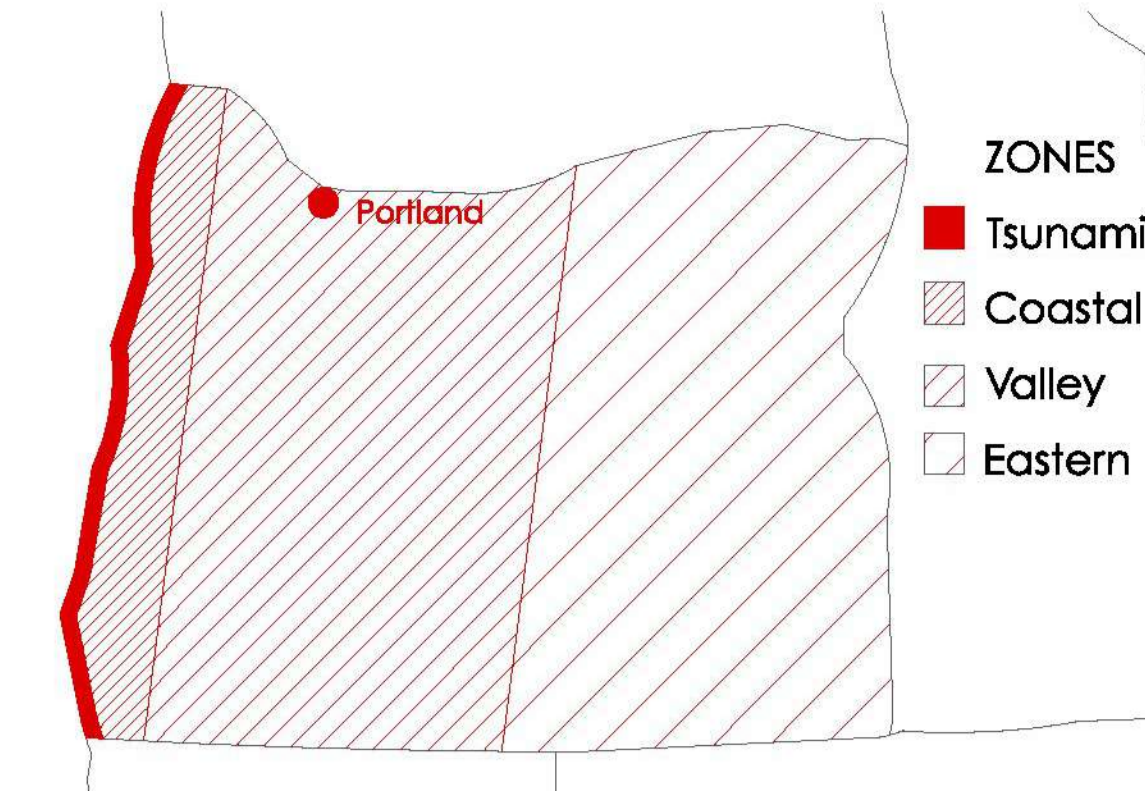
Most people in the United States know just one fault line by name: the San Andreas, which is perpetually rumored to be on the verge of unleashing "the big one." That rumor is misleading, no matter what the San Andreas ever does. Fault lines have an upper limit.

Just north of the San Andreas lies the Cascadia subduction zone. It runs for seven hundred miles off the coast of the Pacific Northwest. Its next full-margin rupture of the Cascadia subduction zone will spell the worst natural disaster in the history of the continent.



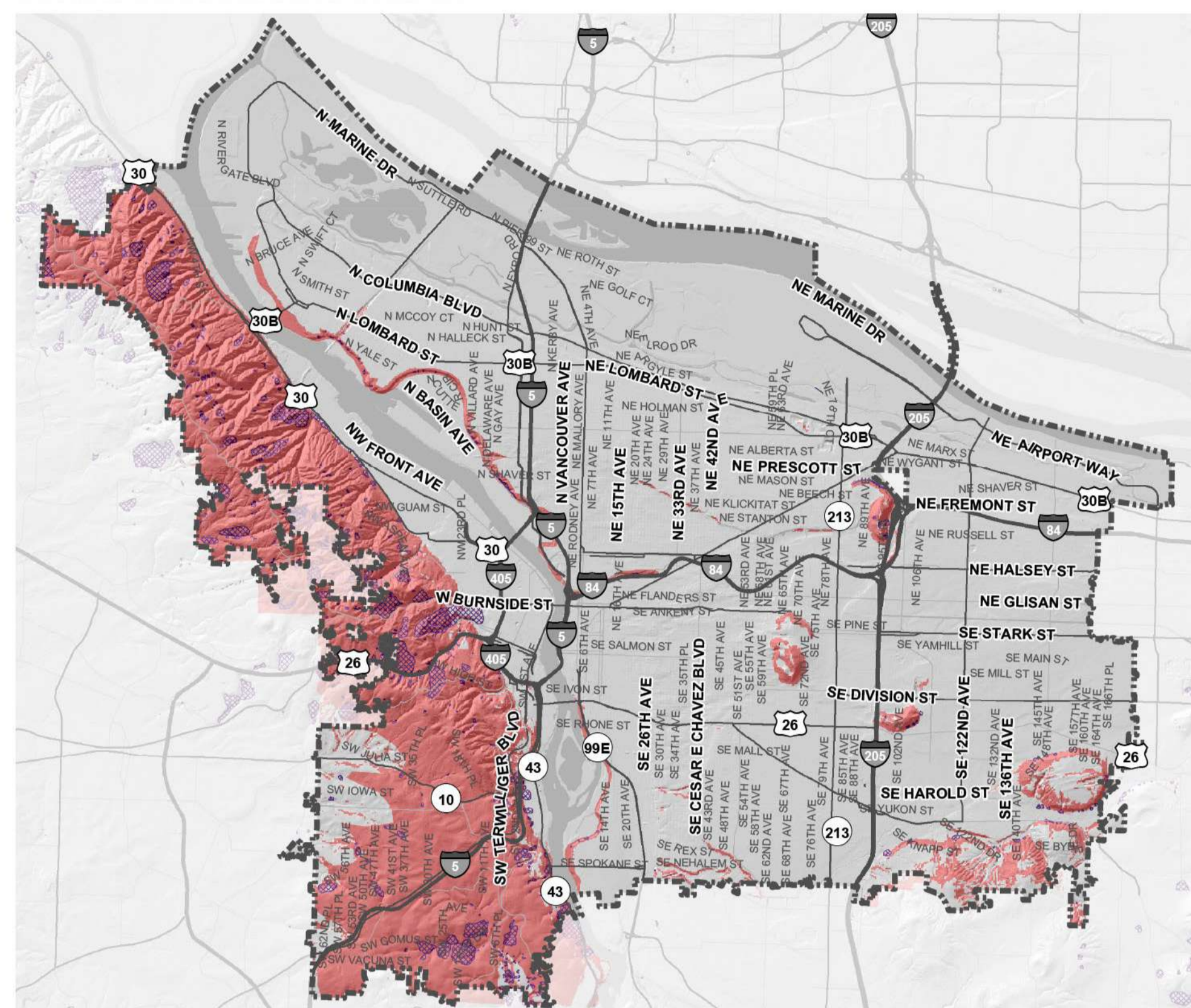
The earthquake will release enough energy to equal 16 000 Hiroshima nuclear bombs. The northwest edge of the continent, from California to Canada and the continental shelf to the Cascades, will drop by as much as six feet and rebound to a hundred feet to the west.

Lifeline and structures will suffer catastrophic damage over an 80 000 square mile area. The earthquake will last 5 minutes and plunge 10 million people into darkness.



Oregon's impact zones for the magnitude 9 Cascadia earthquake. Damage will be extreme in the Tsunami zone, heavy in the Coastal zone, moderate in the Valley zone and light in the Eastern zone.

THE CASCADIA THREAT: AFTERMATH



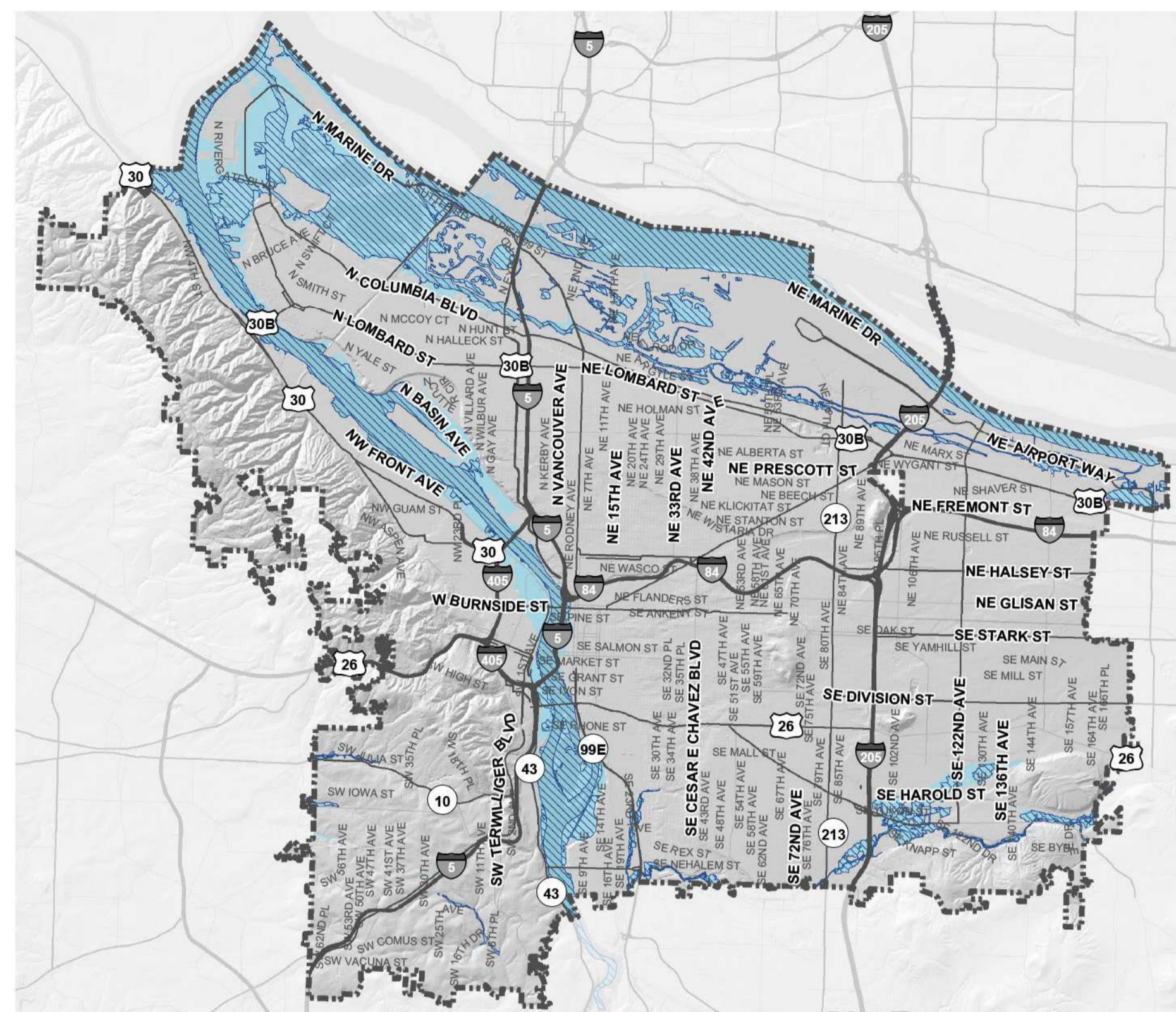
MITIGATION ACTION PLAN

Regulatory landslide Hazard Area

LEGEND

- City Boundary
- Historic Landslide Deposits
- Landslide Hazard Area

DATA SOURCE:
Portland Bureau of Emergency Management



MITIGATION ACTION PLAN

Flood hazard - 100 year and 500 year flood zone

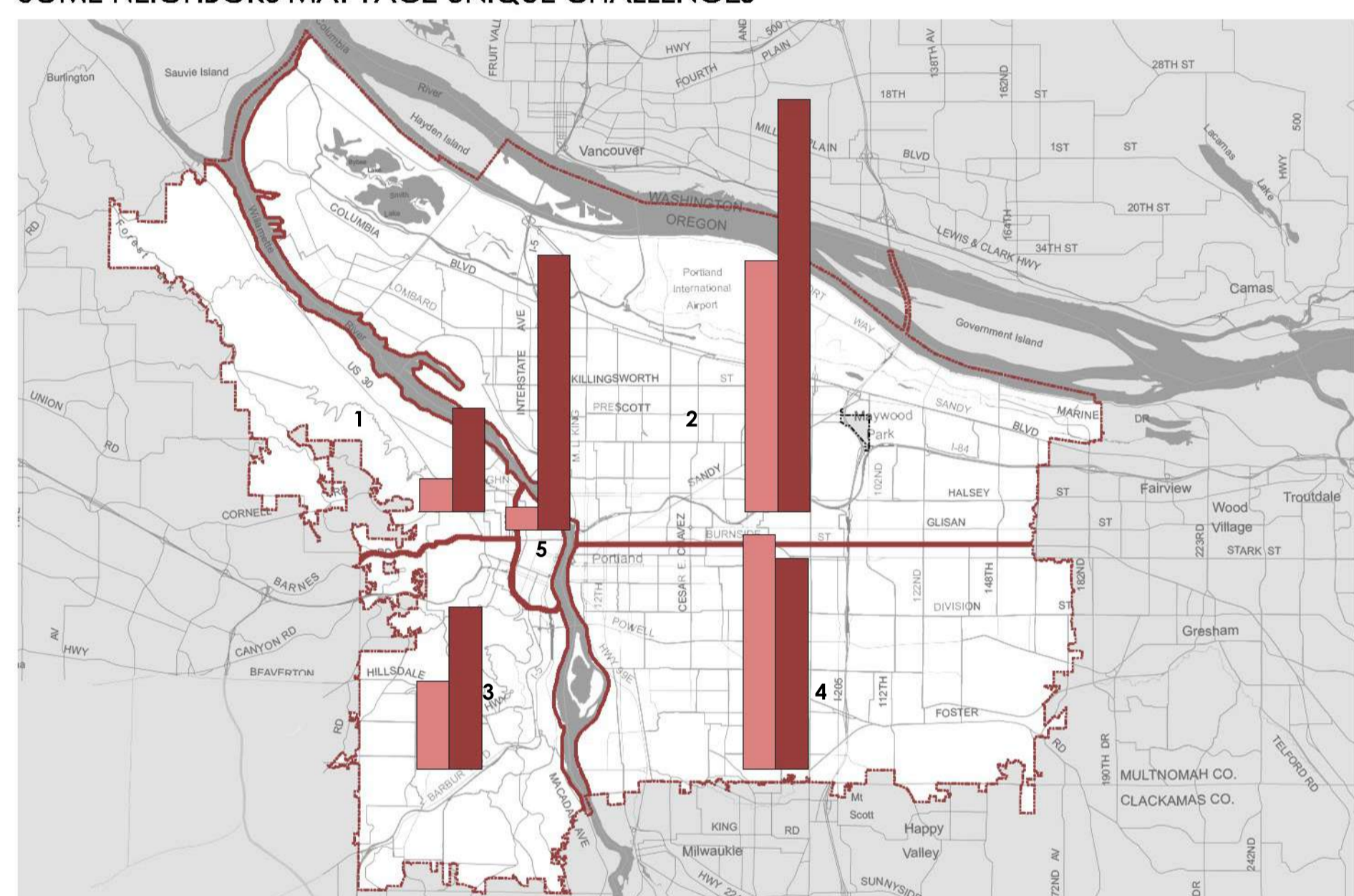
LEGEND

- City Boundary
- 100 year FEMA floodzone
- 500 year FEMA floodzone

DATA SOURCE:
Portland Bureau of Emergency Management



SOME NEIGHBORS MAY FACE UNIQUE CHALLENGES

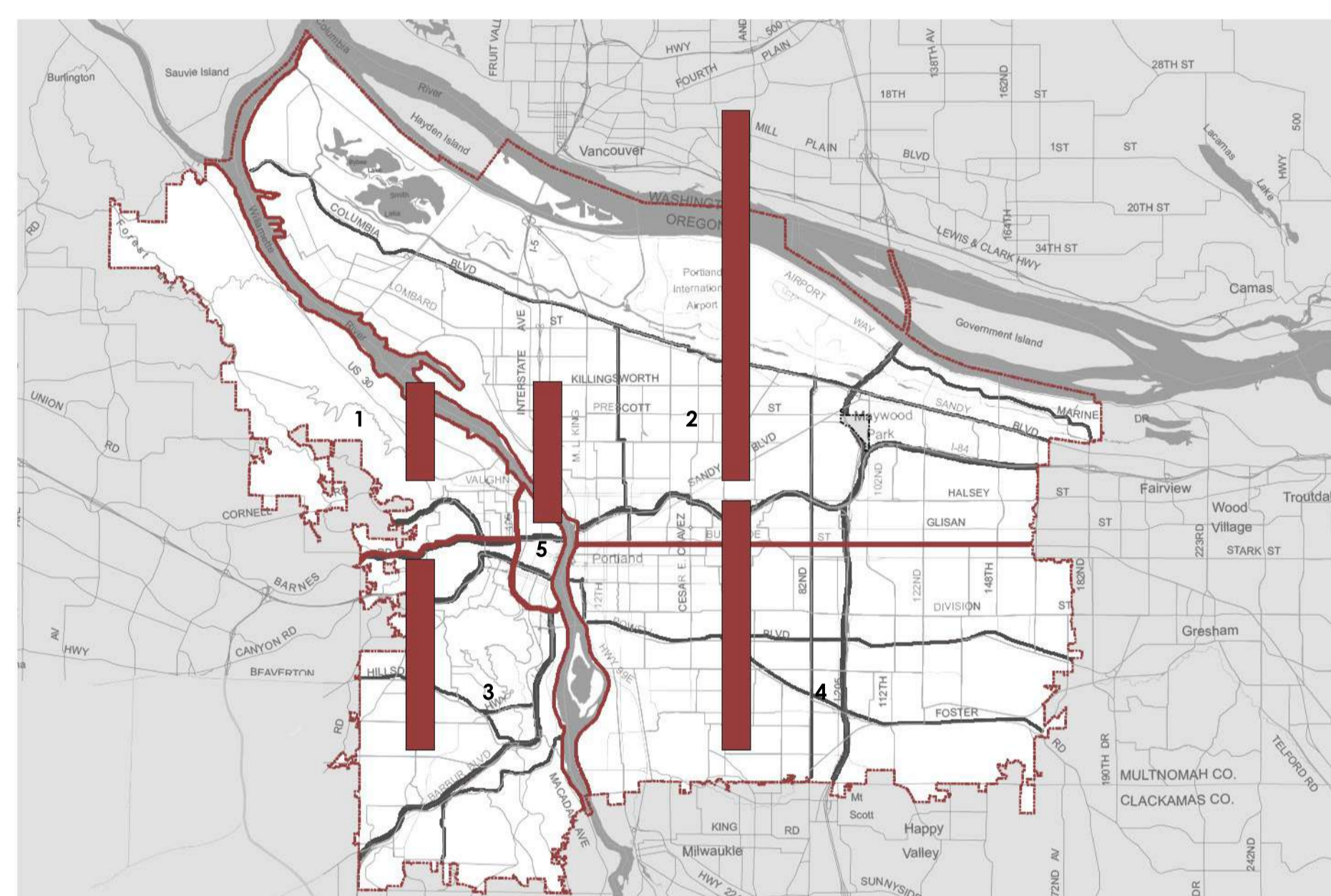


EVACUATION CRITICALNESS

LEGEND

- Households
- Employees

DATA SOURCES:
1-Portland Office of Emergency Management

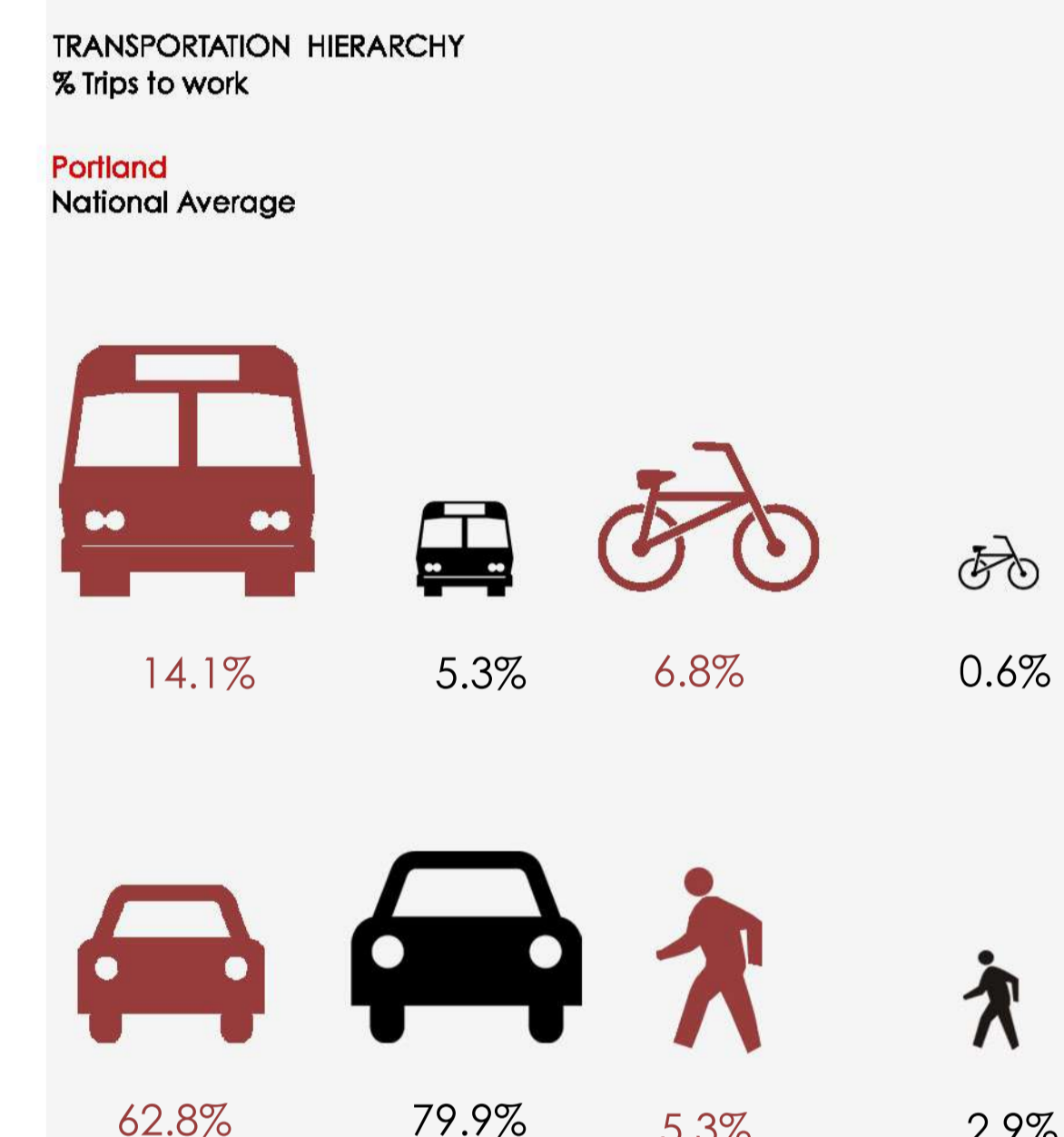


EVACUATION VELOCITY

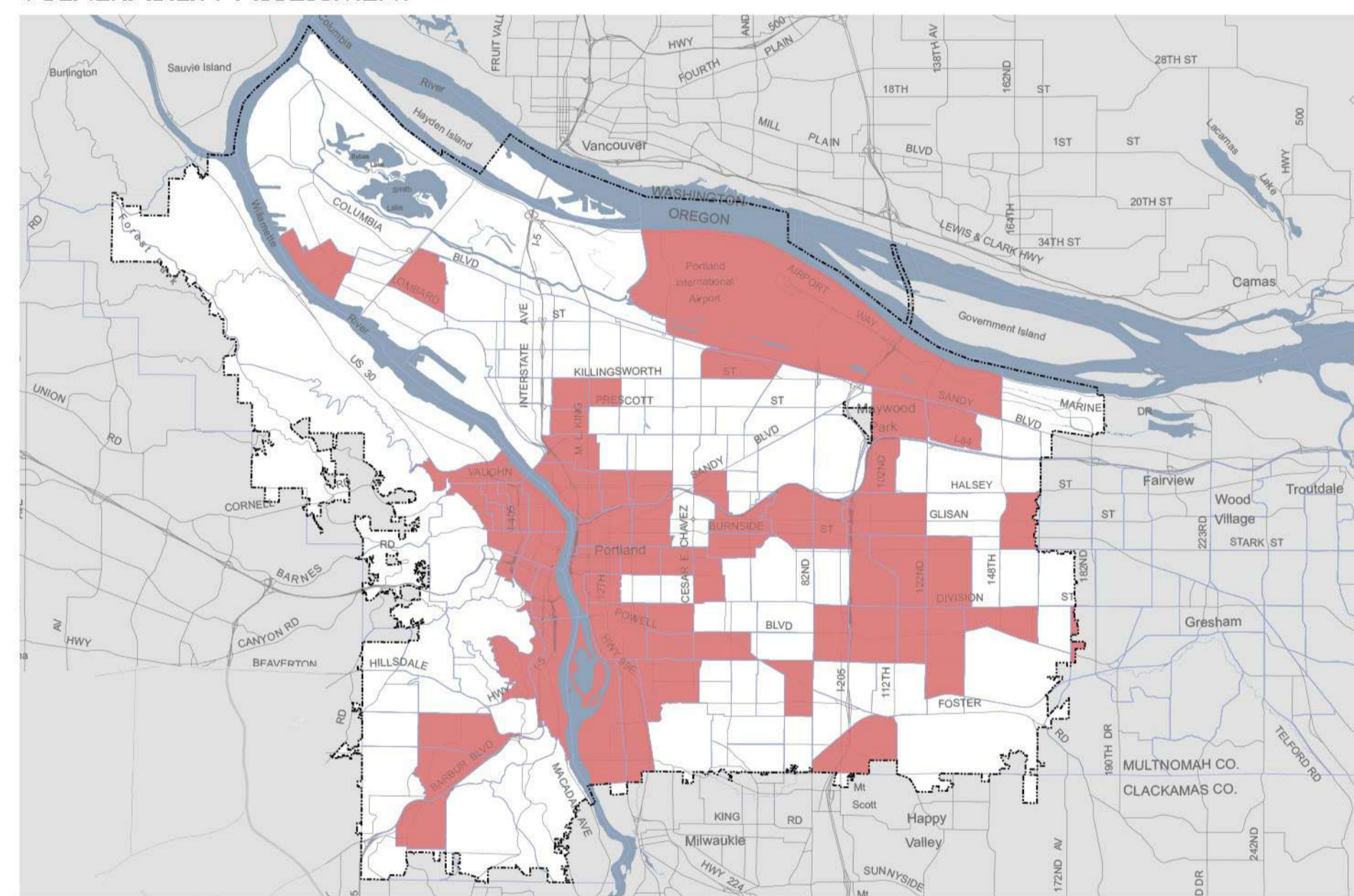
LEGEND

- Primary Routes
- Secondary Routes
- Avg Evacuating Time

DATA SOURCES:
1-Portland Office of Emergency Management



VULNERABILITY ASSESSMENT

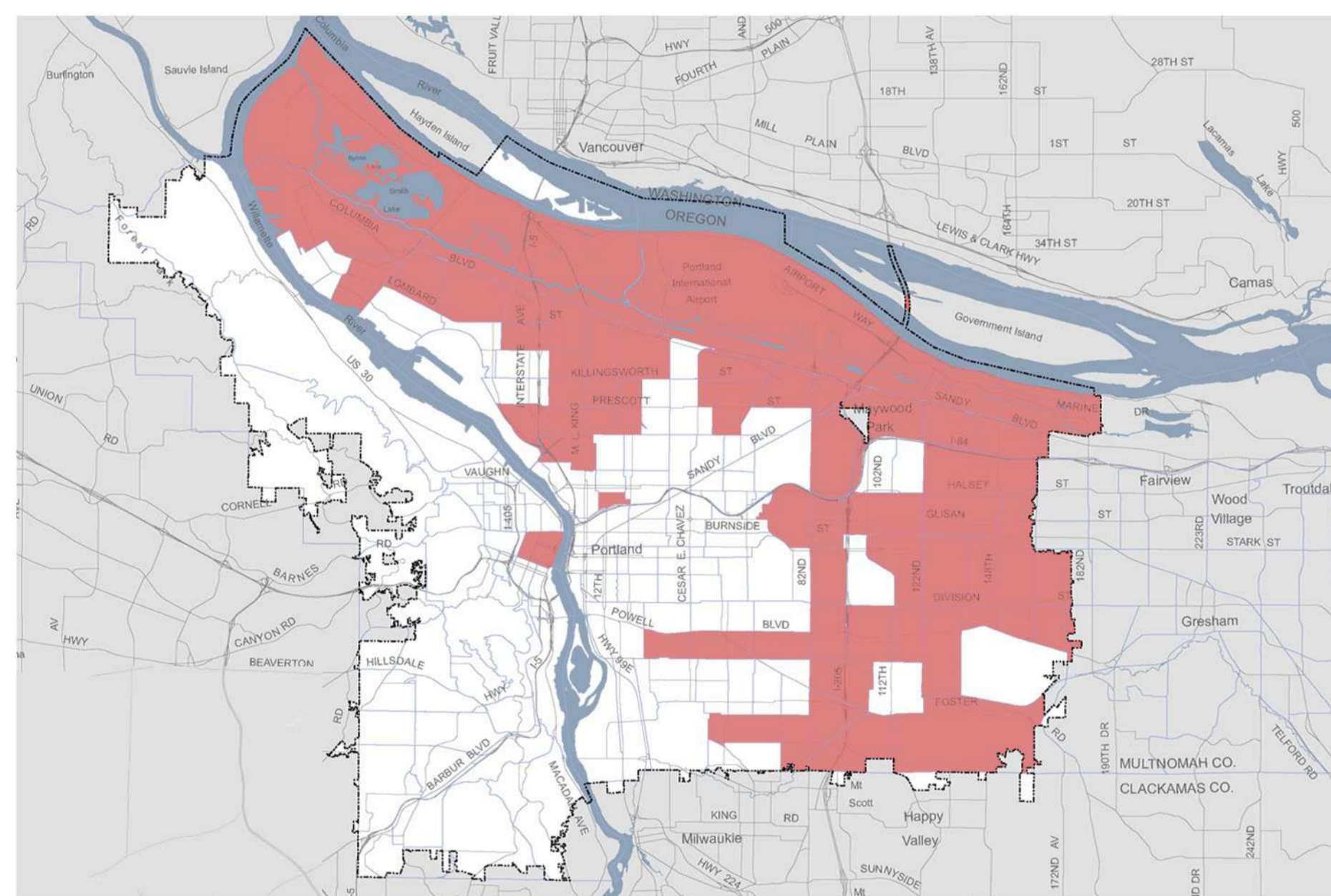


VULNERABILITY RISK FACTOR A: RENTERS

LEGEND

- City Boundary
- Share of households that are renters greater than 45.6%

DATA SOURCES:
1-2008-2012 American Community survey
2-U.S. Dept. of Housing and Urban Development CHAS Data, 2007-2011

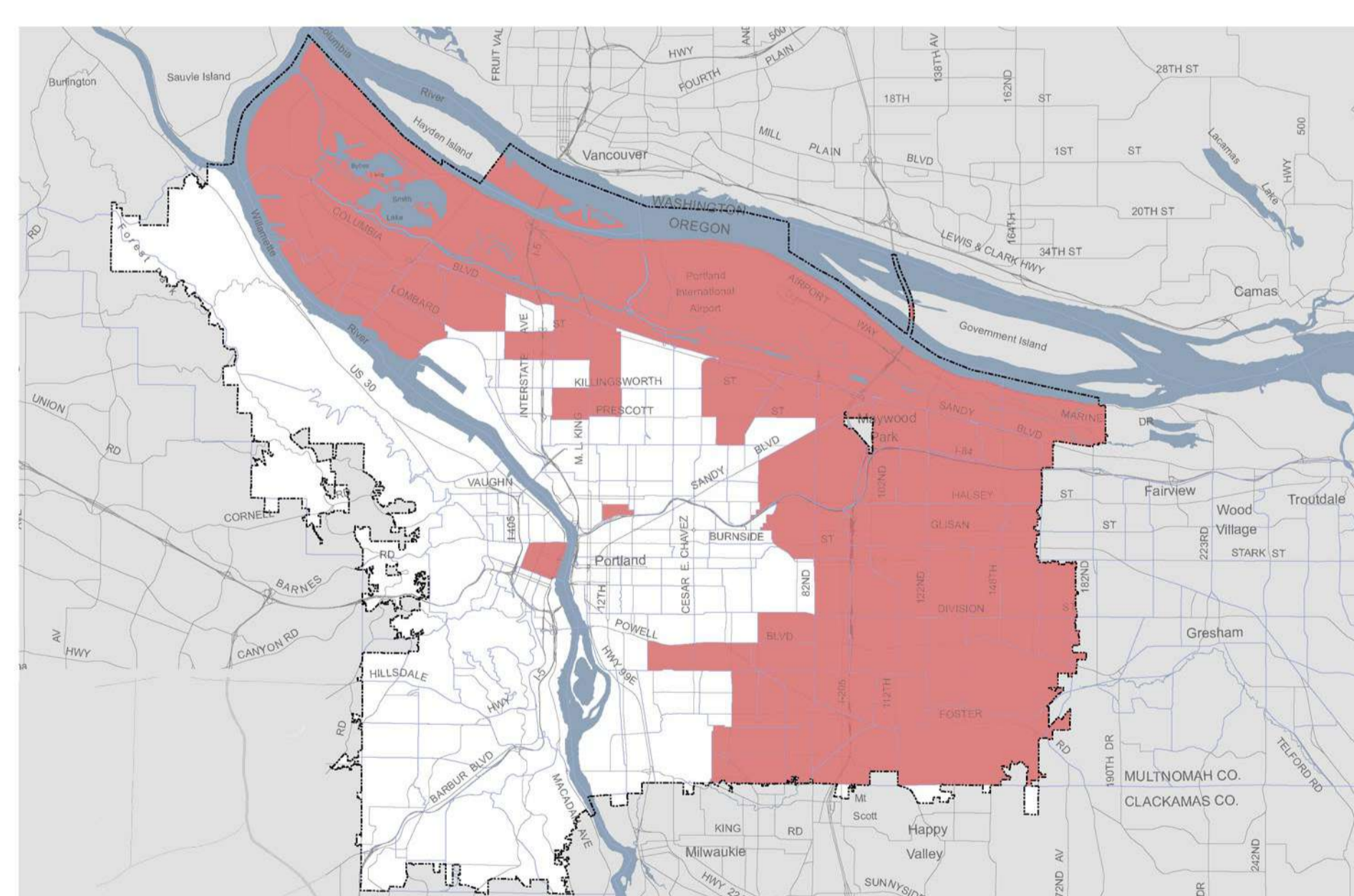
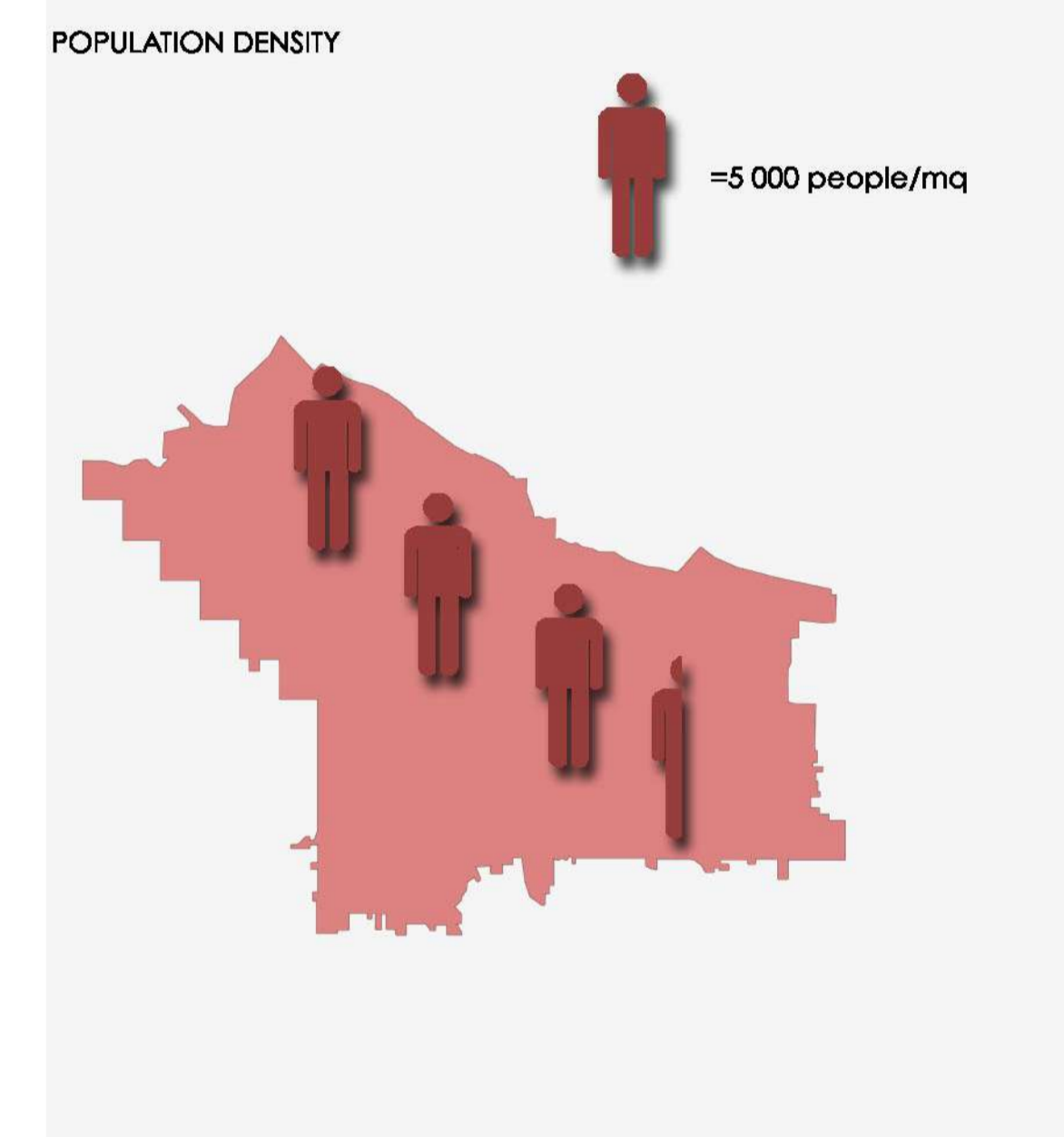


VULNERABILITY RISK FACTOR B: EDUCATION ATTAINMENT

LEGEND

- City Boundary
- Population age 25+ without bachelor's degree >56.3%

DATA SOURCES:
1-2008-2012 American Community survey
2-U.S. Dept. of Housing and Urban Development CHAS Data, 2007-2011

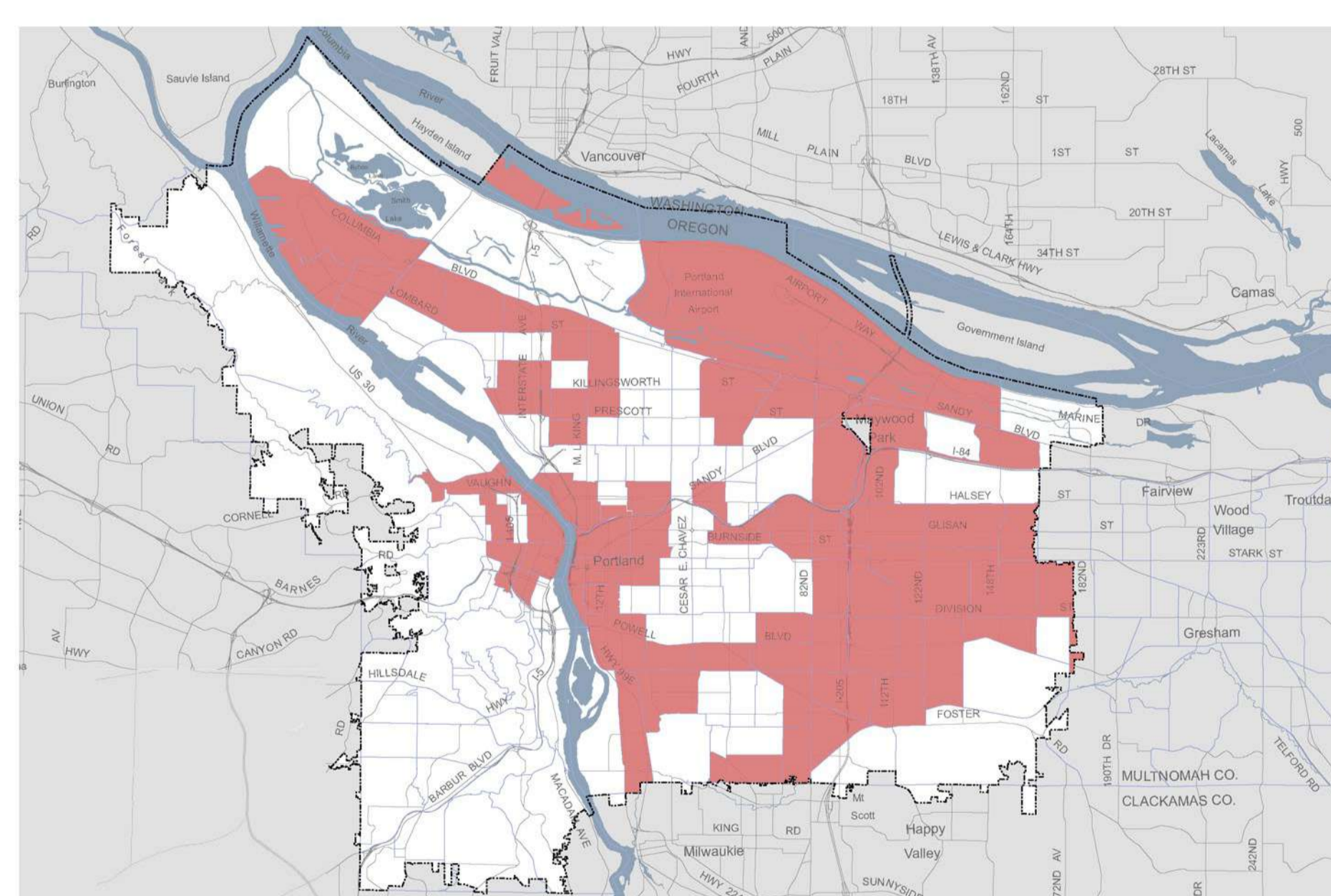


VULNERABILITY RISK FACTOR C: LOW INCOME

LEGEND

- City Boundary
- Households at or below 80% MFI >43.7%

DATA SOURCES:
1-2008-2012 American Community survey
2-U.S. Dept. of Housing and Urban Development CHAS Data, 2007-2011

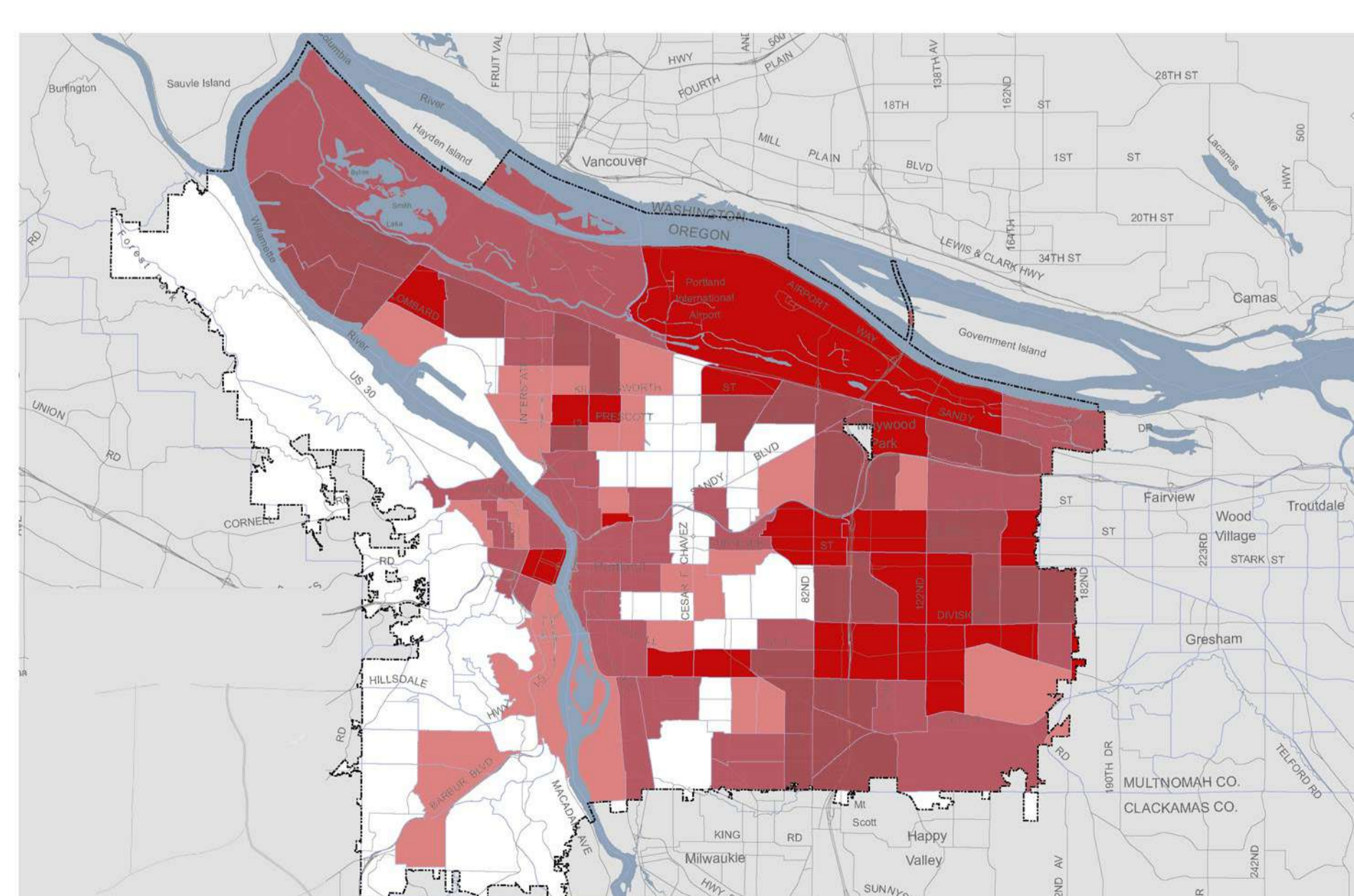
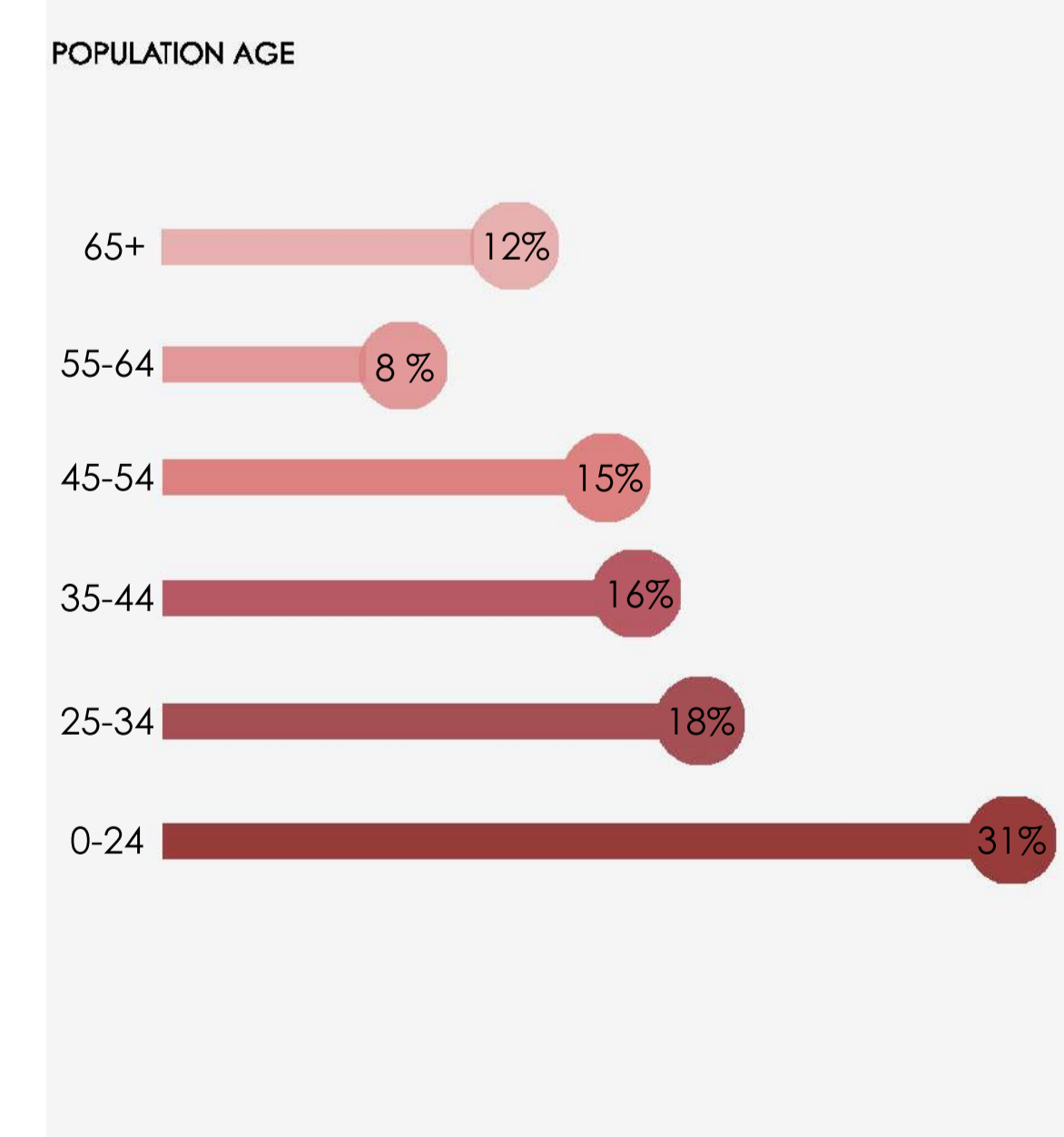


VULNERABILITY RISK FACTOR D: ELDERS

LEGEND

- City Boundary
- Population 65+ years old > 10%

DATA SOURCES:
1-2008-2012 American Community survey
2-U.S. Dept. of Housing and Urban Development CHAS Data, 2007-2011

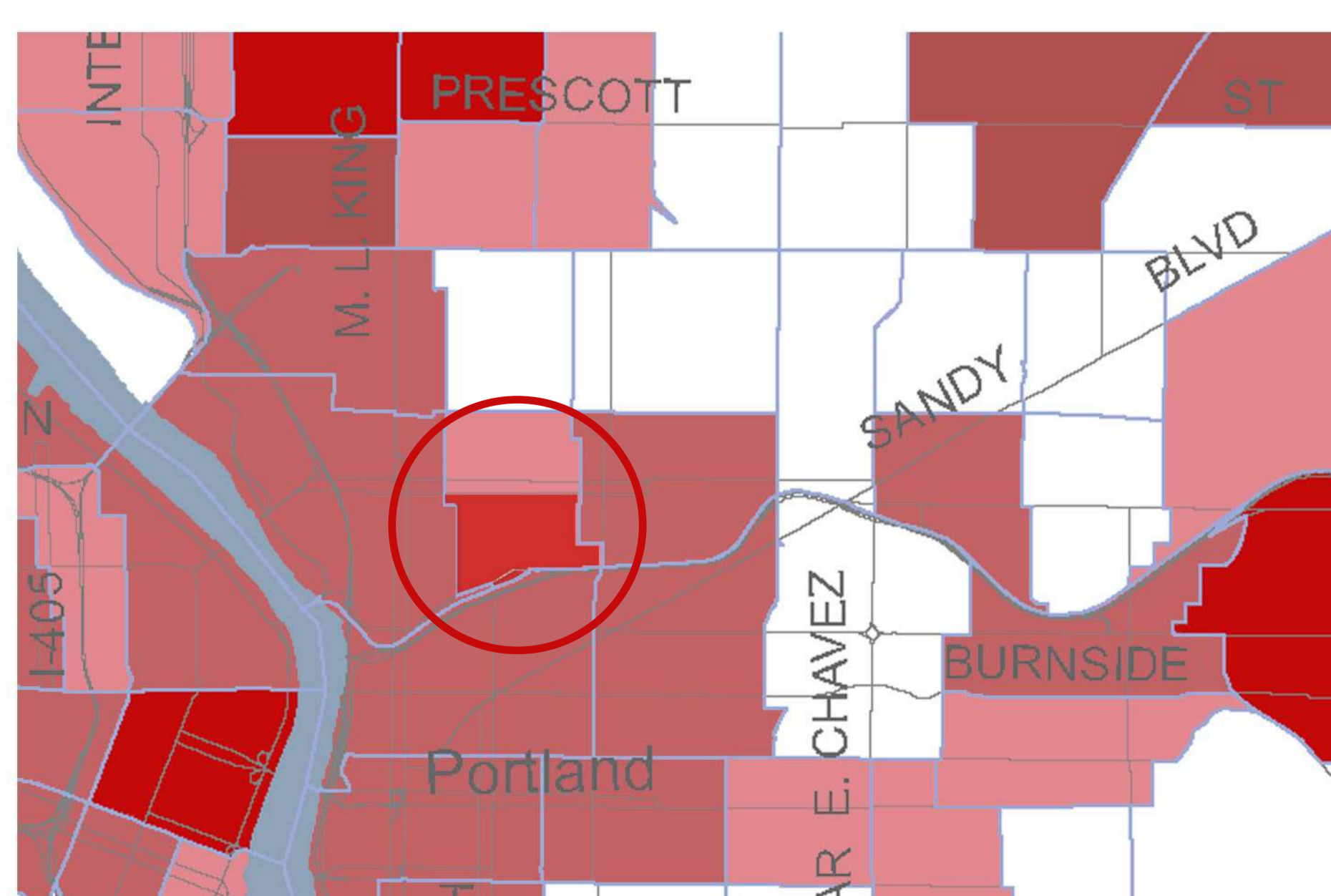


TOTAL VULNERABILITY LEVEL

LEGEND

- City Boundary
- Level 1
- Level 2
- Level 3
- Level 4

DATA SOURCES:
1-2008-2012 American Community survey
2-U.S. Dept. of Housing and Urban Development CHAS Data, 2007-2011



SULLIVAN'S GULCH

The district is located in zone 2 and has a high level of vulnerability

DATA SOURCES:
1-2008-2012 American Community survey
2-U.S. Dept. of Housing and Urban Development CHAS Data, 2007-2011

