

ALMA MATER STUDIORUM
UNIVERSITA' DI BOLOGNA

SCUOLA DI SCIENZE

Corso di laurea magistrale in BIOLOGIA MARINA

ALLEGATO 1b

Tesi di laurea in Adattamenti degli animali all'ambiente marino

Relatore

Prof.ssa Elena Fabbri

Correlatore

Prof. José Antonio Muñoz-Cueto

Correlatore

Dott.ssa Mairi Elizabeth Cowan

Presentata da

Luca Marisaldi

Il sessione

Anno Accademico 2015/2016

CONTENTS

| | |
|---------------------------------------|---|
| 1. APPENDIX 1 | 1 |
| 1.1. EXPERIMENTAL SETUP AND SURGERIES | 1 |
| 1.1.2. Surgery | 1 |

1. APPENDIX 1

1.1. EXPERIMENTAL SETUP AND SURGERIES

1.1.2. Surgery



Figure 4. Pre-surgery setup in which samples were anesthetized by irrigating gills with anaesthetic



Figure 5. Once melatonin implants were inserted stitches were applied

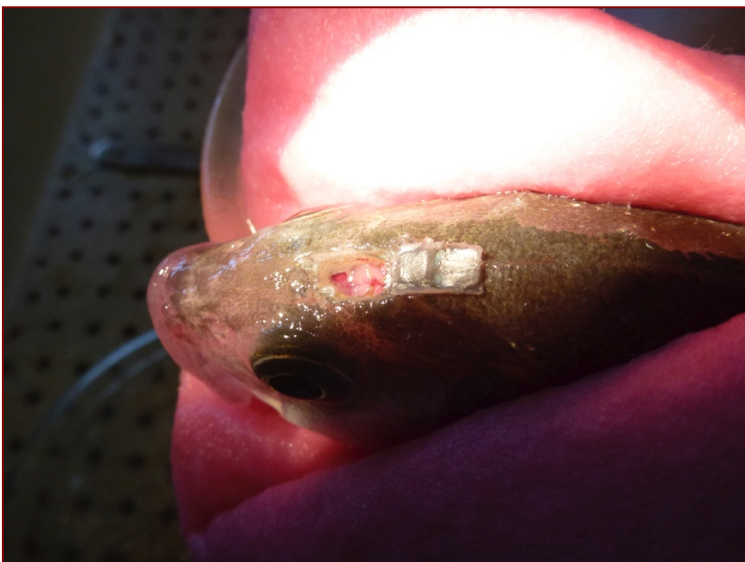


Figure 6. Removal of the pineal organ after aspiration of surrounding fat

