

**ALMA MATER STUDIORUM
UNIVERSITÀ DI BOLOGNA**

**DIPARTIMENTO DI INGEGNERIA, CIVILE, CHIMICA,
AMBIENTALE E DEI MATERIALI**

CORSO DI LAUREA MAGISTRALE in INGEGNERIA CIVILE

TESI DI LAUREA

in

Progetti di Strutture M

**VALUTAZIONE DELLA VULNERABILITÀ STRUTTURALE DEL
SERBATOIO PENSILE A SANT'ILARIO D'ENZA (RE)**

ALLEGATO

CANDIDATO

Fabbiani Ginevra

RELATORE:

Chiar.mo Prof. Ing. Marco Savoia

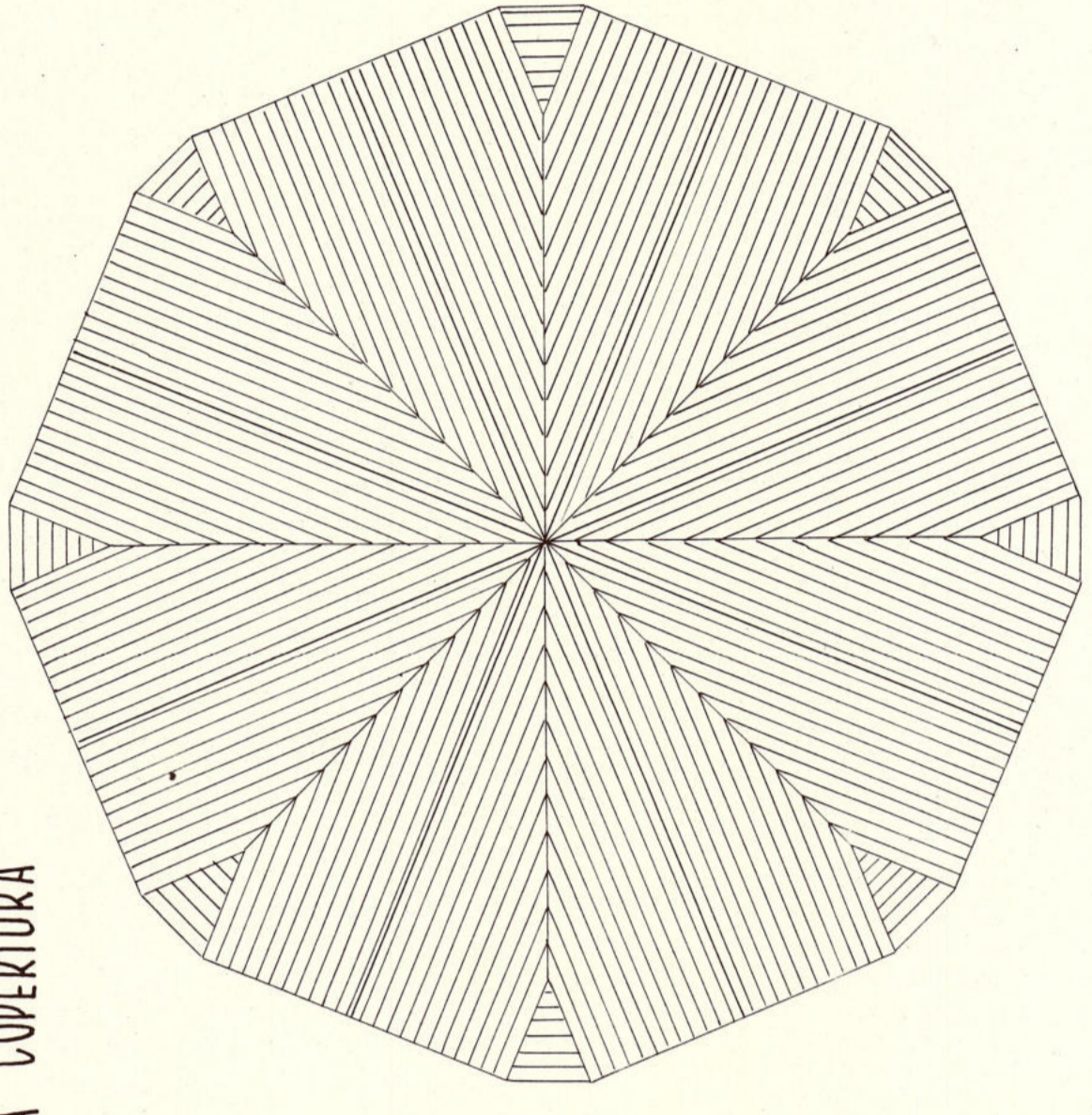
Anno Accademico 2025/2026

Sessione III

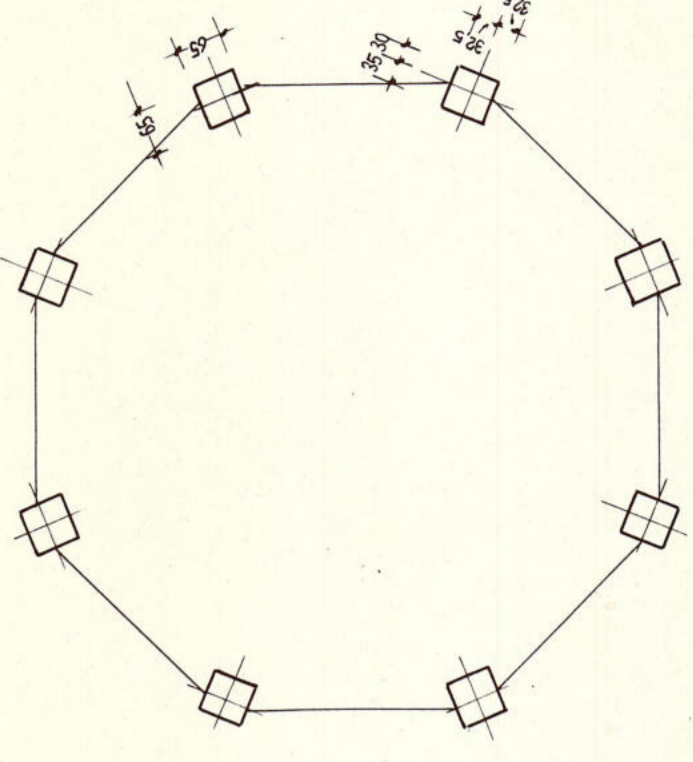
INDICE

1. ELABORATI GRAFICI DI PROGETTO **Errore. Il segnalibro non è definito.**

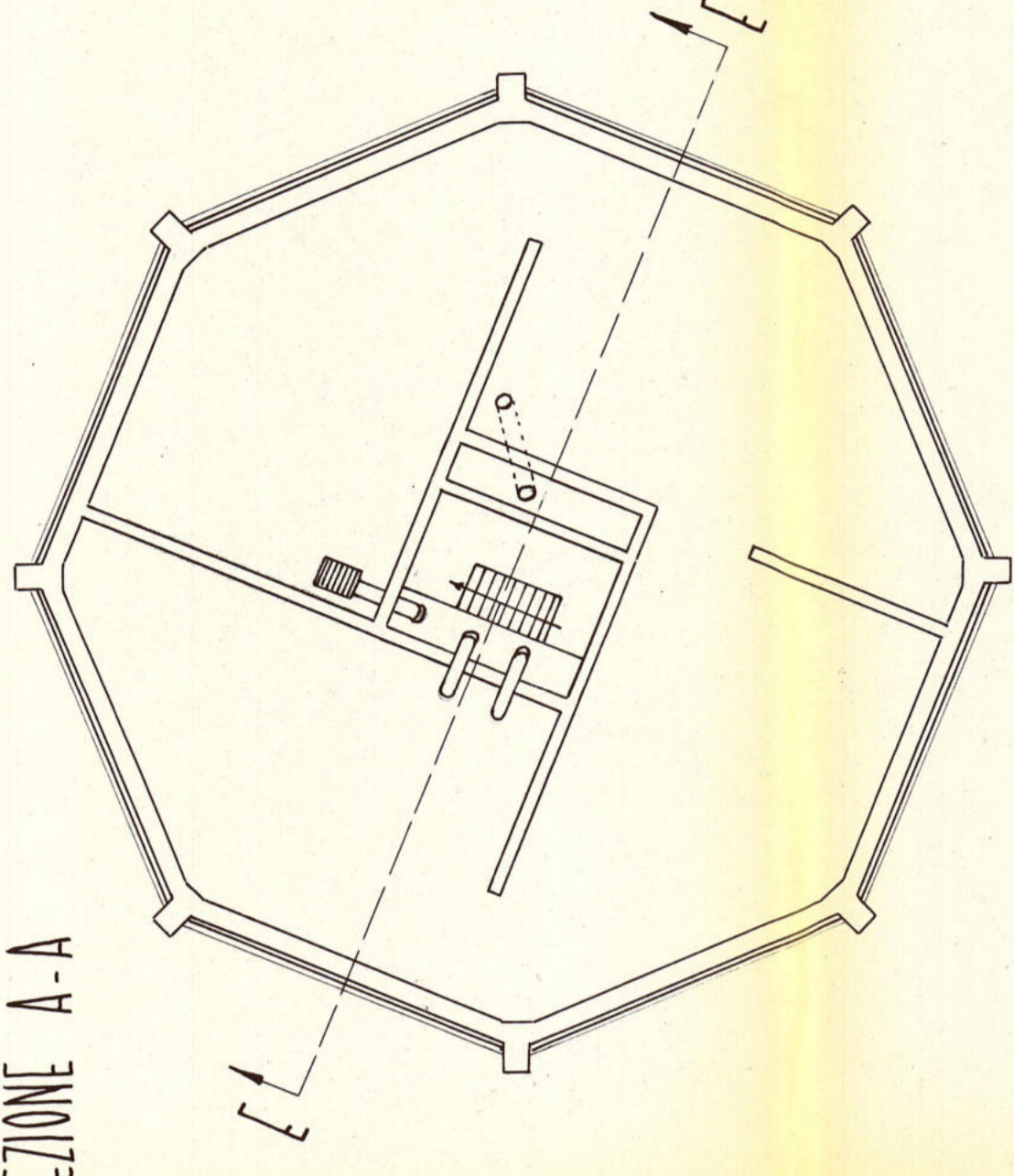
PIANTA COPERTURA



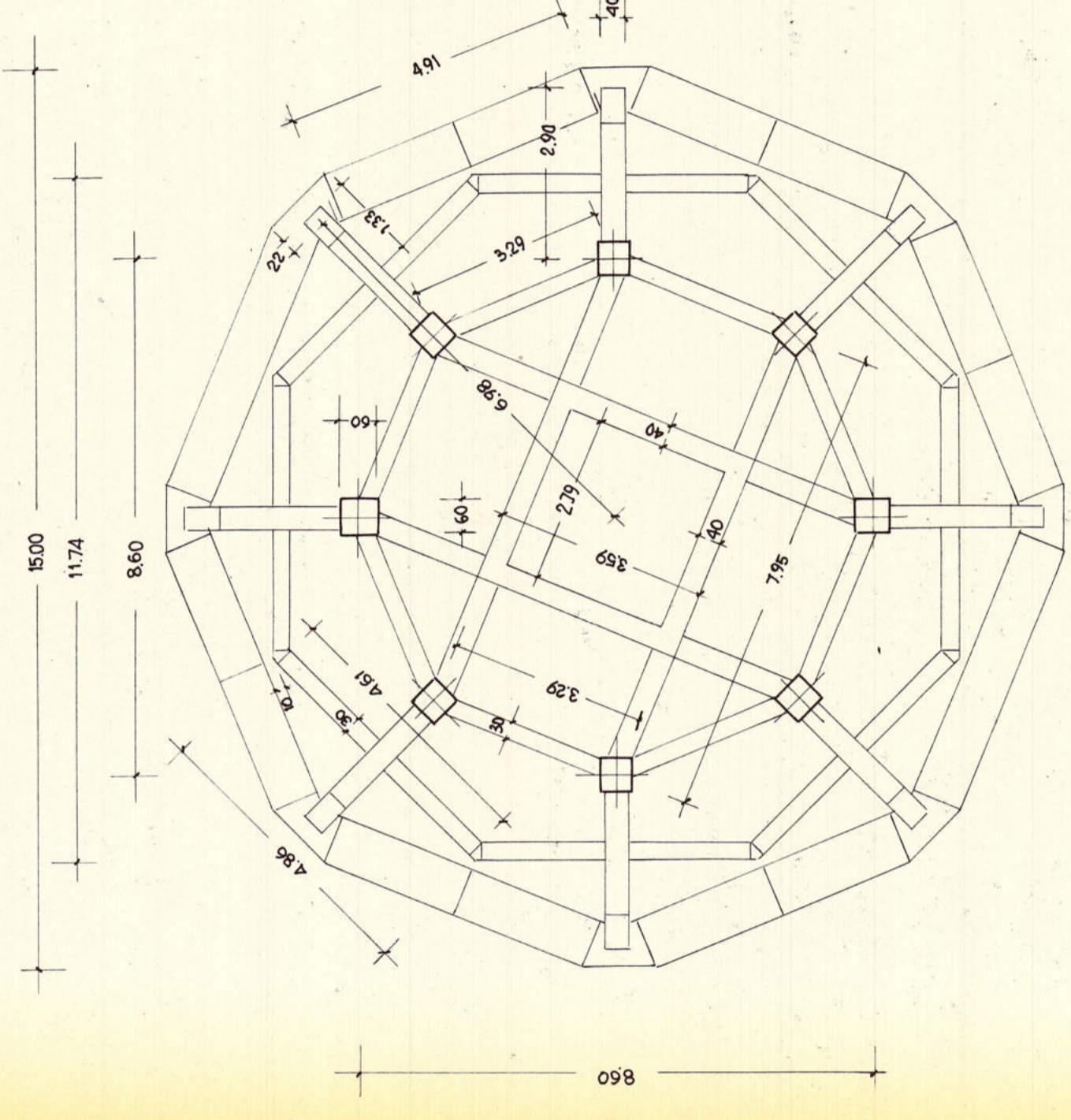
SEZIONE C-C



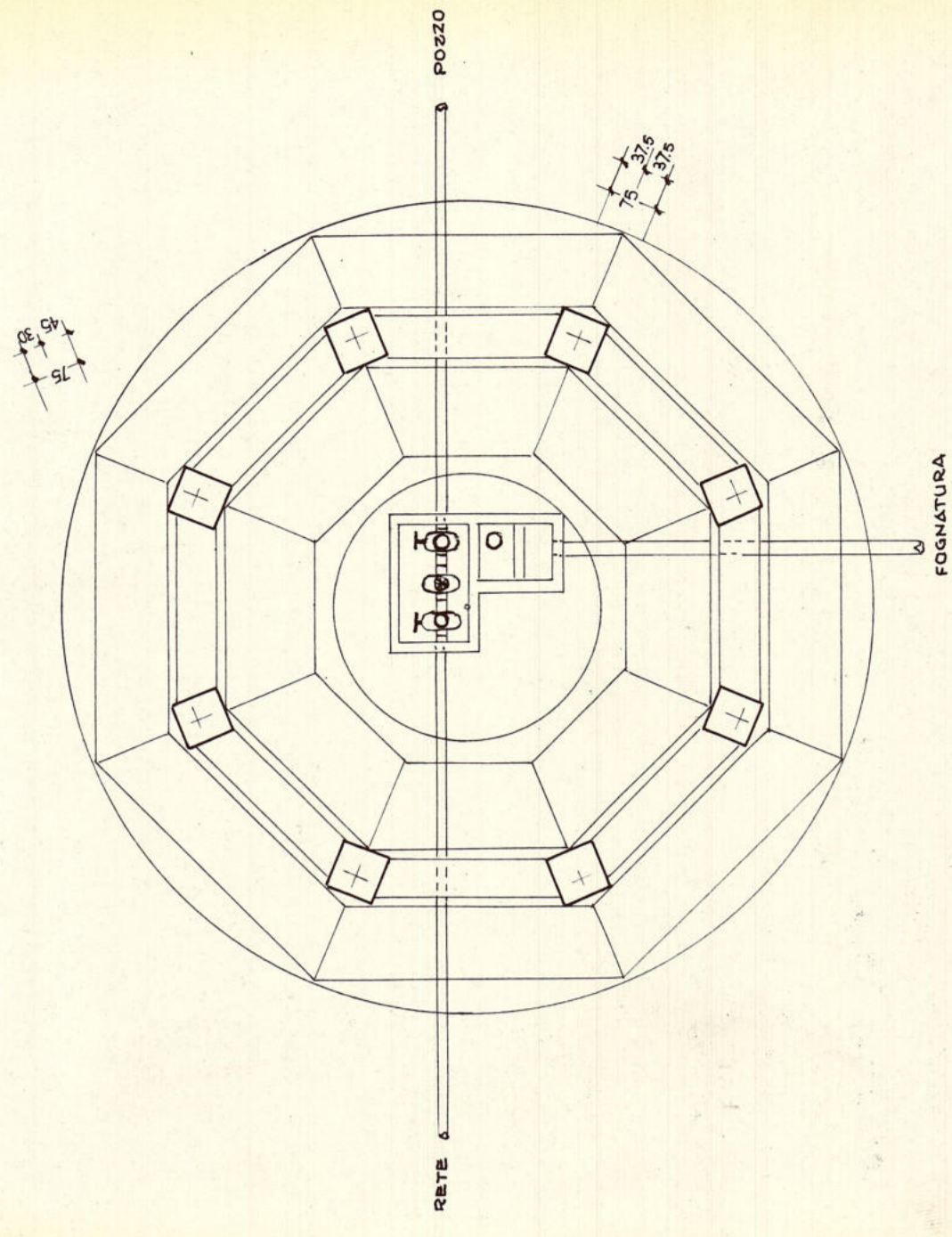
SEZIONE A-A



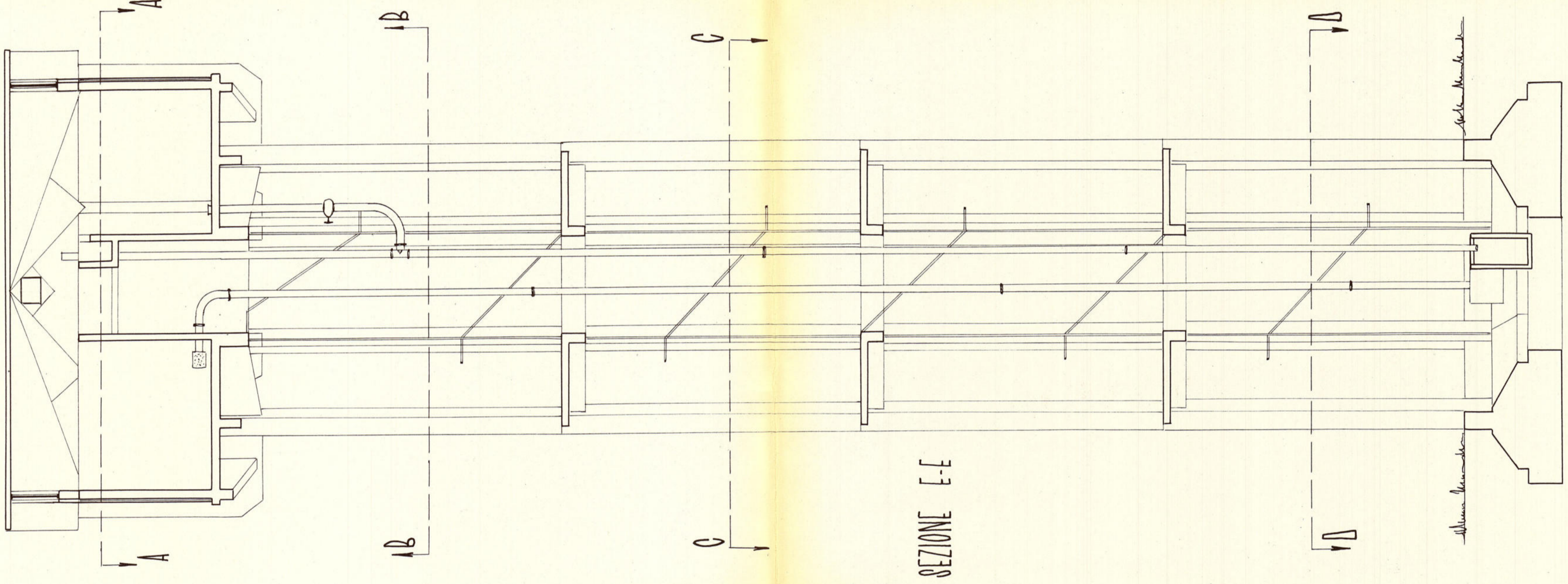
SEZIONE B-B



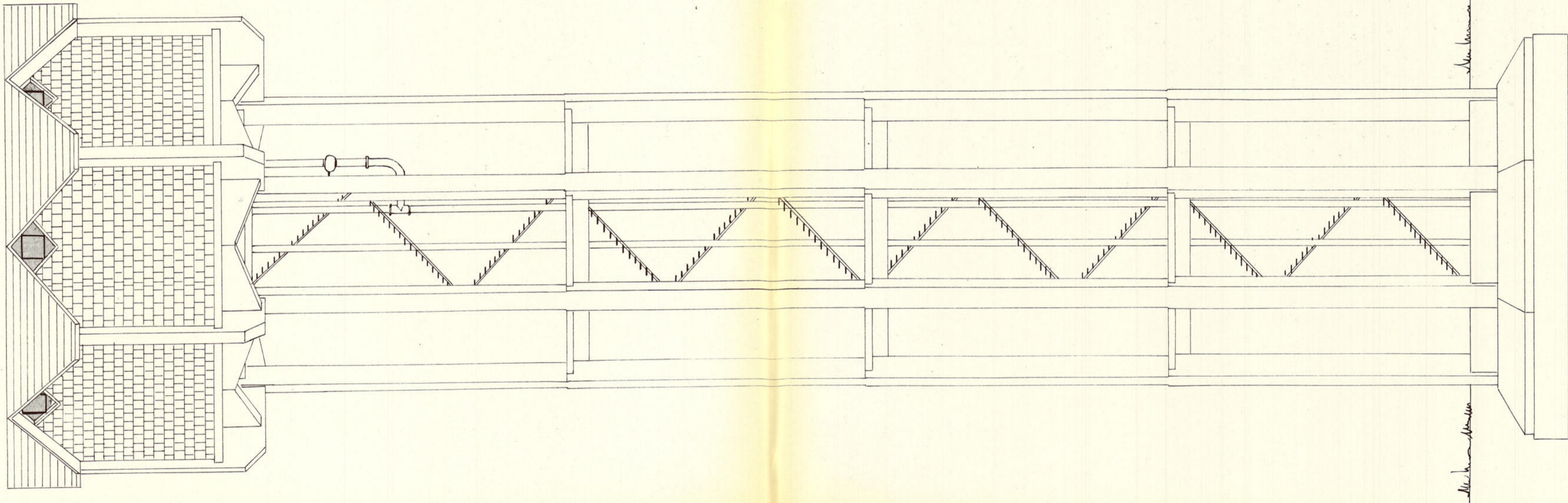
SEZIONE D-D



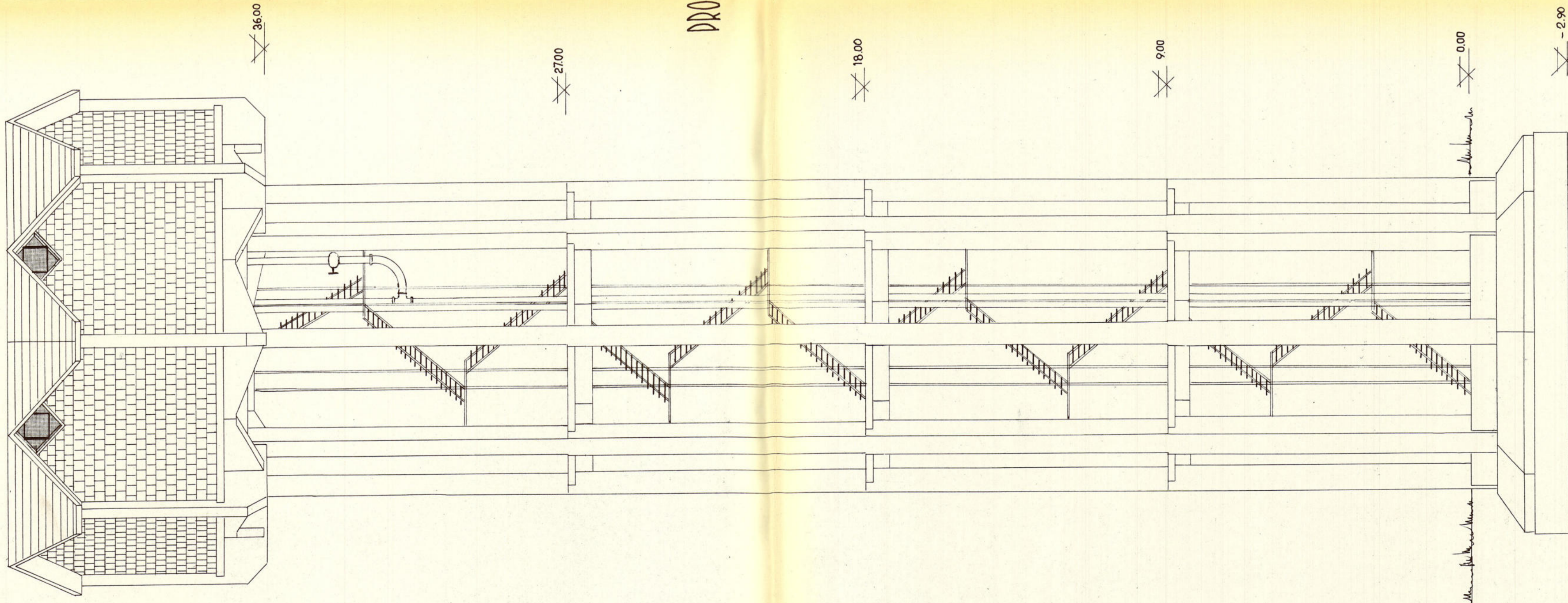
CUPOLA



SEZIONE E-E



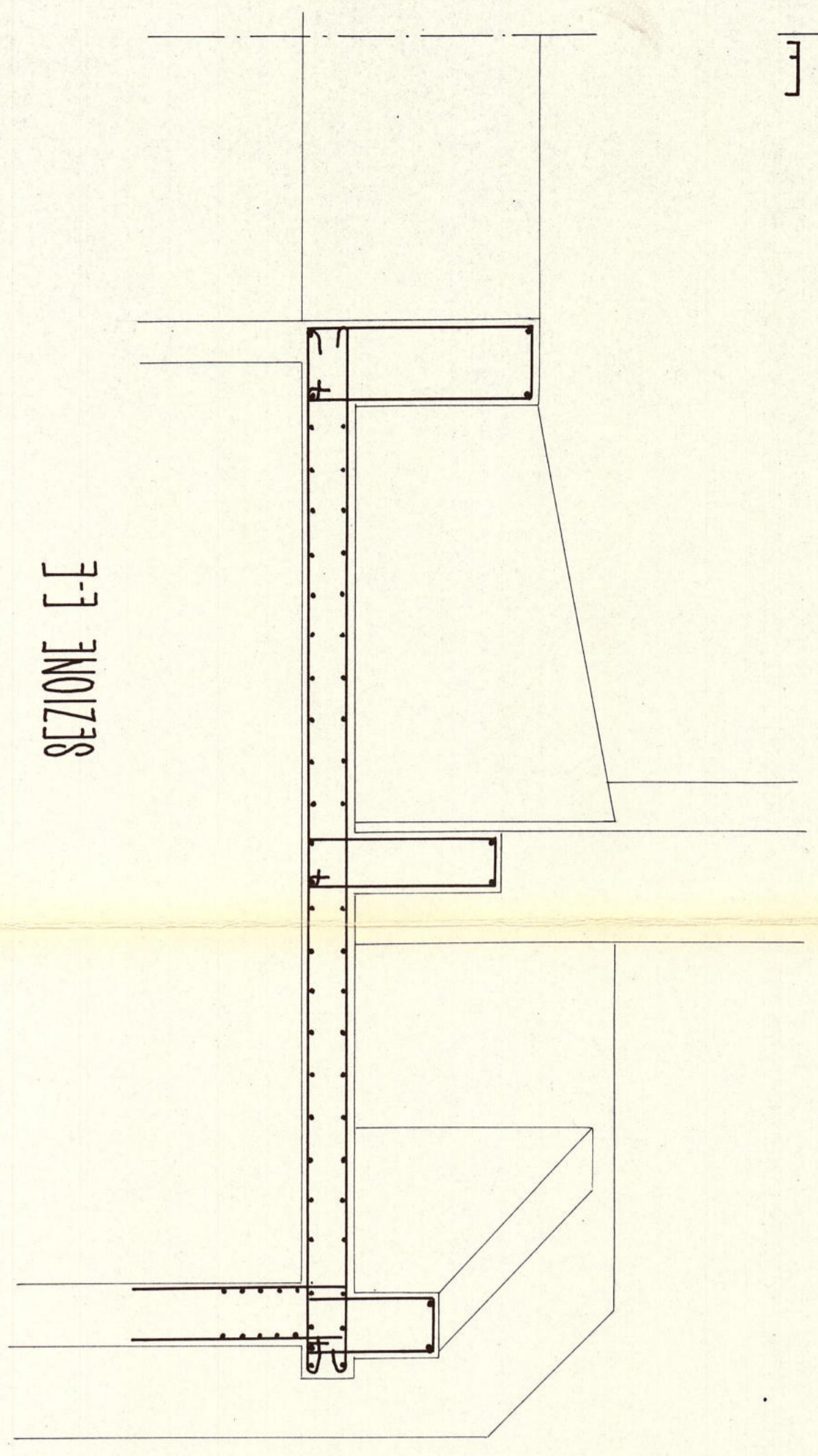
PROSPETTI



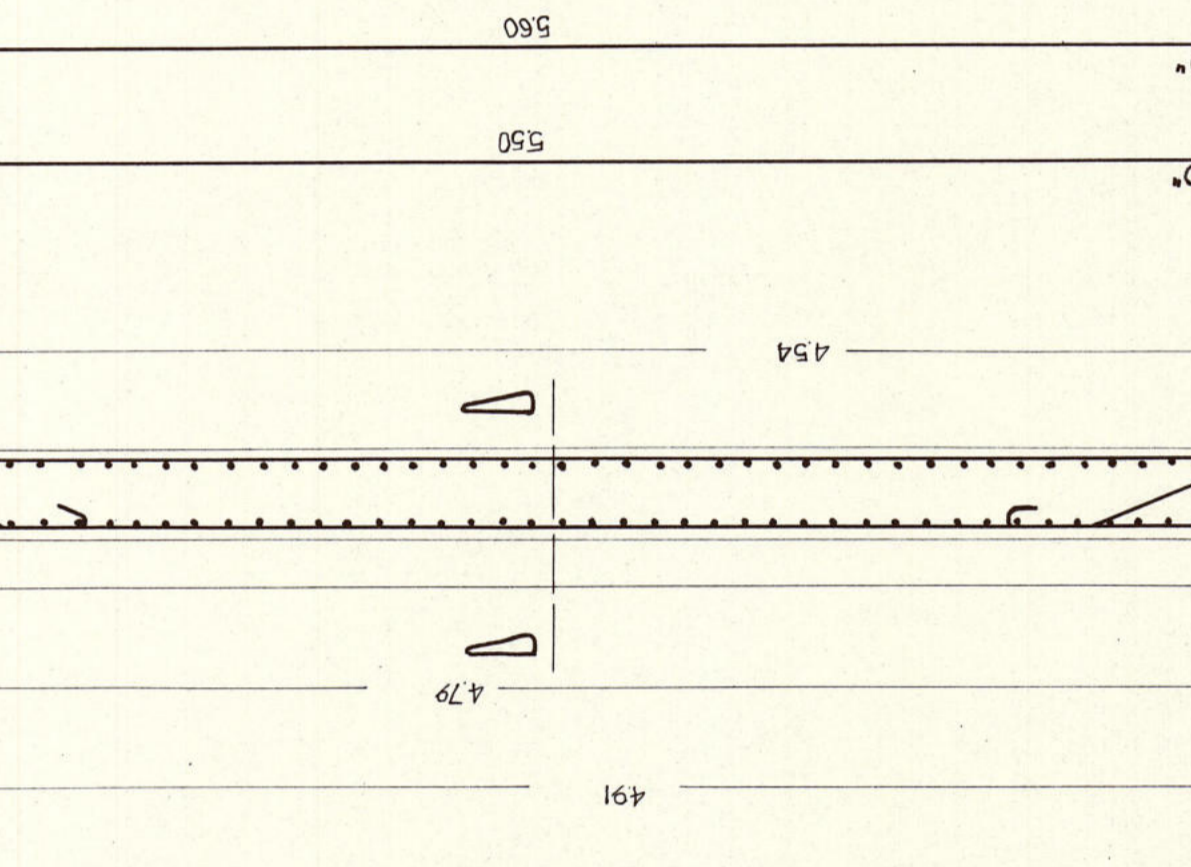
STUDIO TECNICO
 DOTT. ING. GIORGIO CALETTI
 PROVINCIA DI REGGIO EMILIA
 COMUNE DI SILARIO D'ENZA
 PROGETTO DI SERBATOIO PENSILE
 PER L'ACQUEDOTTO COMUNALE
 - PROSPETTI E SEZIONI
 1:100 27 LUG. 1954

2

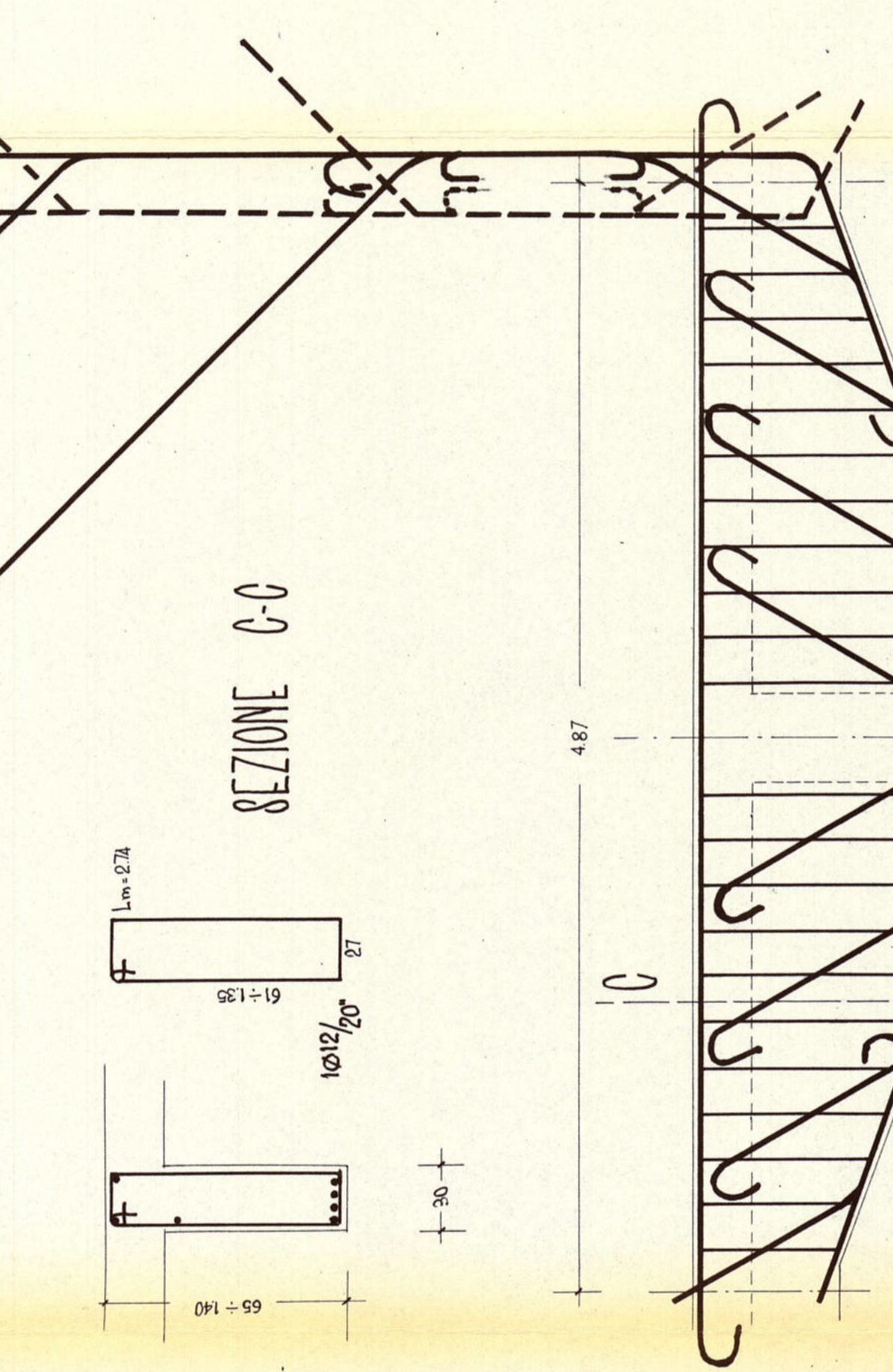
SEZIONE E-E



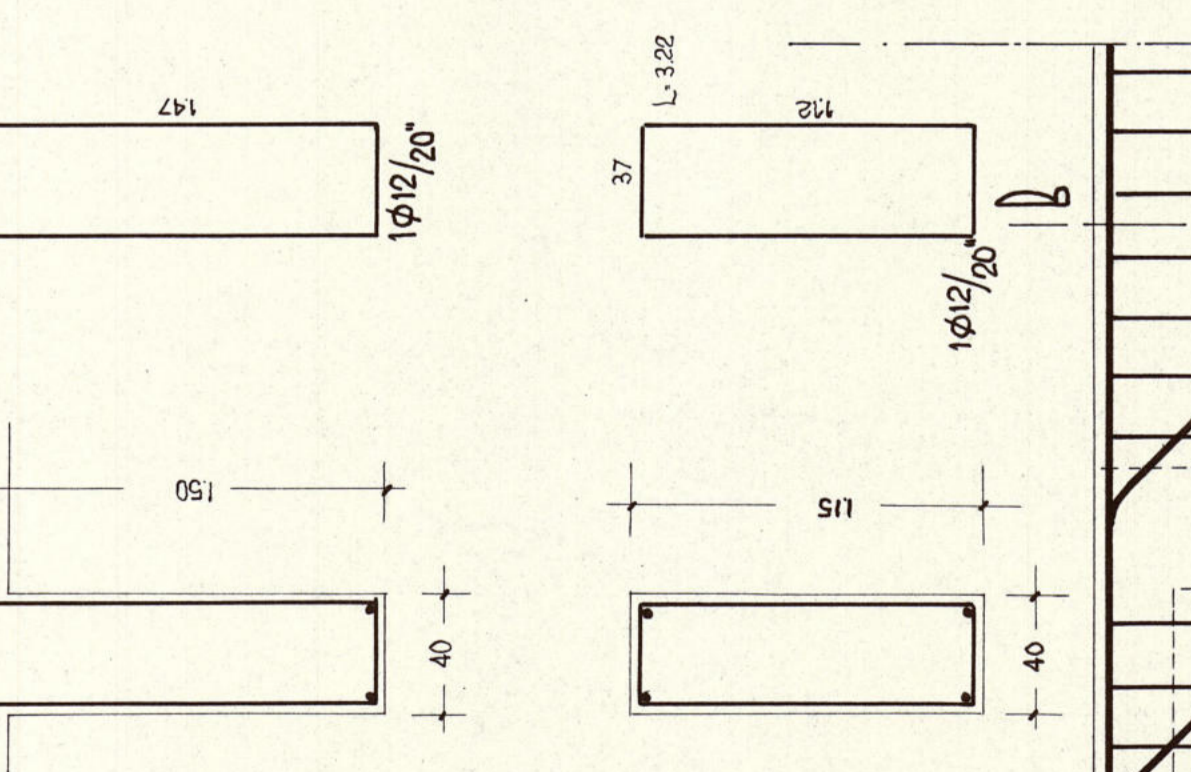
PIANTA



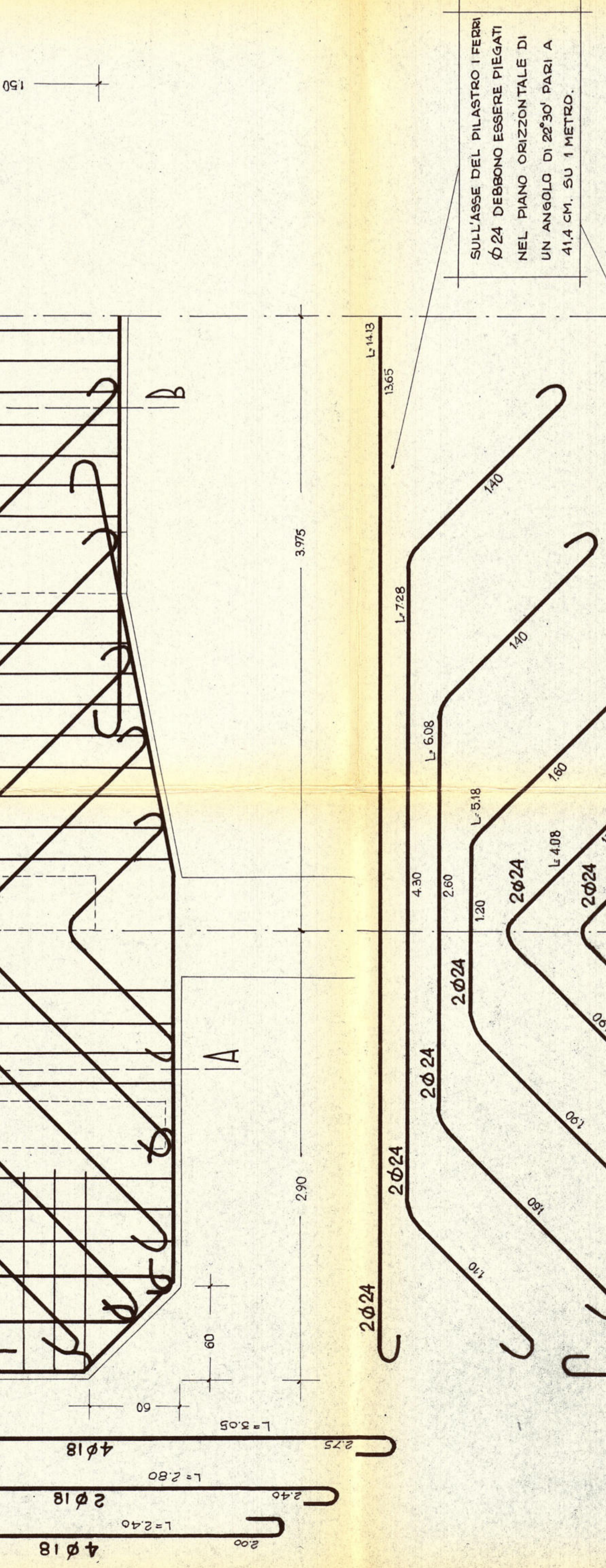
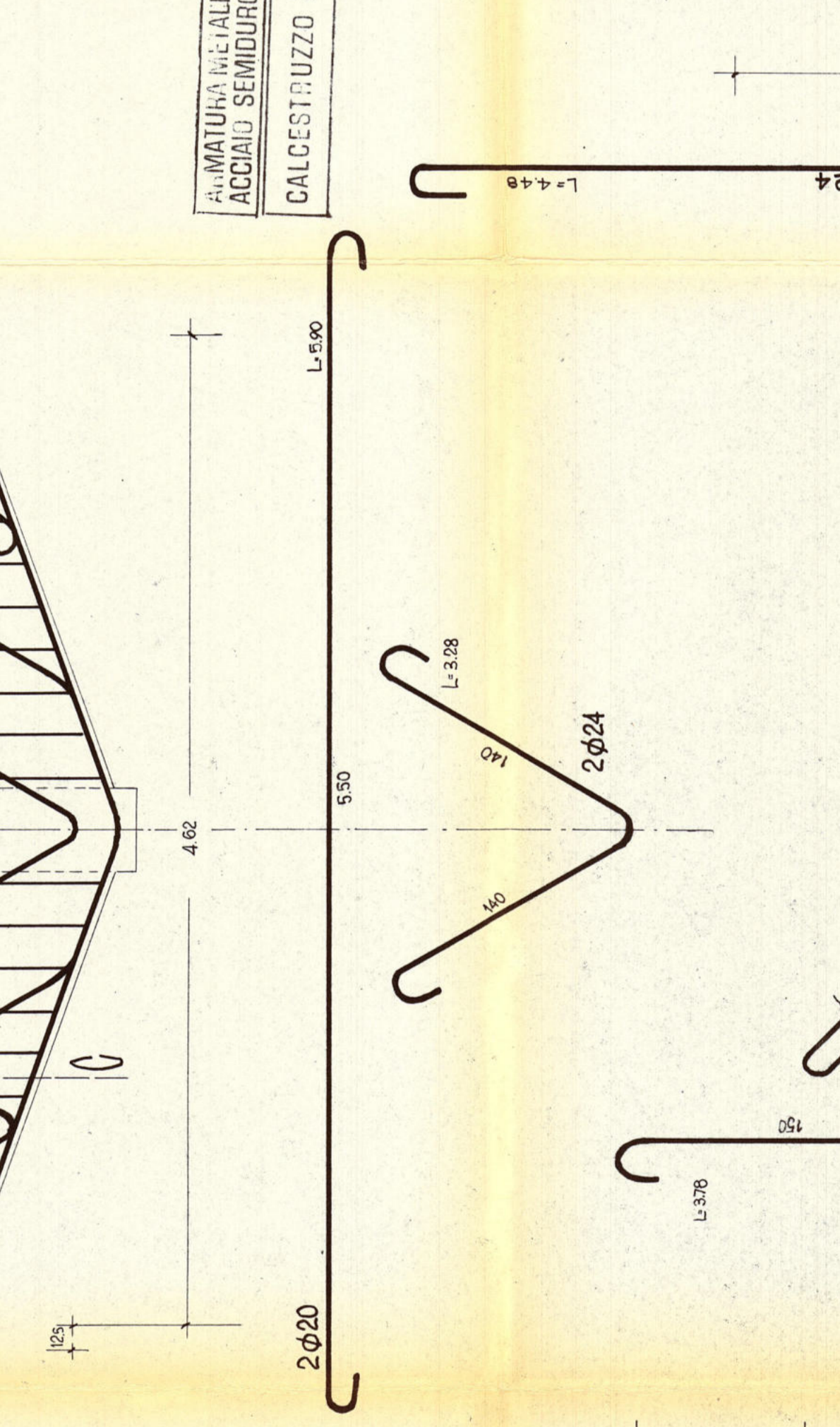
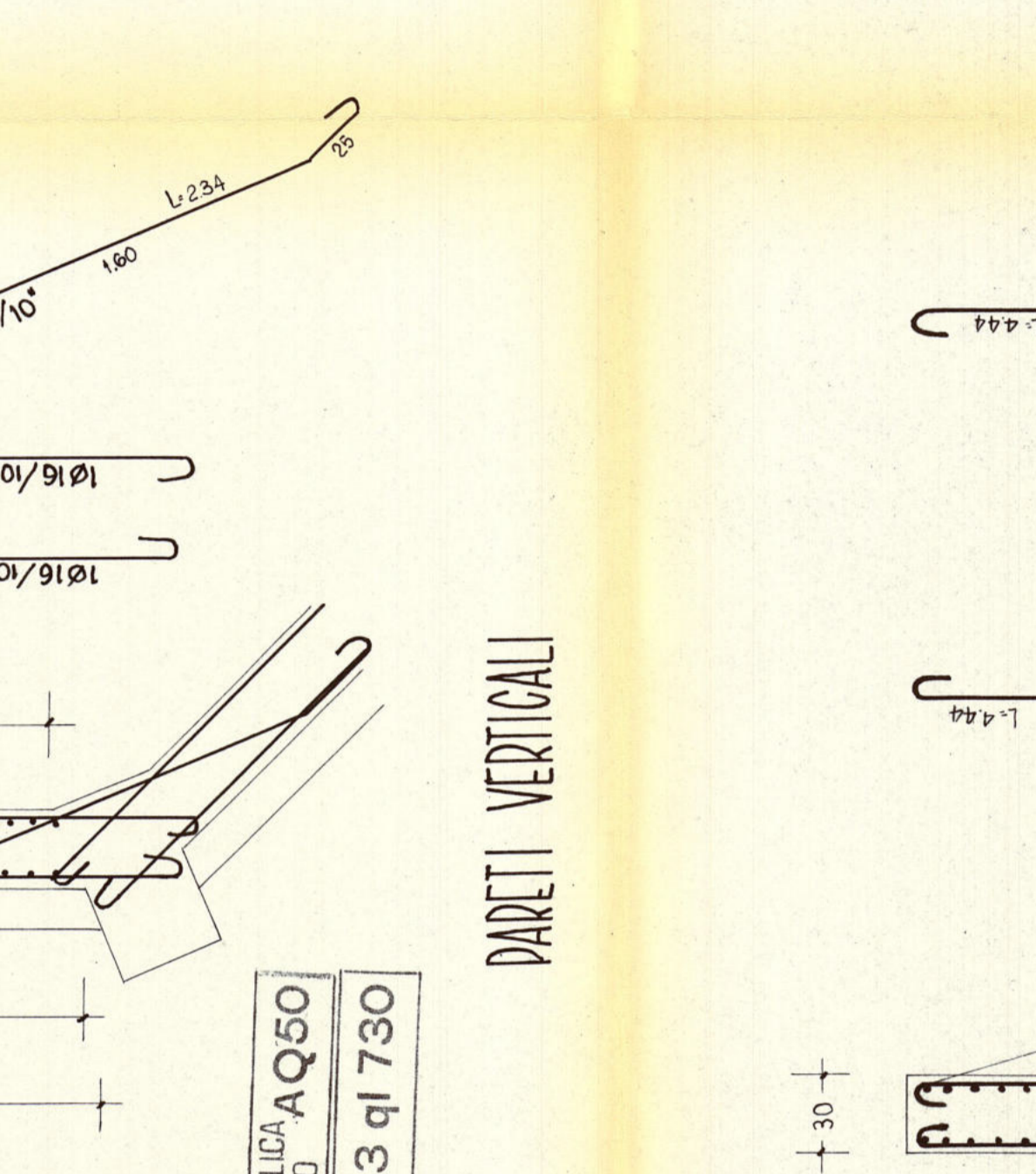
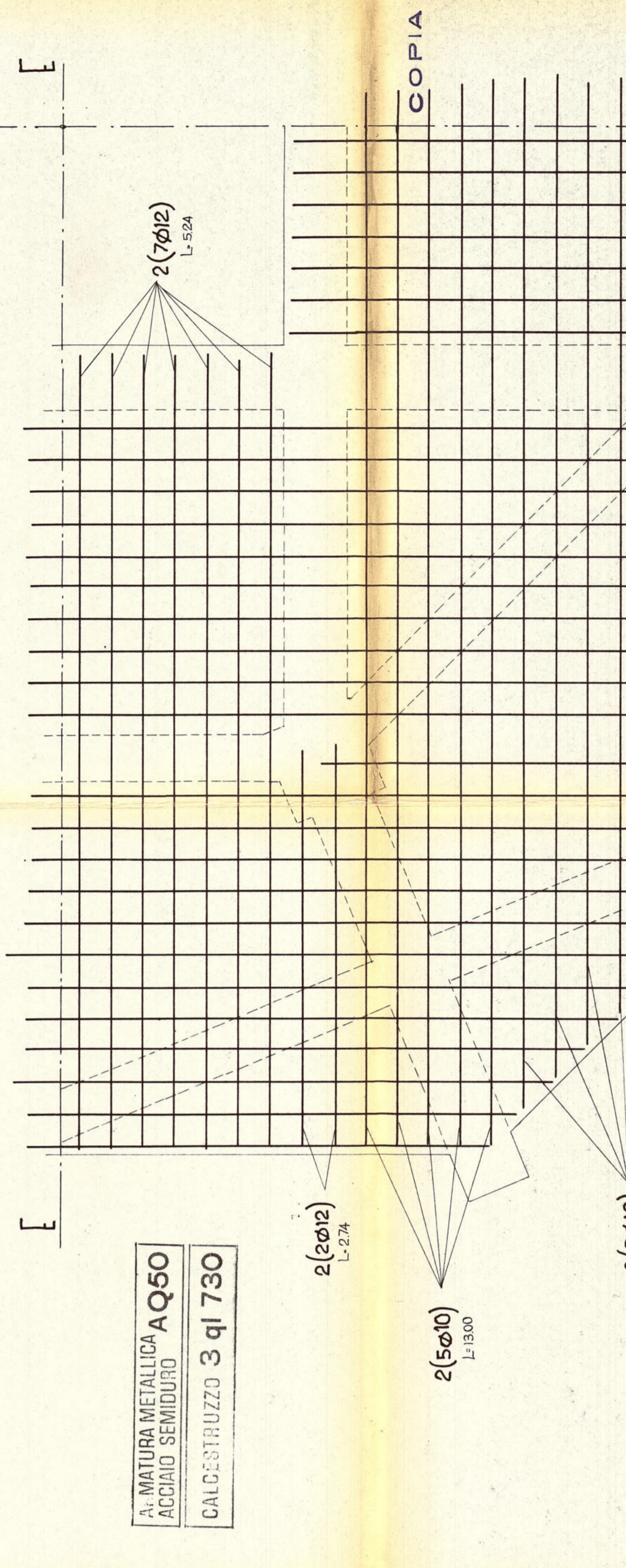
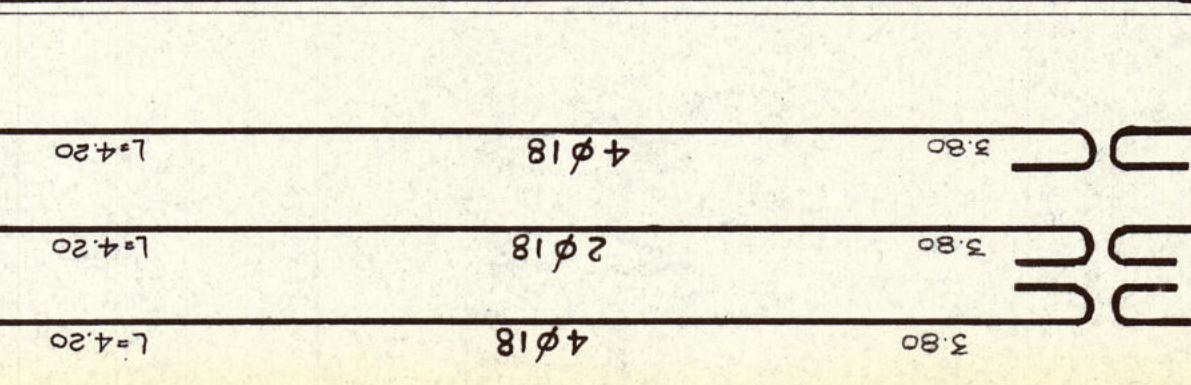
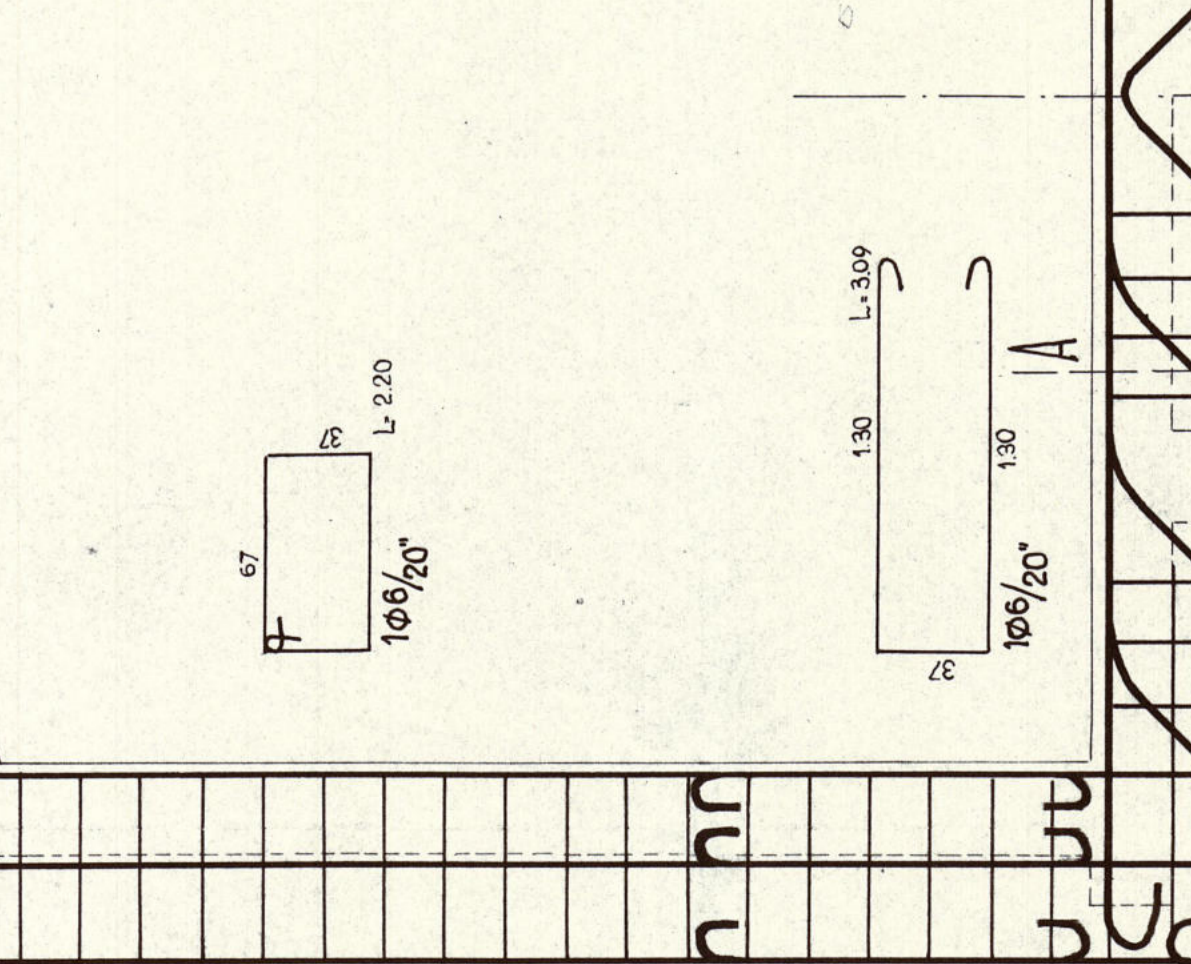
SEZIONE C-C



SEZIONE A-A

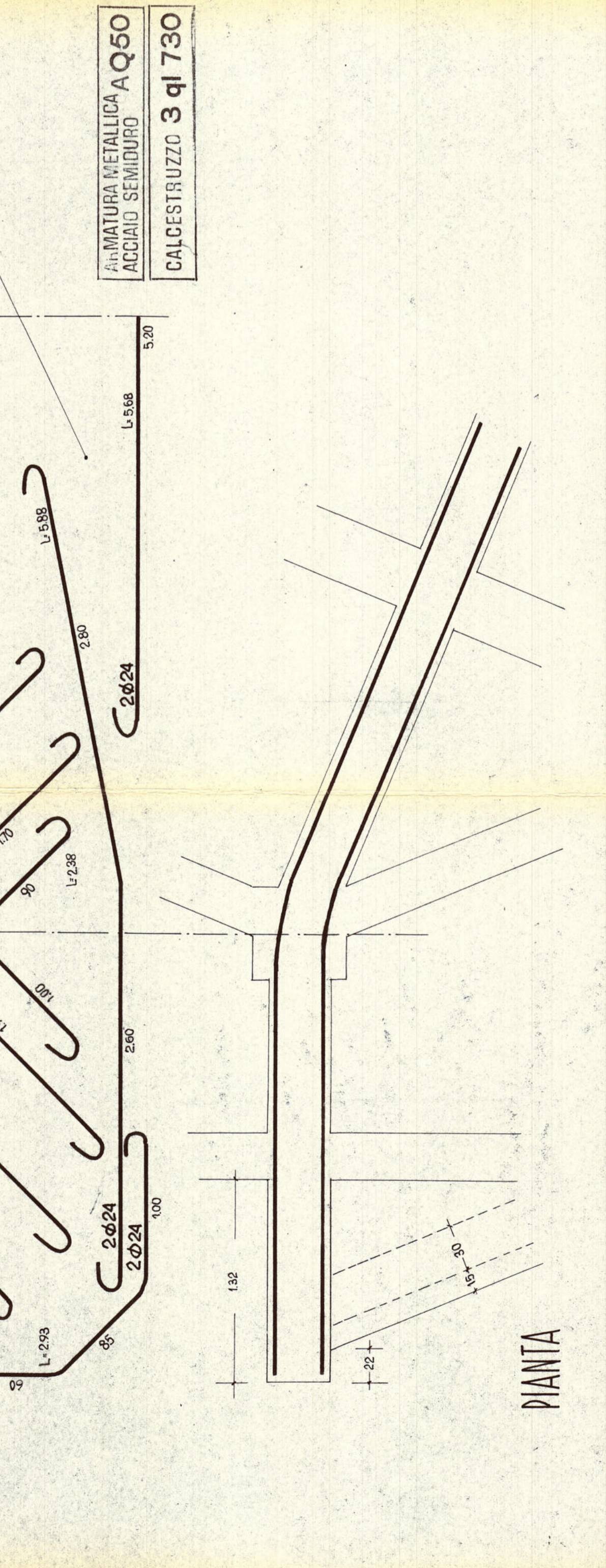
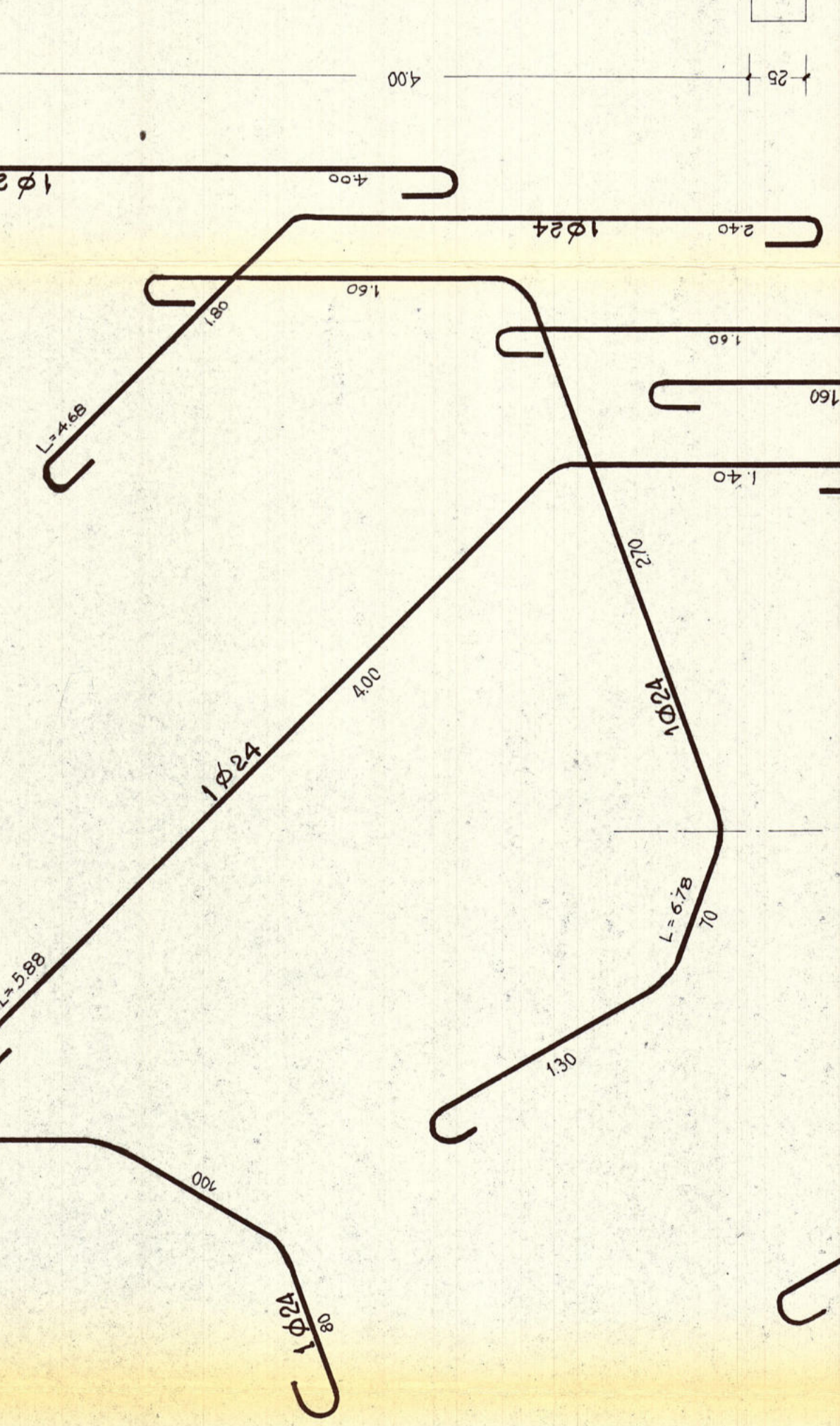
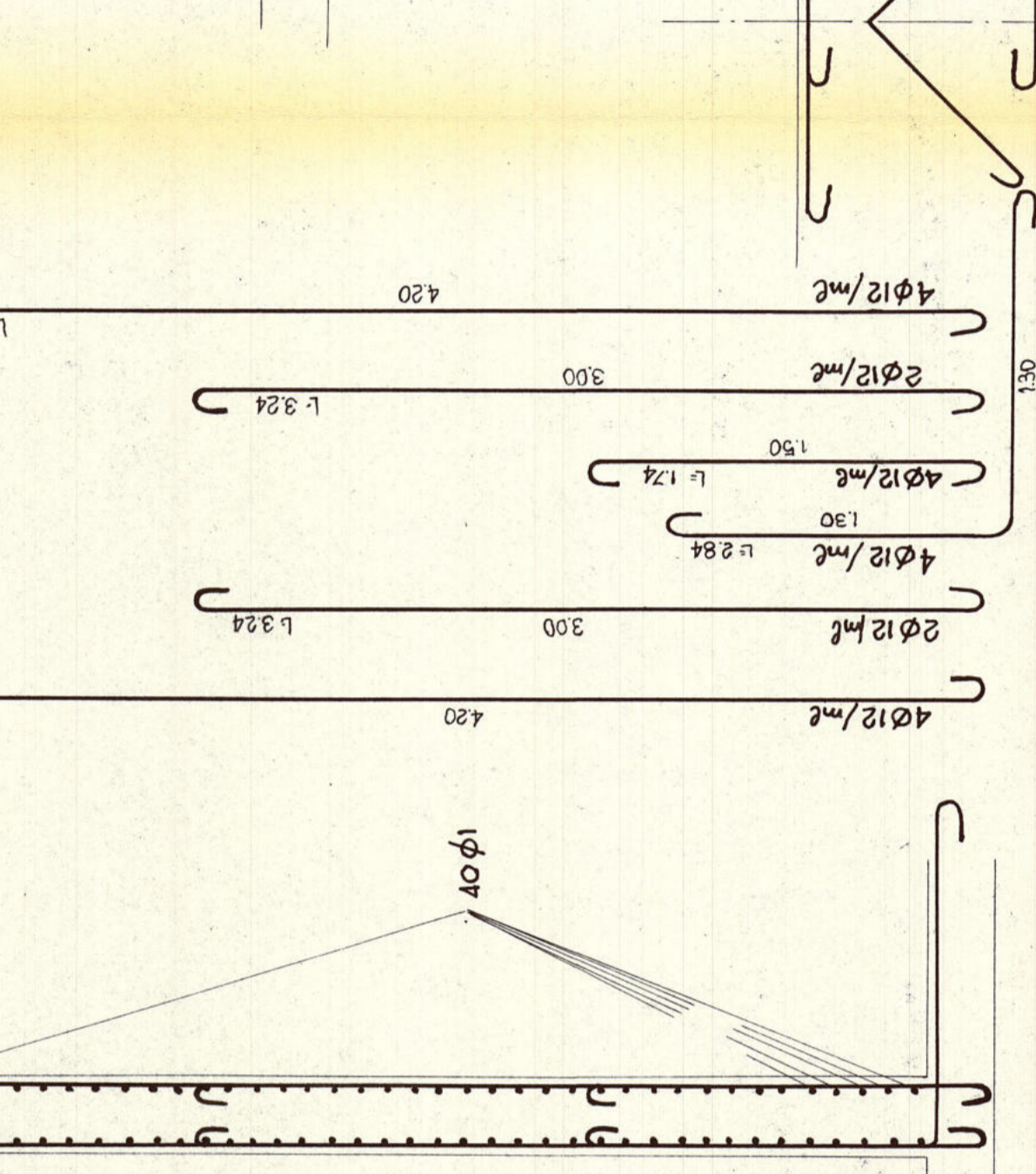


SEZIONE B-B



COPIA

SEZIONE F-F



STUDIO TECNICO
 DOT. ING. GIORGIO GALEOTTI
 PROVINCIA DI REGGIO EMILIA
 COMUNE DI S. ILARIO P. ENZA
 PROGETTO DI SERBATOIO FENILE
 PER L'ACQUEDOTTO COMUNALE
 -STRUTTURE- SERBATOIO
 1:25 27 LUG. 1964

4

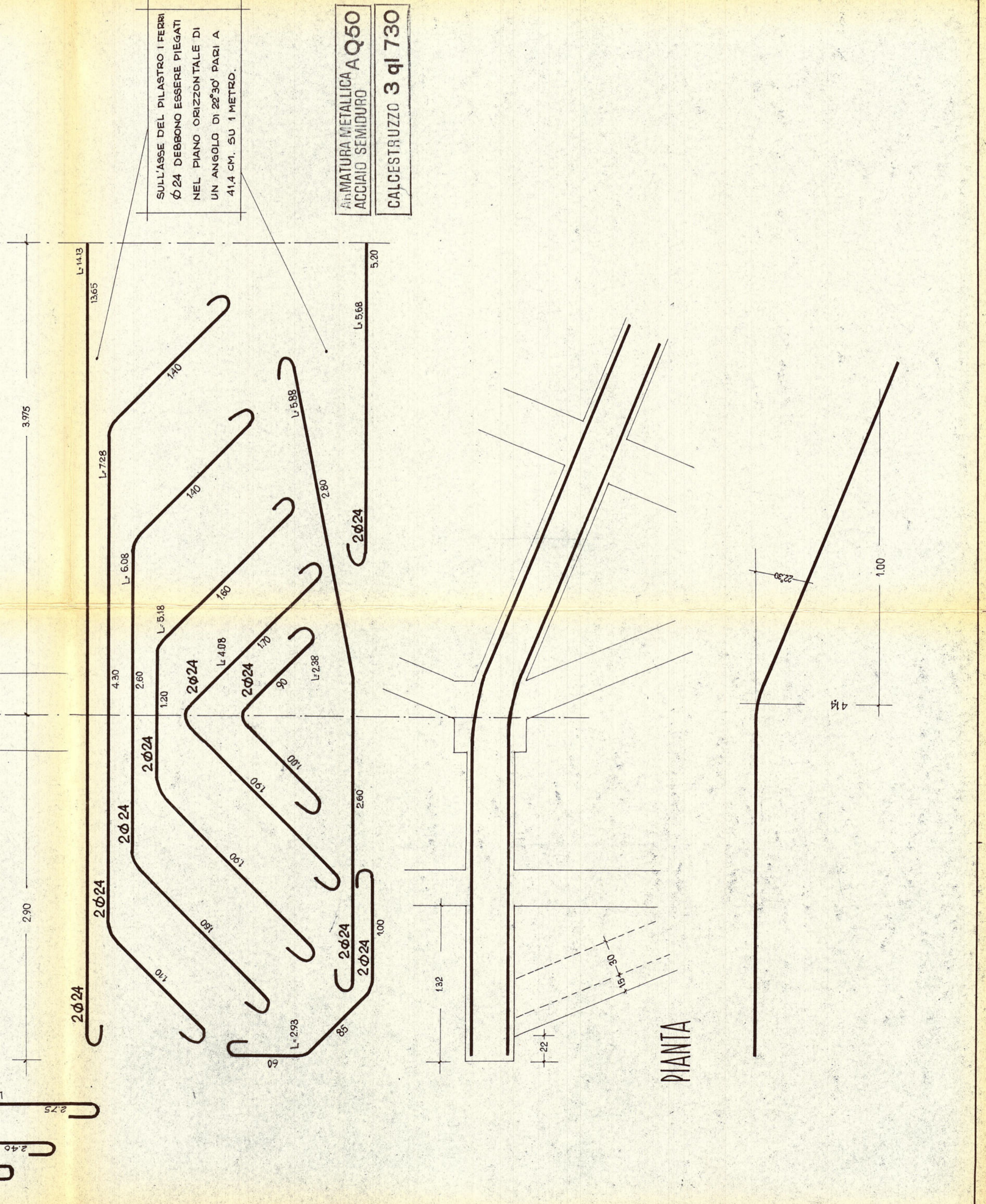
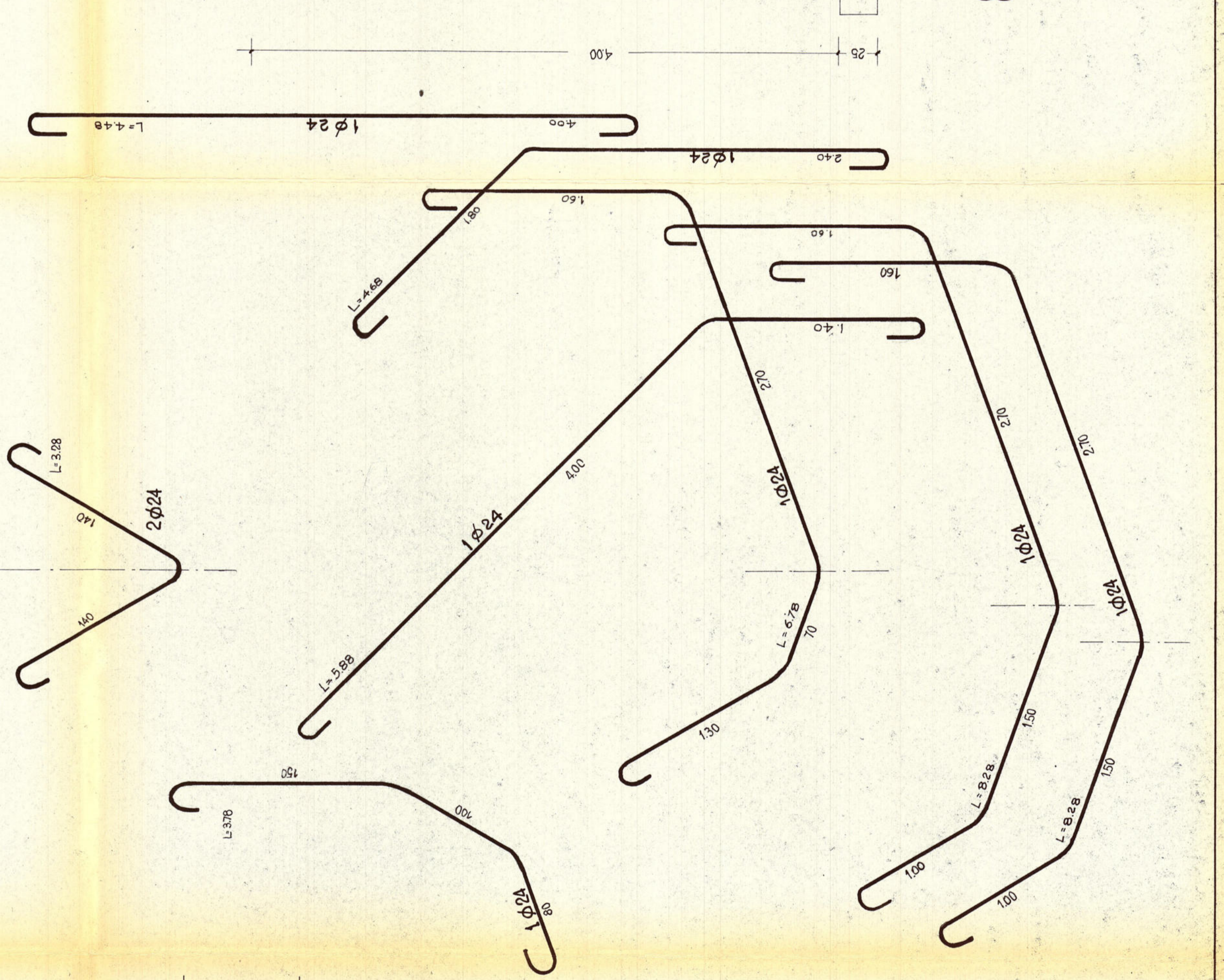
ARMATURA METALLICA A Q50
 ACCIAIO SEMIDURO
 CALCESTRUZZO 3 ql 730

ARMATURA METALLICA A Q50
 ACCIAIO SEMIDURO
 CALCESTRUZZO 3 ql 730

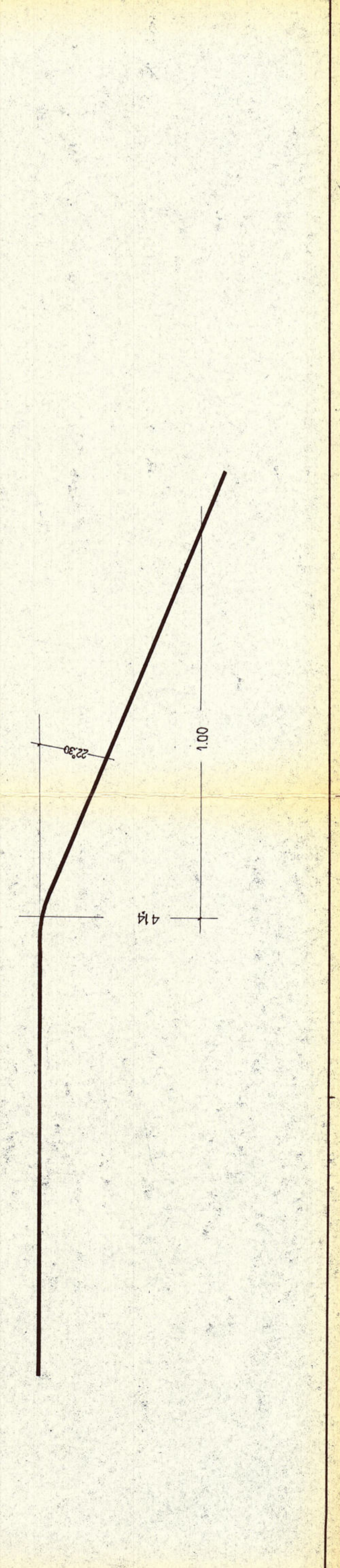
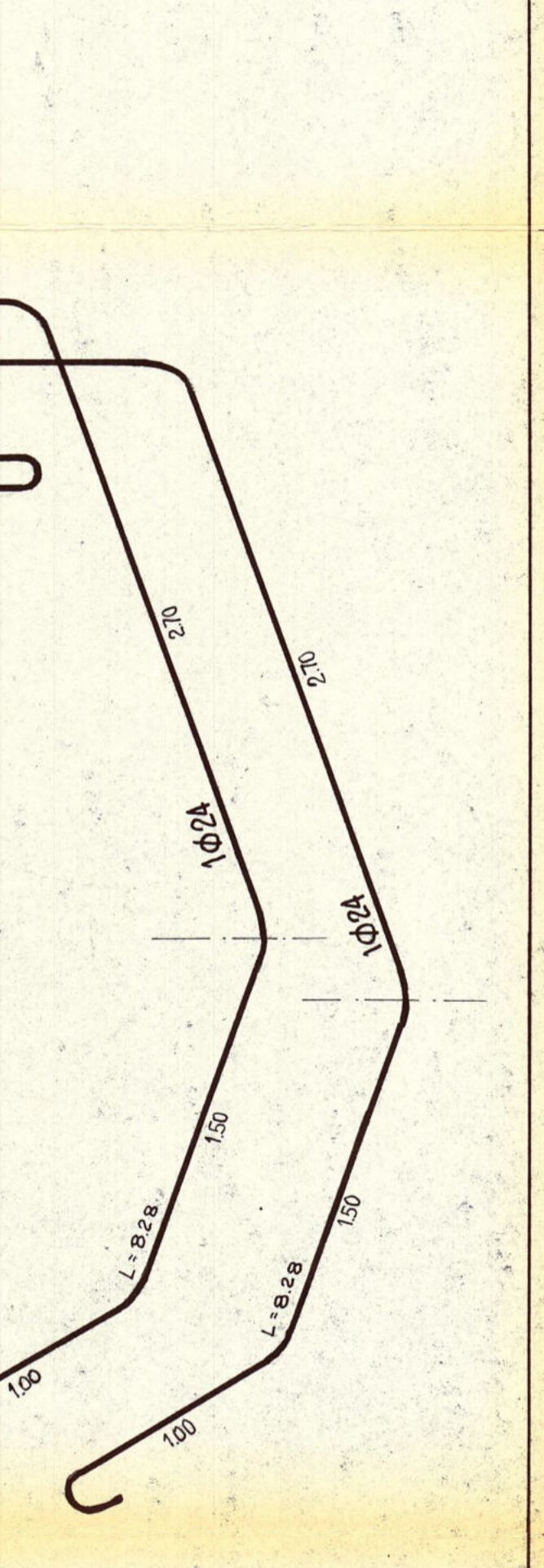
SULL'ASSE DEL PILASTRO I FERRI
 Ø24 DEBONO ESSERE PIEGATI
 NEL PIANO ORIZZONTALE DI
 UN ANGOLO DI 22°30' PARI A
 41,4 CHI. SU 1 METRO.

ARMATURA METALLICA A Q50
 ACCIAIO SEMIDURO
 CALCESTRUZZO 3 ql 730

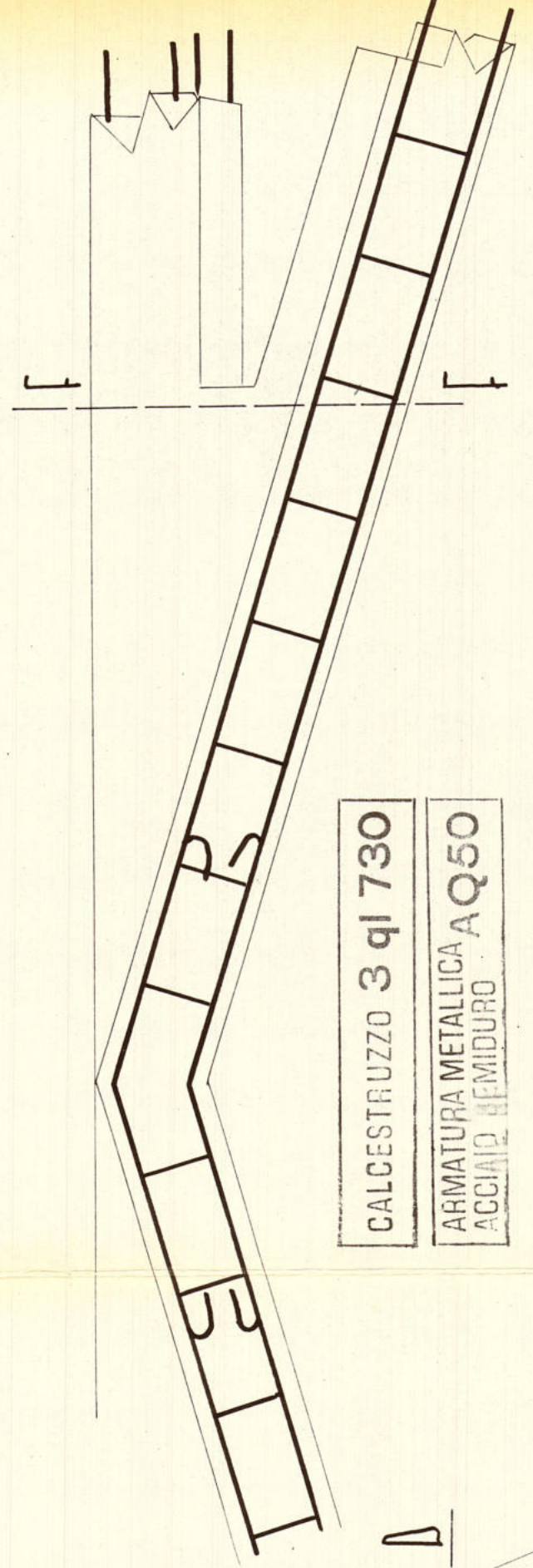
PARETI VERTICALI



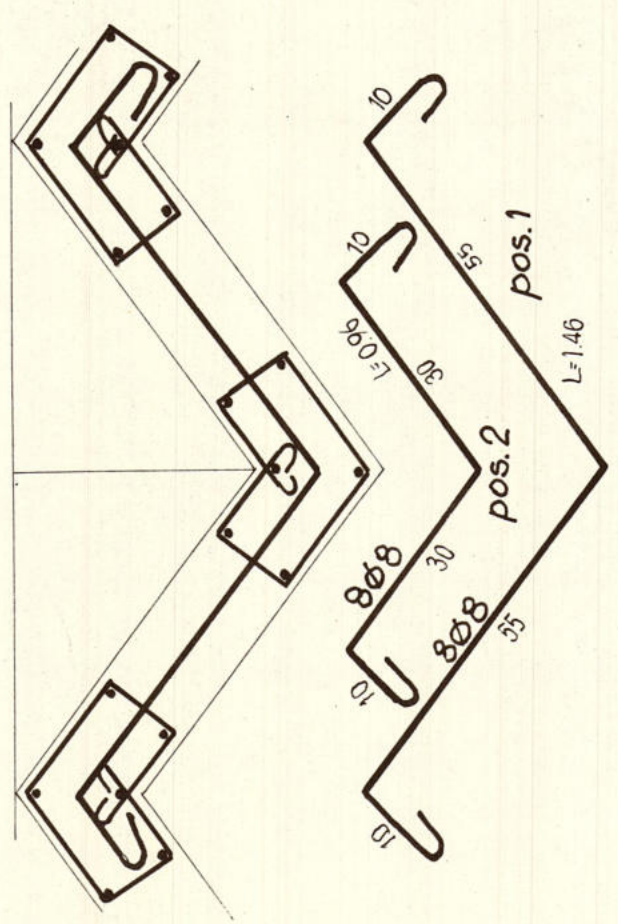
SEZIONE D-D



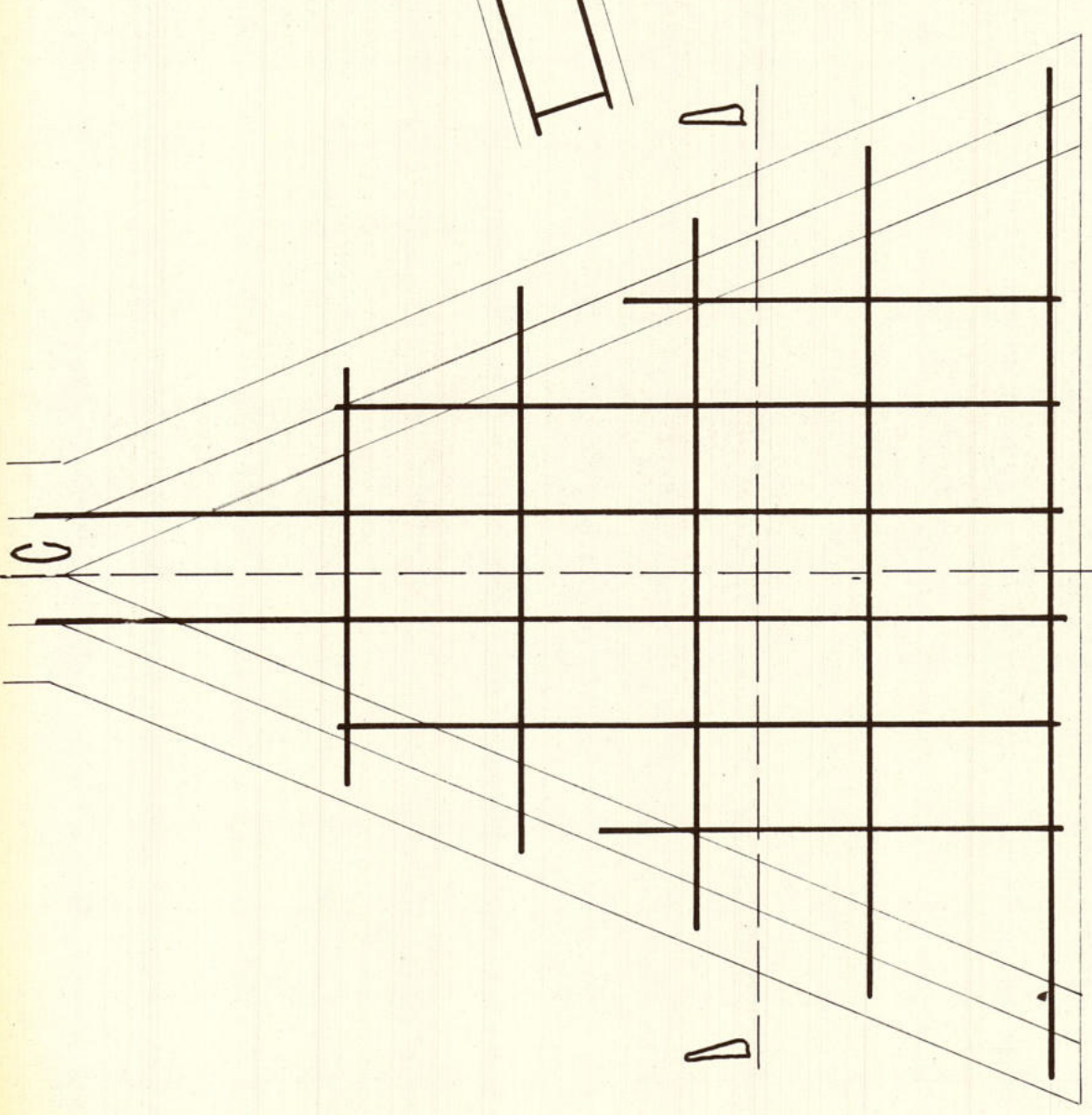
SEZIONE E-E



SEZIONE F-F

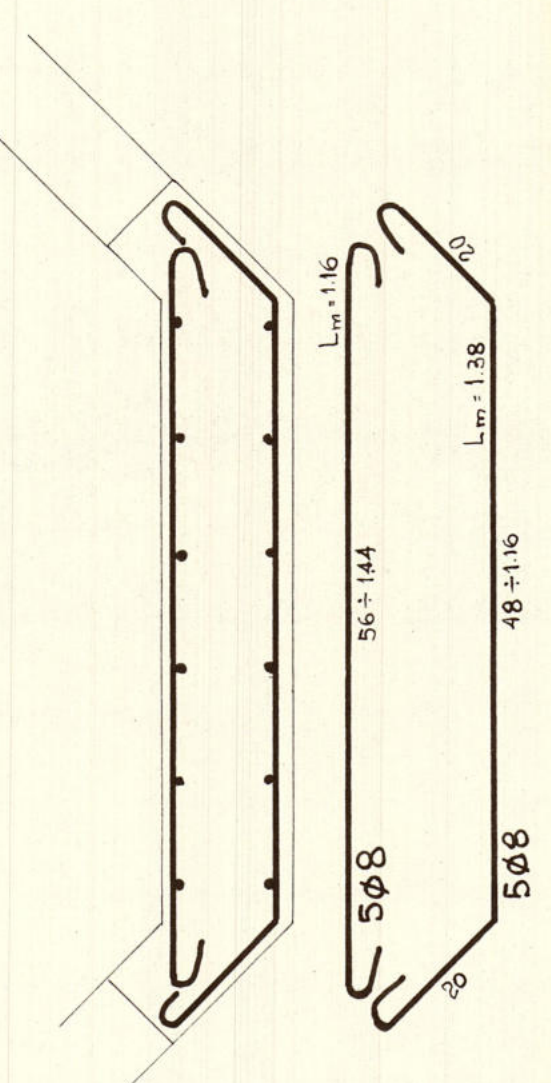


STUDIO TECNICO DOTT. ING. GIORGIO GALEOTTI	PROVINCIA DI REGGIO EMILIA COMUNE DI SILARIO D'ENZA	6
PROGETTO DI SERBATOIO PENSILE PER L'ACQUEDOTTO COMUNALE - COPERTURA - 1:25 1:10 27 LUG. 1964		



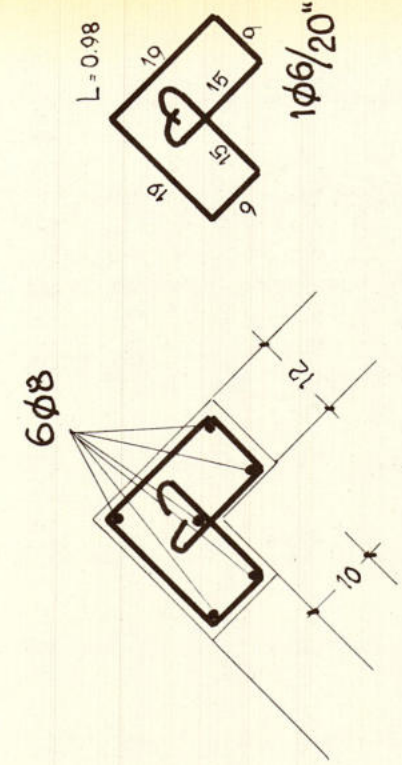
SEZIONE D-D

SCALA 1:10



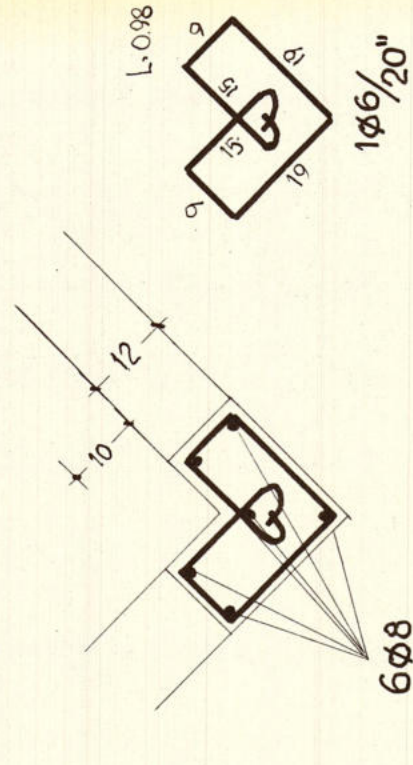
SEZIONE A-A

SCALA 1:10



SEZIONE B-B

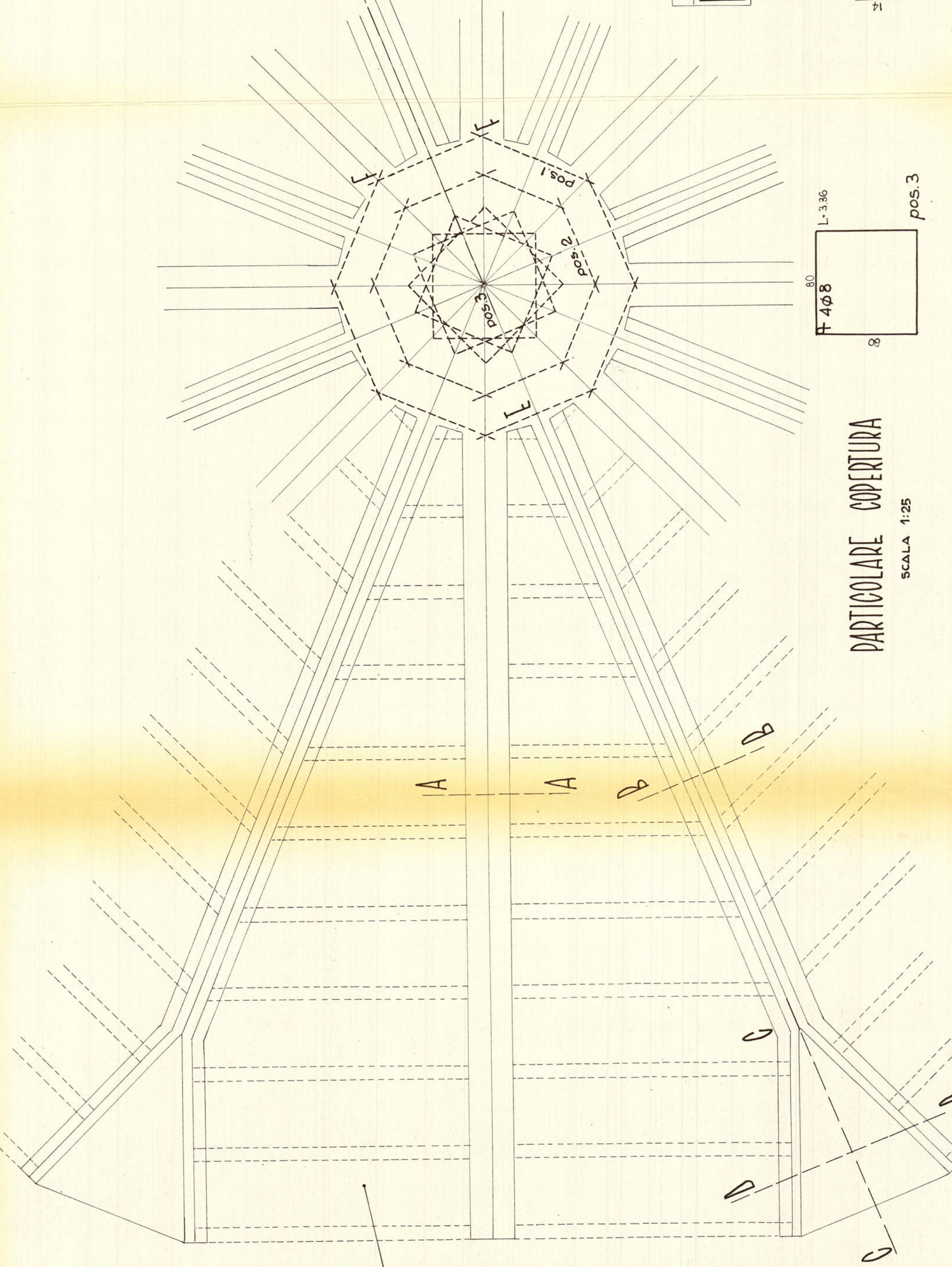
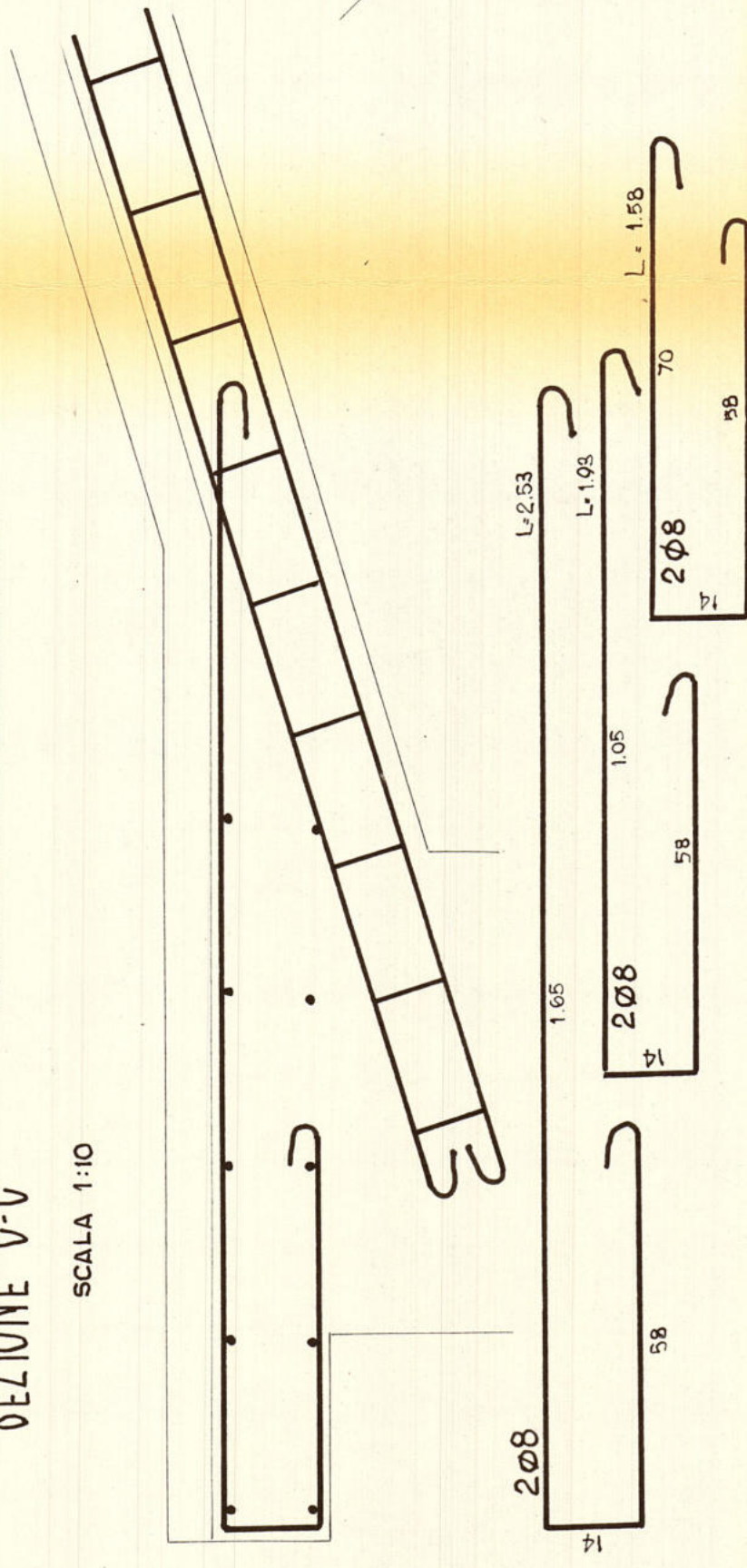
SCALA 1:10



CALCESTRUZZO 3 ql 730
ARMATURA METALLICA AQ50
ACCIAIO SEMIDURO

SEZIONE C-C

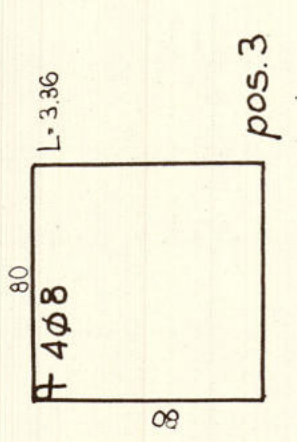
SCALA 1:10



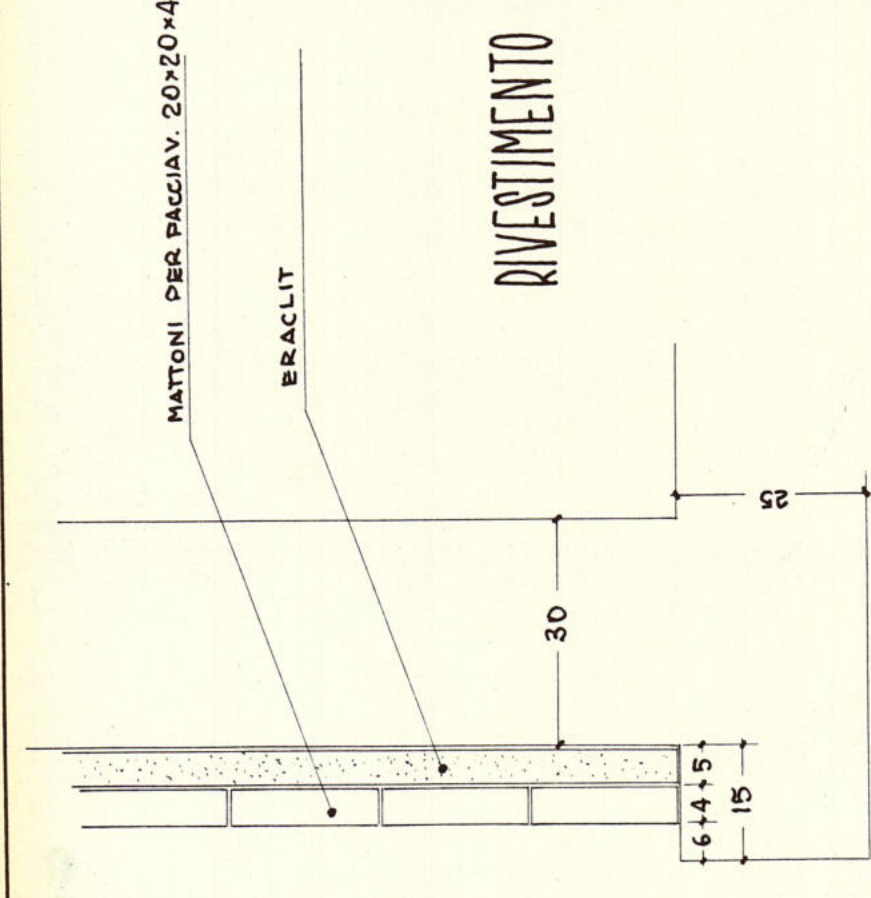
SOLAIO H 12
STRUTTURA MISTA
LATERIZIO E C.A.

PARTICOLARE COPERTURA

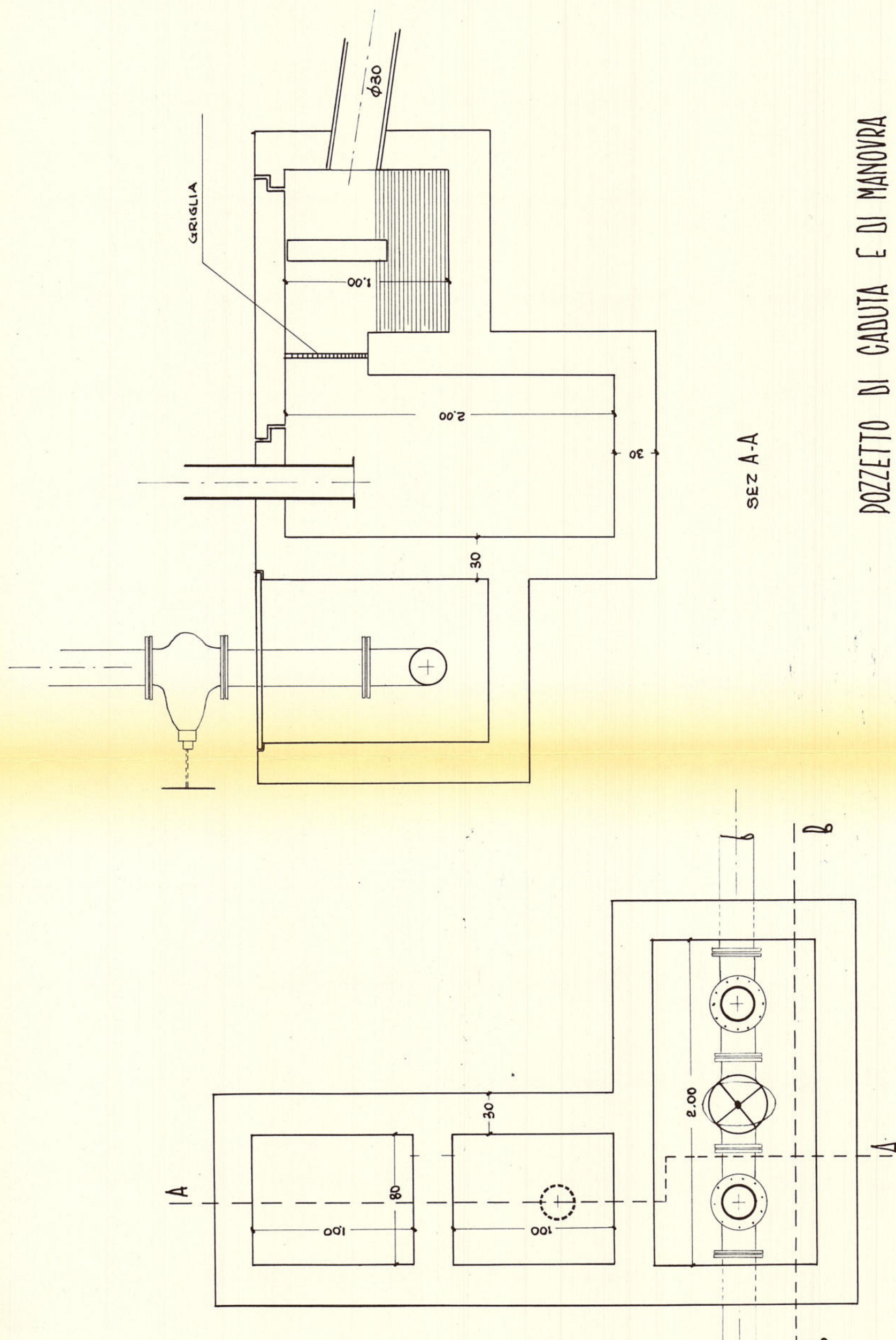
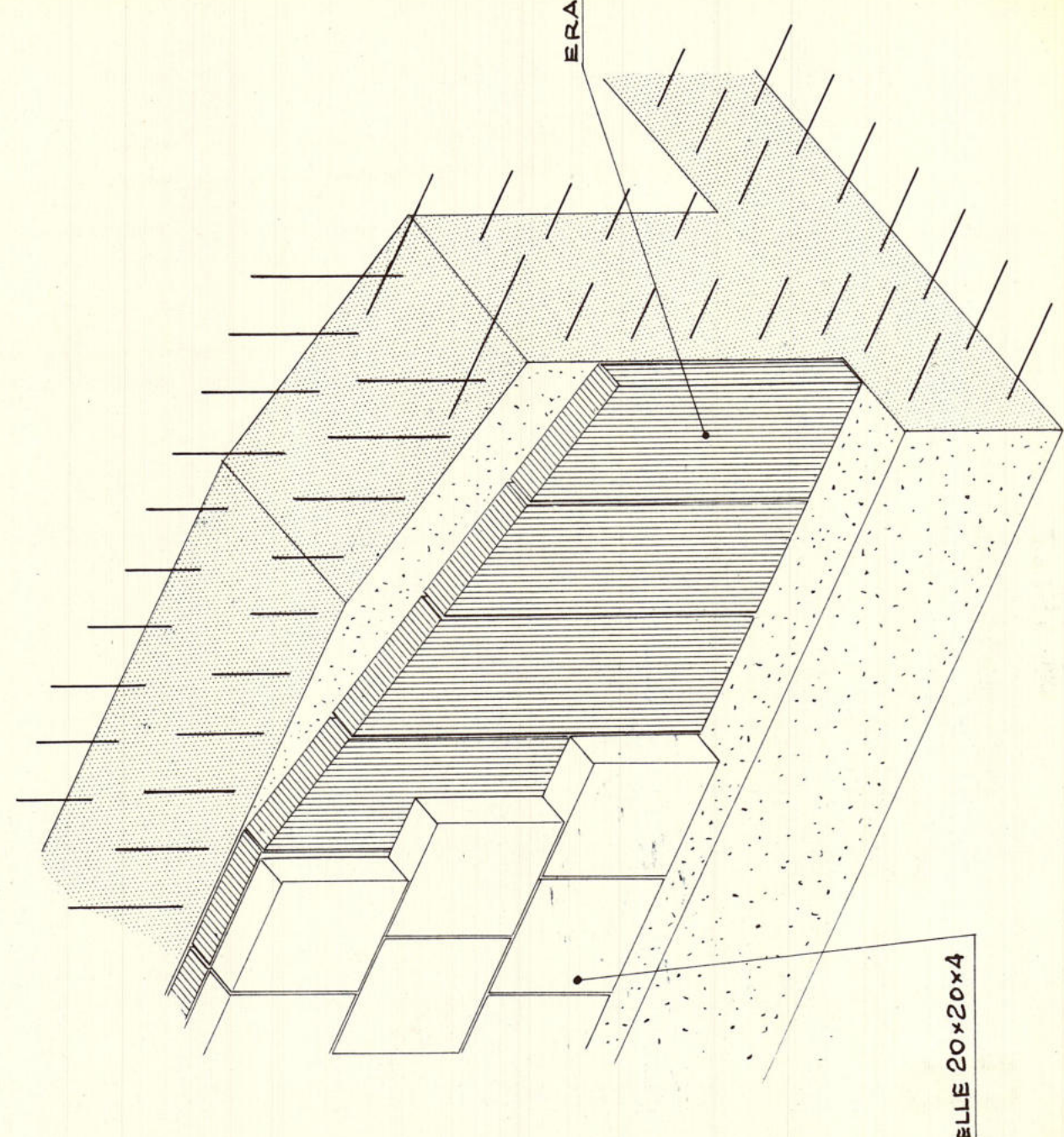
SCALA 1:25



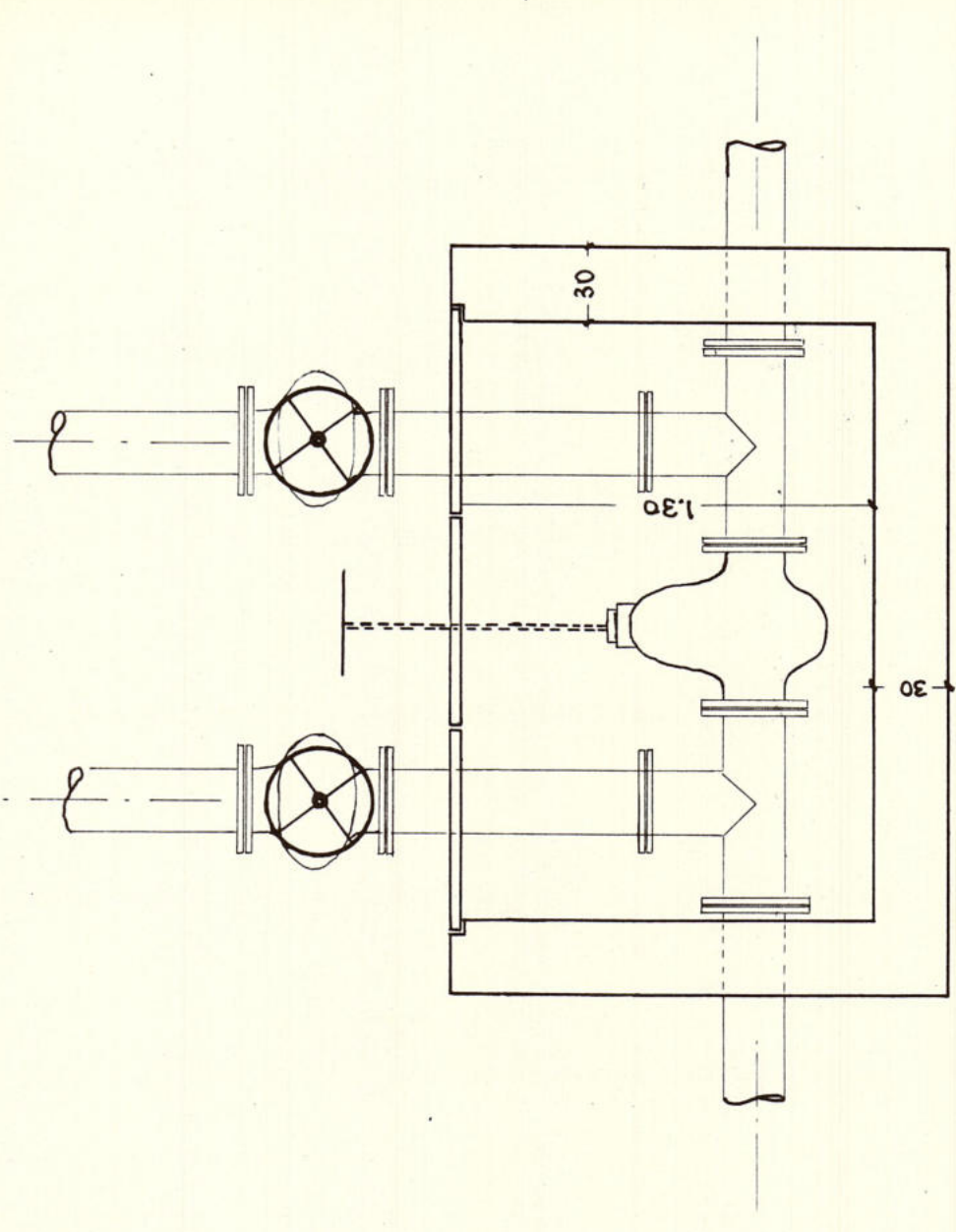
pos.3



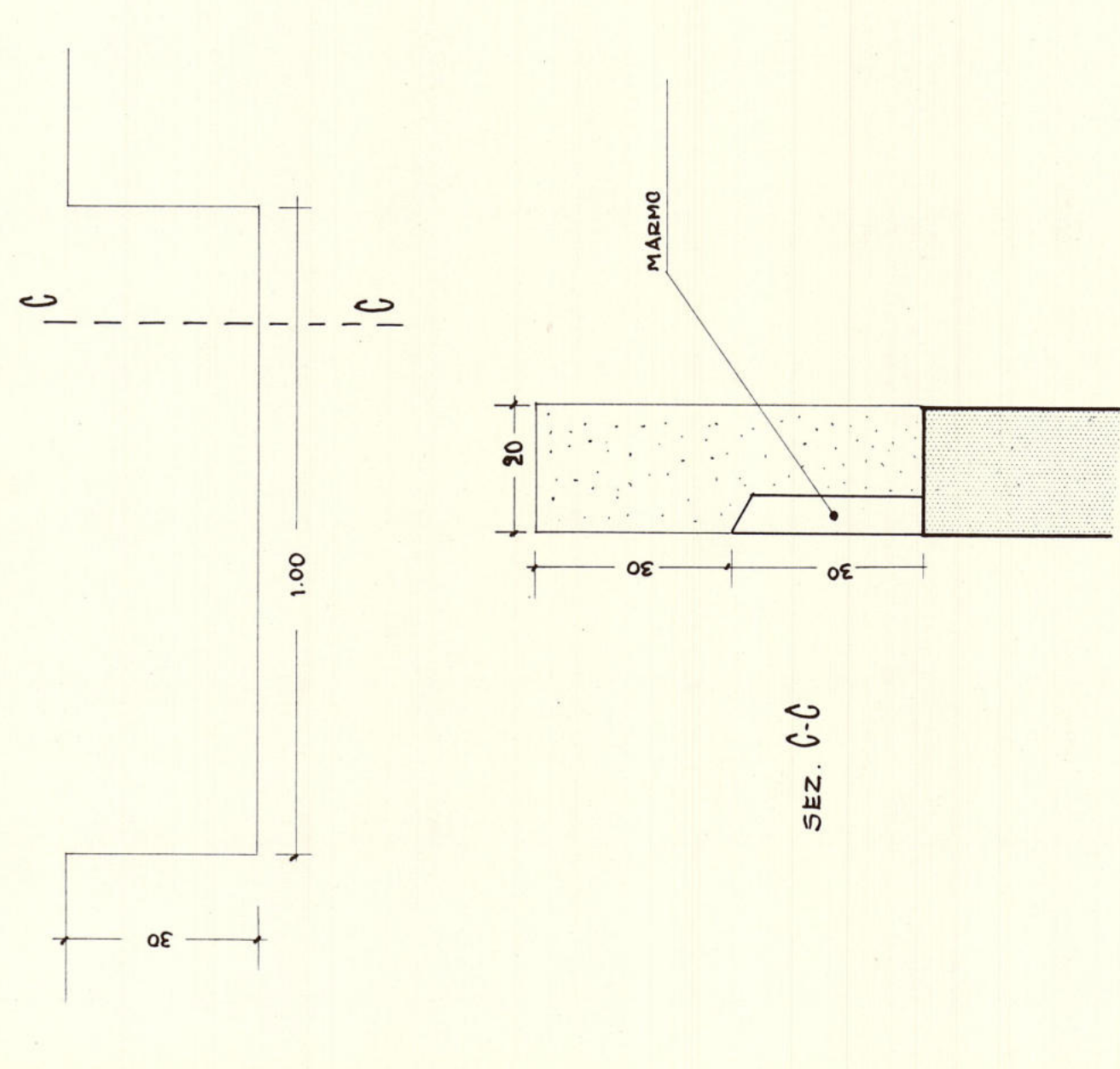
RIVESTIMENTO PARETI ESTERNE



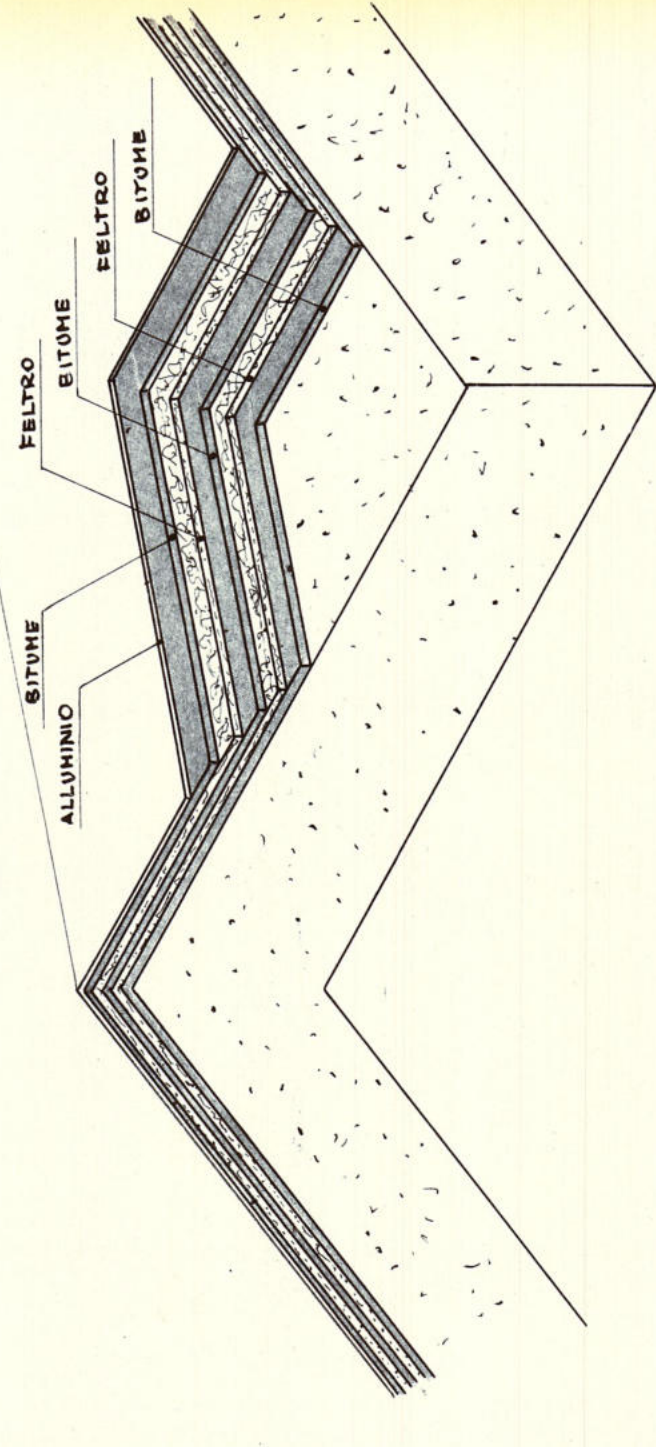
DOZZETTO DI CADUTA E DI MANOVRA



SEZ. B-B



SFIORATORE SERBATOIO



MANTO DI COPERTURA

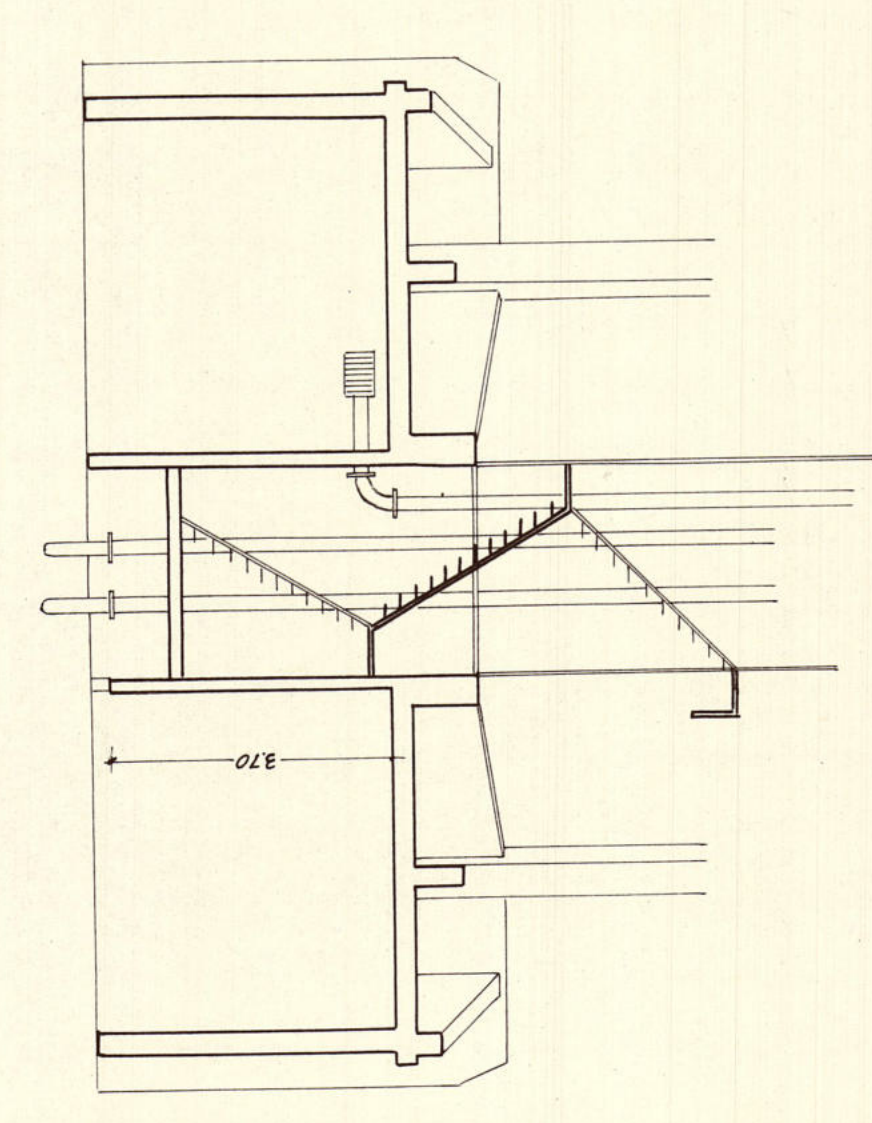
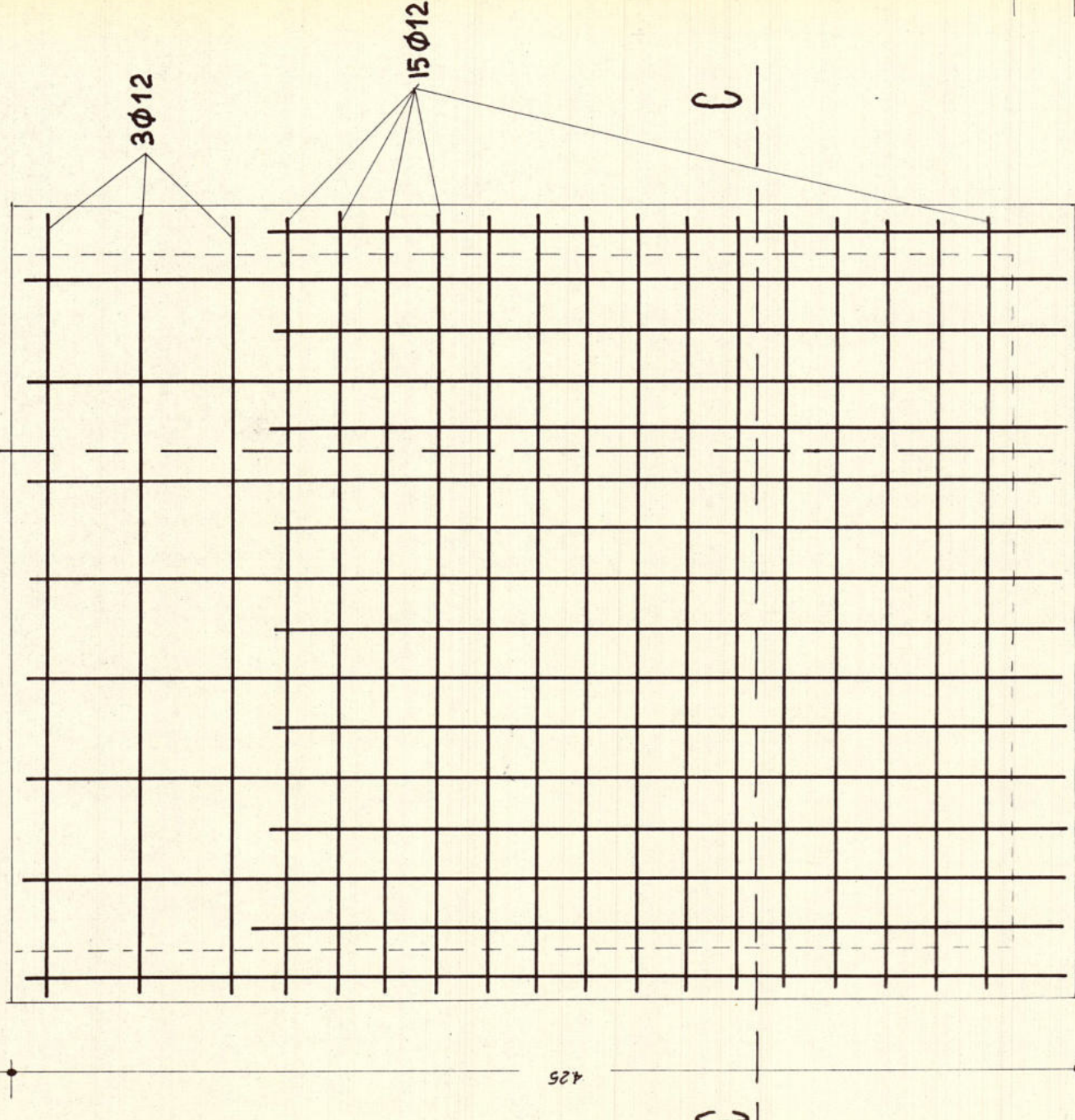
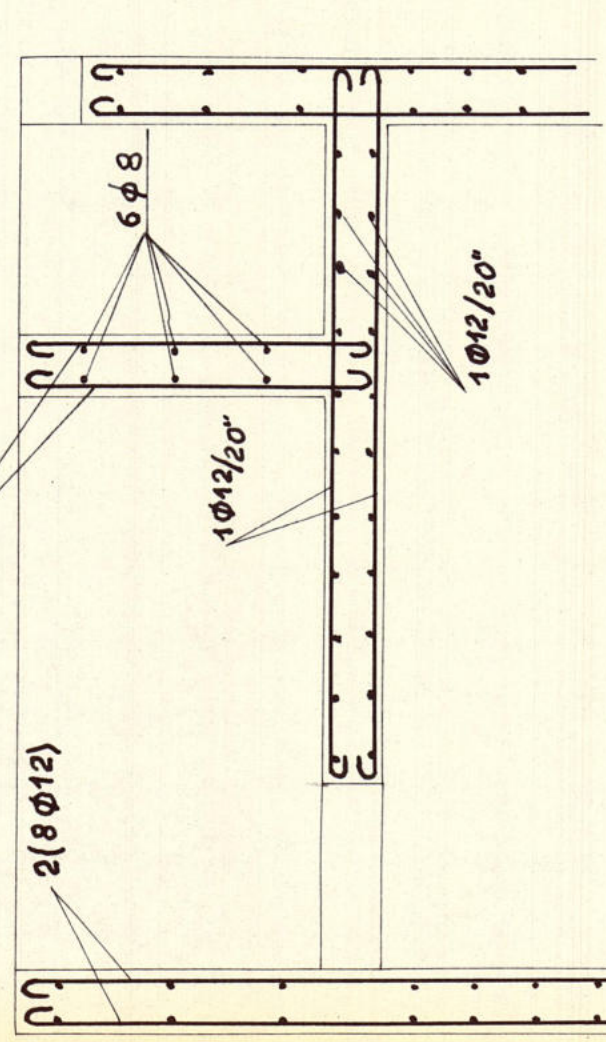
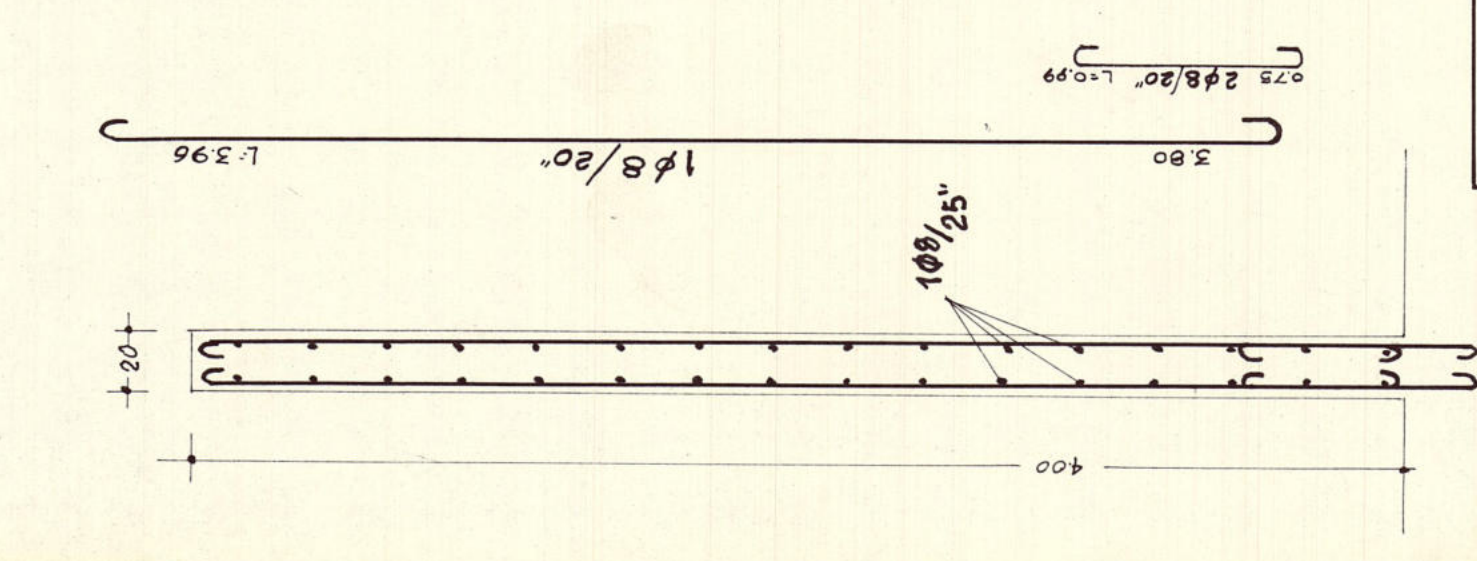
STUDIO TECNICO DOTT. ING. GIORGIO GALFOTTI	PROVINCIA DI REGGIO EMILIA COMUNE DI SILARIO PIENZA	7
PROGETTO DI SERBATOIO PENSILE PER L'ACQUEDOTTO COMUNALE - PARTICOLARI COSTRUTTIVI		
1:25	27 LUG. 1964	<i>Galotti</i>

PARETI DIVISORIE INTERNE

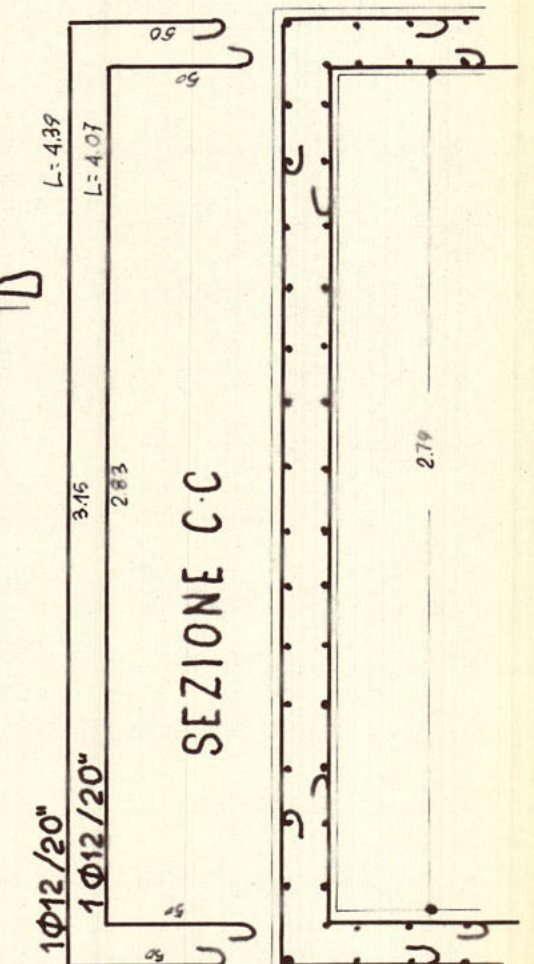
PARETI VANO CENTRALE

SEZIONE A-A

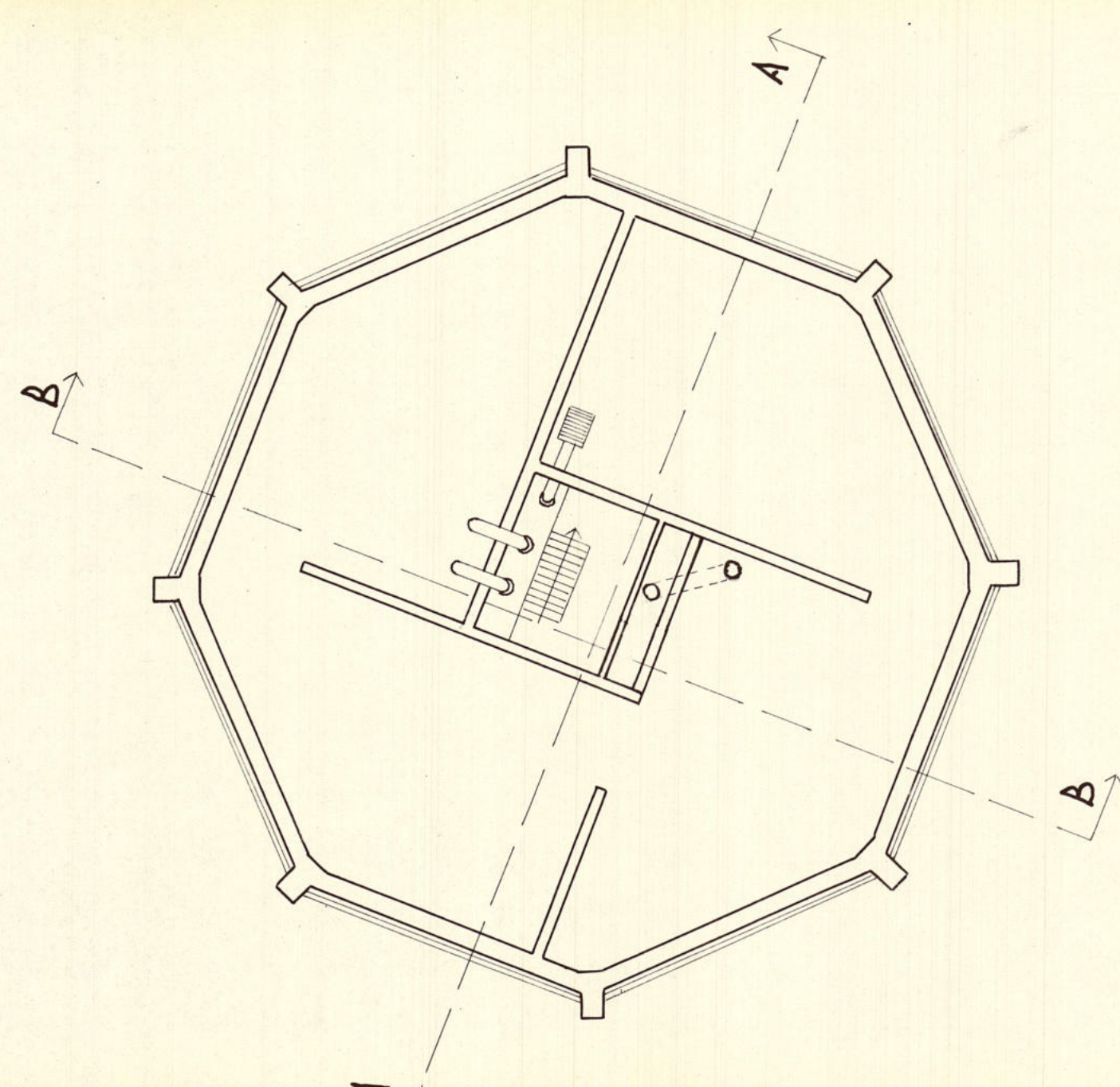
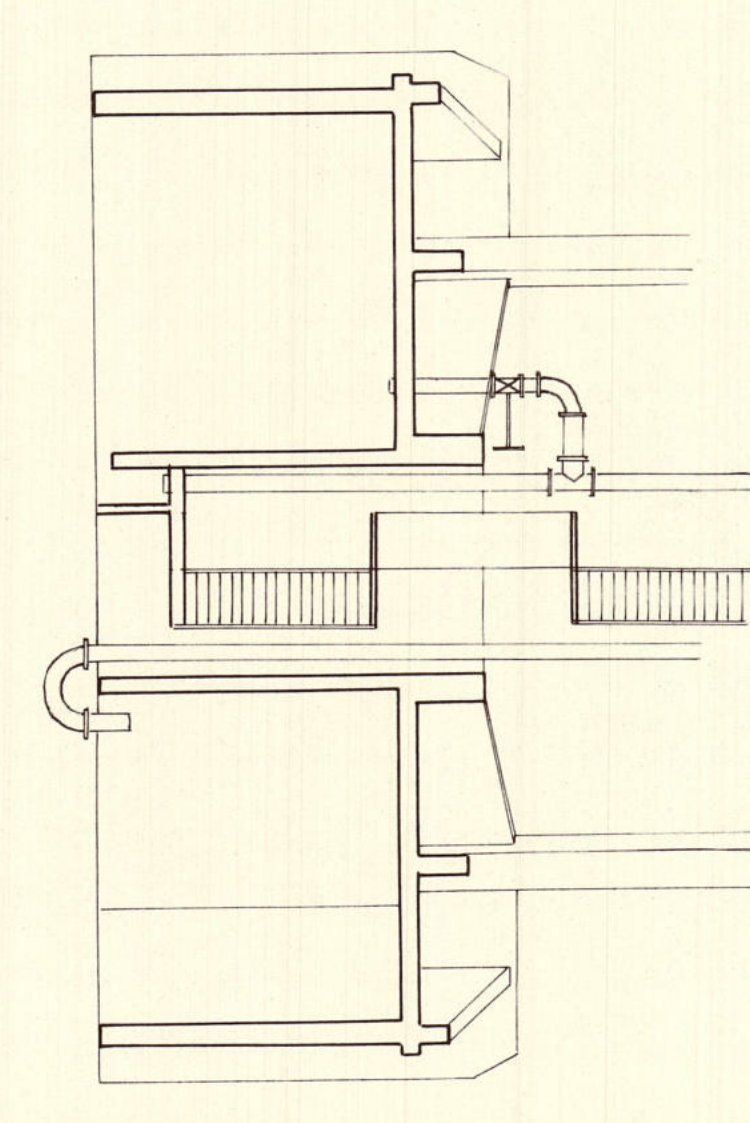
PIANTA



SEZIONE D-D



SEZIONE B-B



CALCESTRUZZO 3 q1 730

ARMATURA METALLICA A Q50
ACCORDO SEMIDURE A Q50

PROVINCIA DI REGGIO EMILIA	8
COMUNE DI SILARIO S. ENZA	
PROGETTO DI SERBATOIO PENSILE PER L'ACQUEDOTTO COMUNALE	SOSTITUISCE LA TAV. 5
PARTICOLARI SERBATOIO	
4:100 1:25 27 LUG. 1964	